

Aerial Insect and Disease Detection Survey 2014

Significant Pest/Disease Activity

-  Alder Defoliation/Dieback
177,000 Acres
-  Aspen Defoliation
139,000 Acres
-  Spruce Bark/Engraver Beetle
22,100 Acres
-  Birch Defol/Lf Roller/Aphids/Abiotic Thinning
583,000 Acres
-  Cottonwood Defoliation
53,400 Acres
-  Willow Defoliation/Dieback/Miners
149,500 Acres
-  Spruce Defoliation
58,900 Acres
-  Cedar Decline
19,900 Acres


Land Cover


-  Conifer Forest
-  Mixed/Broadleaf Forest
-  Shrub
-  Non-Forest
-  Water


Note: Many of the most destructive diseases are not represented on the map due to these agents not being detectable from aerial surveys.

Activity polygon area may be larger than actual area because activity polygons are enhanced with a large border to aid visualization.

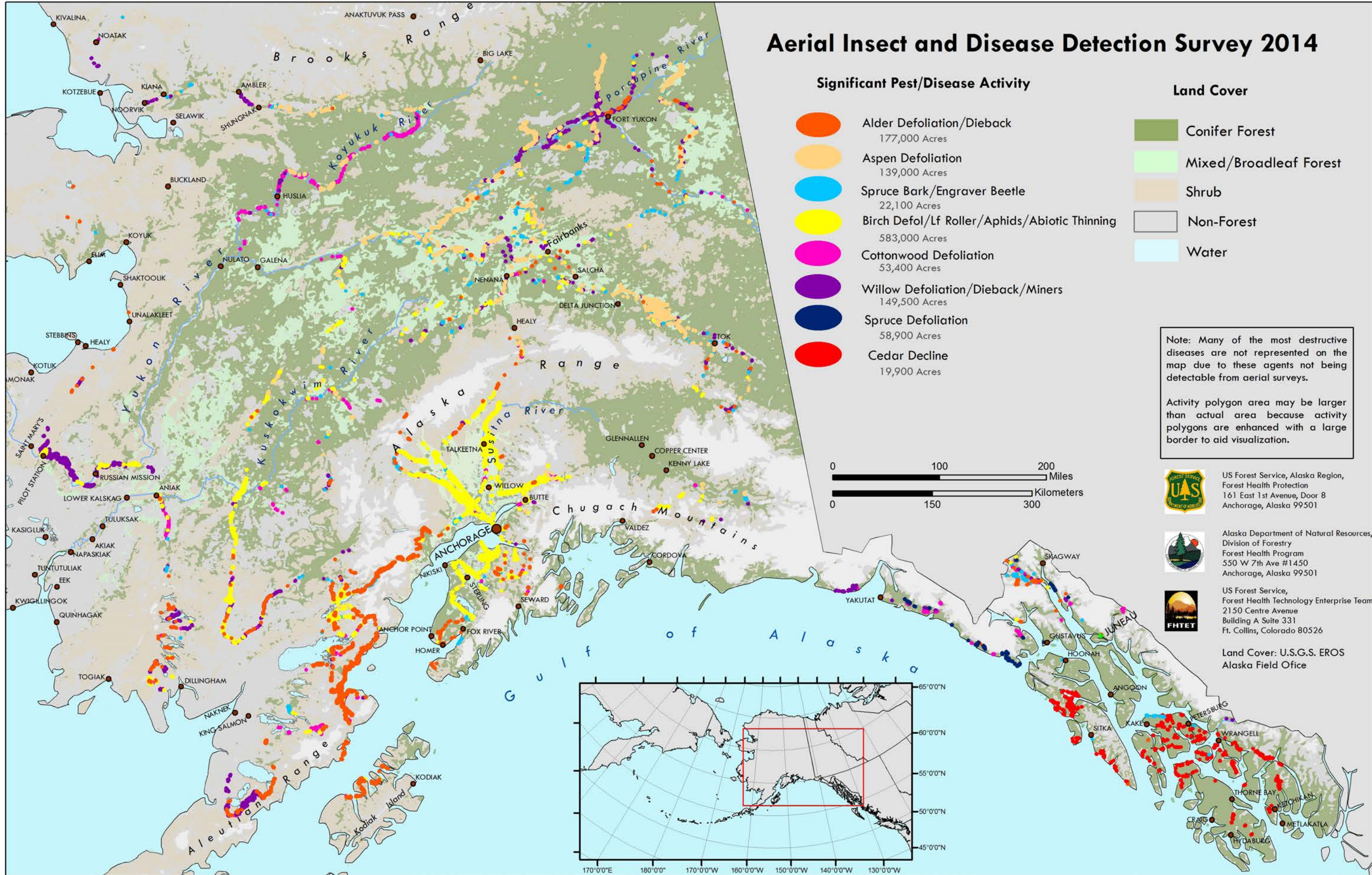


 US Forest Service, Alaska Region,
Forest Health Protection
161 East 1st Avenue, Door 8
Anchorage, Alaska 99501

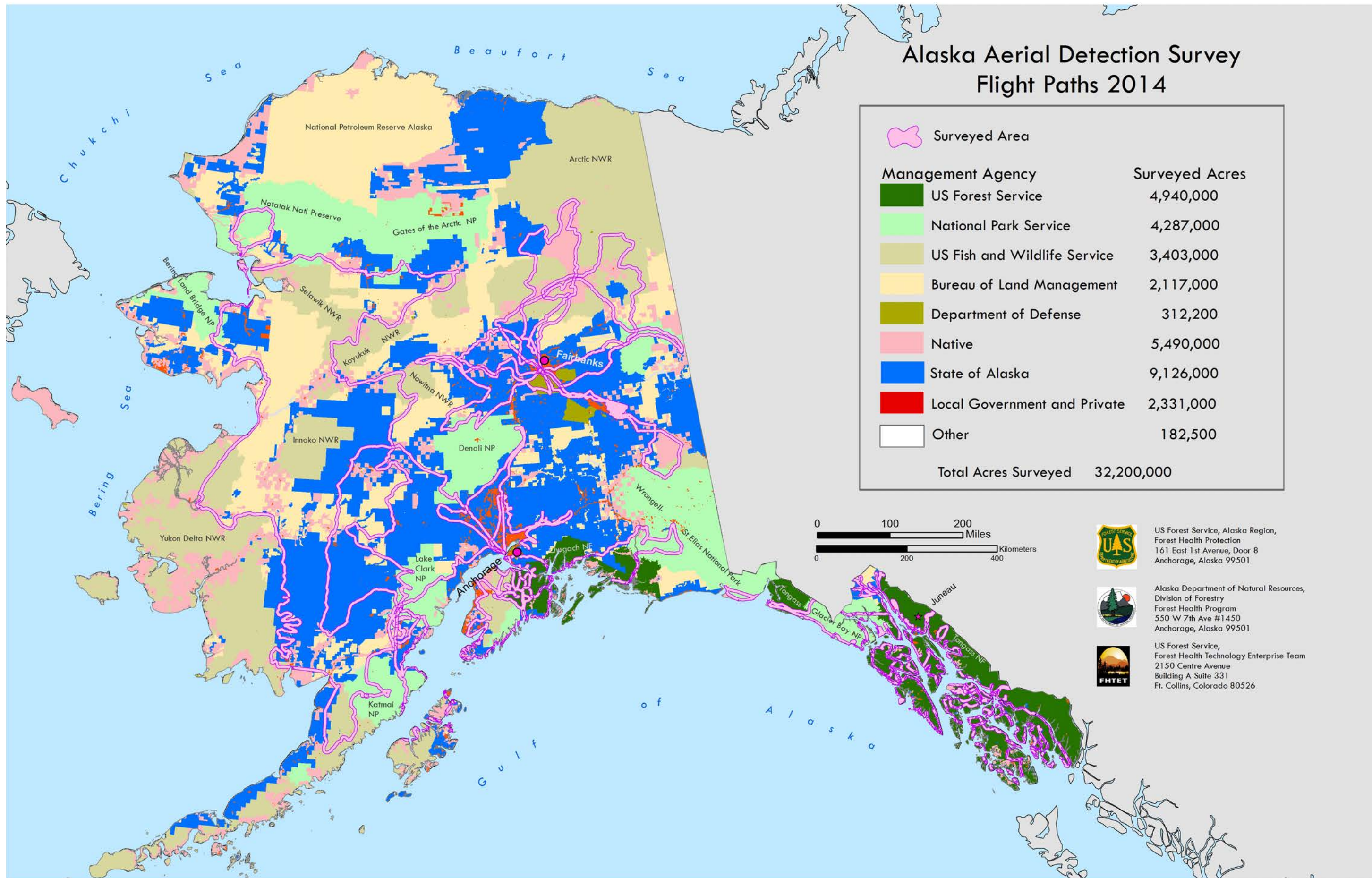
 Alaska Department of Natural Resources,
Division of Forestry
Forest Health Program
550 W 7th Ave #1450
Anchorage, Alaska 99501

 US Forest Service,
Forest Health Technology Enterprise Team
2150 Centre Avenue
Building A Suite 331
Ft. Collins, Colorado 80526

Land Cover: U.S.G.S. EROS
Alaska Field Office



Map 1. Aerial insect and disease detection survey 2014.



Map 2. Alaska aerial detection survey flight paths 2014.