



Using our Online Data Gallery

Internet browser choice will affect the performance of our [online data gallery](#). We recommend using Google Chrome or Mozilla Firefox when accessing our data.

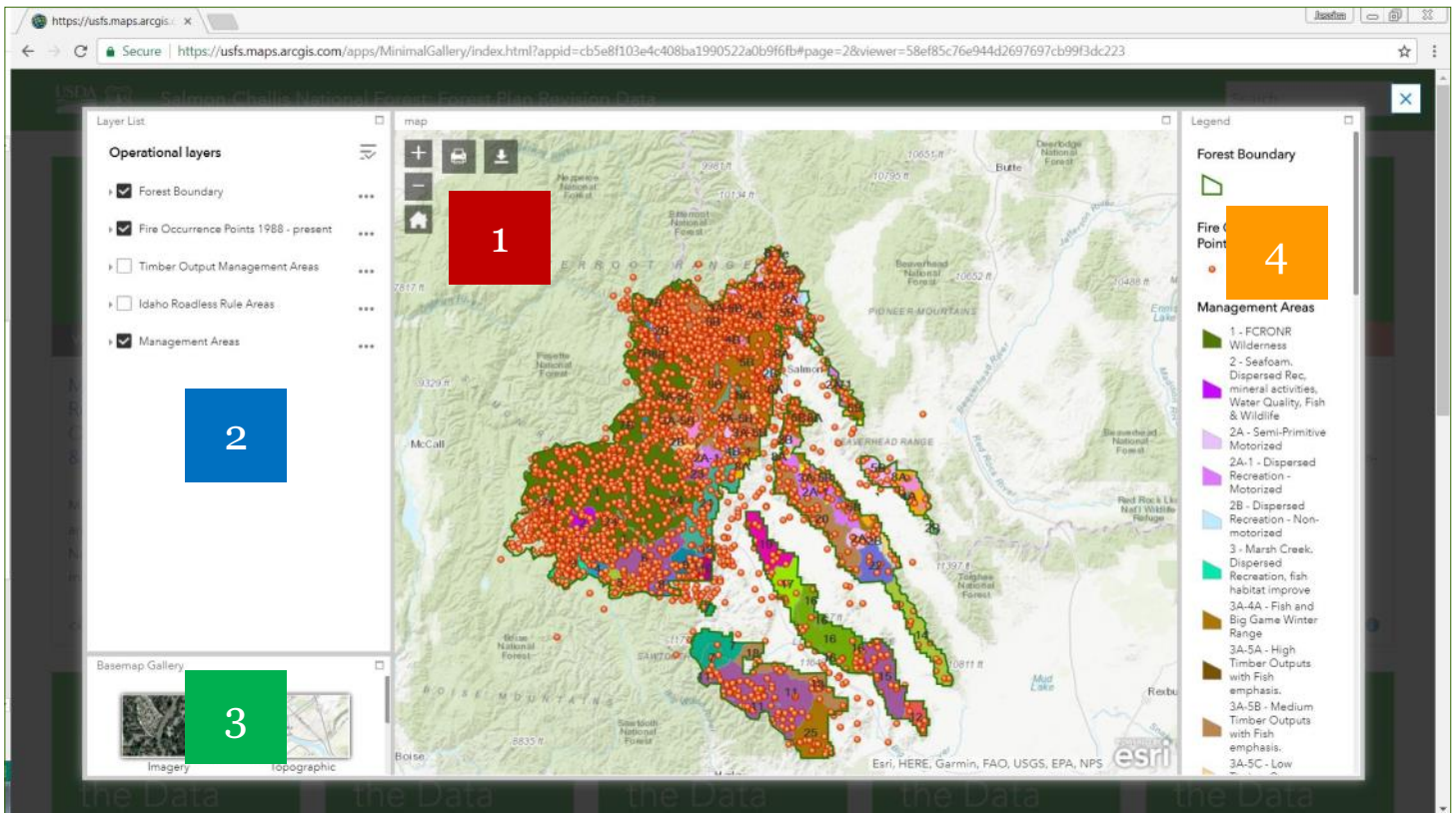
There are several different types of files available in our online data gallery:

<p>Download the Data</p> <p>File Geodatabase</p>	<p>Download the Data</p> <p>Tile Layer</p>	<p>Explore the Data</p> <p>Web Map</p>	<p>Explore the Data</p> <p>Web Mapping Application</p>
<p>File Geodatabases cover point, line and polygon data. These files are intended for those with access to advanced geographic systems software.</p>	<p>Tile Layers provide raster, or image, data. These files are intended for those with access to advanced geographic systems software.</p>	<p>Web Maps are interactive displays of geographic information. These files can be viewed by anyone with access to a web browser. Web maps allow users to zoom in and out on map data.</p>	<p>Web Mapping Applications, or StoryMaps, are interactive tools for sharing multiple Web Maps. These files can be viewed and manipulated by anyone with access to a web browser.</p>

Widgets titled “Download the Data” are intended for those with access to specialized software. Widgets titled “Explore the Data” allow users to see what data is available in similarly titled “Download the Data” widgets.



Navigating Web Mapping Applications



1 Navigating the Map



You can zoom in and out from the preset appearance by clicking on the plus or minus signs. You may also be able to zoom in and out with your mouse, depending on your computer's settings.



The Print button, found between the zoom and download tools, allows you to specify extents and print all or part of the data in the web map application.



The Download button allows you to download the data layers that make up the web map application. Special software is required to access the information in the files.

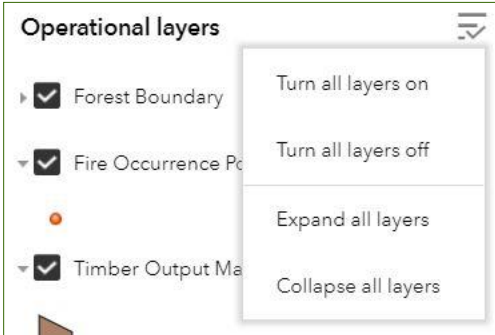


You can return to the map's original view at any time by clicking the Home button.

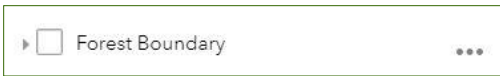
2 Adjusting the Layer List

The Layers List, to the top left of the map, is where you can truly control the data you see.

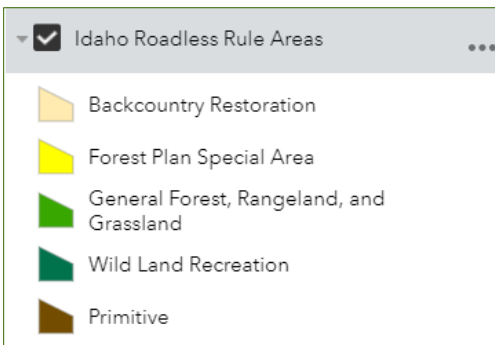
The menu at the top right of the Layer List box allows you to quickly turn all layers on and off and expand or collapse all layers.



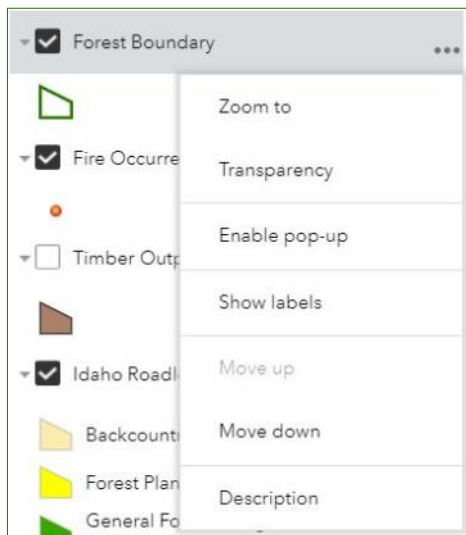
Arrow point to the right means the layer is collapsed. No check mark in the box means the layer is turned off.



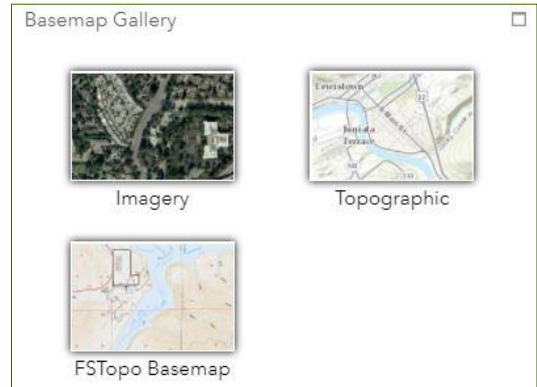
Arrow point downward shows the layer expanded. Check mark in the box indicates the layer data is active on the map



By clicking on each layer's ellipsis (...), you can zoom to a particular layer, view multiple layers at once by applying

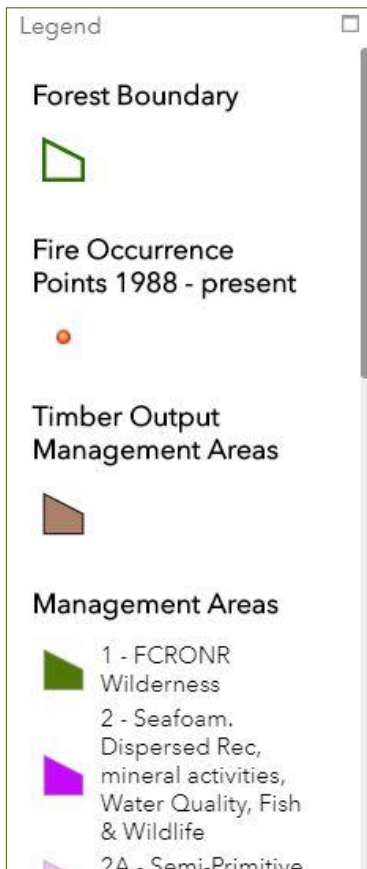


3 Selecting a Basemap



The Basemap Gallery, to the bottom left of the map, allows you to control what kind of map underlies the data in the app. Imagery features satellite images. Topographic shows contour detail of topography. FSTopo shows contour detail, national forest boundaries, and roads.

4 Reading the Legend



The Legend, to the right of the map, shows what each color or pattern on the map represents. The bar on the right of the Legend window allows you to scroll to see the colors and patterns that don't otherwise fit into the window when you are viewing the web map application.