

Snowmobile Trail Map

JUNCTION

Coeur d'Alene River Ranger District Idaho Panhandle National Forests

Legend

Snow Trail Sites

- Outhouses
- Warming Hut
- Services* - Check before your trip to be sure services are available
- Ranger Station
- Trailhead Parking
- Junction Numbers* - Not always marked on the ground
- Helispots and Numbers - Corresponds to Table Not marked on the ground

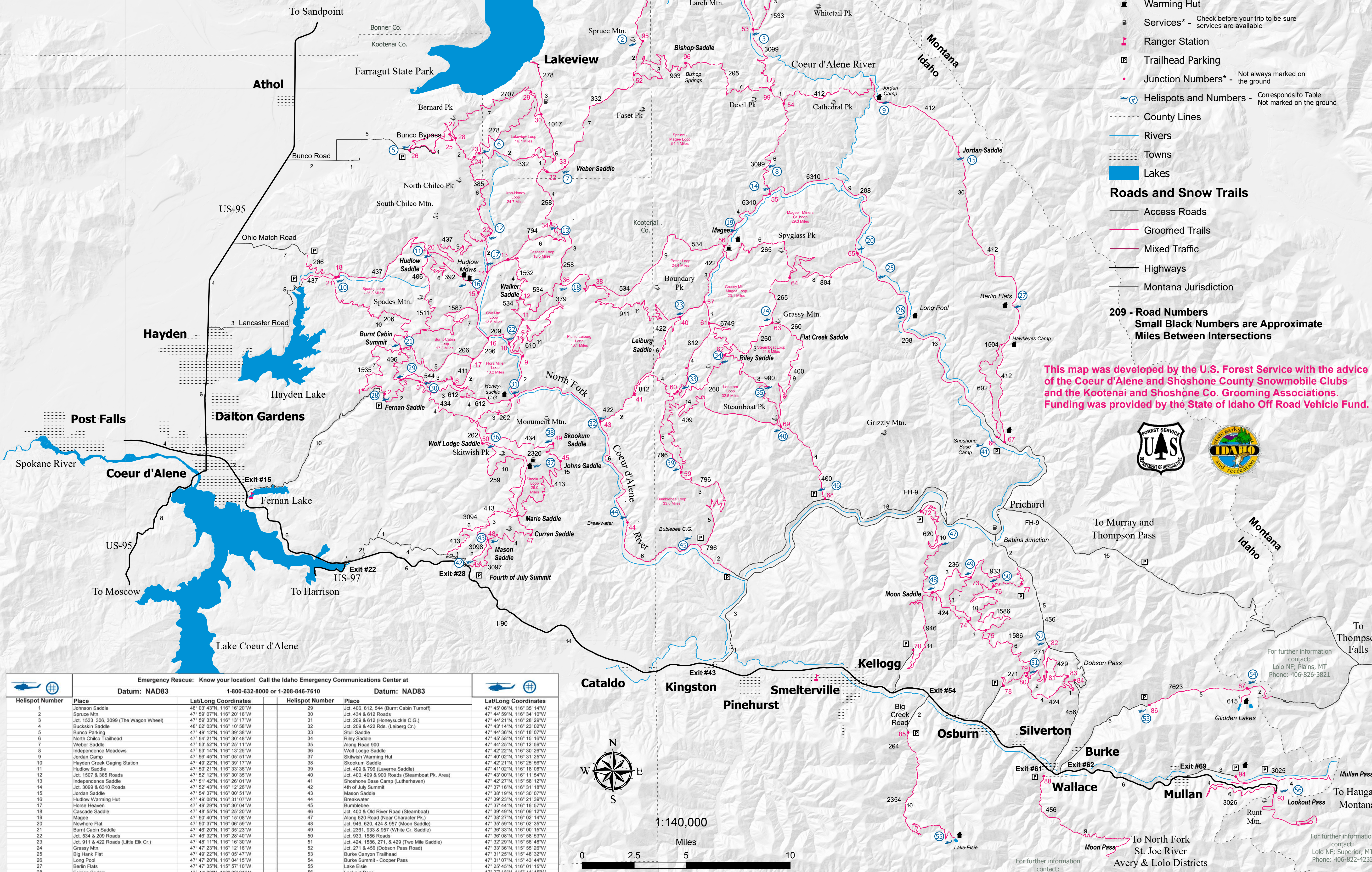
- County Lines
- Rivers
- Towns
- Lakes

Roads and Snow Trails

- Access Roads
- Groomed Trails
- Mixed Traffic
- Highways
- Montana Jurisdiction

209 - Road Numbers
Small Black Numbers are Approximate Miles Between Intersections

This map was developed by the U.S. Forest Service with the advice of the Coeur d'Alene and Shoshone County Snowmobile Clubs and the Kootenai and Shoshone Co. Grooming Associations. Funding was provided by the State of Idaho Off Road Vehicle Fund.



Emergency Rescue: Know your location! Call the Idaho Emergency Communications Center at					
Datum: NAD83		1-800-632-8000 or 1-208-846-7610		Datum: NAD83	
Helispot Number	Place	Lat/Long Coordinates	Helispot Number	Place	Lat/Long Coordinates
1	Johnson Saddle	48° 03' 43"N, 116° 16' 20"W	29	Jct. 406, 612, 544 (Burnt Cabin Turnoff)	47° 45' 07"N, 116° 35' 14"W
2	Spruce Mtn.	47° 59' 07"N, 116° 20' 18"W	30	Jct. 434 & 612 Roads	47° 44' 59"N, 116° 34' 10"W
3	Jct. 1533, 306, 3099 (The Wagon Wheel)	47° 59' 33"N, 116° 13' 17"W	31	Jct. 209 & 612 (Honey-suckle C.G.)	47° 44' 21"N, 116° 28' 29"W
4	Buckskin Saddle	48° 02' 03"N, 116° 10' 28"W	32	Jct. 209 & 422 Rds. (Leiberg Cr.)	47° 43' 14"N, 116° 20' 02"W
5	Bunco Parking	47° 49' 13"N, 116° 39' 38"W	33	Stull Saddle	47° 44' 36"N, 116° 18' 07"W
6	North Chilco Trailhead	47° 54' 21"N, 116° 30' 48"W	34	Riley Saddle	47° 45' 58"N, 116° 15' 16"W
7	Weber Saddle	47° 53' 52"N, 116° 25' 11"W	35	Along Road 900	47° 44' 25"N, 116° 12' 59"W
8	Independence Meadows	47° 53' 14"N, 116° 13' 29"W	36	Wolf Lodge Saddle	47° 42' 02"N, 116° 30' 29"W
9	Jordan Camp	47° 56' 45"N, 116° 05' 51"W	37	Skitish Warming Hut	47° 40' 02"N, 116° 31' 25"W
10	Hayden Creek Gaging Station	47° 49' 22"N, 116° 39' 11"W	38	Skookum Saddle	47° 42' 21"N, 116° 25' 56"W
11	Hudlow Saddle	47° 50' 21"N, 116° 33' 36"W	39	Jct. 409 & 796 (Lavigne Saddle)	47° 41' 02"N, 116° 18' 08"W
12	Jct. 1507 & 385 Roads	47° 52' 12"N, 116° 30' 35"W	40	Jct. 400, 409 & 900 Roads (Steamboat Pk. Area)	47° 43' 00"N, 116° 11' 54"W
13	Independence Saddle	47° 51' 42"N, 116° 26' 01"W	41	Shoshone Base Camp (Lutherhaven)	47° 42' 27"N, 116° 56' 12"W
14	Jct. 3099 & 6310 Roads	47° 52' 43"N, 116° 12' 28"W	42	4th of July Summit	47° 37' 07"N, 116° 31' 18"W
15	Jordan Saddle	47° 54' 37"N, 116° 05' 51"W	43	Mason Saddle	47° 38' 19"N, 116° 30' 07"W
16	Hudlow Warming Hut	47° 49' 08"N, 116° 31' 07"W	44	Breakwater	47° 39' 23"N, 116° 21' 39"W
17	Horse Heaven	47° 49' 29"N, 116° 30' 04"W	45	Bumblebee	47° 37' 44"N, 116° 16' 57"W
18	Cascade Saddle	47° 48' 55"N, 116° 33' 36"W	46	Jct. 400 & Old River Road (Steamboat)	47° 36' 07"N, 116° 00' 12"W
19	Magee	47° 50' 40"N, 116° 15' 08"W	47	Along 620 Road (Near Character Pk.)	47° 38' 27"N, 116° 02' 14"W
20	Nowhere Flat	47° 50' 37"N, 116° 06' 59"W	48	Jct. 946, 620, 424 & 957 (Moon Saddle)	47° 35' 59"N, 116° 02' 35"W
21	Burnt Cabin Saddle	47° 46' 20"N, 116° 35' 22"W	49	Jct. 281, 933 & 957 (White Cr. Saddle)	47° 36' 37"N, 116° 00' 15"W
22	Jct. 534 & 209 Roads	47° 46' 32"N, 116° 28' 40"W	50	Jct. 933, 1586 Roads	47° 36' 08"N, 115° 56' 53"W
23	Jct. 911 & 422 Roads (Little Elk Cr.)	47° 48' 11"N, 116° 16' 30"W	51	Jct. 424, 1586, 271, & 429 (Two Mile Saddle)	47° 32' 29"N, 115° 56' 48"W
24	Grassy Mtn.	47° 47' 23"N, 116° 12' 17"W	52	Jct. 271 & 456 (Dobson Pass Road)	47° 33' 38"N, 115° 56' 20"W
25	Big Hawk Flat	47° 49' 22"N, 116° 02' 47"W	53	Burke Canyon Trailhead	47° 31' 28"N, 115° 45' 39"W
26	Long Pool	47° 47' 20"N, 116° 04' 15"W	54	Burke Summit - Cooper Pass	47° 31' 07"N, 115° 43' 44"W
27	Berlin Flats	47° 47' 35"N, 115° 57' 10"W	55	Lake Elsie	47° 25' 45"N, 116° 01' 15"W
28	Fernan Saddle	47° 44' 09"N, 116° 38' 21"W	56	Lookout Pass	47° 27' 18"N, 116° 41' 49"W



For further information contact:
Idaho Panhandle NF, Avery, ID
Phone: 208-245-6246

For further information contact:
Lolo NF, Superior, MT
Phone: 406-822-4233