

# CHUGACH NATIONAL FOREST

Glacier & Seward Ranger Districts

Order No. 10-04-00-18-02

## EMERGENCY ORDER for SPECIAL CLOSURE Glacier & Seward Districts Snowmobile Area Closures

Pursuant to Title 36 Code of Federal Regulations 261.50 (a) and (b), the following restrictions are in effect on the Glacier and Seward Ranger Districts of the Chugach National Forest. These restrictions are in addition to those enumerated in Subpart A, Part 261, Title 36, Code of Federal Regulations, and become effective when signed and will remain in effect until rescinded.

### Prohibited Acts:

#### 36 CFR 261.53 – Special Closures

#### 36 CFR 261.53(f) – Property

Due to inadequate snow conditions and to prevent resource damage, operating or possessing a snowmobile on or within the Glacier and Seward Ranger Districts of the Chugach National Forest as described in attachment “A” are prohibited.

### Exceptions:

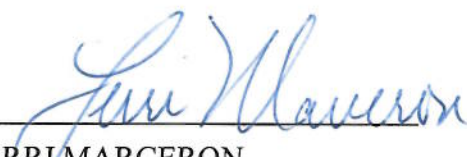
Pursuant to Title 36 CFR 261.50 (e) the following are exempt from this order:

1. Any person with a permit authorizing the otherwise prohibited act or omission.
2. Any Federal, State, or local officer, or member of any organized rescue or fire fighting force in the performance of an official duty.

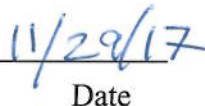
These prohibitions are in addition to the general prohibitions in 36 CFR Part 261, Subpart A.

This order is effective until rescinded.

Executed in Anchorage, Alaska, this 29th day of November, 2017.



TERRI MARCERON  
Forest Supervisor  
Chugach National Forest



Date

### Penalty:

Violations of these Prohibitions are punishable by a fine of not more than \$5,000 for an individual or \$10,000 for an organization, or imprisonment for not more than six months or both. [16 U.S.C. 551, and 18 U.S.C. 3559 and 3571]

### Notification:

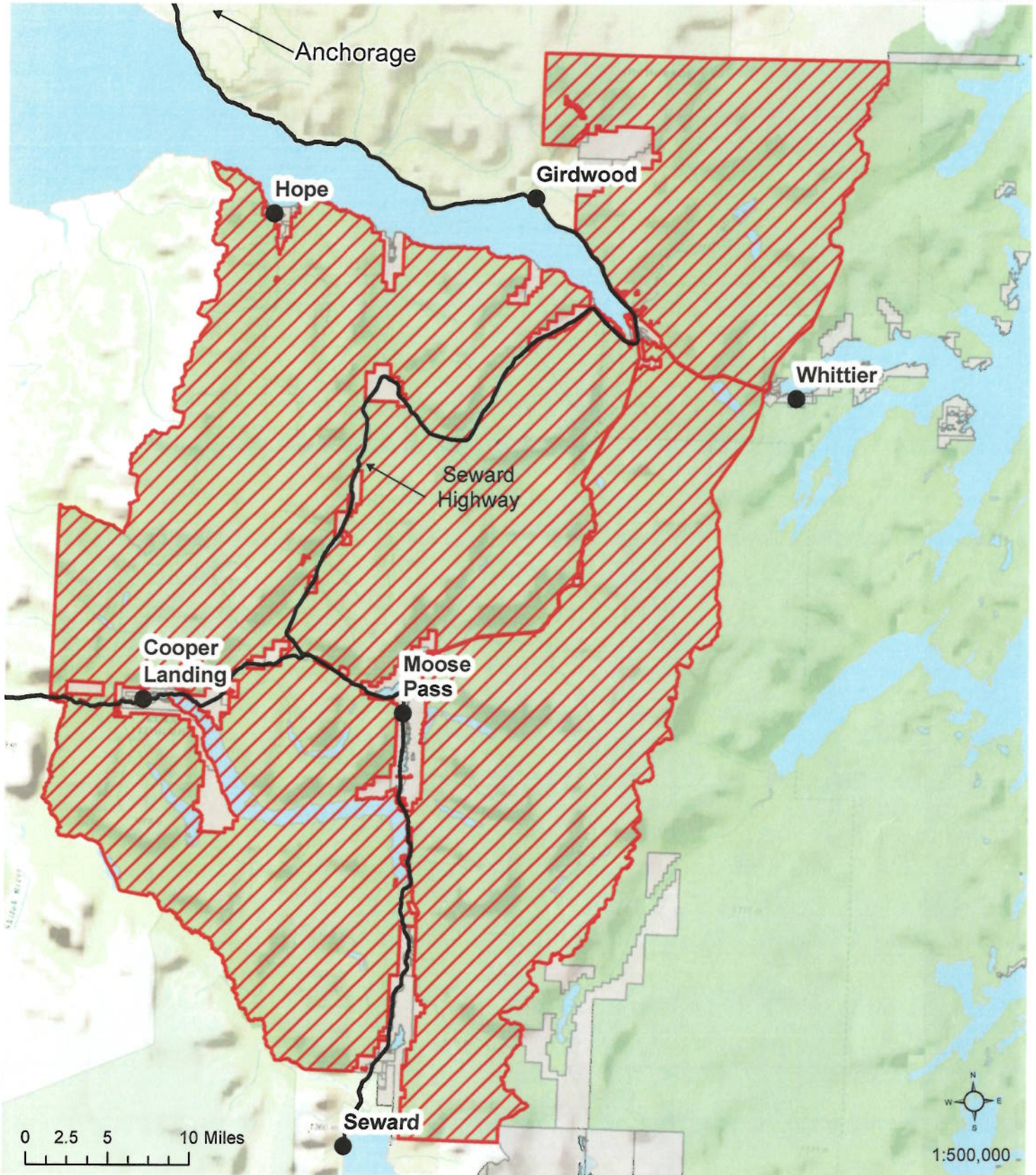
A copy of this order shall be posted as prescribed under 36 CFR 261.51

# Winter Motorized Vehicle Closure

KENAI PENINSULA  
Glacier and Seward Districts

Order No.10-04-00-18-02

Attachment: A



## Legend

- |                                                                                                 |                                                                                                     |
|-------------------------------------------------------------------------------------------------|-----------------------------------------------------------------------------------------------------|
|  Closure Area |  National Forest |
|  Roads        |  Other Ownership |

Pursuant to Title 36 Code of Federal Regulations 261.50 (a) and (b), the following restrictions are in effect on all lands administered by the Chugach National Forest on the Seward and Glacier Ranger Districts. These restrictions are in addition to those enumerated in Subpart A, Part 261, Title 36, Code of Federal Regulations, and become effective when signed and will remain in effect until rescinded.