

# Oconee National Forest Southern Pine Beetle Survey September 27, 2017

## SPB Damage Points

### # Trees Affected

- ▲ 1 - 5
- ▲ 6 - 15
- ▲ 16 - 30
- ▲ > 30

## SPB Damage Areas

### % Area Affected

- Very Light (1 - 3%)
- Light (4 - 10%)
- Moderate (11-29%)
- Severe (30 - 50%)
- Very Severe (>50%)

## IPS Damage Points

### # Trees Affected

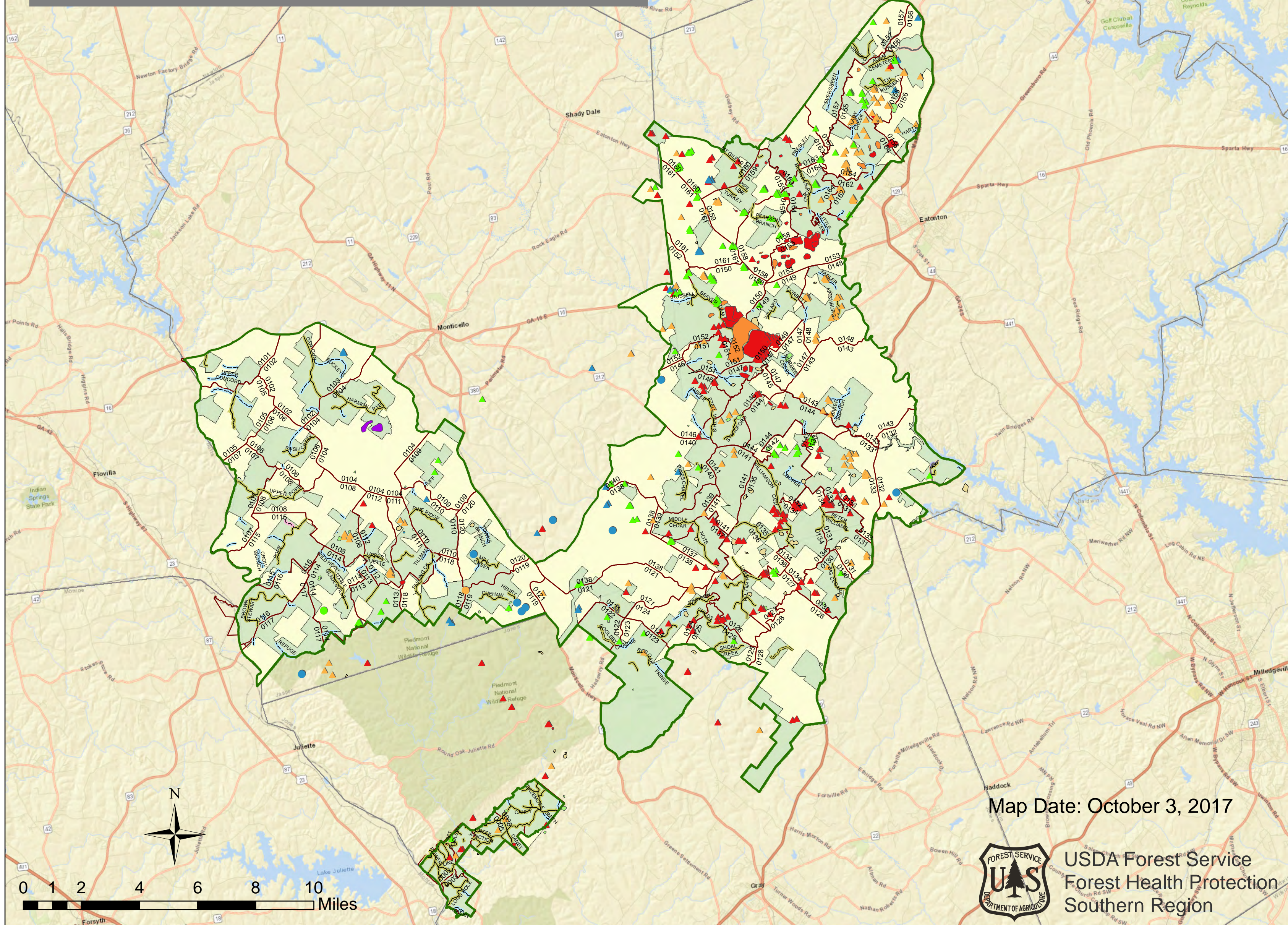
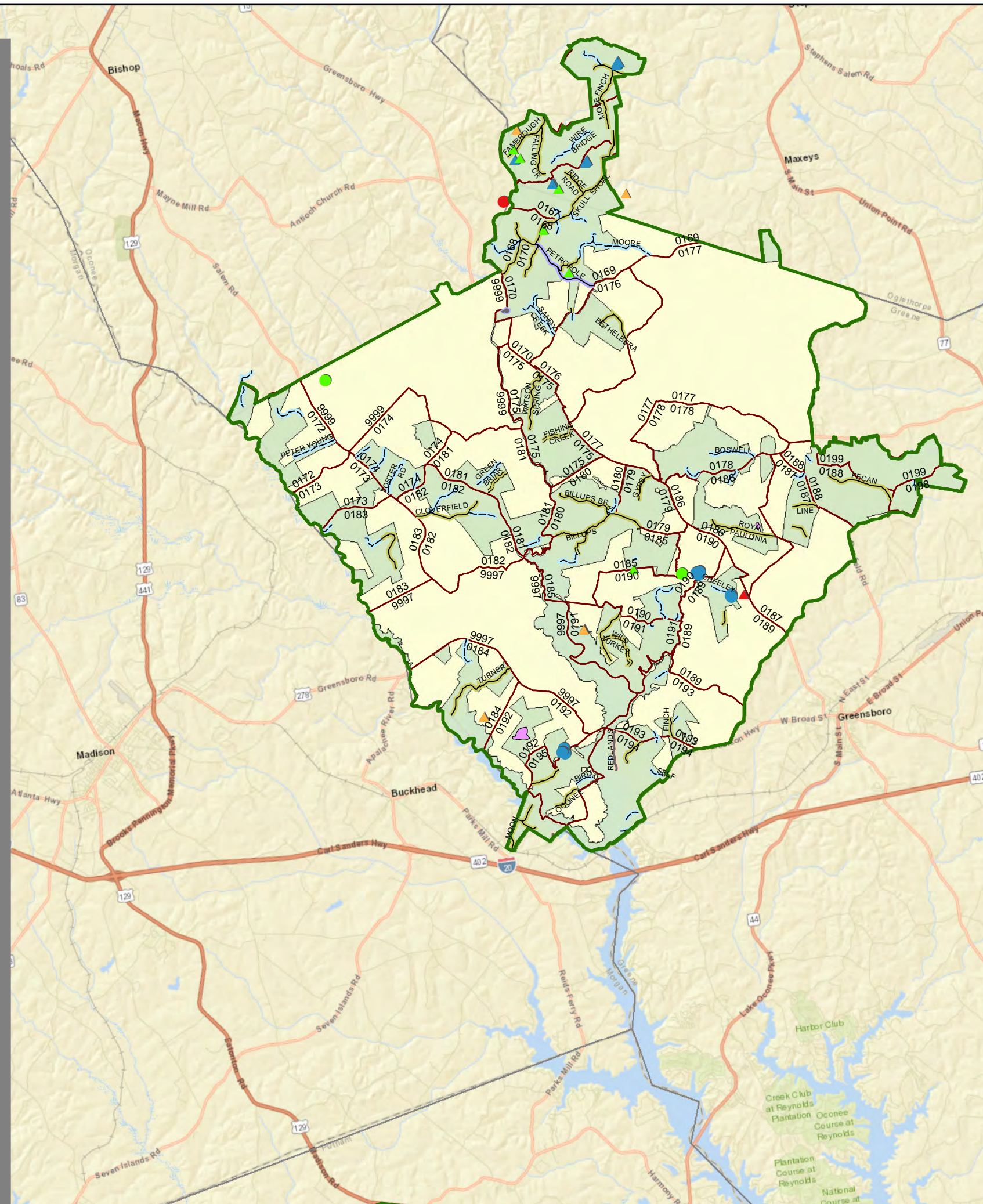
- 1 - 5
- 6 - 15
- 16 - 30
- > 30

## IPS Damage Areas

### % Area Affected

- Moderate (11-29%)
- Very Severe (>50%)

- Non-FS Lands
- National Forest
- Compartments
- Road - Light Duty - Paved
- Road - Light Duty - Gravel
- Road - Light Duty - Dirt
- Road - Unimproved
- 5 - HIGH DEGREE OF USER COMFORT
- 4 - MODERATE DEGREE OF USER COMFORT
- 3 - SUITABLE FOR PASSENGER CARS
- 2 - HIGH CLEARANCE VEHICLES
- 1 - BASIC CUSTODIAL CARE (CLOSED)
- 0 - NOT MAINTAINED



Map Date: October 3, 2017



USDA Forest Service  
Forest Health Protection  
Southern Region

0 1 2 4 6 8 10 Miles