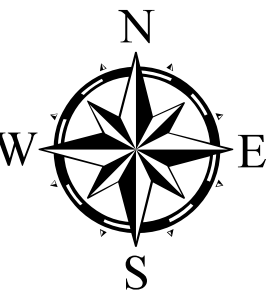
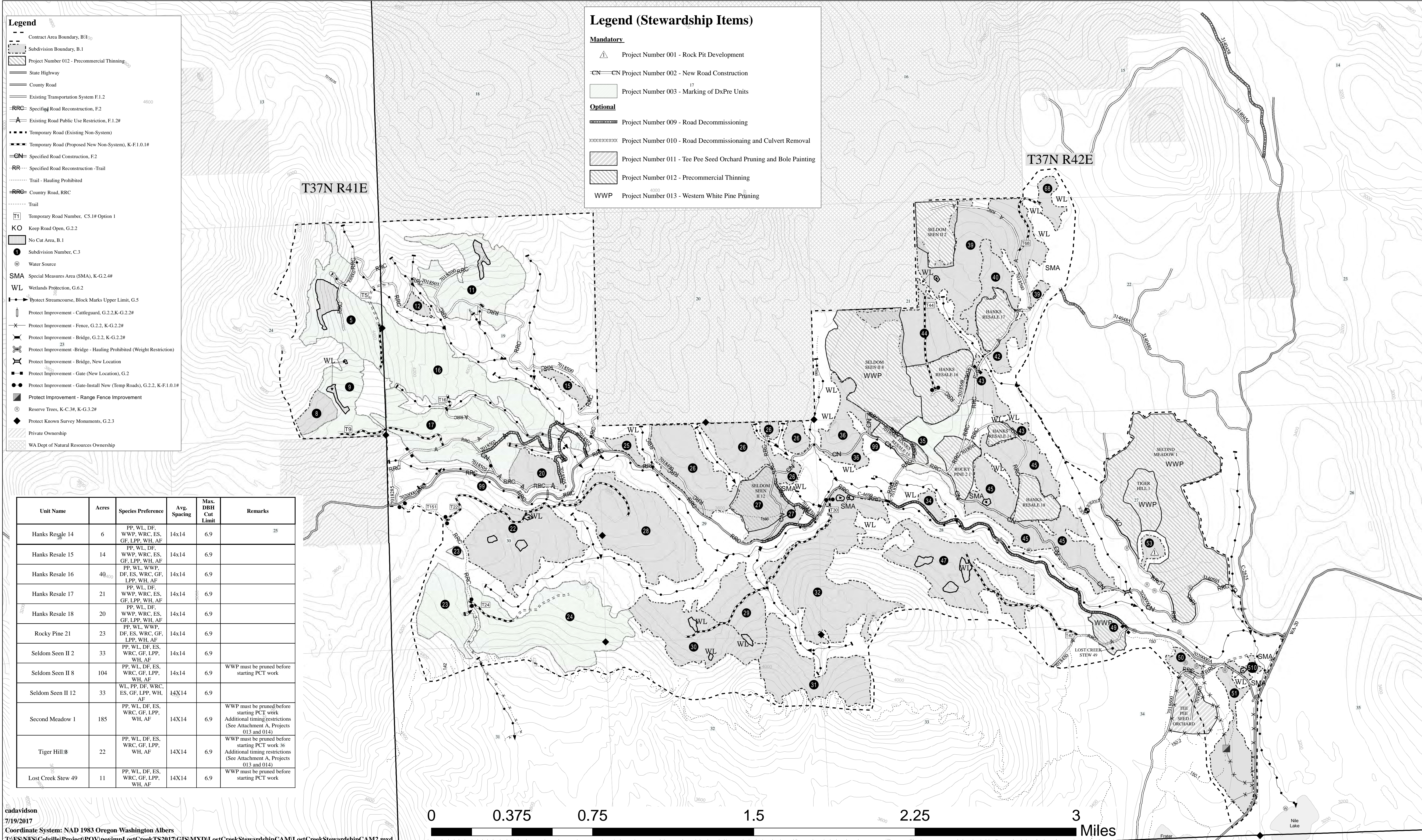


Lost Creek Stewardship Contract Area Map

Sullivan Lake Ranger District, Colville National Forest



1:12,000



Legend

- - - Contract Area Boundary, B.1.0
- - - Subdivision Boundary, B.1
- ▨ Project Number 012 - Precommercial Thinning
- == State Highway
- == County Road
- == Existing Transportation System F.1.2
- RRR- Specific Road Reconstruction, F.2
- Existing Road Public Use Restriction, F.1.2#
- Temporary Road (Existing Non-System)
- Temporary Road (Proposed New Non-System), K-F.1.0.1#
- Specified Road Construction, F.2
- RR- Specified Road Reconstruction -Trail
- Trail - Hauling Prohibited
- RRR- Country Road, RRC
- Trail
- T1 Temporary Road Number, C5.1# Option 1
- KO Keep Road Open, G.2.2
- No Cut Area, B.1
- ① Subdivision Number, C.3
- ⊙ Water Source
- SMA Special Measures Area (SMA), K-G.2.4#
- WL Wetlands Protection, G.6.2
- Protect Streamcourse, Block Marks Upper Limit, G.5
- Protect Improvement - Cattleguard, G.2.2.K-G.2.2#
- Protect Improvement - Fence, G.2.2, K-G.2.2#
- Protect Improvement - Bridge, G.2.2, K-G.2.2#
- Protect Improvement - Bridge - Hauling Prohibited (Weight Restriction)
- Protect Improvement - Bridge, New Location
- Protect Improvement - Gate (New Location), G.2
- Protect Improvement - Gate-Install New (Temp Roads), G.2.2, K-F.1.0.1#
- Protect Improvement - Range Fence Improvement
- ⊙ Reserve Trees, K-C.3#, K-G.3.2#
- ◆ Protect Known Survey Monuments, G.2.3
- Private Ownership
- WA Dept of Natural Resources Ownership

Legend (Stewardship Items)

Mandatory

- △ Project Number 001 - Rock Pit Development
- CN—CN Project Number 002 - New Road Construction
- Project Number 003 - Marking of DxPre Units

Optional

- Project Number 009 - Road Decommissioning
- Project Number 010 - Road Decommissioning and Culvert Removal
- ▨ Project Number 011 - Tee Pee Seed Orchard Pruning and Boie Painting
- ▨ Project Number 012 - Precommercial Thinning
- WWP Project Number 013 - Western White Pine Pruning

Unit Name	Acres	Species Preference	Avg. Spacing	Max. DBH Cut Limit	Remarks
Hanks Resale 14	6	PP, WL, DF, WWP, WRC, ES, GF, LPP, WH, AF	14x14	6.9	
Hanks Resale 15	14	PP, WL, DF, WWP, WRC, ES, GF, LPP, WH, AF	14x14	6.9	
Hanks Resale 16	40	PP, WL, DF, WWP, WRC, ES, GF, LPP, WH, AF	14x14	6.9	
Hanks Resale 17	21	PP, WL, DF, WWP, WRC, ES, GF, LPP, WH, AF	14x14	6.9	
Hanks Resale 18	20	PP, WL, DF, WWP, WRC, ES, GF, LPP, WH, AF	14x14	6.9	
Rocky Pine 21	23	PP, WL, WWP, DF, ES, WRC, GF, LPP, WH, AF	14x14	6.9	
Seldom Seen II 2	33	PP, WL, DF, ES, WRC, GF, LPP, WH, AF	14x14	6.9	WWP must be pruned before starting PCT work
Seldom Seen II 8	104	PP, WL, DF, ES, WRC, GF, LPP, WH, AF	14x14	6.9	WWP must be pruned before starting PCT work
Seldom Seen II 12	33	PP, WL, DF, ES, WRC, GF, LPP, WH, AF	14x14	6.9	WWP must be pruned before starting PCT work
Second Meadow 1	185	PP, WL, DF, ES, WRC, GF, LPP, WH, AF	14x14	6.9	Additional timing restrictions (See Attachment A, Projects 013 and 014)
Tiger Hill	22	PP, WL, DF, ES, WRC, GF, LPP, WH, AF	14x14	6.9	Additional timing restrictions (See Attachment A, Projects 013 and 014)
Lost Creek Stew 49	11	PP, WL, DF, ES, WRC, GF, LPP, WH, AF	14x14	6.9	WWP must be pruned before starting PCT work

