

# Dispersed Camping

## on the Sawtooth National Recreation Area



©

### Be Bear Aware!

- When not in use, all food, scented items, or refuse **MUST** be stored within a secured vehicle or hard sided trailer (no open top jeeps, pickup beds or coolers).

### Dump Stations/Showers

- RV dump stations are located at North Fork, Smiley Creek, Redfish Lake and the Stanley Ranger Station.
- Showers can be purchased at Redfish Lake Complex, Easley Hot springs and the YMCA located in Ketchum.

### Pick A Campsite

- Choose a dry site at least 100 feet from all water sources, including lakes, streams and ponds—to reduce pollution and erosion.
- Minimize your impacts by using established sites
- Be respectful of other campers
- Leave the site better than you found it.



### Campfires, Trash and Human Waste

- Bury human waste 6-8" deep and at least 200 feet from any body of water to prevent contamination of water supplies. Take your toilet paper with you.
- Pack It In—Pack It Out. Carry out all trash and check your fire ring for unburned refuse. Practice Leave No Trace principles at all times.
- All dish washing and bathing must be done away from water supplies.
- Gather only dead and downed wood.
- Before you leave your campfire, make sure it is completely out! You should be able to place your hands in the ashes. Use existing fire rings. Check fire restrictions before hand and bring plenty of water to drown it.

- **Rules for Dispersed Camping on the Sawtooth National Recreation Area**
- Camp within 300 ft. of a numbered legal Forest Service Road. May 1st to November 30th (dependent on road and weather conditions). Please see local regulations and Motor Vehicle Use Map (MVUM).
- **South of Galena Summit:** *(within the Wood River Drainage)* 16 day camping limit. May not relocate anywhere in the Ketchum RD or Sawtooth NRA dispersed areas south of Galena Summit for 14 days.
- **North of Galena Summit:** 16 day camping limit. Must relocate a minimum of 10 miles from the original site and remain gone for 14 days.
- **Salmon River Corridor:** 10 day camping limit. Must relocate a minimum of 5 miles from the original site for 14 days.
  - *Refer to the attached map for allowed camping areas.*

### Sawtooth National Forest Offices

Open: Monday—Friday 8:30 a.m.—5:00 p.m.

**Forest Supervisor's Office**  
2647 Kimberly Road East  
Twin Falls, ID 83301  
Phone #: 208-737-3200

**Sawtooth National Recreation Area, Headquarters**  
5 North Fork Canyon Road  
Ketchum, ID 83340  
Phone #: 208-727-5000

**Stanley Ranger Station**  
HC 64, Box 9900  
Stanley, ID 83278  
Phone #: 208-774-3000

**Ketchum Ranger District**  
206 Sun Valley Road  
Ketchum, ID 83340  
208-622-5371


**Fairfield Ranger District**  
102 1st Street East  
Fairfield, ID 83327  
Phone #: 208-764-3202

**Minidoka Ranger District**  
2306 Hiland Avenue  
Burley, ID 83318  
Phone #: 208-678-0430

### What is Dispersed Camping?

- Camping anywhere in the National Forest **OUTSIDE** of a designated campground. In these undeveloped areas of the forest, there are no services (such as potable water and trash removal) and generally no facilities (such as tables and toilets).

### What is Designated Dispersed Camping?

- Designated dispersed camping areas have non-fee dispersed sites that are specifically located to minimize resource impacts to popular areas. Some sites may contain tables, fire rings and pit toilets. There is no potable water and trash must be packed out.
- Camping in these areas is allowed only where designated by this symbol.
- Refer to the attached map for the location of these  Areas.

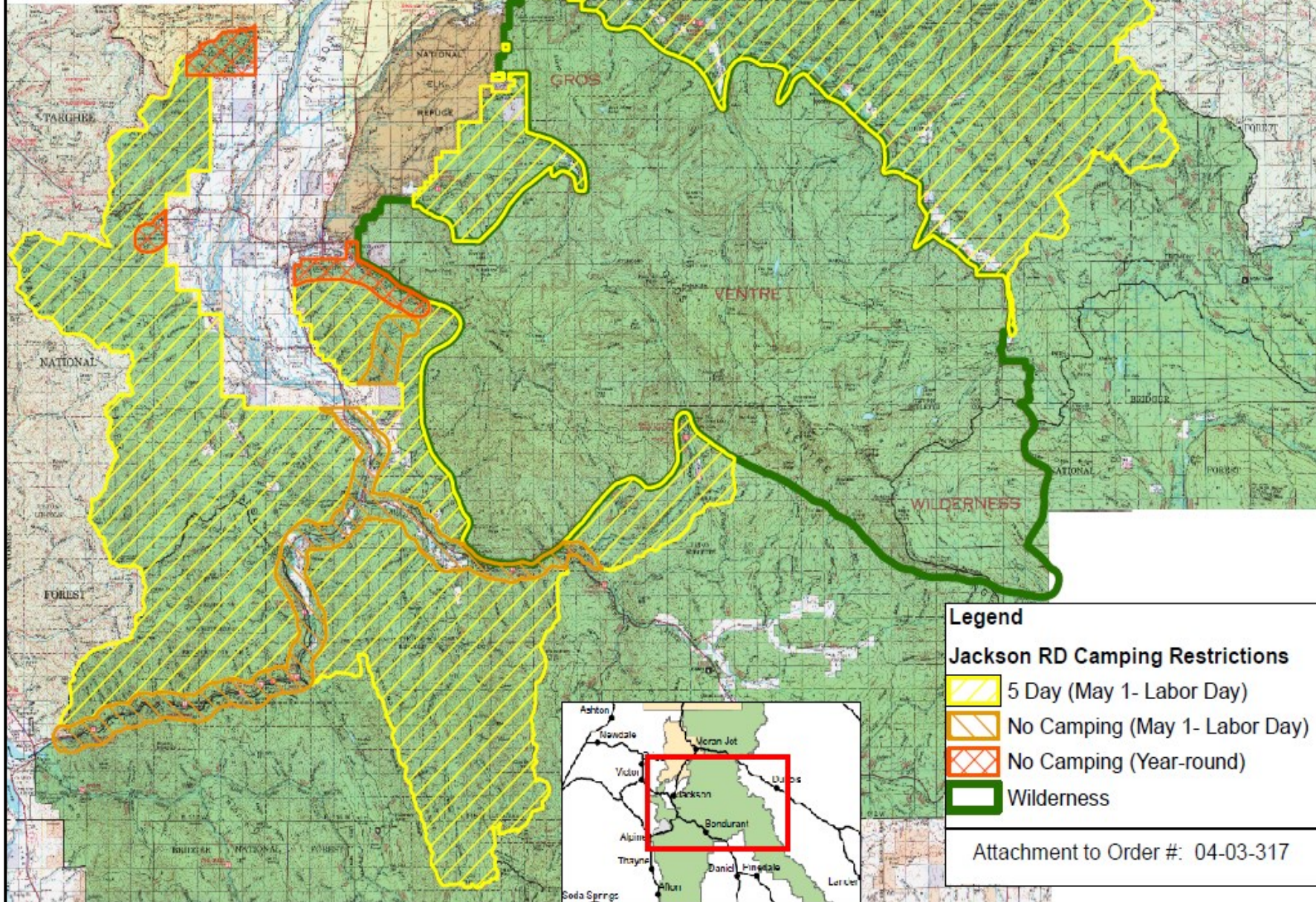


# Jackson Ranger District Camping Restrictions

Bridger-Teton National Forest



0 2.5 5 10 Miles



## Quick Packing Tips

- Water
- Shovel
- Food Storage
- Garbage Bags
- Map
- Bucket
- Flashlight

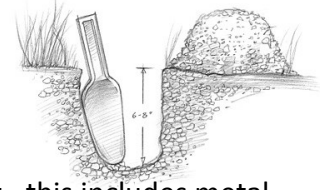
## Campfires

- **Before you leave your campfire make sure it is completely out!**
- You should be able to place your hands in the ashes.
- Use existing fire rings.
- Check fire restrictions before hand. Website: [www.fs.usda.gov/sawtooth](http://www.fs.usda.gov/sawtooth)
- Bring plenty of water. Several Gallons.



## Using the Bathroom in the Woods

- Dispose of human waste properly.
- Dig a hole 6 inches deep (cathole), 200 feet away from water sources, fill hole in when done.
- Take your toilet paper with you...



## Trash

- All trash **MUST** be packed out– this includes metal and glass from your fire ring

CRF 261.11(b)