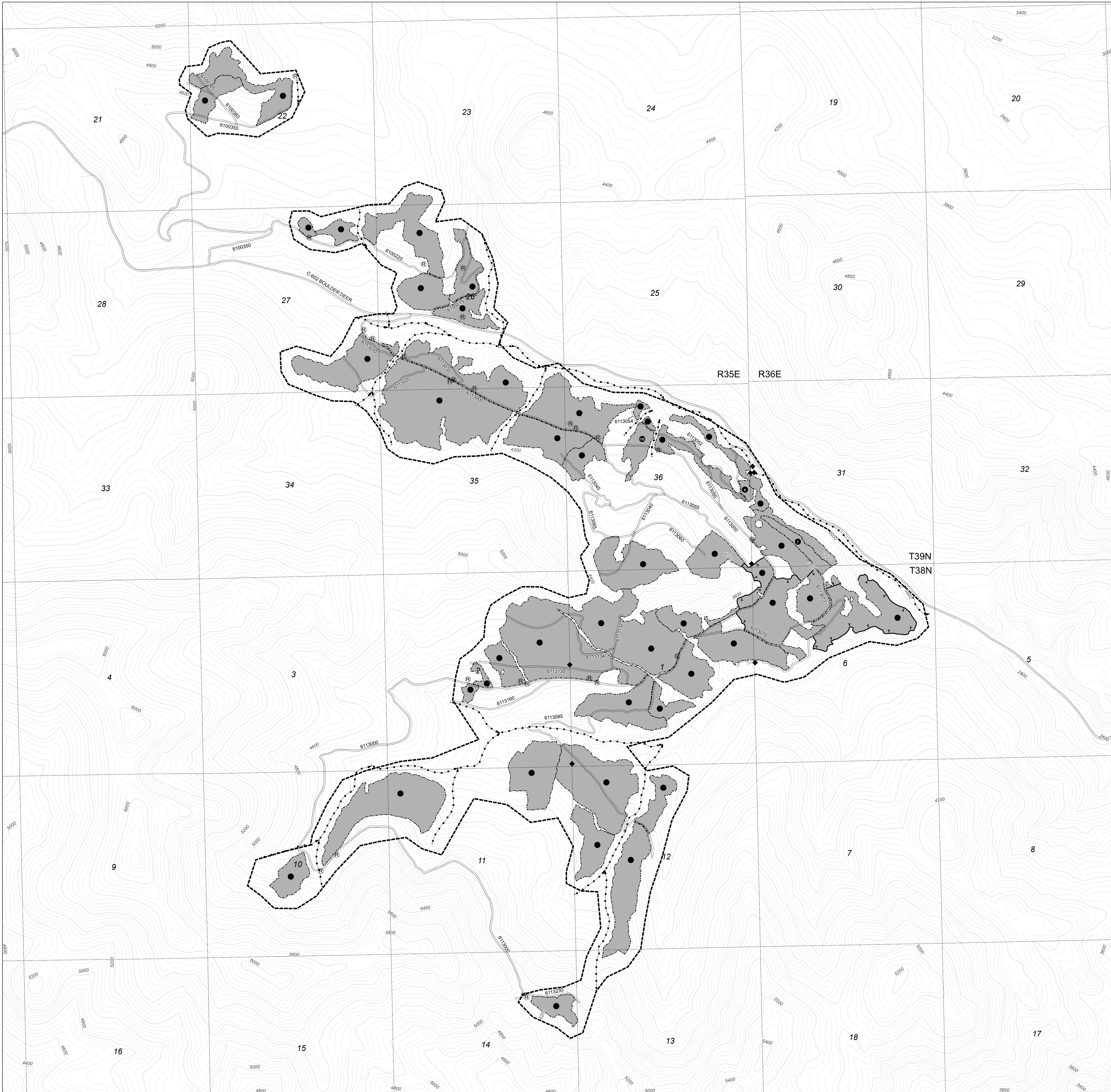


**Deer Jasper Stewardship
Contract Area and Slash Disposal Map
Three Rivers Ranger District
Colville National Forest
page 1 of 1**

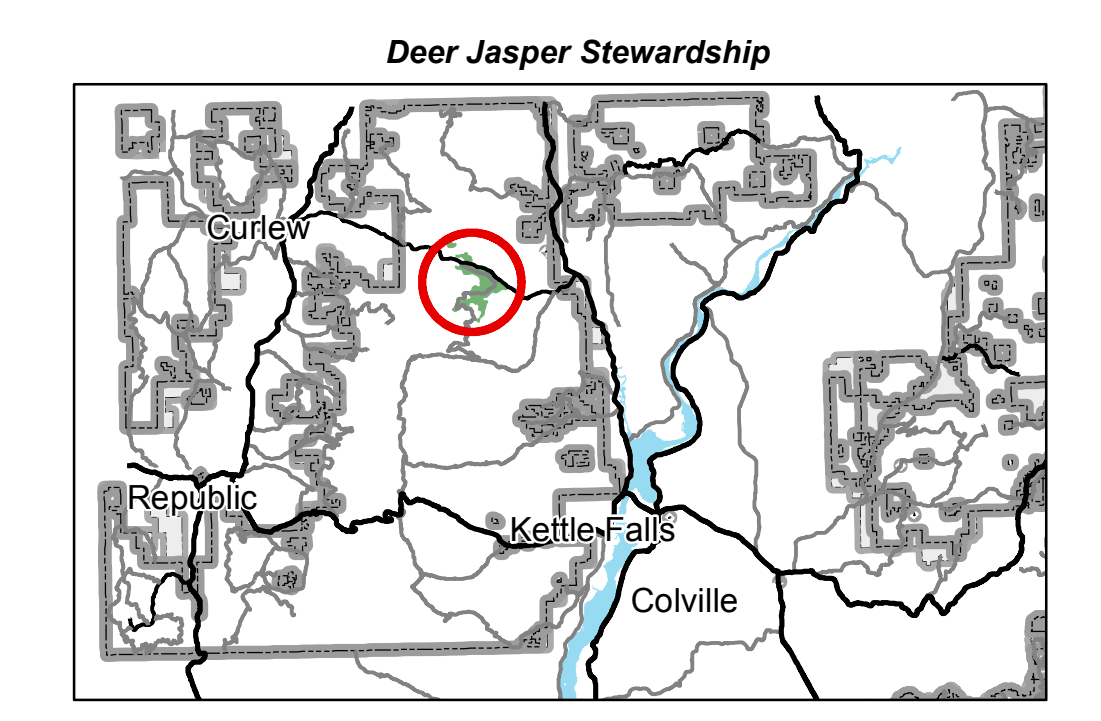
Legend

- Contract Area Boundary, B.1
- Subdivision Boundary, B.1
- Existing Transportation System, F.1.2
- Subdivision, C.3
- Reserve Trees, K-C.3#, K-G.3.2#
- Protect Improvements-Cattle Guard/Gate, K-G.2.2#
- Protect Known Survey Monument, G.2.3
- Tractor Fireline, K-G.7.4.2#
- Protect Streamcourse, G.5
- Winter Log K-G.3.1.5#
- Cut-To-Length K-G.4.2#, K-G.3.1.5#
- Forwarder K-G.4.2#
- Leave Tree Mark K-C.3.5.7#
- Individual Tree Mark K-C.3.5.7#
- Designation By Prescription K-C.3.5.5#



Notes
Industrial Fire Precaution Class Zone is 686. K-H.7.2
Landings, temporary roads, and skid trails are to be scarified to a depth of 4 inches and seeded where designated. K-G.6.0#

Subdivision B.1	Acres	Designation	Restrictions K-G.3.1.5#	Mandatory Projects K-G.9#
6	4	DxPre		1, 3
7	14	LTM		3
16	41	LTM		3
18	19	LTM	W/CTL/F	3
24	60	LTM		3
25	31	LTM		3
26	22	LTM		3
28	20	LTM		3
63	52	DxPre		1, 2, 3
66	119	DxPre		1, 2, 3
67	175	DxPre		1, 2, 3
68	47	DxPre		1, 2, 3
69	70	DxPre		1, 2, 3
71	28	DxPre		1, 3
72	67	DxPre		1, 3
73	244	DxPre		1, 2, 3
74	50	DxPre		1, 2, 3
75	43	LTM	W/CTL/F	2, 3
81	75	DxPre		1, 3
82	34	DxPre	W/CTL/F	1, 3
83	43	DxPre		1, 3
84	19	DxPre		1, 2, 3
86	44	DxPre		1, 2, 3
89	100	LTM	W/CTL/F	3
90	131	DxPre		1, 2, 3
91	30	DxPre		1, 3
93	54	DxPre		1, 3
94	15	ITM		2, 3
132	17	LTM		2, 3



02/28/2017 jcd

1:11,500