

# Pre-Draft May 2017 Management Areas Nantahala & Pisgah National Forest Fontana Lake Geographic Area

1:42,000



**Legend**

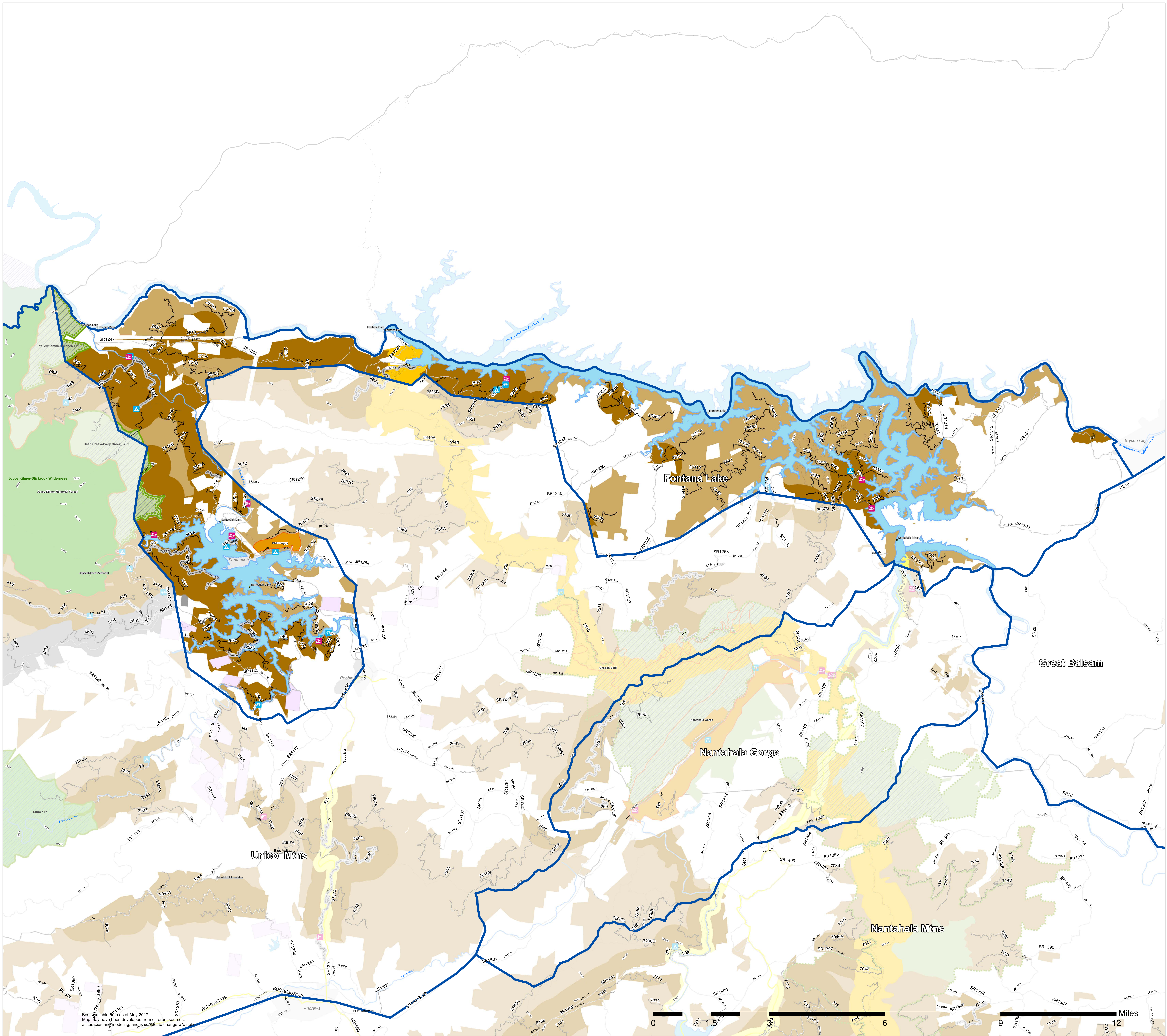
- Geographic Areas
- \*Proposed by the Public for FS Analysis as Recommended Wilderness - since Summer 2016
- \*Proposed by the FS for EIS Analysis as Recommended Wilderness - Summer 2016
- Inventoried Roadless Areas
- Interface
- Matrix
- Backcountry, Including Inventoried Roadless Areas
- Appalachian Trail
- Experimental Forests
- Special Interest Areas & Research Natural Areas
- Cradle of Forestry
- Blue Ridge Parkway & Byways
- Trail of Tears & Overmountain Victory Trail
- Wild and Scenic River Corridor
- Wilderness Study Area
- Wilderness
- Roan Mountain
- Developed Recreation Sites
- Admin Sites
- Full SIA Boundary

**Roads**

**SYMBOL**

- 1 Roads Open to All Vehicles, Yearlong
- 2 Roads Open to All Vehicles, Seasonal
- 3 Roads Open to Highway Legal Vehicles Only, Yearlong
- 4 Roads Open to Highway Legal Vehicles Only, Seasonal
- 11 Special Designation, Yearlong
- 12 Special Designation, Seasonal
- 13 Interstate
- 14 State or US Highway
- 15 Other Public Roads
- Closed FS Roads
- Trails
- Municipalities-NC

\* Some members of the public requested no additional wilderness recommendations. This is shown by looking at the management areas without these lines.



DRAFT DRAFT DRAFT

May 2017 - Under Development

Best available as of May 2017  
Map may have been developed from different sources,  
accuracies and modeling, and is subject to change with new

