

# Pre-Draft May 2017 Management Areas Nantahala & Pisgah National Forest Pisgah Ledge Geographic Area

1:42,000



**Legend**

- Geographic Areas
- \*Proposed by the Public for FS Analysis as Recommended Wilderness - since Summer 2016
- \*Proposed by the FS for EIS Analysis as Recommended Wilderness - Summer 2016
- Inventoried Roadless Areas
- Interface
- Matrix
- Backcountry, Including Inventoried Roadless Areas
- Appalachian Trail
- Experimental Forests
- Special Interest Areas & Research Natural Areas
- Cradle of Forestry
- Blue Ridge Parkway & Byways
- Trail of Tears & Overmountain Victory Trail
- Wild and Scenic River Corridor
- Wilderness Study Area
- Wilderness
- Roan Mountain
- Developed Recreation Sites
- Admin Sites
- Full SIA Boundary

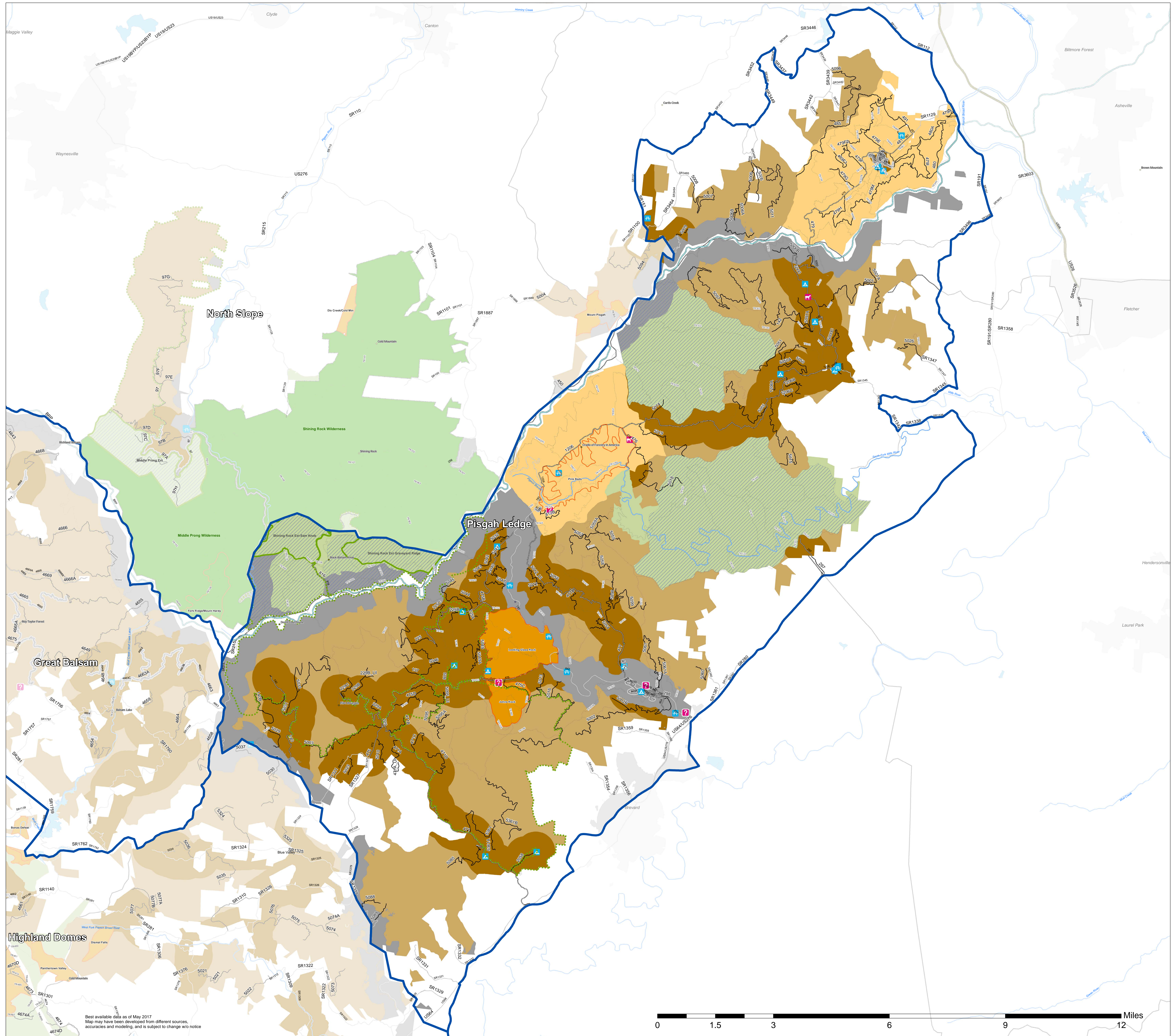
**Roads**

**SYMBOL**

- 1 Roads Open to All Vehicles, Yearlong
- 2 Roads Open to All Vehicles, Seasonal
- 3 Roads Open to Highway Legal Vehicles Only, Yearlong
- 4 Roads Open to Highway Legal Vehicles Only, Seasonal
- 11 Special Designation, Yearlong
- 12 Special Designation, Seasonal
- 13 Interstate
- 14 State or US Highway
- 15 Other Public Roads
- Closed FS Roads
- Trails
- Municipalities-NC

\* Some members of the public requested no additional wilderness recommendations. This is shown by looking at the management areas without these lines.

We are currently in discussions with the Eastern Band of Cherokee Indians, the Cherokee Nation and the United Keetoowah Band of Cherokee Indians to identify places on the forest that will receive Special Interest Area designation because they have unique connections to Tribes and are important to Tribal cultural identity, history, culture, beliefs and traditions. Exact locations are being determined.



Best available data as of May 2017  
Map may have been developed from different sources, accuracies and modeling, and is subject to change w/o notice

DRAFT DRAFT DRAFT

May 2017 - Under Development