


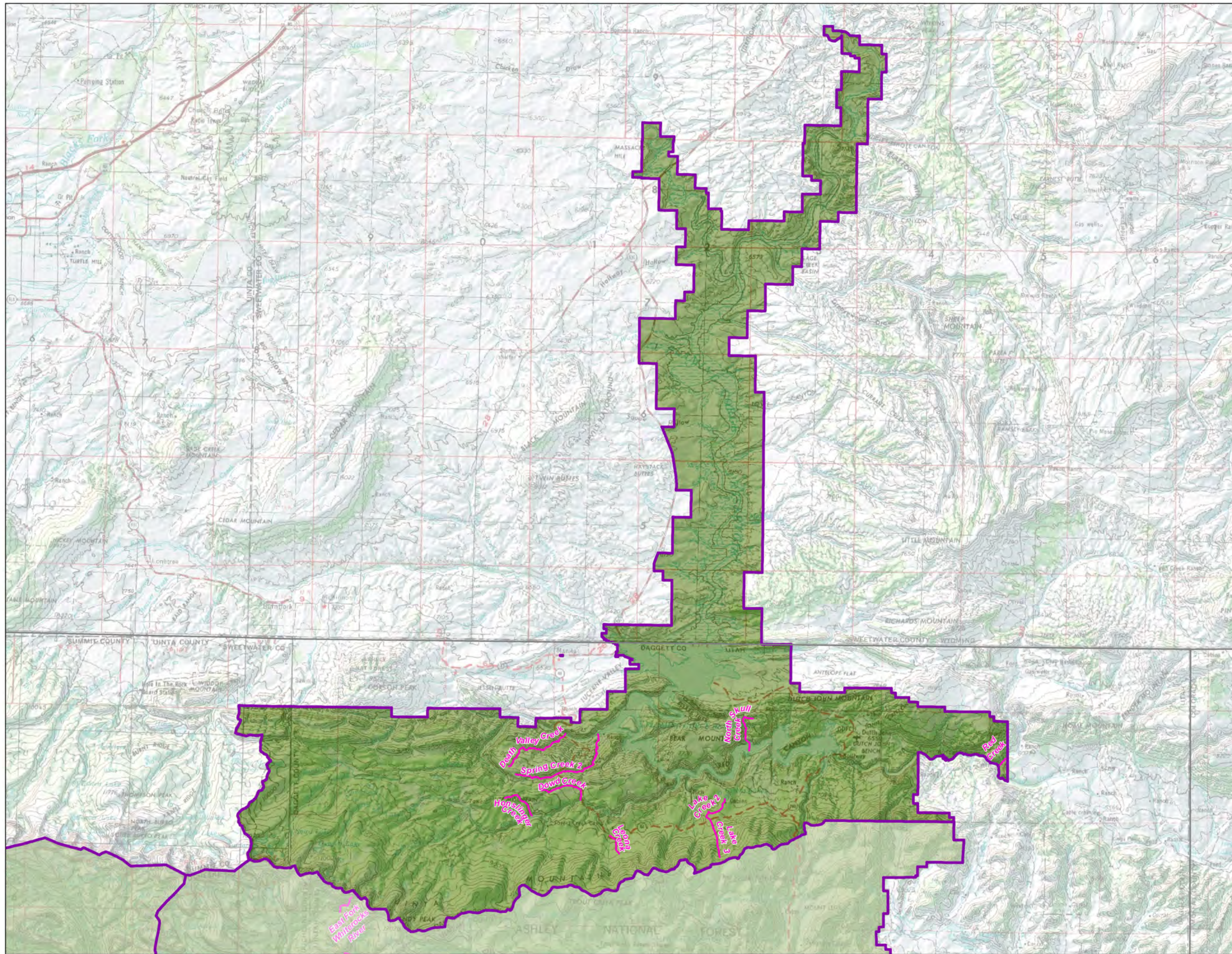
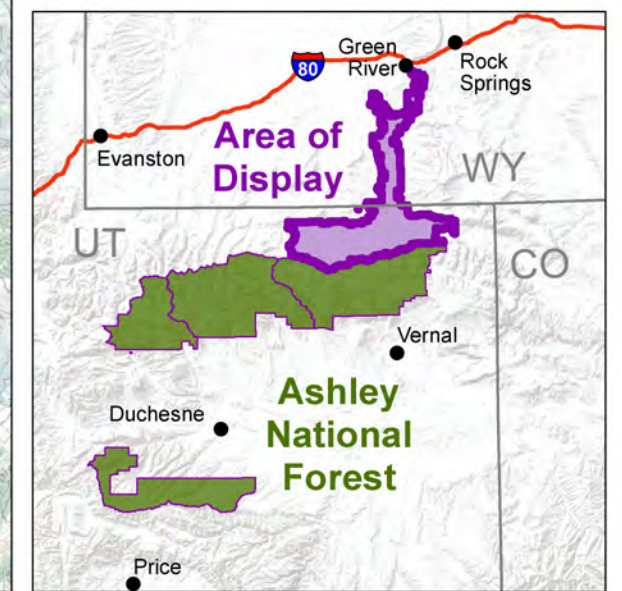


# Ashley National Forest Wild and Scenic River Analysis Flaming Gorge Ranger District Map I

-  2017 inventory- free flowing
-  Ranger District boundary
-  Ashley National Forest

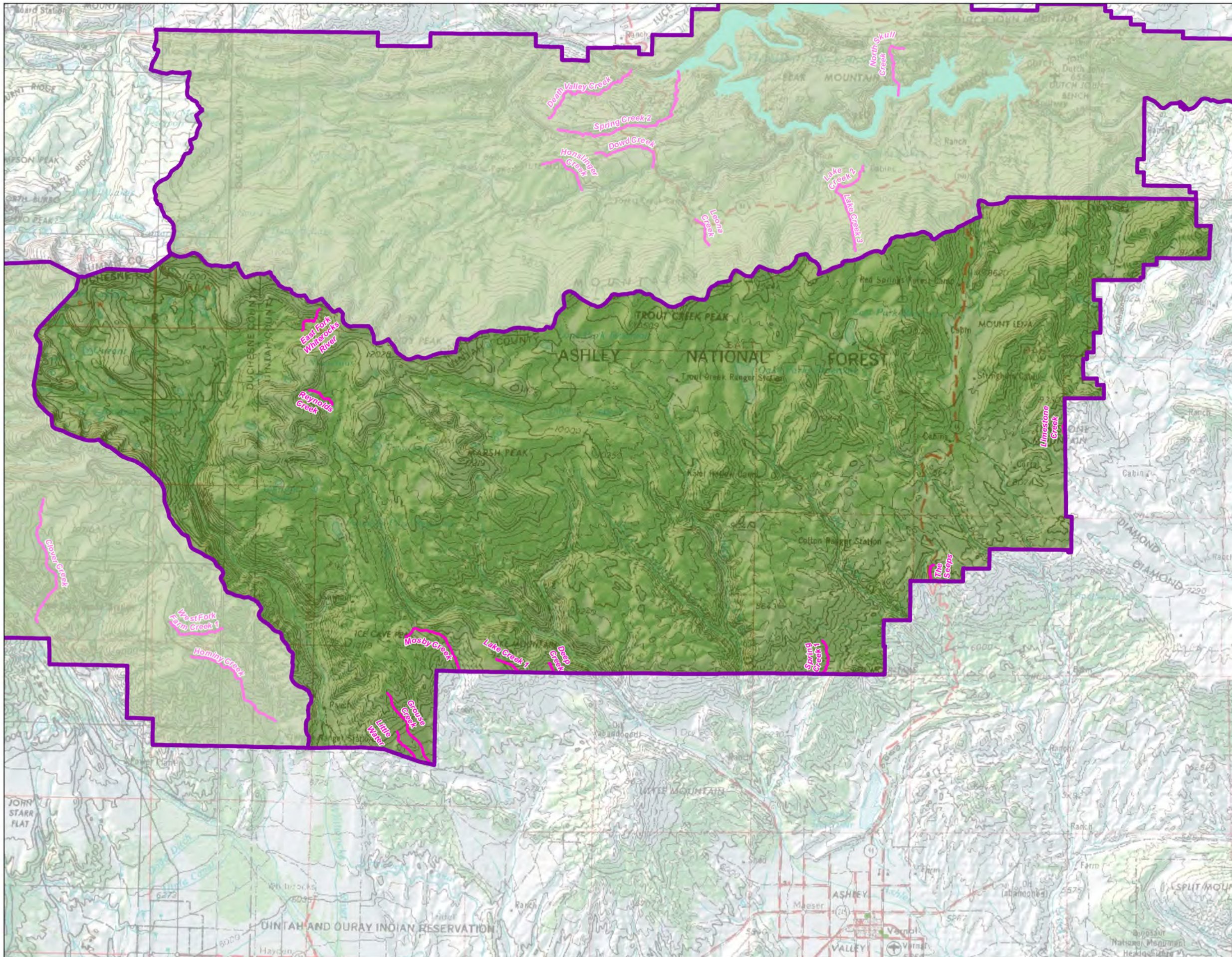


Source: Forest Service GIS 2017  
 March 23, 2017  
 R4WSR\_Ashley\_RangerDistricts\_page1\_V01.pdf  
 This product is reproduced from geospatial information prepared by the USDA, Forest Service. The Forest Service makes no expressed or implied warranty, including warranty of merchantability and fitness, with respect to the character, function, or capabilities of the data or their appropriateness for any user's purposes, and reserves the right to correct, update, modify or replace this geospatial information without notification.

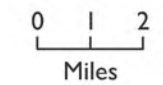




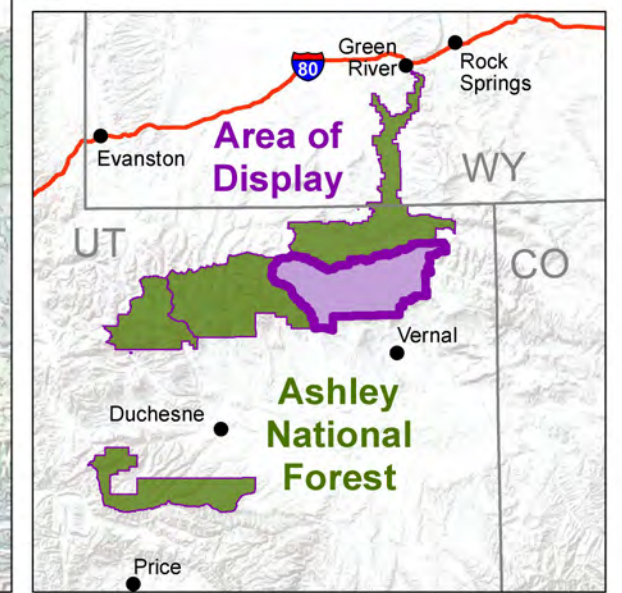
# Ashley National Forest Wild and Scenic River Analysis Vernal Ranger District Map 2



-  2017 inventory- free flowing
-  Flaming Gorge Reservoir not free flowing
-  Ranger District boundary
-  Ashley National Forest






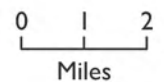
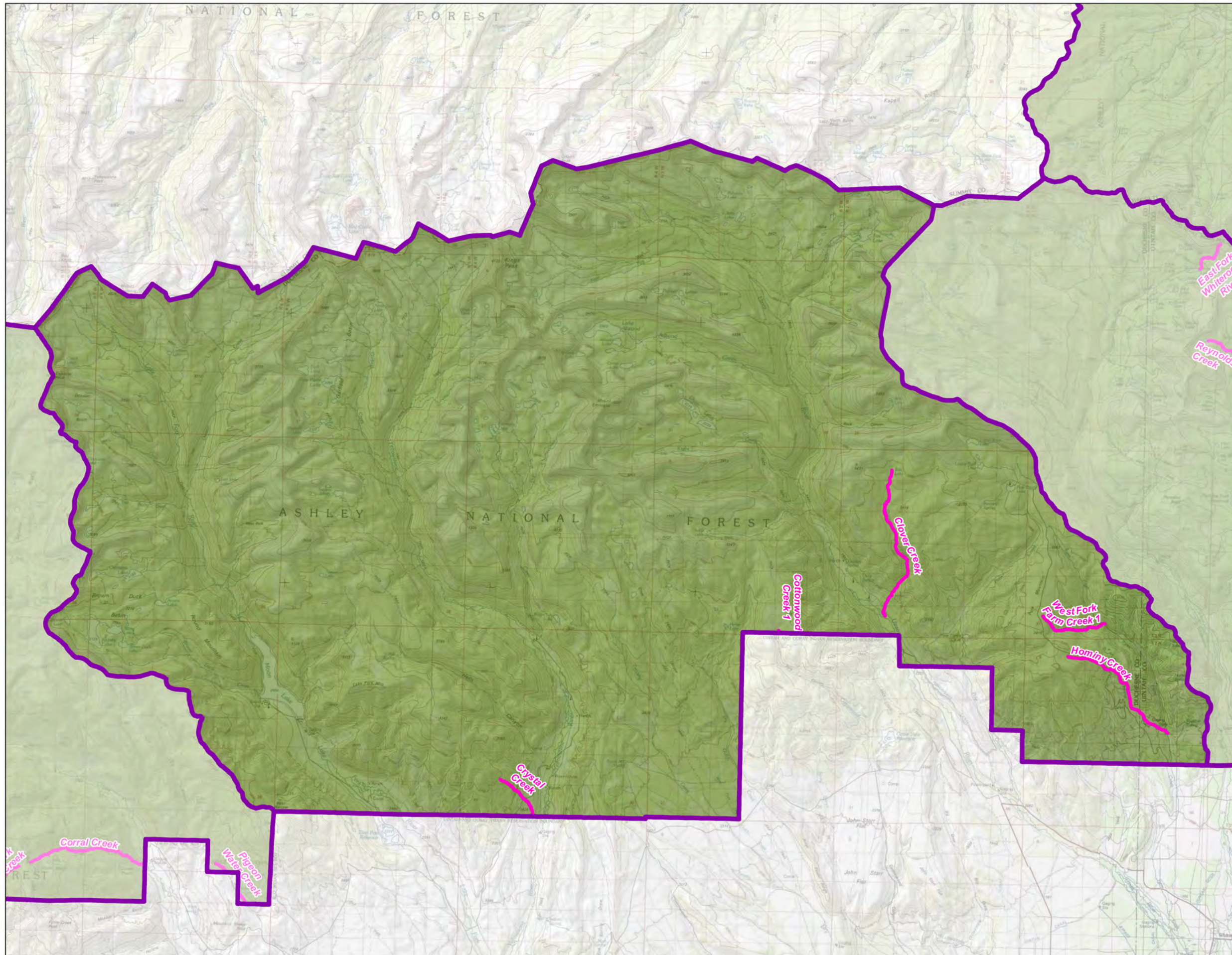
Source: Forest Service GIS 2017  
 March 23, 2017  
 R4WSR\_Ashley\_RangerDistricts\_V01.pdf  
 This product is reproduced from geospatial information prepared by the USDA, Forest Service. The Forest Service makes no expressed or implied warranty, including warranty of merchantability and fitness, with respect to the character, function, or capabilities of the data or their appropriateness for any user's purposes, and reserves the right to correct, update, modify, or replace this geospatial information without notification.



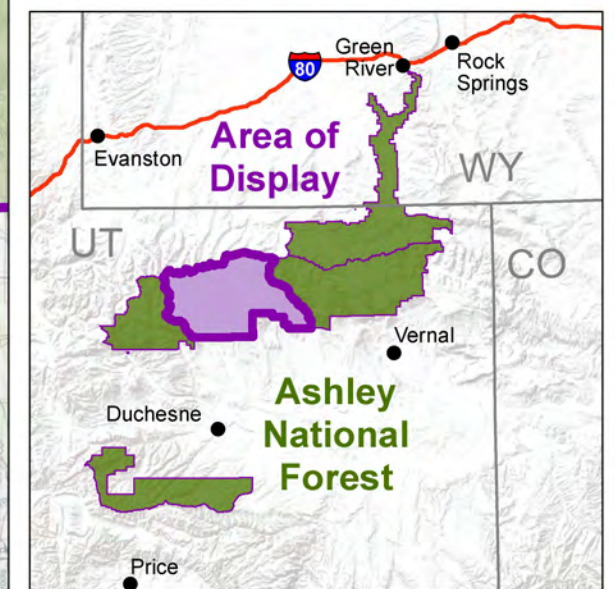


# Ashley National Forest Wild and Scenic River Analysis Roosevelt Ranger District Map 3

-  2017 inventory- free flowing
-  Ranger District boundary
-  Ashley National Forest






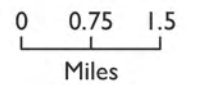
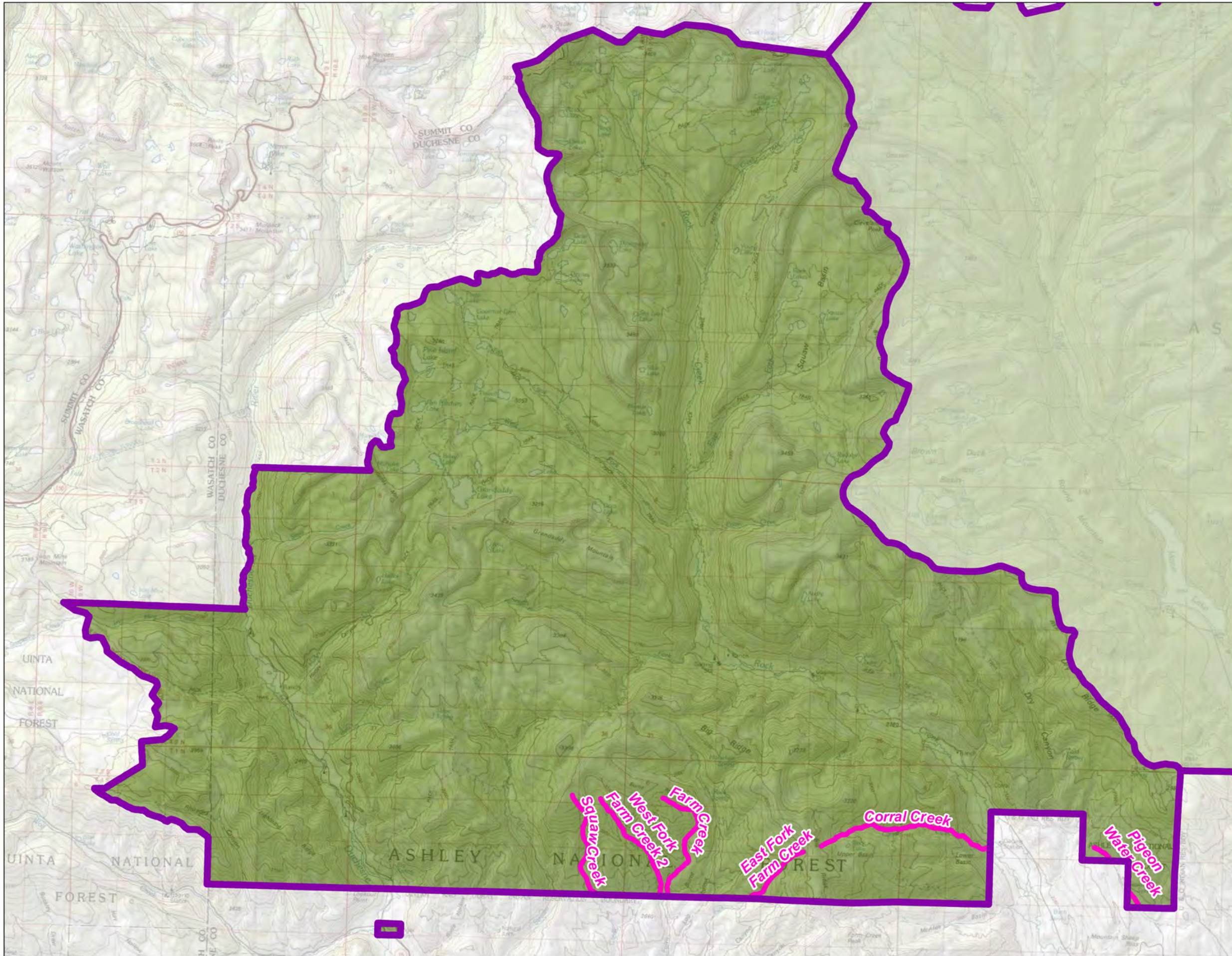
Source: Forest Service GIS 2017  
 March 23, 2017  
 R4WSR\_Ashley\_RangerDistricts\_V01.pdf  
 This product is reproduced from geospatial information prepared by the USDA, Forest Service. The Forest Service makes no expressed or implied warranty, including warranty of merchantability and fitness, with respect to the character, function, or capabilities of the data or their appropriateness for any user's purposes, and reserves the right to correct, update, modify, or replace this geospatial information without notification.



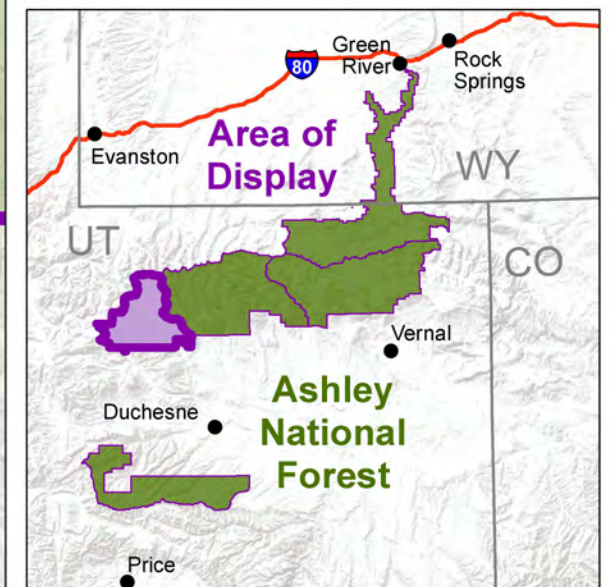


**Ashley National Forest  
Wild and Scenic River Analysis  
Duchesne Ranger District (North)  
Map 4**

-  2017 inventory- free flowing
-  Ranger District boundary
-  Ashley National Forest






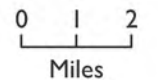
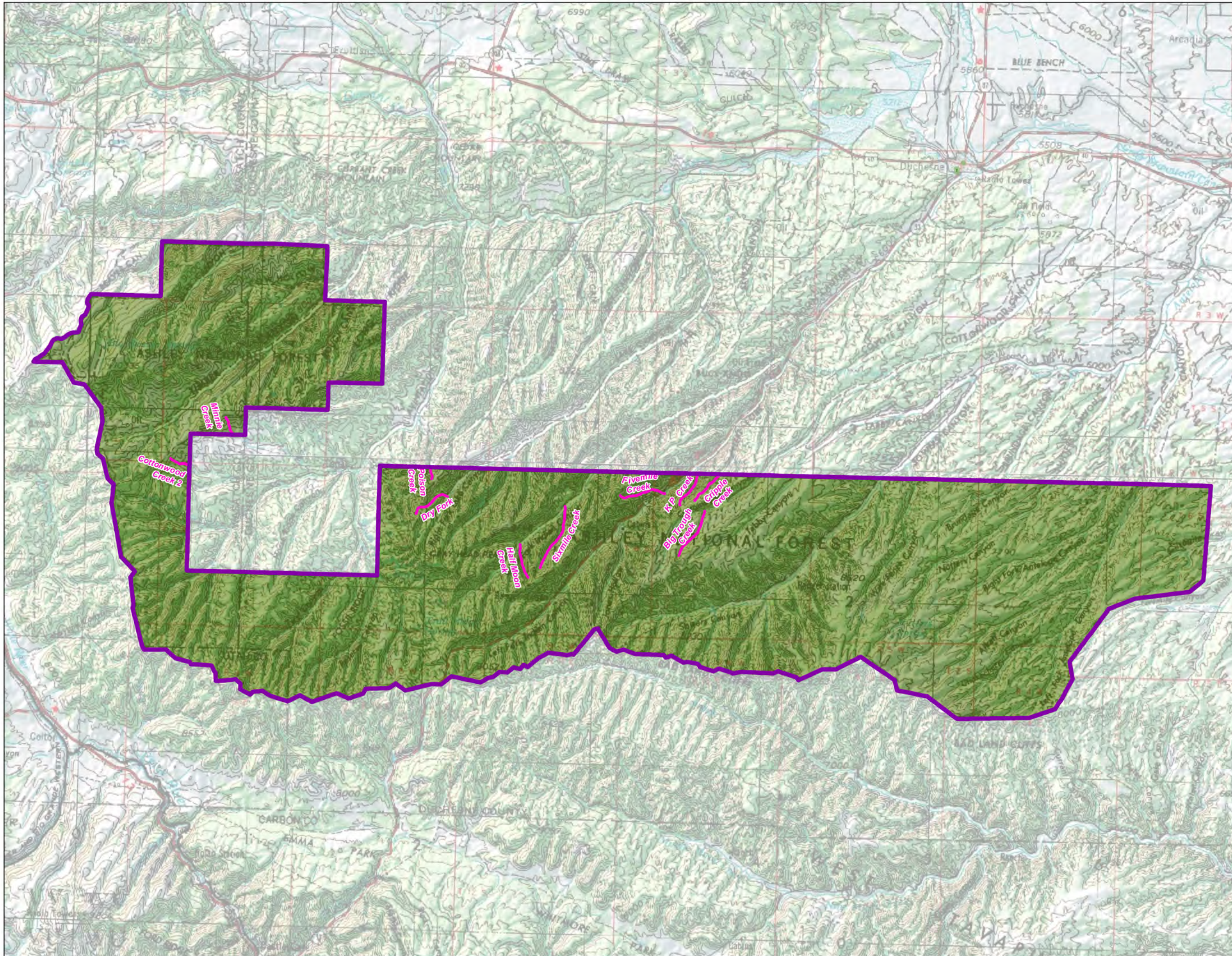
Source: Forest Service GIS 2017  
March 23, 2017  
R4WSR\_Ashley\_RangerDistricts\_V01.pdf  
This product is reproduced from geospatial information prepared by the USDA, Forest Service. The Forest Service makes no expressed or implied warranty, including warranty of merchantability and fitness, with respect to the character, function, or capabilities of the data or their appropriateness for any user's purposes, and reserves the right to correct, update, modify, or replace this geospatial information without notification.





# Ashley National Forest Wild and Scenic River Analysis Duchesne Ranger District (South) Map 5

-  2017 inventory- free flowing
-  Ranger District boundary
-  Ashley National Forest



Source: Forest Service GIS 2017  
 March 23, 2017  
 R4WSR\_Ashley\_RangerDistricts\_V01.pdf  
 This product is reproduced from geospatial information prepared by the USDA, Forest Service. The Forest Service makes no expressed or implied warranty, including warranty of merchantability and fitness, with respect to the character, function, or capabilities of the data or their appropriateness for any user's purposes, and reserves the right to correct, update, modify, or replace this geospatial information without notification.

