

ORDER

OCCUPANCY AND USE RESTRICTIONS  
WHITE RIVER NATIONAL FOREST  
SOPRIS RANGER DISTRICT

Pursuant to 36 CFR Sec. 261.50(a) and (b), the following acts are prohibited within the boundaries of the Sopris Ranger District, White River National Forest, until further notice.


1. Possessing or transporting any animal, except for guide dogs accompanying a blind person, within the Freeman Mesa Day Use Area as specified on the attached map, 36 CFR 261.58(s).
2. Possessing or transporting a dog, except for guide dogs accompanying a blind person, within the Avalanche Creek drainage from the National Forest boundary to the Avalanche Creek Campground from November 15 until May 1, annually, as specified on the attached map, 36 CFR 261.59(s).
3. Possessing dogs, except for working stock dogs, or dogs used for legal hunting purposes, on the Thomas Lake Trail, #1958; and Avalanche Lake Trail, #1959, unless under physical restraint of a leash not to exceed six (6) feet in length, 36 CFR 261.58(s).
4. Camping for more than 14 days in any consecutive 30 day period inclusive anywhere within the Sopris Ranger District, 36 CFR 261.58(a).
5. Camping in the locations specified on the attached maps except in developed campgrounds and designated camping locations, 36 CFR 261.58(e).
6. Building, maintaining, attending, or using a fire outside of a metal firering, stove, grill, or fireplace provided by the Forest Service, (except self-contained personal stoves) in the areas specified on the attached maps, 36 CFR 261.52(a).

The following persons are exempt from the prohibition contained in this order, 36 CFR 261.50(e):

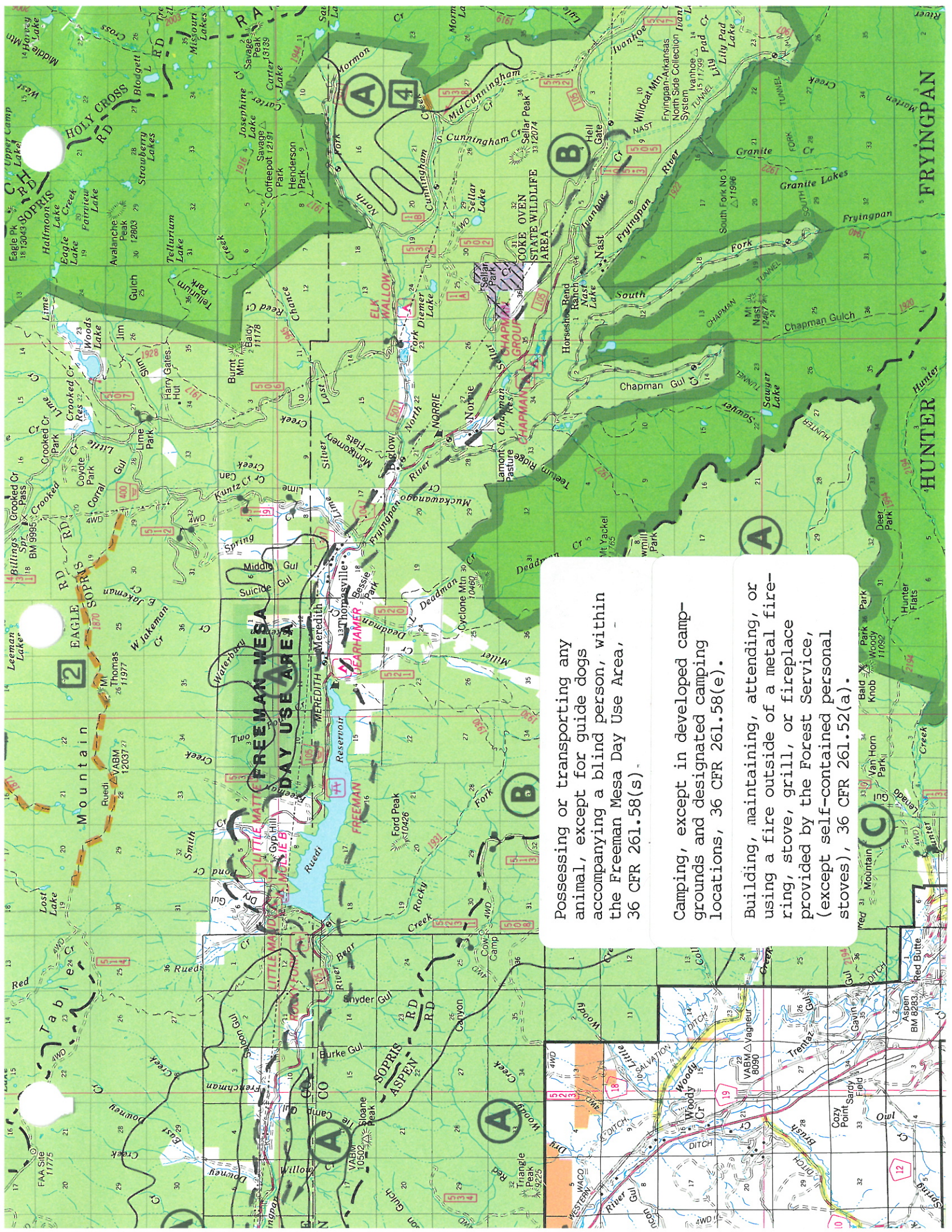
1. Persons with a permit specifically authorizing the otherwise prohibited act or omission.

2. Any federal, state, or local officer, or member of an organized rescue or fire fighting force in the performance on an official duty.

DONE at Glenwood Springs, Colorado this 23rd day of June, 1993.

  
\_\_\_\_\_  
VETO J. LASALLE  
Forest Supervisor

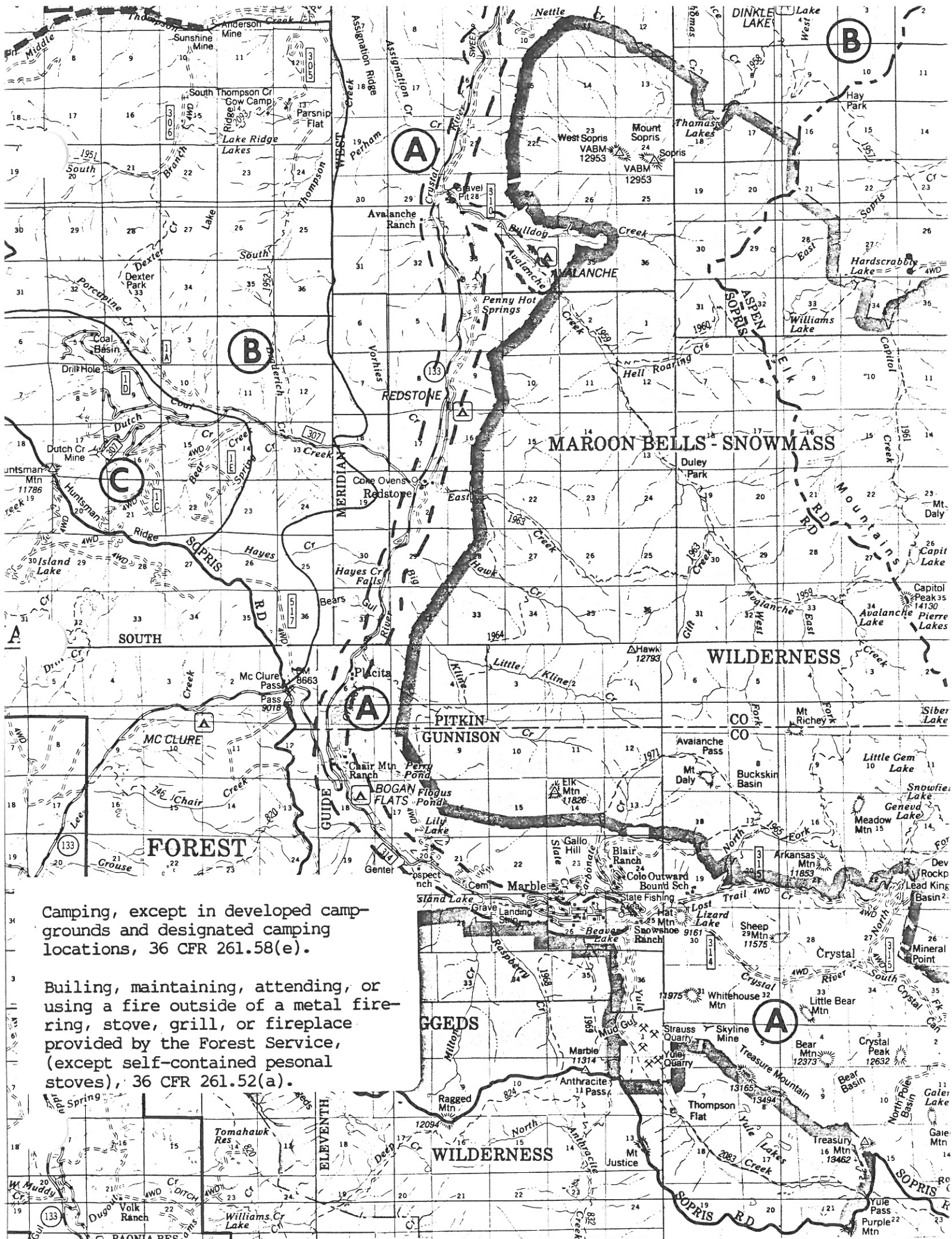
Violations of these prohibitions are punishable by a fine of not more than \$5000 or imprisonment for not more than six (6) months or both. *16 USC 551*



Possessing or transporting any animal, except for guide dogs accompanying a blind person, within the Freeman Mesa Day Use Area, 36 CFR 261.58(s)

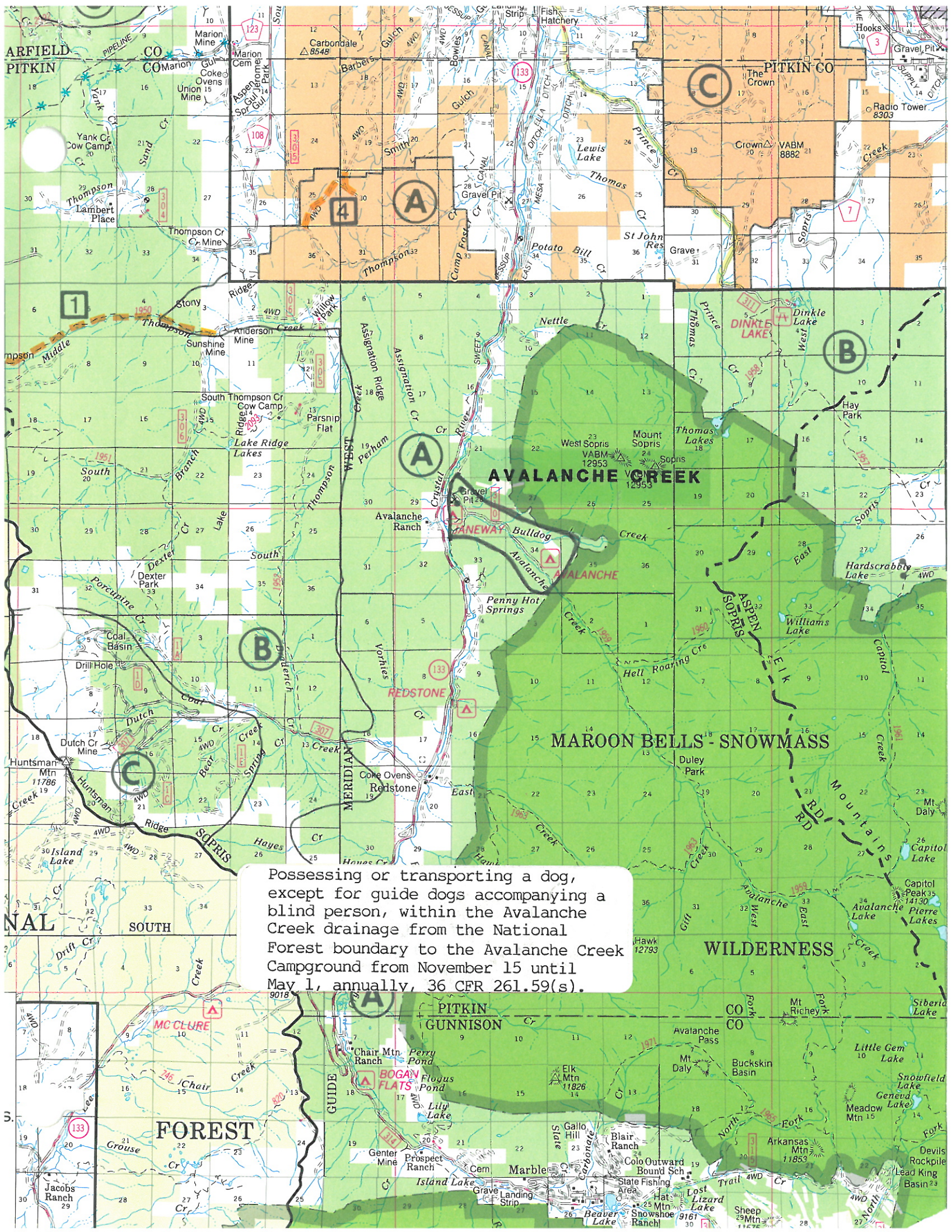
Camping, except in developed campgrounds and designated camping locations, 36 CFR 261.58(e).

Building, maintaining, attending, or using a fire outside of a metal fire-ring, stove, grill, or fireplace provided by the Forest Service, (except self-contained personal stoves), 36 CFR 261.52(a).



Camping, except in developed campgrounds and designated camping locations, 36 CFR 261.58(e).

Building, maintaining, attending, or using a fire outside of a metal firing, stove, grill, or fireplace provided by the Forest Service, (except self-contained personal stoves), 36 CFR 261.52(a).



Possessing or transporting a dog, except for guide dogs accompanying a blind person, within the Avalanche Creek drainage from the National Forest boundary to the Avalanche Creek Campground from November 15 until May 1, annually, 36 CFR 261.59(s).