

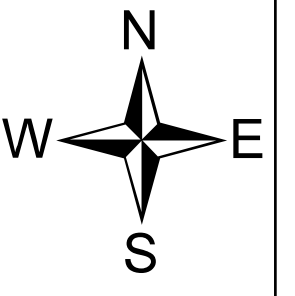
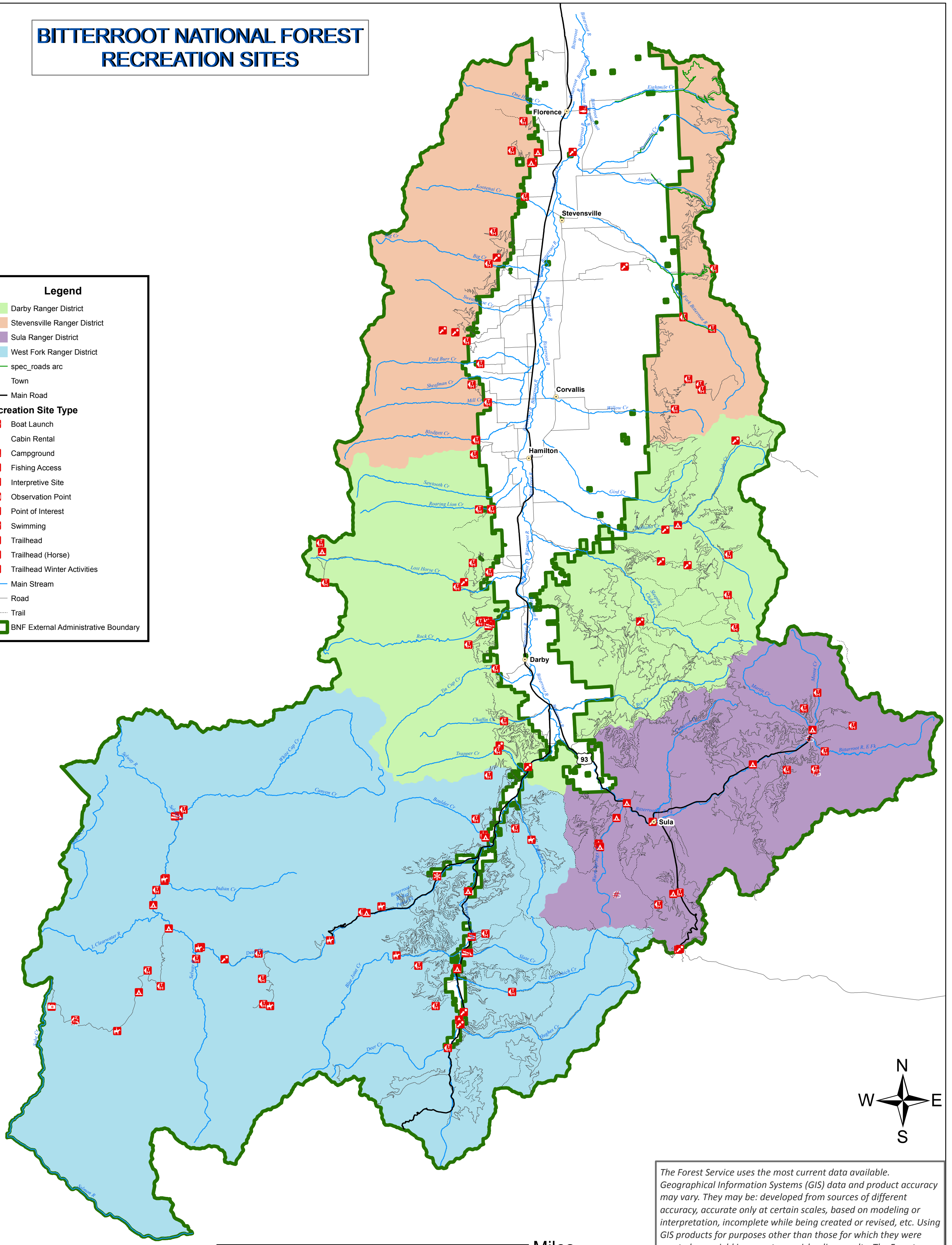
BITTERROOT NATIONAL FOREST RECREATION SITES

Legend

- Darby Ranger District
- Stevensville Ranger District
- Sula Ranger District
- West Fork Ranger District
- spec_roads arc
- Town
- Main Road

Recreation Site Type

- Boat Launch
- Cabin Rental
- Campground
- Fishing Access
- Interpretive Site
- Observation Point
- Point of Interest
- Swimming
- Trailhead
- Trailhead (Horse)
- Trailhead Winter Activities
- Main Stream
- Road
- Trail
- BNF External Administrative Boundary



The Forest Service uses the most current data available. Geographical Information Systems (GIS) data and product accuracy may vary. They may be: developed from sources of different accuracy, accurate only at certain scales, based on modeling or interpretation, incomplete while being created or revised, etc. Using GIS products for purposes other than those for which they were created may yield inaccurate or misleading results. The Forest Service reserves the right to add, correct, update, modify, or replace GIS products without notification.

Date: 9/22/2016

1:300,000

