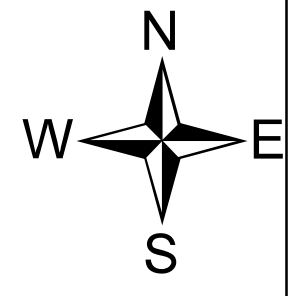
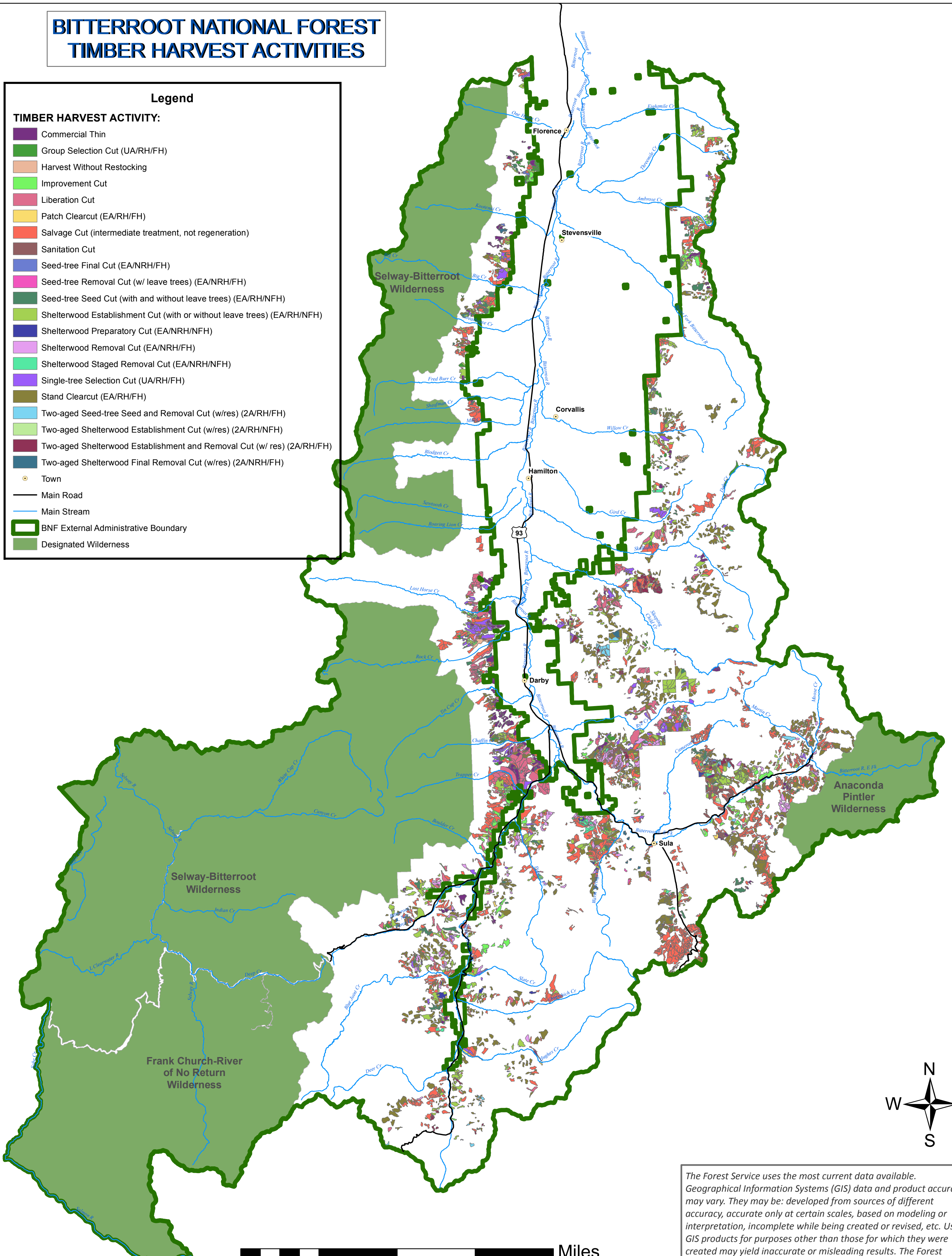


BITTERROOT NATIONAL FOREST TIMBER HARVEST ACTIVITIES

Legend

TIMBER HARVEST ACTIVITY:

- Commercial Thin
- Group Selection Cut (UA/RH/FH)
- Harvest Without Restocking
- Improvement Cut
- Liberation Cut
- Patch Clearcut (EA/RH/FH)
- Salvage Cut (intermediate treatment, not regeneration)
- Sanitation Cut
- Seed-tree Final Cut (EA/NRH/FH)
- Seed-tree Removal Cut (w/ leave trees) (EA/NRH/FH)
- Seed-tree Seed Cut (with and without leave trees) (EA/RH/NFH)
- Shelterwood Establishment Cut (with or without leave trees) (EA/RH/NFH)
- Shelterwood Preparatory Cut (EA/NRH/NFH)
- Shelterwood Removal Cut (EA/NRH/FH)
- Shelterwood Staged Removal Cut (EA/NRH/NFH)
- Single-tree Selection Cut (UA/RH/FH)
- Stand Clearcut (EA/RH/FH)
- Two-aged Seed-tree Seed and Removal Cut (w/res) (2A/RH/FH)
- Two-aged Shelterwood Establishment Cut (w/res) (2A/RH/NFH)
- Two-aged Shelterwood Establishment and Removal Cut (w/ res) (2A/RH/FH)
- Two-aged Shelterwood Final Removal Cut (w/res) (2A/NRH/FH)
- Town
- Main Road
- Main Stream
- BNF External Administrative Boundary
- Designated Wilderness



The Forest Service uses the most current data available. Geographical Information Systems (GIS) data and product accuracy may vary. They may be: developed from sources of different accuracy, accurate only at certain scales, based on modeling or interpretation, incomplete while being created or revised, etc. Using GIS products for purposes other than those for which they were created may yield inaccurate or misleading results. The Forest Service reserves the right to add, correct, update, modify, or replace GIS products without notification.