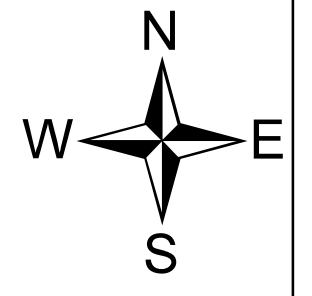
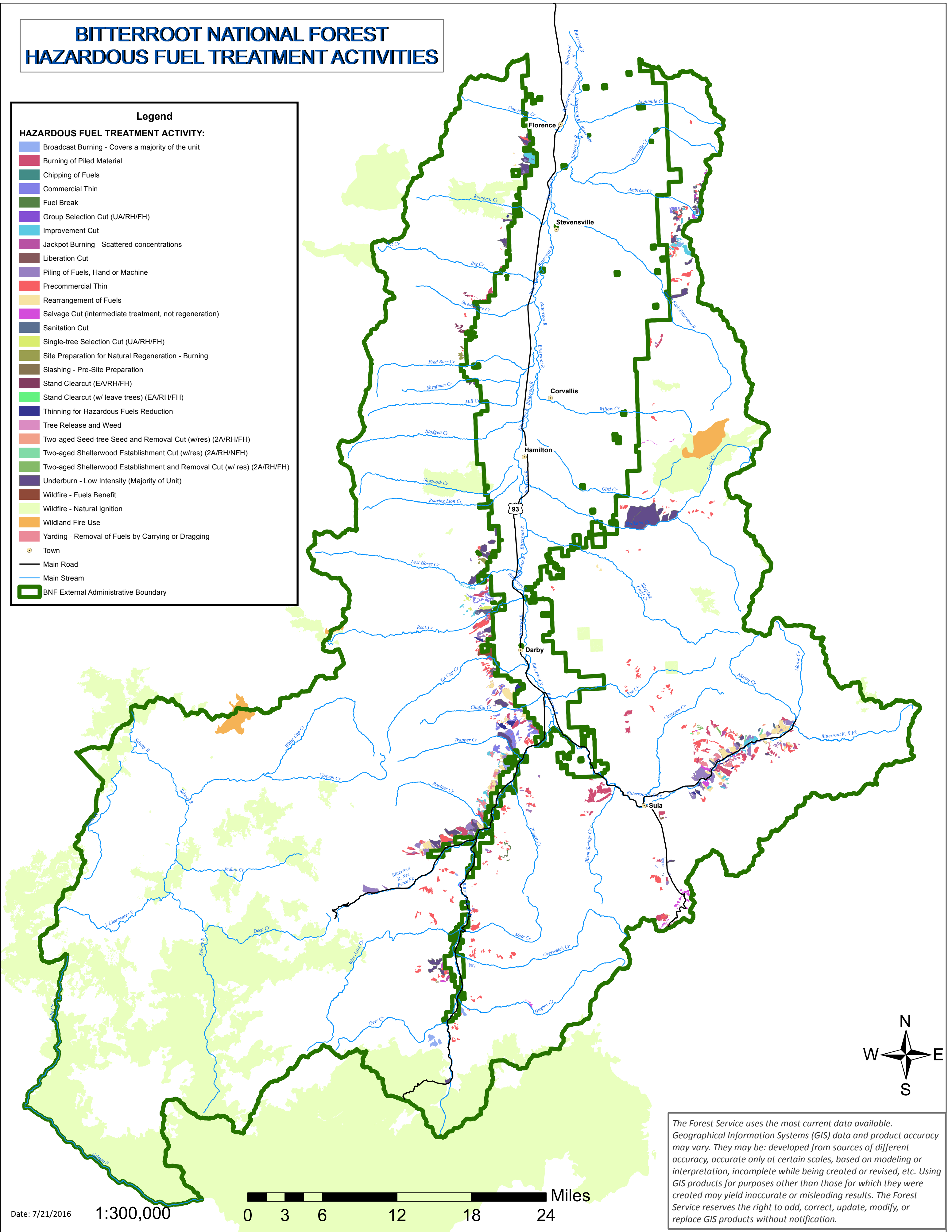


# BITTERROOT NATIONAL FOREST HAZARDOUS FUEL TREATMENT ACTIVITIES

**Legend**

**HAZARDOUS FUEL TREATMENT ACTIVITY:**

- Broadcast Burning - Covers a majority of the unit
- Burning of Piled Material
- Chipping of Fuels
- Commercial Thin
- Fuel Break
- Group Selection Cut (UA/RH/FH)
- Improvement Cut
- Jackpot Burning - Scattered concentrations
- Liberation Cut
- Piling of Fuels, Hand or Machine
- Precommercial Thin
- Rearrangement of Fuels
- Salvage Cut (intermediate treatment, not regeneration)
- Sanitation Cut
- Single-tree Selection Cut (UA/RH/FH)
- Site Preparation for Natural Regeneration - Burning
- Slashing - Pre-Site Preparation
- Stand Clearcut (EA/RH/FH)
- Stand Clearcut (w/ leave trees) (EA/RH/FH)
- Thinning for Hazardous Fuels Reduction
- Tree Release and Weed
- Two-aged Seed-tree Seed and Removal Cut (w/res) (2A/RH/FH)
- Two-aged Shelterwood Establishment Cut (w/res) (2A/RH/NFH)
- Two-aged Shelterwood Establishment and Removal Cut (w/ res) (2A/RH/FH)
- Underburn - Low Intensity (Majority of Unit)
- Wildfire - Fuels Benefit
- Wildfire - Natural Ignition
- Wildland Fire Use
- Yarding - Removal of Fuels by Carrying or Dragging
- Town
- Main Road
- Main Stream
- BNF External Administrative Boundary



The Forest Service uses the most current data available. Geographical Information Systems (GIS) data and product accuracy may vary. They may be: developed from sources of different accuracy, accurate only at certain scales, based on modeling or interpretation, incomplete while being created or revised, etc. Using GIS products for purposes other than those for which they were created may yield inaccurate or misleading results. The Forest Service reserves the right to add, correct, update, modify, or replace GIS products without notification.

Date: 7/21/2016

1:300,000

