

**UNITED STATES DEPARTMENT OF AGRICULTURE
FOREST SERVICE
NATIONAL FORESTS IN NORTH CAROLINA
PISGAH NATIONAL FOREST
Appalachian Ranger District**

Order Number 08-11-08-17-01

Emergency Road Closure

Pursuant to 36 CFR 261.50 (a) and (b) for the protection of public health and safety, the following acts are prohibited on the Appalachian Ranger District, Pisgah National Forest specifically Forest Roads 467 and 113 as show on the attached map. This order will be in effect until May 19, 2017 or until rescinded by the Forest Supervisor.

1. **Operating, leaving, possessing, parking a motor vehicle on any road closed by a sign, gate, barricade, earthen barricade. 36 CFR 261.54 (e)**
2. **Being on a road that is closed using non-motorized or wheeled conveyance (bicycle). 36 CFR 261.54 (a)**
3. **Being in the area of closure by pedestrian, horseback and/or bike. 36 CFR 261.53 (e)**

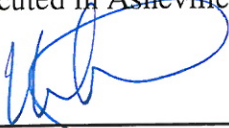
Road(s)

**FS 467 Hurricane Gap Road
FS 113 Mill Ridge Road**

Pursuant to 36 CFR, Section 261.50 (e), the following persons or areas are exempt from this Order:

1. Persons with a special use permit specifically authorizing the otherwise prohibited act or omission, issued by the District Ranger in consultation with Experimental Forest Project Leader.
2. Any Federal, State, or local officer, or member of an organized rescue or firefighting force in the performance of an official duty.

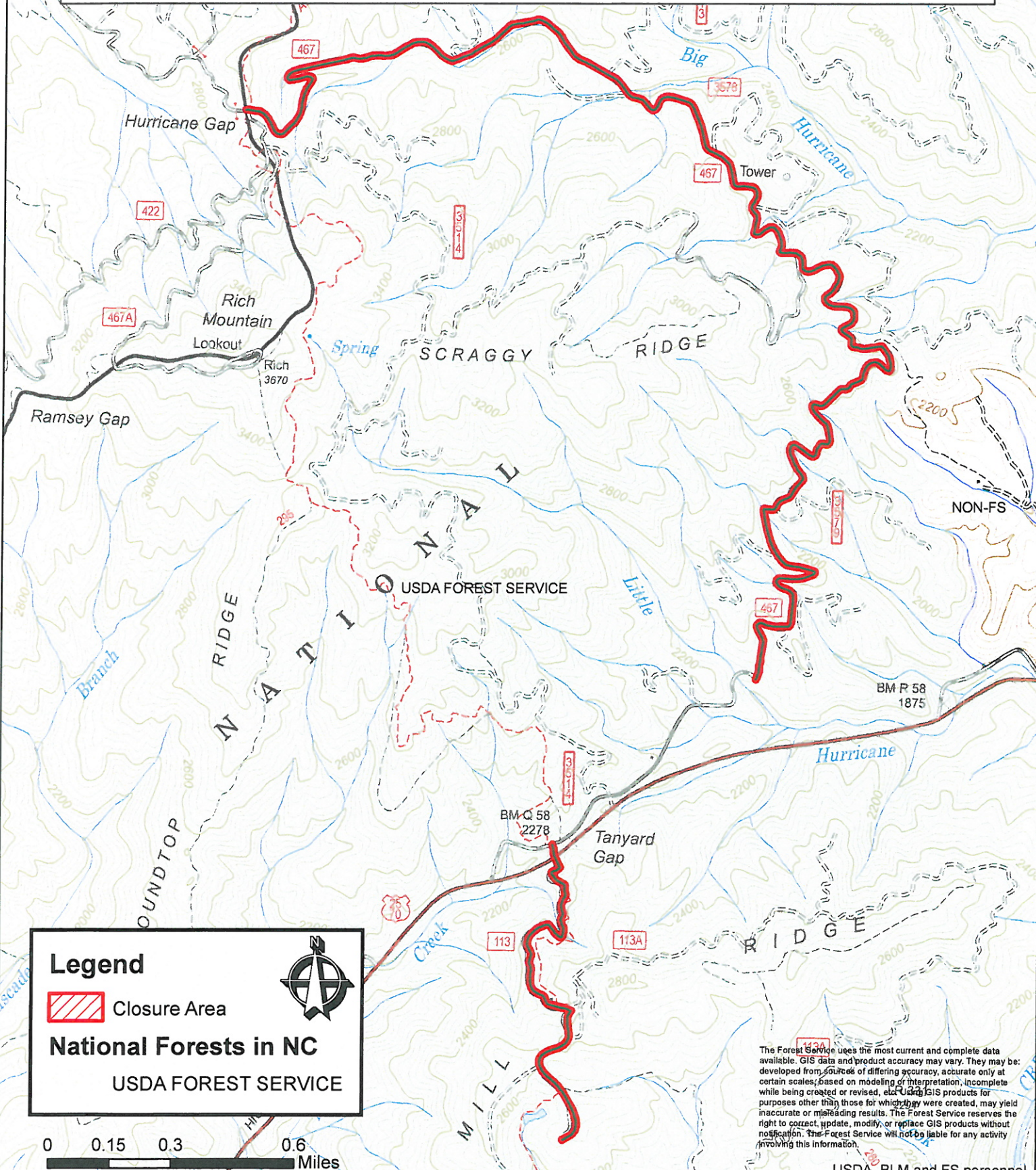
Executed in Asheville, North Carolina, on this 19 day of January, 2017




HURSTON A. NICHOLAS
Forest Supervisor
National Forests in North Carolina

Violation of these prohibitions set forth above is punishable by a fine of not more than \$5,000 for an individual and \$10,000 for an organization, or imprisonment for not more than six (6) months, or both. See 16 U.S.C. 551, 18 U.S.C. 3559 and 3571.

Mill Ridge and Rich Mountain Closure Areas FSRD113 and FSRD467

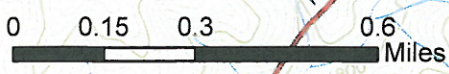


Legend

 Closure Area

National Forests in NC

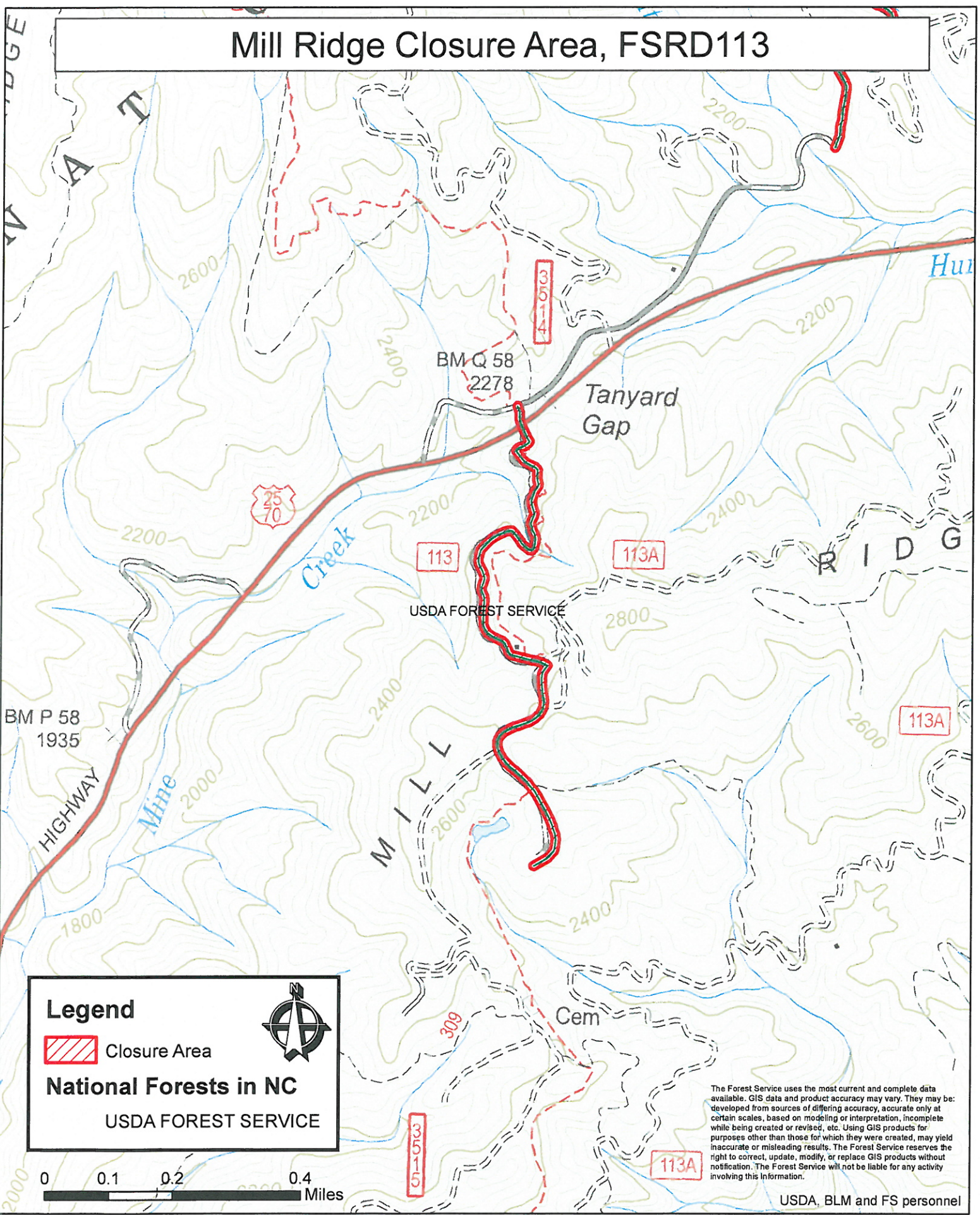
USDA FOREST SERVICE



The Forest Service uses the most current and complete data available. GIS data and product accuracy may vary. They may be developed from sources of differing accuracy, accurate only at certain scales, based on modeling or interpretation, incomplete while being created or revised, etc. Using GIS products for purposes other than those for which they were created, may yield inaccurate or misleading results. The Forest Service reserves the right to correct, update, modify, or replace GIS products without notification. The Forest Service will not be liable for any activity involving this information.

USDA, BLM and FS personnel

Mill Ridge Closure Area, FSRD113



Legend

 Closure Area

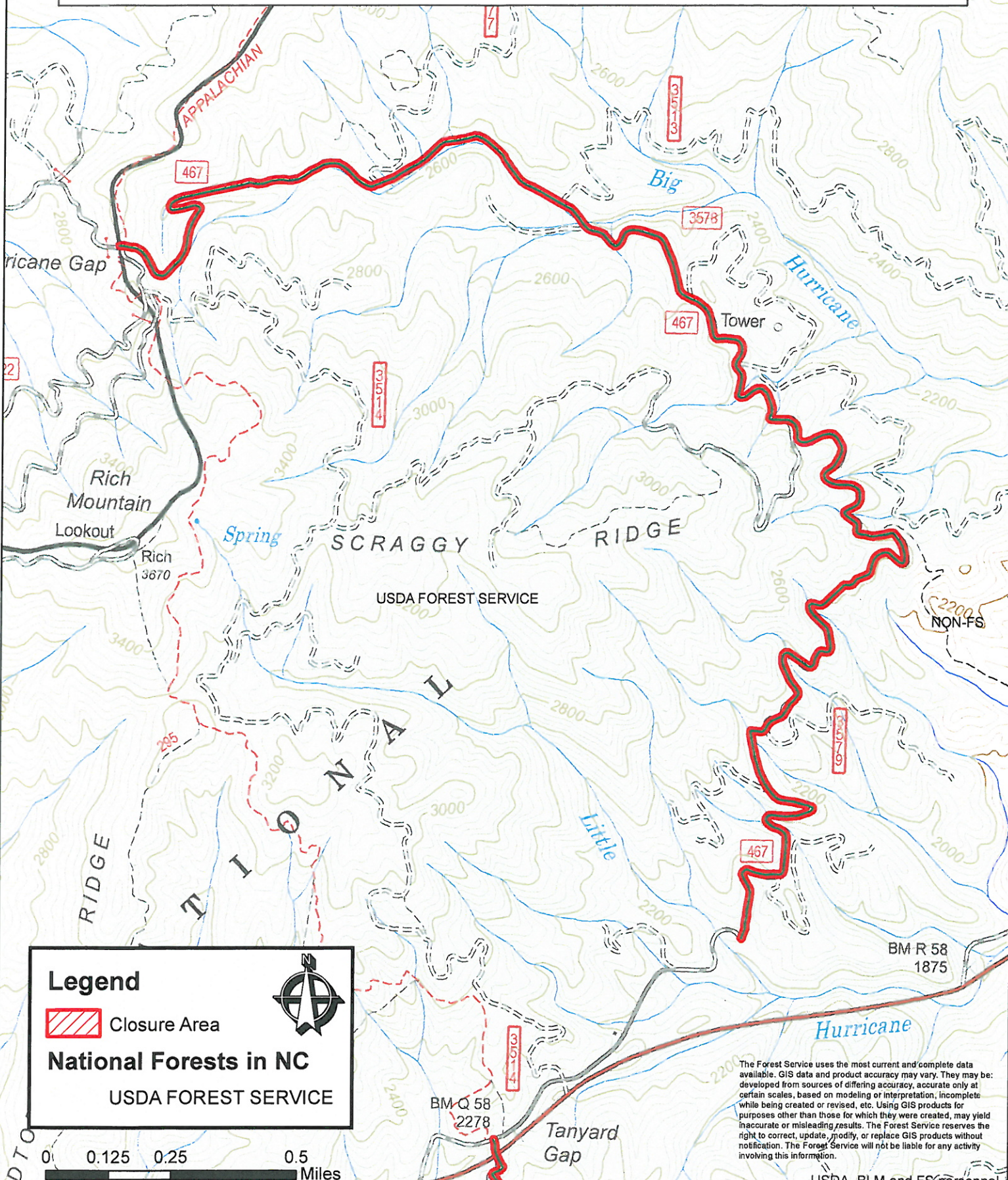
National Forests in NC

USDA FOREST SERVICE



The Forest Service uses the most current and complete data available. GIS data and product accuracy may vary. They may be developed from sources of differing accuracy, accurate only at certain scales, based on modeling or interpretation, incomplete while being created or revised, etc. Using GIS products for purposes other than those for which they were created, may yield inaccurate or misleading results. The Forest Service reserves the right to correct, update, modify, or replace GIS products without notification. The Forest Service will not be liable for any activity involving this information.

Rich Mountain Closure Area, FSRD467



Legend

 Closure Area

National Forests in NC

USDA FOREST SERVICE



The Forest Service uses the most current and complete data available. GIS data and product accuracy may vary. They may be developed from sources of differing accuracy, accurate only at certain scales, based on modeling or interpretation, incomplete while being created or revised, etc. Using GIS products for purposes other than those for which they were created, may yield inaccurate or misleading results. The Forest Service reserves the right to correct, update, modify, or replace GIS products without notification. The Forest Service will not be liable for any activity involving this information.