



ORDER NO. R9-05-17-39

**TEMPORARY CLOSURE ORDER OF THE FOREST SUPERVISOR  
RESTRICTING PUBLIC USE OF  
The Eleven Point Ranger District  
TO WIT:**

**MARK TWAIN NATIONAL FOREST- MISSOURI**

This Temporary Closure Order is valid under Authority of the Act of Congress of June 4, 1897, as amended, (16 U.S.C. 551) and pursuant to the Secretary of Agriculture’s Regulations set forth at 36 CFR Part 261, Subpart B (36 CFR 261.50(a) and (b)). These restrictions are in addition to those enumerated in Code of Federal Regulations Title 36, Part 261, Subpart A, and become effective when signed and will remain in effect until rescinded.

The Mark Twain National Forest has implemented a temporary closure of two areas (approximately 600 acres) on the Eleven Point Ranger District on Monday, January 16, 2017, through Tuesday, January 17, 2017. The Ozark National Scenic Riverways in cooperation with the Missouri Department of Conservation and the US Department of Agriculture’s (USDA) Animal and Plant Health Inspection Service (APHIS) plan to conduct feral hog eradication activities primarily on Ozark National Scenic Riverways. However, two parcels of National Forest System Lands are within the eradication boundary and will be posted as closed to all public use during this timeframe to protect public health and safety in the area.

**TWO AREAS ON THE ELEVEN POINT RANGER DISTRICT ARE CLOSED TO THE PUBLIC FROM 7:00AM JANUARY 16, 2017 TO 5:30PM JANUARY 17, 2017 AS DESCRIBED BELOW AND ARE NECESSARY FOR PUBLIC HEALTH AND SAFETY (36 CFR 261.53 d & e and 36 CFR 261.54 a & e).**

**All NFS Lands within these legal descriptions are temporarily closed to the public:**

**T 26 N, R 1 W, Section 12.      T 25 N, R 1 E, Sections 3 E and 10 E.**

**All Forest Service Roads accessing the above NFS Lands are temporarily closed to the public:  
FR 3250 and County Road F-227 in Carter County.**

**All Forest Service Trails within the above NFS Lands are temporarily closed to the public:  
Ozark Trail—Big Springs Connector Trail #266106-1.**

**Violation of these prohibitions is punishable by a fine of not more than \$5000.00 for an individual or \$10,000.00 for an organization, or imprisonment for not more than six (6) months, or both (16 U.S.C., 18 U.S.C. 3559 and 3571).**

Dated this 12 day of January, 2017, at Rolla, Missouri.

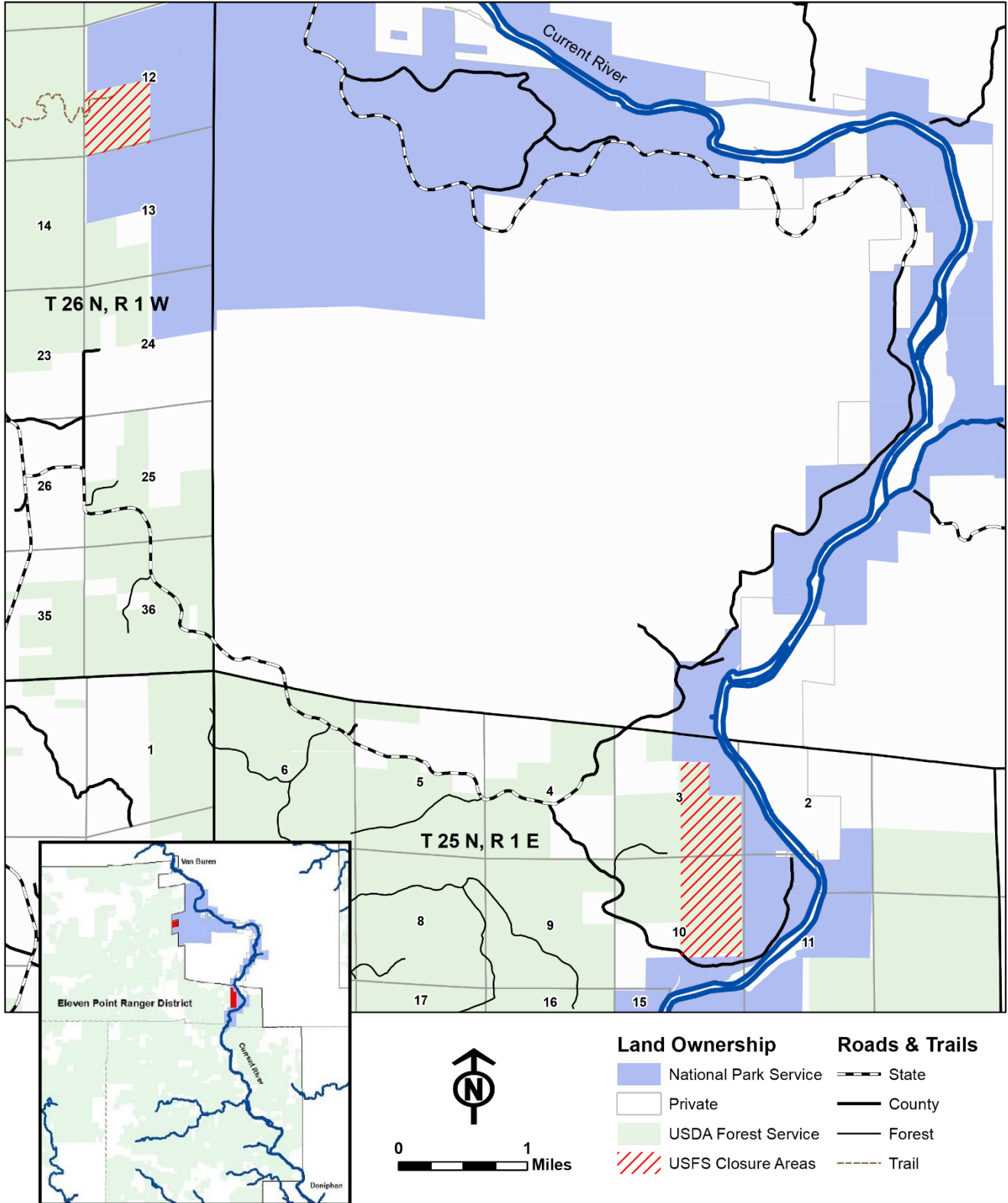
United States Department of Agriculture  
Forest Service

**SHERRI K. SCHWENKE**  
Forest Supervisor



ORDER NO. R9-05-17-39

### Temporary Closure Area—Eleven Point Ranger District



#### Land Ownership

- National Park Service
- Private
- USDA Forest Service
- USFS Closure Areas

#### Roads & Trails

- State
- County
- Forest
- Trail