



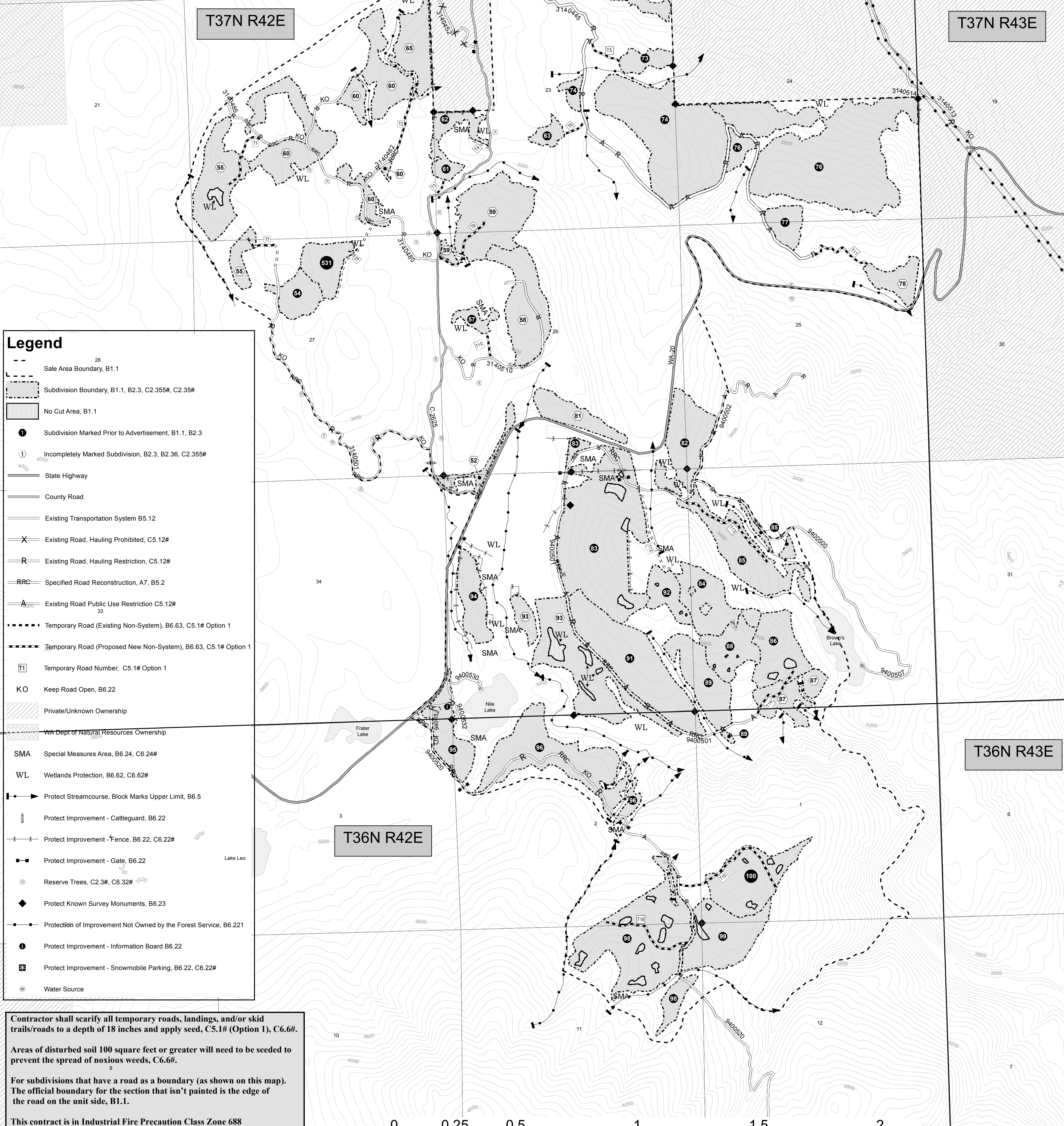
# Renshaw DxP Timber Sale Area Map

## Sullivan Lake Ranger District, Colville National Forest

| Subdivision | Acres | Cutting Designation | Harvest Method |
|-------------|-------|---------------------|----------------|
| 52          | 9     | DxSPP with LTM      | CTL            |
| 54          | 18    | LTM                 | Tractor/CTL    |
| 55          | 49    | DxPre               | Tractor/CTL    |
| 57          | 6     | LTM                 | Tractor/CTL    |
| 58          | 43    | DxPre               | Tractor/CTL    |
| 59          | 55    | DxPre               | Tractor/CTL    |
| 60          | 90    | DxPre               | Tractor/CTL    |
| 61          | 7     | LTM                 | Tractor - LTA  |
| 62          | 10    | LTM                 | Tractor - LTA  |
| 63          | 6     | LTM                 | Tractor/CTL    |
| 65          | 29    | DxPre               | Tractor/CTL    |
| 66          | 23    | DxPre               | Tractor/CTL    |
| 70          | 50    | LTM                 | Tractor/CTL    |
| 73          | 10    | LTM                 | Tractor/CTL    |
| 74          | 108   | LTM                 | Tractor/CTL    |
| 76          | 158   | LTM                 | Tractor/CTL    |
| 77          | 13    | LTM                 | Tractor/CTL    |
| 78          | 15    | DxSPP with LTM      | Tractor/CTL    |
| 80          | 23    | DxPre               | Tractor - LTA  |

| Subdivision | Acres | Cutting Designation | Harvest Method |
|-------------|-------|---------------------|----------------|
| 81          | 19    | DxSPP with LTM      | Tractor/CTL    |
| 82          | 37    | LTM                 | Tractor/CTL    |
| 83          | 117   | LTM                 | Tractor/CTL    |
| 84          | 32    | LTM                 | Tractor/CTL    |
| 85          | 50    | LTM                 | Tractor/CTL    |
| 86          | 31    | LTM                 | Tractor - LTA  |
| 87          | 22    | DxPre               | Tractor/CTL    |
| 88          | 24    | LTM                 | Tractor/CTL    |
| 89          | 33    | LTM                 | Tractor/CTL    |
| 91          | 74    | LTM                 | Tractor - LTA  |
| 92          | 15    | LTM                 | Tractor/CTL    |
| 93          | 65    | DxPre with LTM      | Tractor - LTA  |
| 94          | 21    | LTM                 | Tractor - LTA  |
| 95          | 26    | LTM                 | Tractor - LTA  |
| 96          | 69    | LTM                 | Tractor - LTA  |
| 98          | 93    | LTM                 | Tractor - LTA  |
| 99          | 42    | LTM                 | Tractor - LTA  |
| 100         | 43    | LTM                 | Tractor - LTA  |
| 531         | 21    | LTM                 | Tractor/CTL    |

Cut-To-Length Felling Specified (CTL), C6.41#  
 Leave Tree Mark (LTM), B2.35, C2.35# (Option 1).  
 Individual Tree Mark (ITM), C2.35#  
 Designation by Prescription (DxPre), C2.355#  
 Designation by Species and Diameter (DxSPP), C2.352#  
 Tractor Yarding Specified, B6.42, C6.42#  
 Forwarder Yarding Specified, B6.42, C6.42#  
 Leave Tops Attached (LTA) C6.42#



### Legend

- Sale Area Boundary, B1.1
- Subdivision Boundary, B1.1, B2.3, C2.355#, C2.35#
- No Cut Area, B1.1
- Subdivision Marked Prior to Advertisement, B1.1, B2.3
- Incompletely Marked Subdivision, B2.3, B2.36, C2.355#
- State Highway
- County Road
- Existing Transportation System B5.12
- Existing Road, Hauling Prohibited, C5.12#
- Existing Road, Hauling Restriction, C5.12#
- Specified Road Reconstruction, A7, B5.2
- Existing Road Public Use Restriction C5.12#
- Temporary Road (Existing Non-System), B6.63, C5.1# Option 1
- Temporary Road (Proposed New Non-System), B6.63, C5.1# Option 1
- Temporary Road Number, C5.1# Option 1
- Keep Road Open, B6.22
- Private/Unknown Ownership
- WA Dept of Natural Resources Ownership
- SMA Special Measures Area, B6.24, C6.24#
- WL Wetlands Protection, B6.62, C6.62#
- Protect Streamcourse, Block Marks Upper Limit, B6.5
- Protect Improvement - Cattleguard, B6.22
- Protect Improvement - Fence, B6.22, C6.22#
- Protect Improvement - Gate, B6.22
- Reserve Trees, C2.3#, C6.32#
- Protect Known Survey Monuments, B6.23
- Protection of Improvement Not Owned by the Forest Service, B6.221
- Protect Improvement - Information Board B6.22
- Protect Improvement - Snowmobile Parking, B6.22, C6.22#
- Water Source

Contractor shall scarify all temporary roads, landings, and/or skid trails/roads to a depth of 18 inches and apply seed, C5.1# (Option 1), C6.6#.

Areas of disturbed soil 100 square feet or greater will need to be seeded to prevent the spread of noxious weeds, C6.6#.

For subdivisions that have a road as a boundary (as shown on this map). The official boundary for the section that isn't painted is the edge of the road on the unit side, B1.1.

This contract is in Industrial Fire Precaution Class Zone 688

