

Helena - Lewis & Clark National Forest

Recreation Fee Program Accomplishment Highlights 2015

Forest Service



Keep History Alive, Rent a Cabin



The Forests recently replaced decaying sill logs on Rilway cabin.

The Helena – Lewis & Clark National Forest has eight cabins that visitors can rent to have a rustic, yet comfortable experience in very remote areas. Renting these cabins helps retain the history of the Forest by keeping them on the landscape. Without rental and use, these cabins would almost certainly be in a state of slow decay and would eventually need to be removed as they would serve no purpose to the Forest or visitors.

Recreation Fee Dollars

Recreation fee dollars are an investment in outdoor recreation. They support and enhance:

- Public safety
- Recreation site maintenance and improvements
- Educational experiences
- Informational wayside exhibits
- Youth programs and partnerships
- Interpretive programs

Current and future generations will benefit as 80-95% of the funds are reinvested in the facilities and services that visitors enjoy, use, and value.

Trails Receive Upkeep

Recreation fee funds collected from outfitter and guide fees enabled about 40 miles of trail maintenance on the Helena District. This work included removing brush and downed logs, and repairing tread and water drainage. This work helps ensure trails remain open and minimizes erosion.



A representation of the type of trail work accomplished.

Forest Revenue & Expenditures

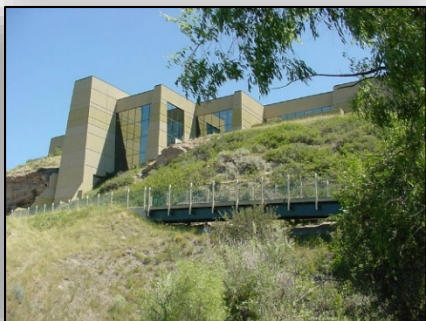
Revenue*	Amount
Recreation Fees	\$287,209
Special Uses	\$148,536
Interagency Passes	\$49,039
Total	\$484,784
Expenditures	Amount
Repair & Maintenance	\$174,097
Visitor Services	\$142,836
Law Enforcement	\$17,297
Habitat Restoration	\$0
Fee Agreements	\$0
Cost of Collections	\$55,623
Total	\$389,853

*Carryover funds will be used for large projects and the following season's startup costs.

Lewis and Clark Inspires

The interpreters and exhibits at Lewis and Clark National Historic Trail Interpretive Center inspire awe and awakens curiosity at President Thomas Jefferson's vision of expanding America to the West. They share challenges faced by the Lewis and Clark expedition as they portaged the Great Falls of the Missouri River and explored unknown lands. The programs bring the daily experiences of the expedition to life as well as help people understand the environment and native peoples.

Recreation fee funds supported about 420 interpretive programs including "short talks". These are 15-minute presentations on topics like incredible events during the Lewis and Clark expedition, the natural history of the Great Plains and Rocky Mountains, American history in the early 19th century, and Native American culture and history.



The Lewis & Clark Interpretive Center sits just downstream from the Black Eagle Falls on the Missouri River.



Contacts

Helena - Lewis & Clark
National Forest

Recreation Fee Program Contact

406-791-7700

Email: dcunningham01@fs.fed.us

Online: www.fs.usda.gov/helena or

<http://www.fs.usda.gov/lcnf/>

Regional Contact

406-329-3587

Email: jpward02@fs.fed.us

The USDA is an equal opportunity employer and provider.

Northern Region Map



Regional Revenue & Expenditures

Revenue*	Amount
Recreation Fees	\$1,958,177
Special Uses	\$1,023,281
Interagency Passes	\$90,964
Total	\$3,072,422
Expenditures	Amount
Repair & Maintenance	\$1,013,432
Visitor Services	\$789,408
Law Enforcement	\$97,983
Habitat Restoration	\$59,047
Fee Agreements	\$6,718
Cost of Collections	\$200,284
Total	\$2,166,874

*Carryover funds will be used for large projects and the following season's startup costs.