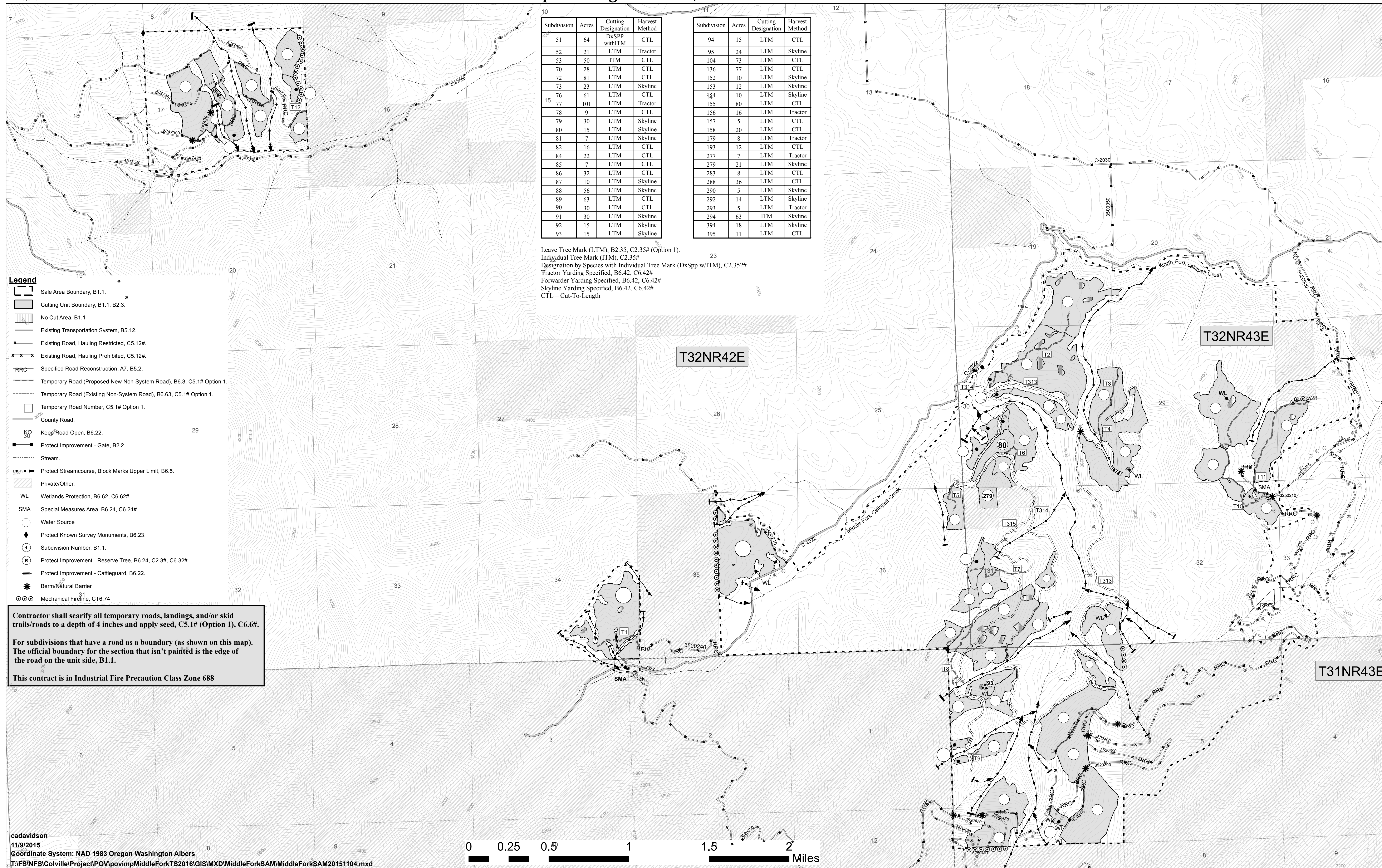


Middle Fork Timber Sale Area Map

Newport Ranger District, Colville National Forest



Subdivision	Acres	Cutting Designation	Harvest Method
51	64	DxSPP with ITM	CTL
52	21	LTM	Tractor
53	50	ITM	CTL
70	28	LTM	CTL
72	81	LTM	CTL
73	23	LTM	Skyline
76	61	LTM	CTL
77	101	LTM	Tractor
78	9	LTM	CTL
79	30	LTM	Skyline
80	15	LTM	Skyline
81	7	LTM	Skyline
82	16	LTM	CTL
84	22	LTM	CTL
85	7	LTM	CTL
86	32	LTM	CTL
87	10	LTM	Skyline
88	56	LTM	Skyline
89	63	LTM	CTL
90	30	LTM	CTL
91	30	LTM	Skyline
92	15	LTM	Skyline
93	15	LTM	Skyline

Subdivision	Acres	Cutting Designation	Harvest Method
94	15	LTM	CTL
95	24	LTM	Skyline
104	73	LTM	CTL
136	77	LTM	CTL
152	10	LTM	Skyline
153	12	LTM	Skyline
154	10	LTM	Skyline
155	80	LTM	CTL
156	16	LTM	Tractor
157	5	LTM	CTL
158	20	LTM	CTL
179	8	LTM	Tractor
193	12	LTM	CTL
277	7	LTM	Tractor
279	21	LTM	Skyline
283	8	LTM	CTL
288	36	LTM	CTL
290	5	LTM	Skyline
292	14	LTM	Skyline
293	5	LTM	Tractor
294	63	ITM	Skyline
394	18	LTM	Skyline
395	11	LTM	CTL

Leave Tree Mark (LTM), B2.35, C2.35# (Option 1).
 Individual Tree Mark (ITM), C2.35#
 Designation by Species with Individual Tree Mark (DxSpp w/ITM), C2.352#
 Tractor Yarding Specified, B6.42, C6.42#
 Forwarder Yarding Specified, B6.42, C6.42#
 Skyline Yarding Specified, B6.42, C6.42#
 CTL - Cut-To-Length

- Legend**
- Sale Area Boundary, B1.1.
 - Cutting Unit Boundary, B1.1, B2.3.
 - No Cut Area, B1.1
 - Existing Transportation System, B5.12.
 - Existing Road, Hauling Restricted, C5.12#.
 - Existing Road, Hauling Prohibited, C5.12#.
 - Specified Road Reconstruction, A7, B5.2.
 - Temporary Road (Proposed New Non-System Road), B6.3, C5.1# Option 1.
 - Temporary Road (Existing Non-System Road), B6.63, C5.1# Option 1.
 - Temporary Road Number, C5.1# Option 1.
 - County Road.
 - Keep Road Open, B6.22.
 - Protect Improvement - Gate, B2.2.
 - Stream.
 - Protect Streamcourse, Block Marks Upper Limit, B6.5.
 - Private/Other.
 - Wetlands Protection, B6.62, C6.62#.
 - Special Measures Area, B6.24, C6.24#.
 - Water Source
 - Protect Known Survey Monuments, B6.23.
 - Subdivision Number, B1.1.
 - Protect Improvement - Reserve Tree, B6.24, C2.3#, C6.32#.
 - Protect Improvement - Cattleguard, B6.22.
 - Berm/Natural Barrier
 - Mechanical Fireline, CT6.74

Contractor shall scarify all temporary roads, landings, and/or skid trails/roads to a depth of 4 inches and apply seed, C5.1# (Option 1), C6.6#.

For subdivisions that have a road as a boundary (as shown on this map). The official boundary for the section that isn't painted is the edge of the road on the unit side, B1.1.

This contract is in Industrial Fire Precaution Class Zone 688

