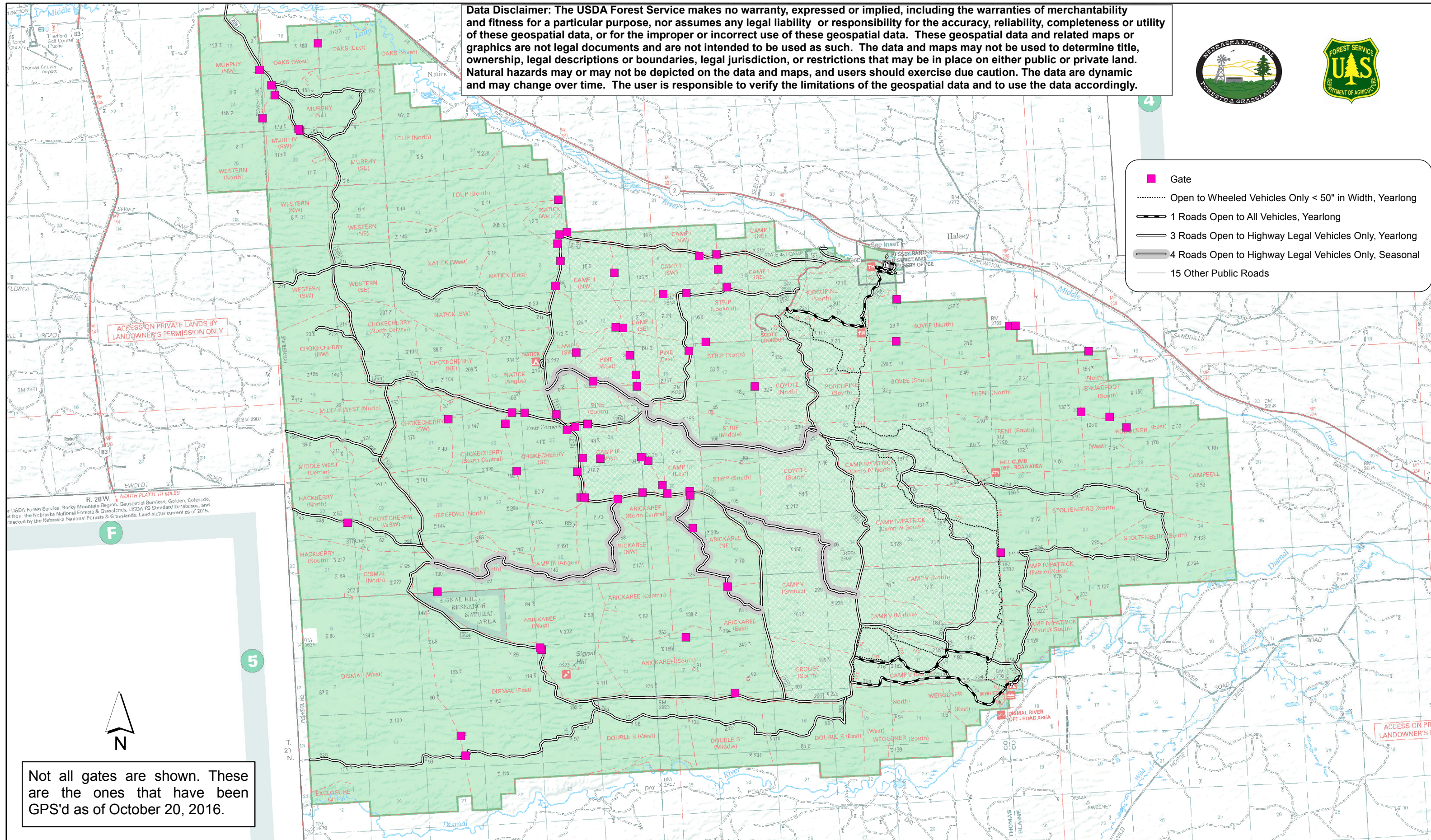


Data Disclaimer: The USDA Forest Service makes no warranty, expressed or implied, including the warranties of merchantability and fitness for a particular purpose, nor assumes any legal liability or responsibility for the accuracy, reliability, completeness or utility of these geospatial data, or for the improper or incorrect use of these geospatial data. These geospatial data and related maps or graphics are not legal documents and are not intended to be used as such. The data and maps may not be used to determine title, ownership, legal descriptions or boundaries, legal jurisdiction, or restrictions that may be in place on either public or private land. Natural hazards may or may not be depicted on the data and maps, and users should exercise due caution. The data are dynamic and may change over time. The user is responsible to verify the limitations of the geospatial data and to use the data accordingly.



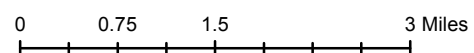
- Gate
- Open to Wheeled Vehicles Only < 50" in Width, Yearlong
- 1 Roads Open to All Vehicles, Yearlong
- 3 Roads Open to Highway Legal Vehicles Only, Yearlong
- 4 Roads Open to Highway Legal Vehicles Only, Seasonal
- 15 Other Public Roads



ACCESSION PRIVATE LANDS BY LANDOWNER'S PERMISSION ONLY

ACCESS ON PRIV LANDOWNER'S PE

Not all gates are shown. These are the ones that have been GPS'd as of October 20, 2016.



Gates on the Bessey Ranger District