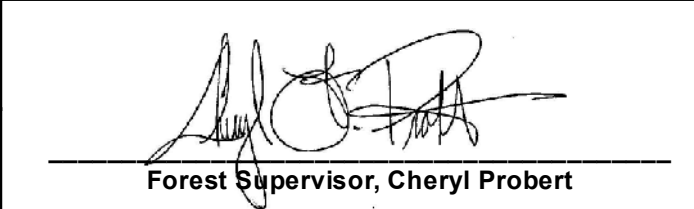


United States Department of Agriculture
Forest Service
2020
Idaho
America's Great Outdoors
Lolo Pass
District
Lochsa/Powell Ranger
National Forests
Nez Perce-Clearwater
Use Map
Motor Vehicle



PURPOSE AND CONTENTS OF THIS MAP

The designations shown on this motor vehicle use map (MVUM) were made by the responsible official pursuant to 36 CFR 212.51; are effective as of the date on the front cover of this MVUM; and will remain in effect until superseded by the next year's MVUM.



It is the responsibility of the user to acquire the current MVUM. This MVUM shows the National Forest System roads, National Forest System trails, and the areas on National Forest System lands in the Nez Perce-Clearwater National Forests that are designated for motor vehicle use pursuant to 36 CFR 212.51. This MVUM also identifies the vehicles classes allowed on each route and in each area and any seasonal restrictions that apply on those routes and in those areas.

Designation of a road, trail, or area for motor vehicle use by a particular class of vehicle under 36 CFR 212.51 should not be interpreted as encouraging or inviting use, or to imply that the road, trail, or area is passable, actively maintained, or safe for travel. Motor vehicle designations include parking along designated routes and at facilities associated with designated routes when it is safe to do so and when not causing damage to National Forest System resources. Seasonal weather conditions and natural events may render designated roads and trails impassable for extended periods. Designated areas may contain dangerous or impassable terrain. Many designated roads and trails may be passable only by high-clearance vehicles or four-wheel drive vehicles. Maintenance of designated roads and trails will depend on available resources, and many may receive little maintenance.

This motor vehicle use map identifies those roads, trails, and areas designated for the motor vehicle use under 36 CFR 212.51 for the purpose of enforcing the prohibition at 36 CFR 261.13. This is a limited purpose. The other public roads are shown for information and navigation purposes only and are not subject to designation under the Forest Service travel management regulation.

These designations apply only to National Forest System roads, National Forest System trails, and areas on National Forest System lands.

PROHIBITIONS

It is prohibited to possess or operate a motor vehicle on National Forest System lands on the Nez Perce-Clearwater National Forests other than in accordance with these designations (36 CFR 261.13).

Violators of 36 CFR 261.13 are subject to a fine of up to \$5,000 or imprisonment for up to 6 months or both (18 U.S.C. 3571(e)). This prohibition applies regardless of the presence or absence of signs.

This map does not display nonmotorized uses, over-snow vehicle uses, or other facilities and attractions on the Nez Perce-Clearwater National Forests. Obtain forest visitor information from the local national forest office.

Designated roads, trails, and areas may also be subject to temporary, emergency closures. As a visitor, you must comply with signs notifying you of such restrictions. A national forest may issue an order to close a road, trail, or area on a temporary basis to protect the life, health or safety of forest visitors or the natural or cultural resources in these areas. Such a temporary and/or emergency closures are consistent with the Travel Management Rule (36 CFR 212.52 (b); 36 CFR 261 subpart B).

The designation "road or trail open to all motor vehicles" does not supersede State traffic law.

OPERATOR RESPONSIBILITIES

Operating a motor vehicle on National Forest System roads, National Forest System trails, and in areas on National Forest System lands carries a greater responsibility than operating that vehicle in a city or other developed setting. Not only must you know and follow all applicable traffic laws, you need to show concern for the environment as well as other forest users. The misuse of motor vehicles can lead to the temporary or permanent closure of any designated road, trail, or area. As a motor vehicle operator, you are subject to State traffic law, including State requirements for licensing, registration, and operation of the vehicle in question.

Motor vehicle use, especially off-highway vehicle use, involves inherent risks that may cause property damage, serious injury, and possibly death to participants. Drive cautiously and anticipate rough surfaces and features, such as snow, mud, vegetation, and water crossings common to remote driving conditions. By your participation, you voluntarily assume full responsibility for these damages, risks, and dangers. Take care at all times to protect yourself and those under your responsibility.

Much of the Nez Perce-Clearwater National Forests is remote, and medical assistance may not be readily available. Cellular telephones do not work in many areas of the Nez Perce-Clearwater National Forests. Take adequate food, water, first aid supplies, and other equipment appropriate for the conditions and expected weather.



ALWAYS REMEMBER TO RESPECT PRIVATE LAND! PROTECT YOUR PRIVILEGE. STAY ON DESIGNATED ROADS AND TRAILS AND IN DESIGNATED AREAS.

Read and understand this map in its entirety. If you have questions please contact the Nez Perce-Clearwater National Forests for clarification.

As a motor vehicle operator on a National Forest System road, trail, or area, you must comply with this map, as well as all Federal, State, and local laws and regulations.

Legend

- Roads Open to Highway Legal Vehicles
- Roads Open to all Vehicles
- Trails Open to all Vehicles
- Trails Open to Vehicles 50" or Less in Width
- Trails Open to Wheeled Vehicles 50" or Less in Width
- Trails Open to Motorcycles Only
- Special Designation (See Table)
- Seasonal Designation (See Table)
- Highways, US, State, County
- Other Public Roads
- Other Public Trails
- Short Route Identifier
- FS Campgrounds
- Picnic Area
- Motorized Trailhead
- Information Site
- Peaks
- Forest or Unit Boundary
- National Forest System Lands
- Non-National Forest System Lands within the National Forest
- Wilderness Areas
- Political Boundary
- Township and Range Lines
- Section Lines
- Lakes and Rivers

EXPLANATION OF LEGEND ITEMS

Roads Open to Highway Legal Vehicles Only:

These roads are open only to motor vehicles licensed under State law for general operation on all public roads within the State.

Roads Open to All Vehicles:

These roads are open to all motor vehicles, including smaller off-highway vehicles that may not be licensed for highway use (but not to oversize or overweight vehicles under State traffic law).

Trails Open to All Vehicles:

These trails are open to all motor vehicles, including both highway legal and nonhighway legal vehicles.

Trails Open to Wheeled Vehicles 50 Inches or Less in Width:

These trails are open only to motor vehicles less than 50 inches in width at the widest point on the vehicle.

Trails Open to Wheeled Vehicles 50 Inches or Less in Width:

These trails are open only to wheeled, motor vehicles less than 50 inches in width at the widest point on the vehicle.

Trails Open to Motorcycles Only:

These trails are open only to motorcycles. Sidecars are not permitted.

Special Vehicle Designation:

This symbol indicates the road or trail is open to classes of vehicles other than those listed above. Refer to the Seasonal and Special Designation Table for further instructions.

Seasonal Designation:

This symbol, used in conjunction with one of the other road or trail symbols, indicates that the road or trail is open only during certain portions of the year. Refer to Seasonal and Special Designation Table for further instructions.

Other Public Roads and Trails:

Highways, U.S., State
Other Public Roads
Other Public Trails

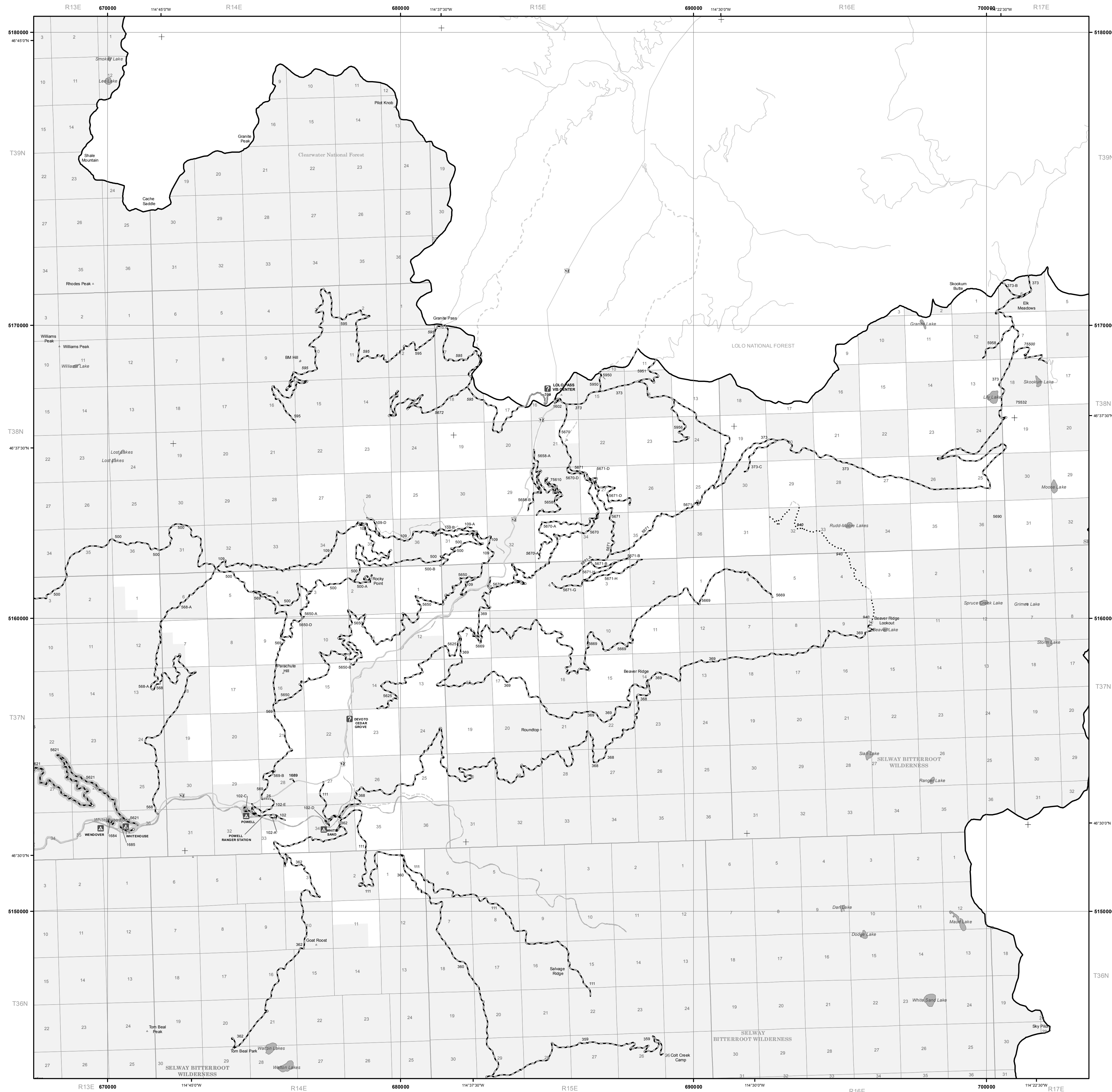
These symbols are used to show routes that the Forest Service does have not jurisdiction over and has not designated for motorized use. These symbols are part of the reference layers showing connections to towns and cities outside the forest boundary.

Short Route Identifier:

This symbol is used for roads that are too short to show a symbol type on the map. The symbol contains the road or trail number. Users should refer to the corresponding number in the Short Route Table for more information on the designated route.

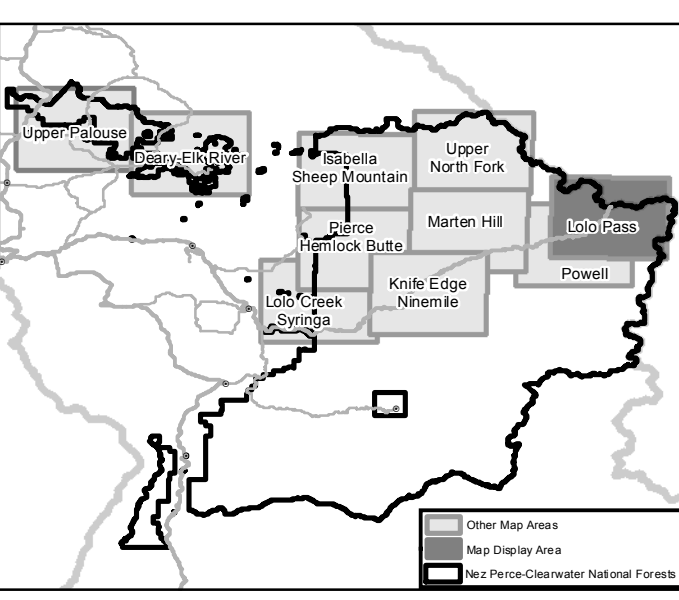
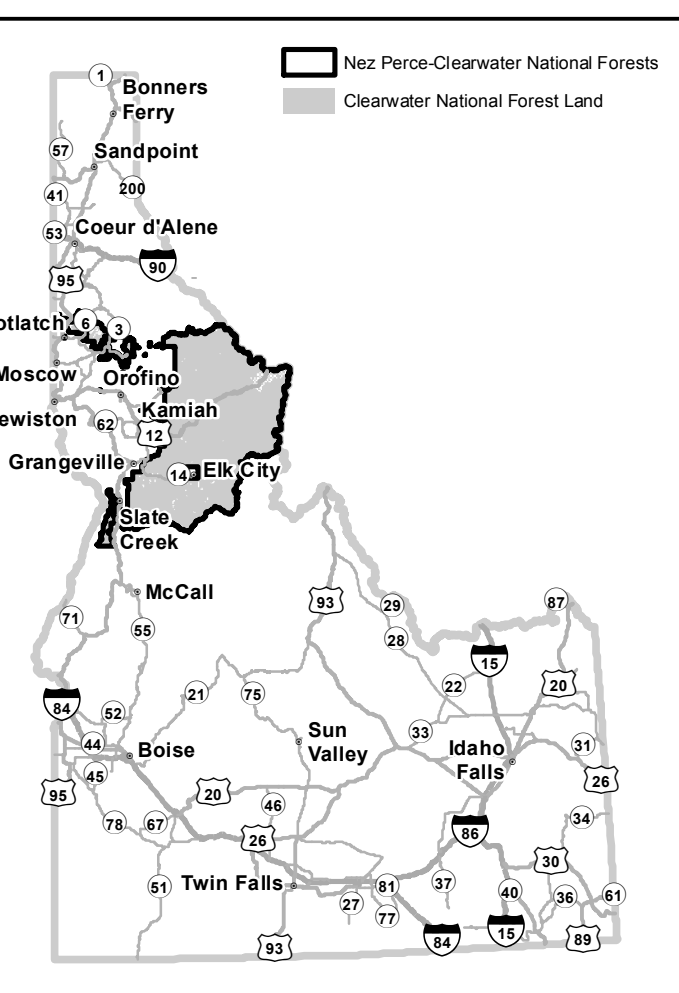
Motorized Trail Access:

This symbol indicates a trailhead for access to a motorized route. Not all motorized routes have trailheads and those that do may range from primitive to developed.



SEE BACK SIDE OF MAP FOR TABLE OF SEASONAL AND SPECIAL VEHICLE DESIGNATIONS

VICINITY MAP



INFORMATION SOURCES

Nez Perce-Clearwater National Forests Supervisors Office
903 3rd Street
Kamiah, Idaho 83536
208-935-2513

North Fork Ranger District 12740 Hwy 12 Orofino, ID 83544 208-476-4541	Lochsa/Powell Ranger District 502 Lowry Street Kootenai, ID 83539 208-926-4274
Palouse Ranger District 1700 Hwy 8 Potlatch, ID 83855 208-875-1131	Lolo Pass Visitor Center 21200 Hwy 12 West Lolo, MT 59847 208-942-3113

treadlightly®
LEAVING A GOOD IMPRESSION

USDA is an equal opportunity provider, employer, and lender.

Seasonal and Special Vehicle Designations			
Route Number	Legend	Special Vehicle Designation	Dates Allowed
2	***** Trails open to motorcycles, with Seasonal Designation	Seasonal Designation	05/01-10/01
11, 17, 20, 25, 76, 101, 169, 176, 203, 255, 419, 524, 532, 602, 604, 605, 606, 608, 609, 610, 611, 612, 613, 614, 615, 810, 811, 812, 813, 814, 815, 816, 5010, 5041, 5141, 5550, 74232, 74242, 74388, 74514, 74560, 74561, 604-A, 811-A, 812-A, T100-B, T100-D, T101-E, T101-G, T246-C, T246-E, T246-F, T246-J, T246-K, T250-J, T250-K, T250-P, T250-S, T255-B, T255-D, T486-N, T4800, T4800-A, T4800-B, T4800-C, T4800-E, T4802, T4802-A, T4802-B, T4802-C, T4802-D, T481-S, T485-A, T496, T5006-B, T5006-C, T5006-D, T5007-A, T5007-B, T5009-A, T500-G, T5021-A, T5021-B, T5021-C, T5021-D, T5038, T5043, T5043-A, T5047, T5047-A, T5048, T5048-A, T5056, T508, T509, T510, T5101, T5107, T5107-C, T5107-D, T5111-B, T5111-C, T5112-A, T5112-B, T5112-C, T5114, T5114-A, T5114-B, T5115-B, T5115-H, T5117, T5117-A, T5118-B, T5118-E, T5118-F, T5118-G, T5119-A, T5119-C, T5120-A, T5122-B, T5124-B, T5124-D, T5124-F, T5124-H, T5124-J, T5126, T5126-A, T5126-B, T5126-C, T5131, T5131-A, T5131-B, T5135, T5137, T5137-A, T5141-E, T5144, T5147, T5149, T514-B, T514-J, T514-K, T514-L, T5151, T5154, T5154-A, T5154-B, T5154-C, T5156-A, T5156-B, T5156-C, T5158-D, T5160-C, T5160-E, T5160-F, T5160-H, T5160-J, T5160-K, T5169, T5170-A, T5173-A, T5173-C, T5173-D, T5174, T5174-A, T5174-B, T5174-C, T5176, T5176-A, T5179, T5183, T5185, T5185-A, T5186, T5186-A, T5195, T519-A, T5203, T5205, T5208, T5208-A, T5208-B, T5208-C, T520-A, T520-B, T520-C, T5215-G, T5216-C, T5216-G, T5216-H, T5216-J, T5216-K, T5223, T5223-A, T5223-B, T5223-C, T5230, T5230-B, T5231, T5250, T5250-A, T5251, T5251-A, T5251-B, T5254, T5255, T5256, T5259-A, T5259-B, T5259-C, T5260, T5260-A, T5260-C, T5261, T5261-A, T5261-C, T5261-D, T5262, T5263, T5282, T5282-C, T5282-E, T5282-G, T5285, T5285-C, T5295, T5301-A, T5311, T5325-A, T5326, T5326-A, T5353, T535-F, T5374, T5376, T5377, T5380, T5389, T538-A, T538-B, T541-B, T541-C, T5434, T5434-C, T5437, T5437-A, T5437-B, T5437-C, T5437-D, T5437-F, T5438-A, T5441, T5452, T5453, T5455, T5455-A, T5456, T5456-A, T547, T547-B, T547-C, T547-D, T547-H, T547-M, T547-R, T547-T, T547-W, T547-X, T5503-B, T5505, T5505-A, T5525, T5525-A, T555-A, T570, T574, T6004, T6004-A, T6004-B, T6004-C, T6004-D, T6004-E, T6011, T6014-A, T6014-C, T6014-D, T6017, T6018, T6019, T6020, T6022, T6049, T6050, T6050-A, T6069, T6070, T6070-A, T6071, T6071-A, T6072, T6072-A, T6073, T6073-A, T6073-B, T677-A, T681-A, T681-B, T681-C, T681-D, T681-E, T681-F, T682-C, T682-X, T682-Z, T683-A, T700, T701, T701-A, T701-B, T701-C, T701-E, T702, T702-A, T706, T708, T710-A, T713, T718, T718-A, T720-F, T724-B, T724-C, T724-D, T726, T726-A, T73042, T73043, T73045, T73048, T73049, T73050, T73051, T73053, T735-A, T735-B, T735-C, T737-A, T737-E, T737-G, T74004, T74005, T74032, T74040, T74042, T74044, T74045, T74046, T74049, T74062, T74063, T74064, T74093, T74094, T74095, T74119, T74121, T74122, T74125, T74132, T74187, T74195, T74205, T74205-1, T74206, T74210, T74222, T74223, T74224, T74226, T74227, T74236, T74238, T74239, T74243, T74244, T74247, T74248, T74249, T74250, T74279, T74289, T74291, T74295, T74329, T74330, T74351, T74352, T74502, T74503, T74504, T74505, T74528, T74594, T74595, T74596, T74597, T74598, T74599, T74609, T74613, T74615, T75093, T75136, T75175	Special Vehicle Designation, with Seasonal Designation	ATV and Motorcycles	01/01-12/31
16, 65, 107, 135, 229, 258, 708, 850, 851, 852, 853, 854, 855, 856, 857, 116-A, 5053, 5323	***** Trails open to motorcycles, with Seasonal Designation	Seasonal Designation	06/01-10/01
105, 107, 111, 135, 142, 192, 201, 225, 705, 2230, 2240, 105-A	***** Trails open to motorcycles, with Seasonal Designation	Seasonal Designation	06/01-10/01
106, 167, 191, 691	***** Trails open to motorcycles, with Seasonal Designation	Seasonal Designation	08/01-11/15
107, 566, 1621, 1676, 1684, 1685, 5503, 5601, 5613, 5615, 5620, 5621, 5636, 102-C, 1649-A, 1649-B, 1649-C, 1649-D, 247-A, 247-B, 247-C, 535-B, 5615-A, 5615-B	***** Roads open to all Vehicles, with Seasonal Designation	Seasonal Designation	05/01-11/30
108	***** Special Vehicle Designation, with Seasonal Designation	All Highway Legal Vehicles, ATV and Motorcycles	05/01-11/30
252, 256, 486-D, 521-A, 521-B, 521-C, 530, 530-A, 530-B, 530-C, 530-D, 535, 535-C, 535-D, 535-E, 538, 547-G, 547-N, 552, 552-A, 552-B, 552-C, 552-D, 552-E, 552-F, 552-G, 552-H, 552-I, 552-J, 552-K, 552-L, 552-M, 552-N, 552-O, 552-P, 552-Q, 552-R, 552-S, 552-T, 552-U, 552-V, 552-W, 552-X, 552-Y, 552-Z, 553, 553-A, 553-B, 553-C, 553-D, 553-E, 553-F, 553-G, 553-H, 553-I, 553-J, 553-K, 553-L, 553-M, 553-N, 553-O, 553-P, 553-Q, 553-R, 553-S, 553-T, 553-U, 553-V, 553-W, 553-X, 553-Y, 553-Z, 554, 554-A, 554-B, 554-C, 554-D, 554-E, 554-F, 554-G, 554-H, 554-I, 554-J, 554-K, 554-L, 554-M, 554-N, 554-O, 554-P, 554-Q, 554-R, 554-S, 554-T, 554-U, 554-V, 554-W, 554-X, 554-Y, 554-Z, 555, 555-A, 555-B, 555-C, 555-D, 555-E, 555-F, 555-G, 555-H, 555-I, 555-J, 555-K, 555-L, 555-M, 555-N, 555-O, 555-P, 555-Q, 555-R, 555-S, 555-T, 555-U, 555-V, 555-W, 555-X, 555-Y, 555-Z, 556, 556-A, 556-B, 556-C, 556-D, 556-E, 556-F, 556-G, 556-H, 556-I, 556-J, 556-K, 556-L, 556-M, 556-N, 556-O, 556-P, 556-Q, 556-R, 556-S, 556-T, 556-U, 556-V, 556-W, 556-X, 556-Y, 556-Z, 557, 557-A, 557-B, 557-C, 557-D, 557-E, 557-F, 557-G, 557-H, 557-I, 557-J, 557-K, 557-L, 557-M, 557-N, 557-O, 557-P, 557-Q, 557-R, 557-S, 557-T, 557-U, 557-V, 557-W, 557-X, 557-Y, 557-Z, 558, 558-A, 558-B, 558-C, 558-D, 558-E, 558-F, 558-G, 558-H, 558-I, 558-J, 558-K, 558-L, 558-M, 558-N, 558-O, 558-P, 558-Q, 558-R, 558-S, 558-T, 558-U, 558-V, 558-W, 558-X, 558-Y, 558-Z, 559, 559-A, 559-B, 559-C, 559-D, 559-E, 559-F, 559-G, 559-H, 559-I, 559-J, 559-K, 559-L, 559-M, 559-N, 559-O, 559-P, 559-Q, 559-R, 559-S, 559-T, 559-U, 559-V, 559-W, 559-X, 559-Y, 559-Z, 560, 560-A, 560-B, 560-C, 560-D, 560-E, 560-F, 560-G, 560-H, 560-I, 560-J, 560-K, 560-L, 560-M, 560-N, 560-O, 560-P, 560-Q, 560-R, 560-S, 560-T, 560-U, 560-V, 560-W, 560-X, 560-Y, 560-Z, 561, 561-A, 561-B, 561-C, 561-D, 561-E, 561-F, 561-G, 561-H, 561-I, 561-J, 561-K, 561-L, 561-M, 561-N, 561-O, 561-P, 561-Q, 561-R, 561-S, 561-T, 561-U, 561-V, 561-W, 561-X, 561-Y, 561-Z, 562, 562-A, 562-B, 562-C, 562-D, 562-E, 562-F, 562-G, 562-H, 562-I, 562-J, 562-K, 562-L, 562-M, 562-N, 562-O, 562-P, 562-Q, 562-R, 562-S, 562-T, 562-U, 562-V, 562-W, 562-X, 562-Y, 562-Z, 563, 563-A, 563-B, 563-C, 563-D, 563-E, 563-F, 563-G, 563-H, 563-I, 563-J, 563-K, 563-L, 563-M, 563-N, 563-O, 563-P, 563-Q, 563-R, 563-S, 563-T, 563-U, 563-V, 563-W, 563-X, 563-Y, 563-Z, 564, 564-A, 564-B, 564-C, 564-D, 564-E, 564-F, 564-G, 564-H, 564-I, 564-J, 564-K, 564-L, 564-M, 564-N, 564-O, 564-P, 564-Q, 564-R, 564-S, 564-T, 564-U, 564-V, 564-W, 564-X, 564-Y, 564-Z, 565, 565-A, 565-B, 565-C, 565-D, 565-E, 565-F, 565-G, 565-H, 565-I, 565-J, 565-K, 565-L, 565-M, 565-N, 565-O, 565-P, 565-Q, 565-R, 565-S, 565-T, 565-U, 565-V, 565-W, 565-X, 565-Y, 565-Z, 566, 566-A, 566-B, 566-C, 566-D, 566-E, 566-F, 566-G, 566-H, 566-I, 566-J, 566-K, 566-L, 566-M, 566-N, 566-O, 566-P, 566-Q, 566-R, 566-S, 566-T, 566-U, 566-V, 566-W, 566-X, 566-Y, 566-Z, 567, 567-A, 567-B, 567-C, 567-D, 567-E, 567-F, 567-G, 567-H, 567-I, 567-J, 567-K, 567-L, 567-M, 567-N, 567-O, 567-P, 567-Q, 567-R, 567-S, 567-T, 567-U, 567-V, 567-W, 567-X, 567-Y, 567-Z, 568, 568-A, 568-B, 568-C, 568-D, 568-E, 568-F, 568-G, 568-H, 568-I, 568-J, 568-K, 568-L, 568-M, 568-N, 568-O, 568-P, 568-Q, 568-R, 568-S, 568-T, 568-U, 568-V, 568-W, 568-X, 568-Y, 568-Z, 569, 569-A, 569-B, 569-C, 569-D, 569-E, 569-F, 569-G, 569-H, 569-I, 569-J, 569-K, 569-L, 569-M, 569-N, 569-O, 569-P, 569-Q, 569-R, 569-S, 569-T, 569-U, 569-V, 569-W, 569-X, 569-Y, 569-Z, 570, 570-A, 570-B, 570-C, 570-D, 570-E, 570-F, 570-G, 570-H, 570-I, 570-J, 570-K, 570-L, 570-M, 570-N, 570-O, 570-P, 570-Q, 570-R, 570-S, 570-T, 570-U, 570-V, 570-W, 570-X, 570-Y, 570-Z, 571, 571-A, 571-B, 571-C, 571-D, 571-E, 571-F, 571-G, 571-H, 571-I, 571-J, 571-K, 571-L, 571-M, 571-N, 571-O, 571-P, 571-Q, 571-R, 571-S, 571-T, 571-U, 571-V, 571-W, 571-X, 571-Y, 571-Z, 572, 572-A, 572-B, 572-C, 572-D, 572-E, 572-F, 572-G, 572-H, 572-I, 572-J, 572-K, 572-L, 572-M, 572-N, 572-O, 572-P, 572-Q, 572-R, 572-S, 572-T, 572-U, 572-V, 572-W, 572-X, 572-Y, 572-Z, 573, 573-A, 573-B, 573-C, 573-D, 573-E, 573-F, 573-G, 573-H, 573-I, 573-J, 573-K, 573-L, 573-M, 573-N, 573-O, 573-P, 573-Q, 573-R, 573-S, 573-T, 573-U, 573-V, 573-W, 573-X, 573-Y, 573-Z, 574, 574-A, 574-B, 574-C, 574-D, 574-E, 574-F, 574-G, 574-H, 574-I, 574-J, 574-K, 574-L, 574-M, 574-N, 574-O, 574-P, 574-Q, 574-R, 574-S, 574-T, 574-U, 574-V, 574-W, 574-X, 574-Y, 574-Z, 575, 575-A, 575-B, 575-C, 575-D, 575-E, 575-F, 575-G, 575-H, 575-I, 575-J, 575-K, 575-L, 575-M, 575-N, 575-O, 575-P, 575-Q, 575-R, 575-S, 575-T, 575-U, 575-V, 575-W, 575-X, 575-Y, 575-Z, 576, 576-A, 576-B, 576-C, 576-D, 576-E, 576-F, 576-G, 576-H, 576-I, 576-J, 576-K, 576-L, 576-M, 576-N, 576-O, 576-P, 576-Q, 576-R, 576-S, 576-T, 576-U, 576-V, 576-W, 576-X, 576-Y, 576-Z, 577, 577-A, 577-B, 577-C, 577-D, 577-E, 577-F, 577-G, 577-H, 577-I, 577-J, 577-K, 577-L, 577-M, 577-N, 577-O, 577-P, 577-Q, 577-R, 577-S, 577-T, 577-U, 577-V, 577-W, 577-X, 577-Y, 577-Z, 578, 578-A, 578-B, 578-C, 578-D, 578-E, 578-F, 578-G, 578-H, 578-I, 578-J, 578-K, 578-L, 578-M, 578-N, 578-O, 578-P, 578-Q, 578-R, 578-S, 578-T, 578-U, 578-V, 578-W, 578-X, 578-Y, 578-Z, 579, 579-A, 579-B, 579-C, 579-D, 579-E, 579-F, 579-G, 579-H, 579-I, 579-J, 579-K, 579-L, 579-M, 579-N, 579-O, 579-P, 579-Q, 579-R, 579-S, 579-T, 579-U, 579-V, 579-W, 579-X, 579-Y, 579-Z, 580, 580-A, 580-B, 580-C, 580-D, 580-E, 580-F, 580-G, 580-H, 580-I, 580-J, 580-K, 580-L, 580-M, 580-N, 580-O, 580-P, 580-Q, 580-R, 580-S, 580-T, 580-U, 580-V, 580-W, 580-X, 580-Y, 580-Z, 581, 581-A, 581-B, 581-C, 581-D, 581-E, 581-F, 581-G, 581-H, 581-I, 581-J, 581-K, 581-L, 581-M, 581-N, 581-O, 581-P, 581-Q, 581-R, 581-S, 581-T, 581-U, 581-V, 581-W, 581-X, 581-Y, 581-Z, 582, 582-A, 582-B, 582-C, 582-D, 582-E, 582-F, 582-G, 582-H, 582-I, 582-J, 582-K, 582-L, 582-M, 582-N, 582-O, 582-P, 582-Q, 582-R, 582-S, 582-T, 582-U, 582-V, 582-W, 582-X, 582-Y, 582-Z, 583, 583-A, 583-B, 583-C, 583-D, 583-E, 583-F, 583-G, 583-H, 583-I, 583-J, 583-K, 583-L, 583-M, 583-N, 583-O, 583-P, 583-Q, 583-R, 583-S, 583-T, 583-U, 583-V, 583-W, 583-X, 583-Y, 583-Z, 584, 584-A, 584-B, 584-C, 584-D, 584-E, 584-F, 584-G, 584-H, 584-I, 584-J, 584-K, 584-L, 584-M, 584-N, 584-O, 584-P, 584-Q, 584-R, 584-S, 584-T, 584-U, 584-V, 584-W, 584-X, 584-Y, 584-Z, 585, 585-A, 585-B, 585-C, 585-D, 585-E, 585-F, 585-G, 585-H, 585-I, 585-J, 585-K, 585-L, 585-M, 585-N, 585-O, 585-P, 585-Q, 585-R, 585-S, 585-T, 585-U, 585-V, 585-W, 585-X, 585-Y, 585-Z, 586, 586-A, 586-B, 586-C, 586-D, 586-E, 586-F, 586-G, 586-H, 586-I, 586-J, 586-K, 586-L, 586-M, 586-N, 586-O, 586-P, 586-Q, 586-R, 586-S, 586-T, 586-U, 586-V, 586-W, 586-X, 586-Y, 586-Z, 587, 587-A, 587-B, 587-C, 587-D, 587-E, 587-F, 587-G, 587-H, 587-I, 587-J, 587-K, 587-L, 587-M, 587-N, 587-O, 587-P, 587-Q, 587-R, 587-S, 587-T, 587-U, 587-V, 587-W, 587-X, 587-Y, 587-Z, 588, 588-A, 588-B, 588-C, 588-D, 588-E, 588-F, 588-G, 588-H, 588-I, 588-J, 588-K, 588-L, 588-M, 588-N, 588-O, 588-P, 588-Q, 588-R, 588-S, 588-T, 588-U, 588-V, 588-W, 588-X, 588-Y, 588-Z, 589, 589-A, 589-B, 589-C, 589-D, 589-E, 589-F, 589-G, 589-H, 589-I, 589-J, 589-K, 589-L, 589-M, 589-N, 589-O, 589-P, 589-Q, 589-R, 589-S, 589-T, 589-U, 589-V, 589-W, 589-X, 589-Y, 589-Z, 590, 590-A, 590-B, 590-C, 590-D, 590-E, 590-F, 590-G, 590-H, 590-I, 590-J, 590-K, 590-L, 590-M, 590-N, 590-O, 590-P, 590-Q, 590-R, 590-S, 590-T, 590-U, 590-V, 590-W, 590-X, 590-Y, 590-Z, 591, 591-A, 591-B, 591-C, 591-D, 591-E, 591-F, 591-G, 591-H, 591-I, 591-J, 591-K, 591-L, 591-M, 591-N, 591-O, 591-P, 591-Q, 591-R, 591-S, 591-T, 591-U, 591-V, 591-W, 591-X, 591-Y, 591-Z, 592, 592-A, 592-B, 592-C, 592-D, 592-E, 592-F, 592-G, 592-H, 592-I, 592-J, 592-K, 592-L, 592-M, 592-N, 592-O, 592-P, 592-Q, 592-R, 592-S, 592-T, 592-U, 592-V, 592-W, 592-X, 592-Y, 592-Z, 593, 593-A, 593-B, 593-C, 593-D, 593-E, 593-F, 593-G, 593-H, 593-I, 593-J, 593-K, 593-L, 593-M, 593-N, 593-O, 593-P, 593-Q, 593-R, 593-S, 593-T, 593-U, 593-V, 593-W, 593-X, 593-Y, 593-Z, 594, 594-A, 594-B, 594-C, 594-D, 594-E, 594-F, 594-G, 594-H, 594-I, 594-J, 594-K, 594-L, 594-M, 594-N, 594-O, 594-P, 594-Q, 594-R, 594-S, 594-T, 594-U, 594-V, 594-W, 594-X, 594-Y, 594-Z, 595, 595-A, 595-B, 595-C, 595-D, 595-E, 595-F, 595-G, 595-H, 595-I, 595-J, 595-K, 595-L, 595-M, 595-N, 595-O, 595-P, 595-Q, 595-R, 595-S, 595-T, 595-U, 595-V, 595-W, 595-X, 595-Y, 595-Z, 596, 596-A, 596-B, 596-C, 596-D, 596-E, 596-F, 596-G, 596-H, 596-I, 596-J, 596-K, 596-L, 596-M, 596-N, 596-O, 596-P, 596-Q, 596-R, 596-S, 596-T, 596-U, 596-V, 596-W, 596-X, 596-Y, 596-Z, 597, 597-A, 597-B, 597-C, 597-D, 597-E, 597-F, 597-G, 597-H, 597-I, 597-J, 597-K, 597-L, 597-M, 597-N, 597-O, 597-P, 597-Q, 597-R, 597-S, 597-T, 597-U, 597-V, 597-W, 597-X, 597-Y, 597-Z, 598, 598-A, 598-B, 598-C, 598-D, 598-E, 598-F, 598-G, 598-H, 598-I, 598-J, 598-K, 598-L, 598-M, 598-N, 598-O, 598-P, 598-Q, 598-R, 598-S, 598-T, 598-U, 598-V, 598-W, 598-X, 598-Y, 598-Z, 599, 599-A, 599-B, 599-C, 599-D, 599-E, 599-F, 599-G, 599-H, 599-I, 599-J, 599-K, 599-L, 599-M, 599-N, 599-O, 599-P, 599-Q, 599-R, 599-S, 599-T, 599-U, 599-V, 599-W, 599-X, 599-Y, 599-Z, 600, 600-A, 600-B, 600-C, 600-D, 600-E, 600-F, 600-G, 600-H, 600-I, 600-J, 600-K, 600-L, 600-M, 600-N, 600-O, 600-P, 600-Q, 600-R, 600-S, 600-T, 600-U, 600-V, 600-W, 600-X, 600-Y, 600-Z, 601, 601-A, 601-B, 601-C, 601-D, 601-E, 601-F, 601-G, 601-H, 601-I, 601-J, 601-K, 601-L, 601-M, 601-N, 601-O, 601-P, 601-Q, 601-R, 601-S, 601-T, 601-U, 601-V, 601-W, 601-X, 601-Y, 601-Z, 602, 602-A, 602-B, 602-C, 602-D, 602-E, 602-F, 602-G, 602-H, 602-I, 602-J, 602-K, 602-L, 602-M, 602-N, 602-O, 602-P, 602-Q, 602-R, 602-S, 602-T, 602-U, 602-V, 602-W, 602-X, 602-Y, 602-Z, 603, 603-A, 603-B, 603-C, 603-D, 603-E, 603-F, 603-G, 603-H, 603-I, 603-J, 603-K, 603-L, 603-M, 603-N, 603-O, 603-P, 603-Q, 603-R, 603-S, 603-T, 603-U, 603-V, 603-W, 603-X, 603-Y, 603-Z, 604, 604-A, 604-B, 604-C, 604-D, 604-E, 604-F, 604-G, 604-H, 604-I, 604-J, 604-K, 604-L, 604-M, 604-N, 604-O, 604-P, 604-Q, 604-R, 604-S, 604-T, 604-U, 604-V, 604-W, 604-X, 604-Y, 604-Z, 605, 605-A, 605-B, 605-C, 605-D, 605-E, 605-F, 605-G, 605-H, 605-I, 605-J, 605-K, 605-L, 605-M, 605-N, 605-O, 605-P, 605-Q, 605-R, 605-S, 605-T, 605-U, 605-V, 605-W, 605-X, 605-Y, 605-Z, 606, 606-A, 606-B, 606-C, 606-D, 606-E, 606-F, 606-G, 606-H, 606-I, 606-J, 606-K, 606-L, 606-M, 6			