


United States Department of Agriculture  
Forest Service

01 JAN 2020

AMTANA

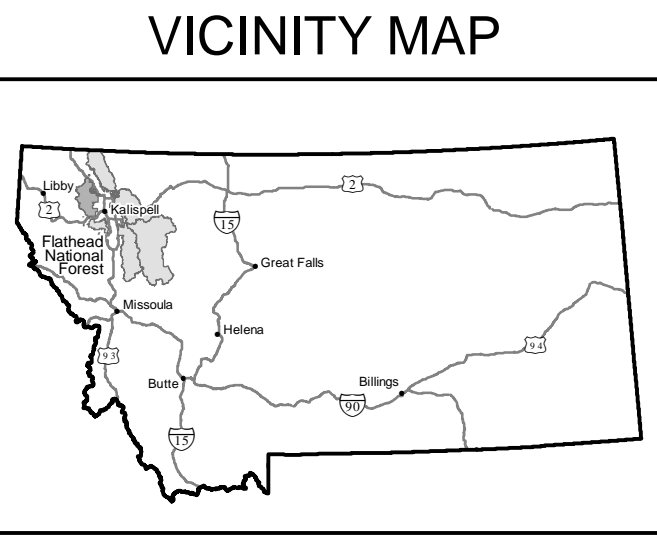
USA

America's Great Outdoors



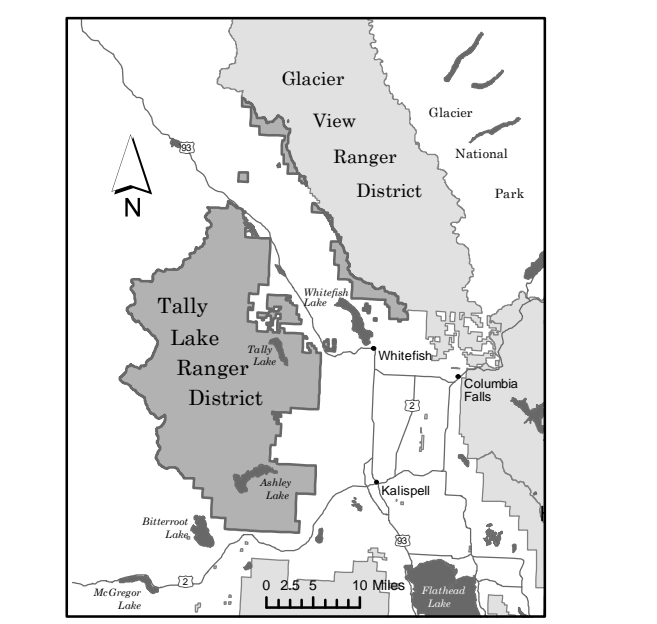
RANGER DISTRICT  
TALLY LAKE  
FLATHEAD NATIONAL FOREST

# Motor Vehicle Use Map



**TALLY LAKE RANGER DISTRICT**  
650 Wolfpack Way  
Kalispell, MT 59901  
(406) 758-5204

**FOREST SUPERVISOR'S OFFICE**  
650 Wolfpack Way  
Kalispell, MT 59901  
(406) 758-5204  
[www.fs.usda.gov/flathead/](http://www.fs.usda.gov/flathead/)



**treadlightly!**  
LEAVING A GOOD IMPRESSION

Travel and recreate with minimum impact.

Respect the environment and the rights of others.

Educate yourself plan and prepare before you go.

Allow for future use of the outdoors by leaving it better than you found it.

Discover the rewards of responsible recreation.

For more information on Tread Lightly!, go to [www.treadlightly.org](http://www.treadlightly.org) or call 1-800-966-9900.

The U.S. Department of Agriculture (USDA) prohibits discrimination in all its programs and activities on the basis of race, color, national origin, age, disability, and where applicable, sex, marital status, familial status, parental status, religion, sexual orientation, genetic information, political beliefs, reprisal, or because all or part of an individual's income is derived from any public assistance program. (Not all prohibited bases apply to all programs.) Persons with disabilities who require alternative means for communication of program information (Braille, large print, audiotape, etc.) should contact USDA's TARGET Center at (202) 720-2600 (voice and TDD). To file a complaint of discrimination, write to USDA, Director, Office of Civil Rights, 1400 Independence Avenue, S.W., Washington, D.C. 20250-9410, or call (800) 795-3272 (voice) or (202) 720-6382 (TDD). USDA is an equal opportunity provider.

## PURPOSE AND CONTENTS OF THIS MAP

The designations shown on this motor vehicle use map (MVUM) were made by the responsible official pursuant to 36 CFR 212.51; are effective as of the date on the front cover of this MVUM, and will remain in effect until superseded by next year's MVUM.



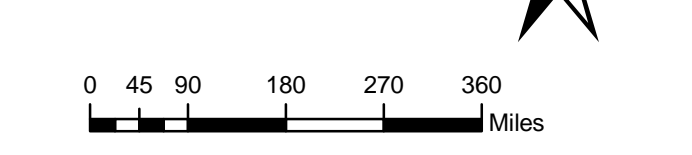
It is the responsibility of the user to acquire the current MVUM. This MVUM shows the National Forest System roads, National Forest System trails, and the areas on National Forest System lands in the Tally Lake ranger District that are designated for motor vehicle use pursuant to 36 CFR 212.51. This MVUM also identifies the vehicle classes allowed on each route and in each area, and any seasonal restrictions that apply on those routes and in those areas.

Designation of a road, trail, or area for motor vehicle use by a particular class of vehicle under 36 CFR 212.51 should not be interpreted as encouraging or inviting use or implying that the road, trail, or area is passable, actively maintained, or safe for travel. Motor vehicle designations include parking along designated routes and at facilities associated with designated routes when it is safe to do so and when not causing damage to National Forest System resources. Seasonal weather conditions and natural events may render designated roads and trails impassable for extended periods. Designated areas may contain dangerous or impassable terrain. Many designated roads and trails may be passable only by high-clearance vehicles or four-wheel-drive vehicles. Maintenance of designated roads and trails will depend on available resources, and many may receive little maintenance.

This motor vehicle use map identifies those roads, trails, and areas designated for the motor vehicle use under 36 CFR 212.51 for the purpose of enforcing the prohibition at 36 CFR 261.13. This is a limited purpose. The other public roads are shown for information and navigation purposes only and are not subject to designation under the Forest Service travel management regulation.

## Legend

- Roads Open to Highway Legal Vehicles
- ..... Trails Open to Motorcycles Only
- Trails Open to Vehicles 50" or Less in Width
- Seasonal Designation (See Table)
- Dispersed Camping (Motorized Access To)
- Highways, U.S. State
- Other Public Roads
- Other Public Trails
- FS Campground
- Information Site
- Motorized Trailhead
- Peaks
- Forest or Unit Boundary
- National Forest System Lands
- Non-National Forest System Lands within the National Forest
- Township and Range Lines
- Section Lines
- Lakes and Rivers



## EXPLANATION OF LEGEND ITEMS

**Roads Open to Highway Legal Vehicles Only:**  
Roads open only to motor vehicles licensed under State law for general operation on all public roads.

**Trails Open to Motorcycles Only:**  
Trails open only to motorcycles. Sidecars are not permitted.

**Trails Open to Vehicles 50 inches or Less in Width:**  
Trails open only to motor vehicles less than 50 inches in width at the widest point on the vehicle.

**Seasonal Designation:**  
This symbol, used in conjunction with one of the other road or trail symbols, indicates that the road or trail is open only during certain portions of the year. Refer to Seasonal and Special Designation Table for further instructions.

**Dispersed Camping (Motorized Access To)**  
Dispersed Camping, Both Sides  
Dispersed Camping, Left Side  
Dispersed Camping, Right Side  
This symbol is used along with a designated road or trail to indicate limited cross-country motor vehicle use within a specific distance of that route, solely for the purpose of dispersed camping. The dots indicate where this activity is permitted. They may be on the left, right, or both sides of the route. Refer to the Dispersed Camping Table for specifics.

**Other Public Roads and Trails:**  
Highways, U.S., State, County  
Other Public Roads  
Other Public Trails  
These symbols are used to show routes the Forest Service does not have jurisdiction over and has not designated for motorized use. These symbols are part of the reference layers showing connections to towns and cities outside the forest boundary.

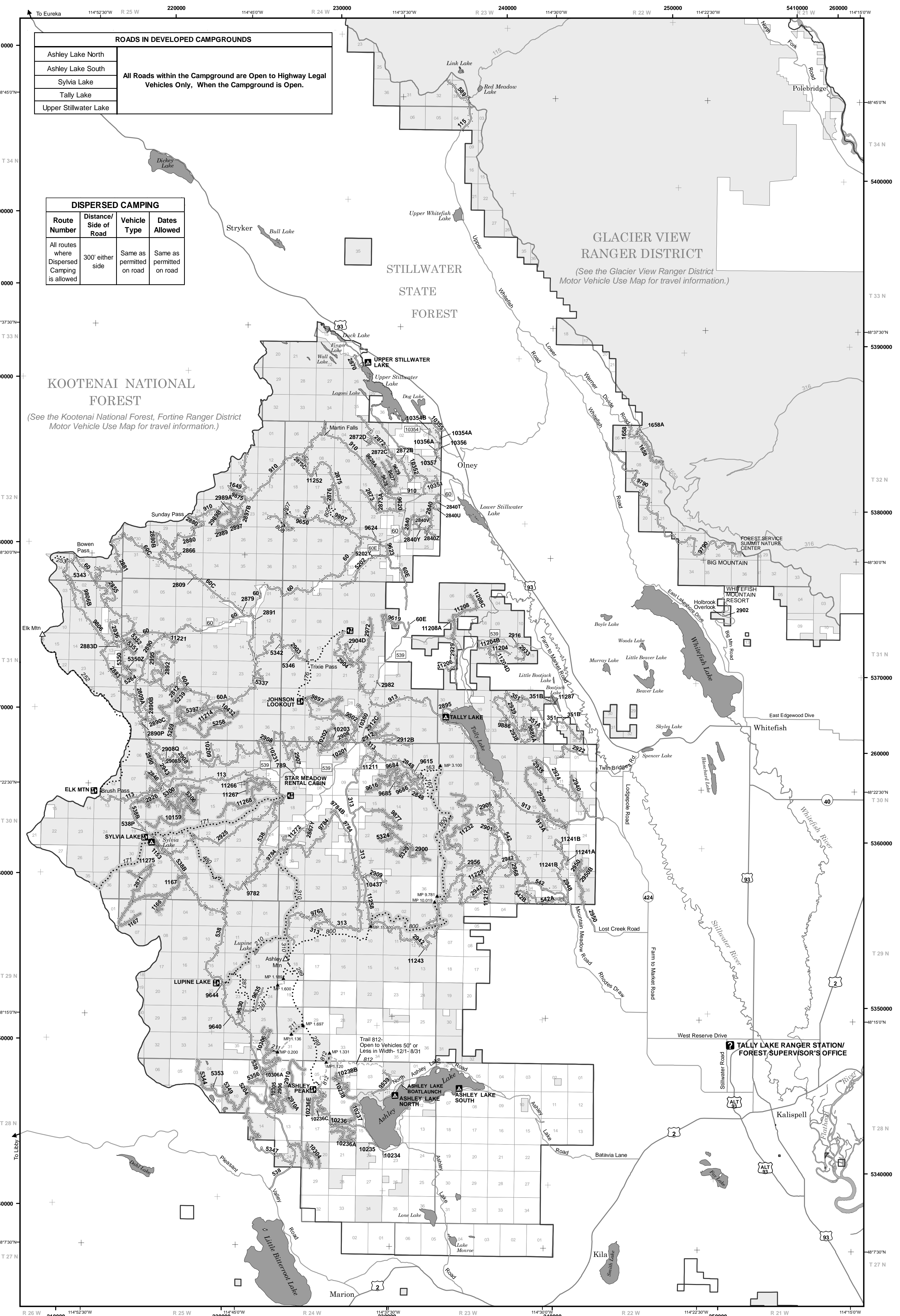
**Motorized Trail Access:**  
This symbol indicates a trailhead for access to a motorized route. Not all motorized routes have trailheads and those that do may range from primitive to developed.

**Milepost Marker:**  
This symbol is used to display the beginning and ending mileposts of a road that has a change in the designation but not the symbology.

**DISPERSED CAMPING**

- Motor vehicle travel off of designated roads on National Forest System Lands for the purpose of dispersed camping is permissible within 300 feet of designated motorized roads.
- Campsite selection must be completed by nonmotorized means, and then accessed by the most direct route (no more than 300 feet) without causing resource damage. (CFR 261.15)
- Cutting, damaging, or harming (such as driving over) trees or vegetation is not allowed to access dispersed camping spots. (CFR 261.15)
- Moving, going around, going over, or going past barriers on roads (i.e., gates, rocks, berms, barriers, signs, etc.) is not allowed. (CFR 261.12)
- In all developed recreation sites, such as developed campgrounds, picnic sites, trailheads, boat launches, etc., motor vehicle access is restricted to designated roads and parking sites only. 300 feet access off these roads is not allowed to access dispersed campsites. (CFR 261.16)
- This 300-foot district wide access exception does not apply where existing seasonal restrictions prohibit traveling off designated routes to a campsite. Existing local rules take precedence over this exception.

It is prohibited to operate any vehicle off National Forest System, State or County roads: In a manner which damages or unreasonably disturbs the land, wildlife, or vegetative resources. (CFR 261.15(h))



Seasonal & Special Vehicle Designations				
Route Number	Dates Allowed	Beginning Mile Post	Ending Mile Post	
Roads Open to Highway Legal Vehicles Only, With Seasonal Designation				
1658	04/15-11/30	2.619	4.477	
2846	07/01-08/31	0.000	1.200	
2871	07/01-08/31	0.000	3.210	
2897	07/01-08/31	0.000	0.607	
2897B	07/01-08/31	0.000	0.440	
2900	07/01-08/31	0.000	1.670	
2906	07/01-08/31	0.000	1.190	
2910	07/01-08/31	0.000	1.790	
2910A	07/01-08/31	0.000	0.600	
2912	07/01-08/31	0.943	2.020	
2912C	07/01-08/31	0.000	0.930	
2920	07/01-08/31	0.000	3.900	
2926	07/01-08/31	0.063	3.955	
2940	07/01-08/31	0.000	0.800	
2943	07/01-08/31	0.000	2.400	
2950	07/01-08/31	1.147	2.900	
2950B	07/01-08/31	0.000	0.700	
2972	07/01-08/31	0.000	2.000	
2989	07/01-08/31	0.000	1.500	
2988A	07/01-08/31	0.000	0.470	
2989B	07/01-08/31	0.000	1.030	
2995	07/01-08/31	0.000	1.070	
5204	07/01-08/31	0.000	0.340	
5239	07/01-08/31	0.000	2.690	
5258	07/01-08/31	0.000	2.500	
5259	07/01-08/31	0.000	0.928	
5264	07/01-08/31	0.000	0.640	
5300	07/01-08/31	0.000	2.650	
5306	07/01-08/31	0.000	2.640	
5324	07/01-08/31	0.000	0.700	
5329	07/01-08/31	0.000	1.100	
5344	07/01-08/31	0.000	4.892	
5347	07/01-08/31	2.252	4.170	
5349	07/01-08/31	0.000	0.580	
5350	07/01-08/31	0.069	2.000	
5350Z	07/01-08/31	0.000	0.400	
5351	07/01-08/31	0.000	0.600	
5352	07/01-08/31	0.000	0.600	
5353	07/01-08/31	0.000	0.340	
5356	07/01-08/31	0.000	0.630	
5397	07/01-08/31	0.000	2.460	
9616	07/01-08/31	0.000	3.820	
9619	07/01-08/31	0.567	2.370	
9627	07/01-08/31	0.082	1.470	
9628	07/01-08/31	0.000	1.150	
9628A	07/01-08/31	0.000	0.870	
9629	07/01-08/31	0.000	1.400	
9684	07/01-08/31	0.000	1.340	
9685	07/01-08/31	0.000	1.080	
9784B	07/01-08/31	0.000	0.370	
9877	07/01-08/31	0.989	5.100	
9897	07/01-08/31	0.126	3.000	
10159	07/01-08/31	0.000	3.090	
10201	07/01-08/31	0.000	0.570	
10202	07/01-08/31	0.000	1.370	
10203	07/01-08/31	0.000	0.682	
10231	07/01-08/31	0.000	0.940	
10236A	07/01-08/31	0.000	3.380	
10236C	07/01-08/31	0.069	0.250	
10236E	07/01-08/31	0.091	1.030	
10237	07/01-08/31	0.000	1.270	
10238	07/01-08/31	0.057	2.340	
10238B	07/01-08/31	0.000	0.460	
10304	07/01-08/31	0.000	3.000	
10305	07/01-08/31	0.000	1.370	
10306	07/01-08/31	0.000	3.830	
10306A	07/01-08/31	0.000	0.200	
10432	07/01-08/31	0.000	1.600	
11208	07/01-08/31	0.000	2.050	
11208A	07/01-08/31	0.000	0.210	
11208C	07/01-08/31	0.000	0.630	
11214	07/01-08/31	0.000	1.460	
11232	07/01-08/31	0.000	4.450	
11266	07/01-08/31	0.000	1.090	
11267	07/01-08/31	0.000	0.590	
11268	07/01-08/31	0.000	3.600	
11274	07/01-08/31	0.000	0.270	
Trails Open to Motorcycles Only, With Seasonal Designation				
171	12/01-8/31	0.000	10.500	
210	12/01-8/31	0.000	3.000	
211	12/01-8/31	0.000	0.200	
211	12/01-8/31	1.136	1.697	
310	12/01-8/31	0.000	5.365	
480	12/01-8/31	0.000	3.500	
800	12/01-8/31	3.100	9.781	
800	12/01-8/31	10.019	15.400	
Trail Open to Vehicles 50" Or Less in Width, With Seasonal Designation				
812	12/01-8/31	1.120	1.331	