



United States Department of Agriculture  
Forest Service

# Flathead National Forest

## 2024 Cabin Rental Information

Reservations:  
National Recreation Reservation System  
(877)-444-6777  
[www.recreation.gov](http://www.recreation.gov)  
Booking limited to 6 months in advance.

Check [www.recreation.gov](http://www.recreation.gov) for most up to date information

USDA is an equal opportunity employer, provider and lender.

Cabin/ Ranger District	Fees/Night Availability	Maximum Stay	Description
<i>Ben Rover/ Glacier View</i>	<b>\$65</b> available year long	3 nights/ 7 days total per calendar year	Travel 34 miles north of Columbia Falls, MT on the North Fork Road (County Road #486), then east ¼ mile to the Polebridge store. Turn left and go ¾ mile to the cabin on the right. Most of the year you can drive up to the cabin. Potable water available April 1 thru November 31. Party size is limited to a maximum of 8.
<i>Ford/ Glacier View</i>	<b>\$50</b> available May 21-March 30	3 nights/ 7 days total per calendar year	Travel 44.4 miles north of Columbia Falls, MT on the North Fork Road (County Road #486). Turn right at the cabin sign on Road 318. Most of the time you can drive up to the cabin. The area between the North Fork Road and the Flathead River is closed to snowmobile use October 15 thru May 14. Potable water available April 1 thru November 31. Party size is limited to a maximum of 6.
<i>Hornet Lookout/ Glacier View</i>	<b>\$40</b> available June 15-Oct 31	3 nights/ 7 days total per calendar year	Travel 44 miles north of Columbia Falls, MT on the North Fork Road (County Road #486), then west on Whale Creek Road #318 for 3.4 miles to the junction of Hornet Mountain Road #9805. Proceed up Road #9805 for 5.4 miles to the trailhead, Trail #349. Most of the time you can drive to the trailhead. Hike approximately 1 mile from the trailhead to the lookout. In early to mid-June snow may be present, requiring parking at a lower elevation and over-the-snow-travel. Follow trailhead signs to Hornet Lookout. Party size is limited to a maximum of 2.
<i>Ninko/ Glacier View</i>	<b>\$50</b> available Dec 1-March 31	3 nights/ 7 days total per calendar year	Travel 44 miles north of Columbia Falls, MT on the North Fork Road (County Road #486), then walk/snowmobile/ski from parking area along the North Fork Road 11 miles west on Whale Creek Road #318 to the cabin sign. Party size is limited to a maximum of 6.
<i>Schnaus/ Glacier View</i>	<b>\$65</b> available year long	3 nights/ 7 days total per calendar year	Travel 41.1 miles north of Columbia Falls, MT on the North Fork Road (County Road #486) to the cabin sign at Sondreson Access Road #10372. Turn east on Road #10372 and follow the cabin signs for ¼ mile to the cabin. Most of the time you can drive to the cabin. Party size is limited to a maximum of 12.
<i>Wurtz/ Glacier View</i>	<b>\$75</b> available year long	3 nights/ 7 days total per calendar year	Travel 46 miles north of Columbia Falls, MT on the North Fork Road (County Road #486). The North Fork Road is intermittently plowed north of Polebridge. 4wd and /or chains are suggested for winter driving. Party size is limited to a maximum of 12.
<i>Anna Creek/ Hungry Horse</i>	<b>\$75</b> Jun 1-Oct 31 Dec 1 - Mar 31	3 nights/ 7 days total per calendar year	Travel 30 miles south of Hungry Horse, MT on Forest Service Road #895. Cross Hungry Horse Dam and continue south on the west side of Hungry Horse Reservoir. The cabin is located on the west side of the road between mile marker 28 and 29. There is a short driveway with a gate. Close the gate behind you as you continue to the cabin. Party size is limited to 15.
<i>Challenge/ Hungry Horse</i>	<b>\$50</b> available Dec 1-March 31	3 nights/ 7 days total per calendar year	Travel 51 miles east of Hungry Horse, MT on US Highway 2, then 6.4 miles south of Skyland Road #569. Snowmobile/ski to cabin along groomed snowmobile trail from parking area on Hwy 2. Party size is limited to maximum of 5.
<i>Zips Place/ Hungry Horse</i>	<b>\$70</b> available June 1-March 31	3 nights/ 7 days total per calendar year	Travel 48 miles east of Hungry Horse, MT on US Highway 2, then 1.6 miles south on a gravel county road following the cabin rental signs. In winter months cabin access is via snowmobile/ski/snowshoe from plowed parking area on the same county road approximately 1.5 miles from the cabin. Summer, (or when snow is melted and road is passable), you can drive to the cabin. Party size is limited to a maximum of 8.

Cabin/ Ranger District	Fees/Night Availability	Maximum Stay	Description
<i>Silvertip/ Spotted Bear</i>	<b>\$50</b> available July 1-Labor Day	14 nights per visit	Travel 53 miles south of Hungry Horse, MT on the East Side Reservoir Road #38 to the Spotted Bear River Road #568. Go 14.5 miles east on Spotted Bear River Road #568. Park at the trailhead and hike or ride 1.5 miles south on Trail #83. Go past trails #42 and #89. The cabin is just south of the Trail #89 intersection. Party size is limited to a maximum of 8.
<i>Mission Lookout/ Swan Lake</i>	<b>\$45</b> available May 15-Oct 20	7 nights per visit	Travel 3.8 miles south of Swan Lake, MT on Hwy 83. Turn west on Porcupine Creek Road #10229 and go 2.2 miles. Turn right onto FS Road #9803. Travel 1.3 miles to the gate. Gate and cabin have the same lock combination. No camp trailers or towed vehicles allowed. RVs must park in the pullout at the gate. Because the lookout is a tower type, children under 12 years old are not recommended. Party size is limited to a maximum of 4. There is no potable water and no heat. Propane cooktop only.
<i>Old Condon Ranger Station/ Swan Lake</i>	<b>\$85</b> available year long	7 nights per visit	Travel 25.3 miles south of Swan Lake, MT on Hwy 83. Turn east onto Condon Loop Road #124, located between mile posts 46 and 47. Follow the "Old Condon" arrows for 0.7 miles. The driveway is on the right. It has indoor plumbing with; flush toilet and kitchen facilities. Road is plowed to the cabin in the winter. Party size is limited to a maximum of 8. There is propane heat.
<i>Owl Creek/ Swan Lake</i>	<b>\$50</b> available year long * <b>\$20</b> for corral May - November	7 nights per visit	Travel 70 miles north of Missoula or 7.5 miles south of Condon, MT on Montana Hwy 83. Turn east onto Holland Lake Road #44. Go 2.5 miles, and turn right onto Road 44A and cross the bridge. Go 0.5 miles and turn right onto FS Road #10121 to the Owl Creek Packer Camp. Cabin is located at the Packer Camp. Corral holds up to 12 horses. Must bring own drinking water mid-November through mid-May. Road is plowed to the cabin in the winter. Party size is limited to a maximum of 4. There is propane heat.
<i>Swan Guard Station/ Swan Lake</i>	<b>\$70</b> available year long	7 nights per visit	Travel 2.1 miles south of Swan Lake, MT on Hwy 83. Look for the cabin sign on the right. Turn west onto the driveway. The building to the north with the porch is the rental cabin. Water is available by hand pump located outside the cabin during summer months only. The cabin has propane heat. Road is plowed to the cabin in the winter. Party size is limited to a maximum of 9.
<i>Star Meadow/ Tally Lake</i>	<b>\$75</b> available year long	7 nights/visit 7 nights/month	Travel 11 miles northwest of Whitefish, MT on US 93 to the Farm to Market Road. Turn south onto the Farm to Market Road and go 1.7 miles to the Star Meadows Road #539 on the right. Follow the Star Meadows Road #539 for 14.8 miles to the cabin. Road is paved to the cabin. For an additional \$5/night/unit, you can park camper trailers and tents. Large field accompanies cabin. All electric facility. Water is seasonal, (April thru November). Has outdoor fire area. Party size is limited to 6 maximum cabin / 4 bunk house.

**Water Safety:** It is recommended that you boil water taken from springs or creeks for 3 to 5 minutes to make it safe to drink. Boiling will destroy organisms carrying waterborne disease. Some cabins have potable water, others do not. Bring your own drinking water.

**Wildlife Safety:** Be "Bear Aware" in how you store your food. Do not leave coolers, food, or drinks outside.

**Firewood:** Firewood is provided for indoor heat ONLY during winter months. You are welcome to gather wood for a campfire or bring your own.

**Equipment and Supplies Needed For Your Stay:** Bring bedding, food, and recreation equipment.

**Winter Access:** 4-wheel drive vehicles are recommended during the winter.

**Garbage:** "Pack-it-in Pack-it-out" only. No exceptions! Thank you for your cooperation.

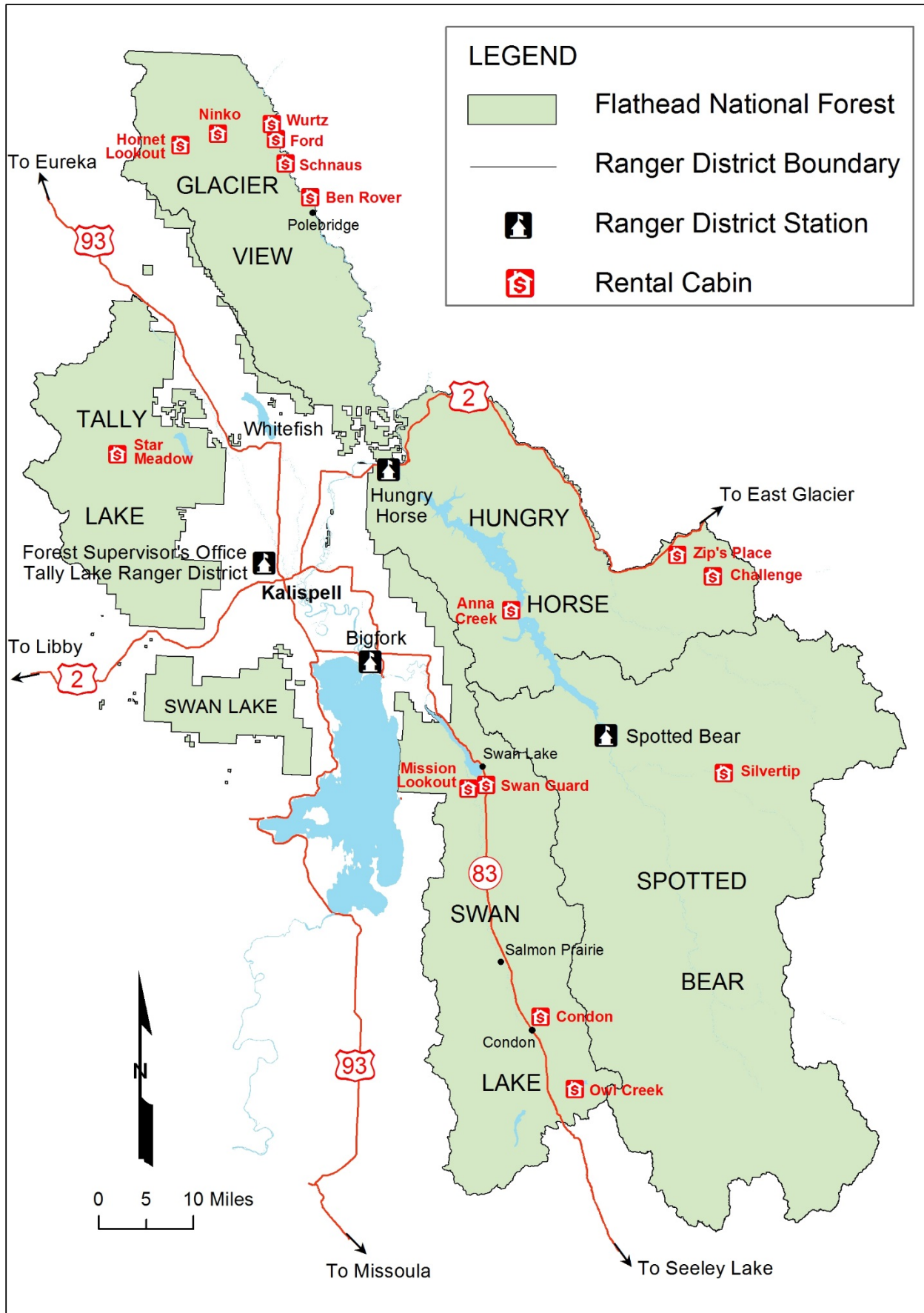
**Dogs and/or Livestock:** Allowed at some cabins. See last line in the table below.





Flathead National Forest  
650 Wolfpack Way  
Kalispell, MT  
(406)-758-5204  
[www.fs.usda.gov/flathead](http://www.fs.usda.gov/flathead)

## Amenities Listed by Cabin

X = Amenities Available	Ben Rover	Ford	Hornet Lookout	Ninko	Schnaus	Wurtz	Anna Creek	Challenge	Zip's Place	Silvertip	Mission Lookout	Old Condon Ranger Station	Owl Creek	Swan Guard Station	Star Meadow
Electric Stove/Oven									X				X	X	X
Propane Stove/Oven	X	X	Portable stove	X	X	X	X	X		X	Cooktop	X			
Electric Refrigerator									X			X	X	X	X
Electric Lights									X			X	X	X	X
Propane Lights	X	X	Lantern	X	X	X	X	X		X					
Propane Heater	X	X			X	X	X		X			X	X	X	
Woodstove Heater	X		X	X	X	X		X		X					Electric heat
Firewood 10/ 1 –5/ 1	X			X	X	X		X							
Pots / Pans	X	X	X	X	X	X	X	X	X	X	X	X	X	X	X
Utensils / Cutlery	X	X	X	X	X	X	X	X	X	X	X	X	X	X	X
Dishes	X	X	X	X	X	X	X	X	X	X	X	X	X	X	X
Cleaning Items	X	X	X	X	X	X	X	X	X	X	X	X	X	X	X
Outhouse	X	X	X	X	X	X	X	X	X	X	X	Indoor	X	X	X
Water Hand pump	4/1-11/30	4/1-11/30							6/1-11/30	6/1-11/30		Indoor plumbing	5/20-11/15	Seasonal	Seasonal
Beds	8	6	2 cots	6	12	12	12	5	8	6 beds 2 cots	1 bed 2 cots	6 beds 1 futon	4 beds 1 futon	7 beds 1 futon	6 cabin 4 bunk
Maximum Party Size	8	6	2	6	12	12	15	5	8	8	4	8	4	9	10
Allowed: Dogs Livestock			Dogs	Dogs			Dogs	Dogs	Dogs	Dogs Livestock		Dogs	Horses/ Mules	Dogs	Dogs Livestock

# Cabin Rental Vicinity Map



LEGEND	
	Flathead National Forest
	Ranger District Boundary
	Ranger District Station
	Rental Cabin