

# LAKE TAHOE BASIN MANAGEMENT UNIT

## CAMPING PROHIBITIONS

### EXHIBIT B

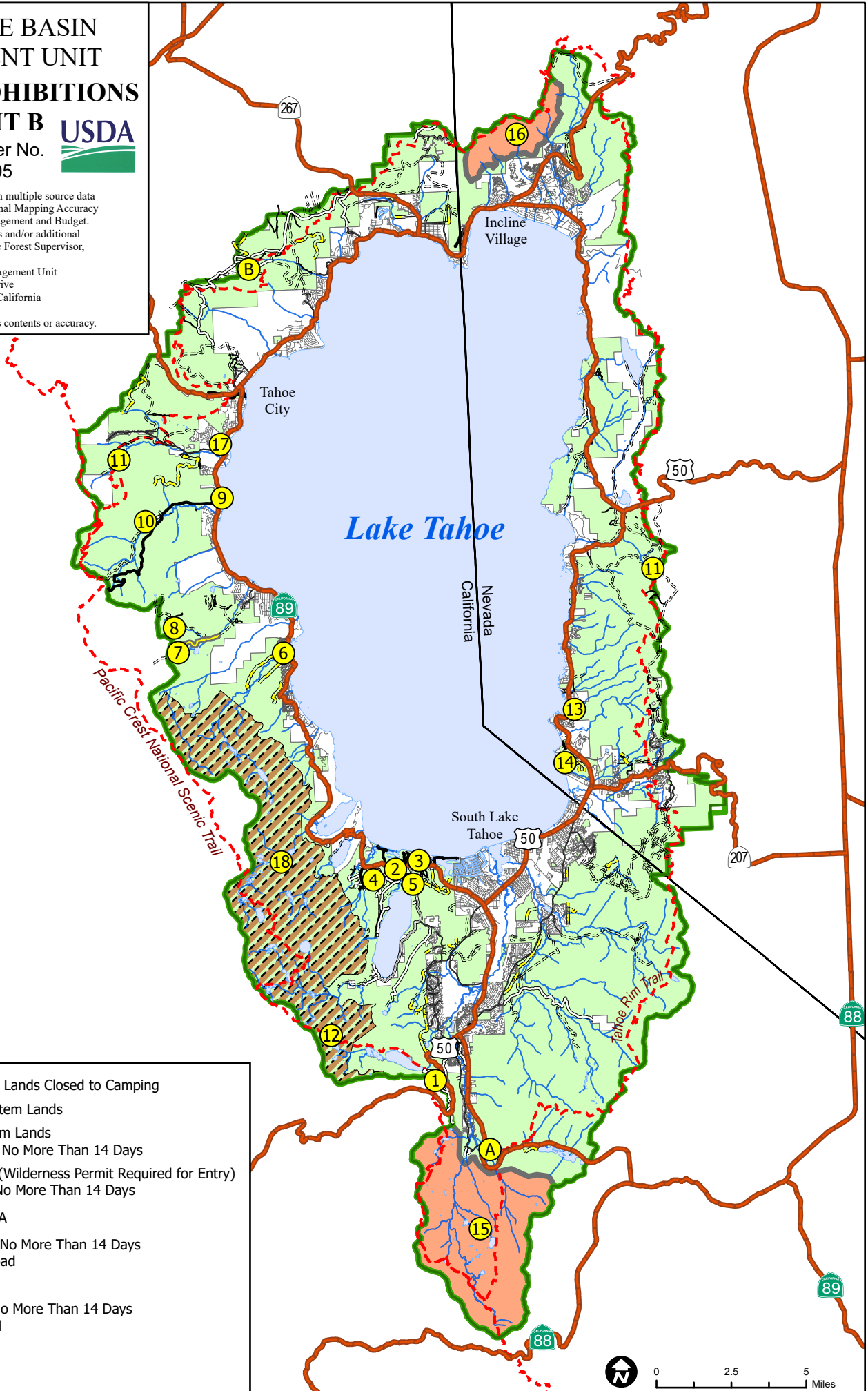
Forest Order No. 19-24-05



Original data was compiled from multiple source data and may not meet the U.S. National Mapping Accuracy Standard of the Office of Management and Budget. For specific data source dates and/or additional digital information contact the Forest Supervisor,

Lake Tahoe Basin Management Unit  
35 College Drive  
South Lake Tahoe, California

This map has no warranties to its contents or accuracy.



- National Forest System Lands Closed to Camping
- Non Forest Service System Lands
- National Forest System Lands Open To Camping for No More Than 14 Days
- Desolation Wilderness (Wilderness Permit Required for Entry) Open to Camping For No More Than 14 Days
- Areas Listed in Exhibit A
- Open to Camping for No More Than 14 Days Within 300 Feet of Road
- Highways
- Open to Camping for No More Than 14 Days Within 300 Feet of Trail
- Local Road
- LTBMU Boundary

