

SIX RIVERS NATIONAL FOREST
Forest Order No. 24-10-05
Klamath River Use Restriction

Pursuant to 16 U.S.C. § 551 and 36 C.F.R. § 261.50(a), and to provide for public safety, the following acts are prohibited within the Orleans Ranger District of the Six Rivers National Forest. This Order is effective from August 15, 2024, through August 24, 2024.

1. Launching watercraft in the following areas along the Klamath River, as shown on the attached map.
 - a. Dolans Bar River Access Area.
 - b. Orleans River Access Area
 - c. Ullathorne River Access Area

36 C.F.R. § 261.58(r).

2. Possessing or operating a motorboat along the Klamath River beginning at the Dolans Bar River Access Area and continuing generally southeast to the Ullathorne River Access Area, including the Orleans Bar River Access Area, as shown on the attached map. 36 C.F.R. § 261.58(n).

Pursuant to 36 C.F.R. § 261.50(e), the following persons are exempt from this Order:

1. Persons with Forest Service Permit No. FS-7700-48 (Permit for Use of Roads, Trails, or Areas Restricted by Regulation or Order), specifically exempting them from this Order.
2. Any Federal, State or local officer, or member of an organized rescue or fire fighting force in the performance of an official duty.
3. Members of the Karuk Tribe and persons invited by members of the Karuk Tribe to participate in ceremonial activities.

These prohibitions are in addition to the general prohibitions in 36 C.F.R. Part 261, Subpart A.

A violation of these prohibitions is punishable by a fine or not more than \$5,000 for an individual or \$10,000 for an organization or imprisonment for not more than six months, or both. 16 U.S.C. § 551 and 18 U.S.C. §§ 3559, 3571, and 3581.

Executed in Eureka, California this 25th day of June, 2024.

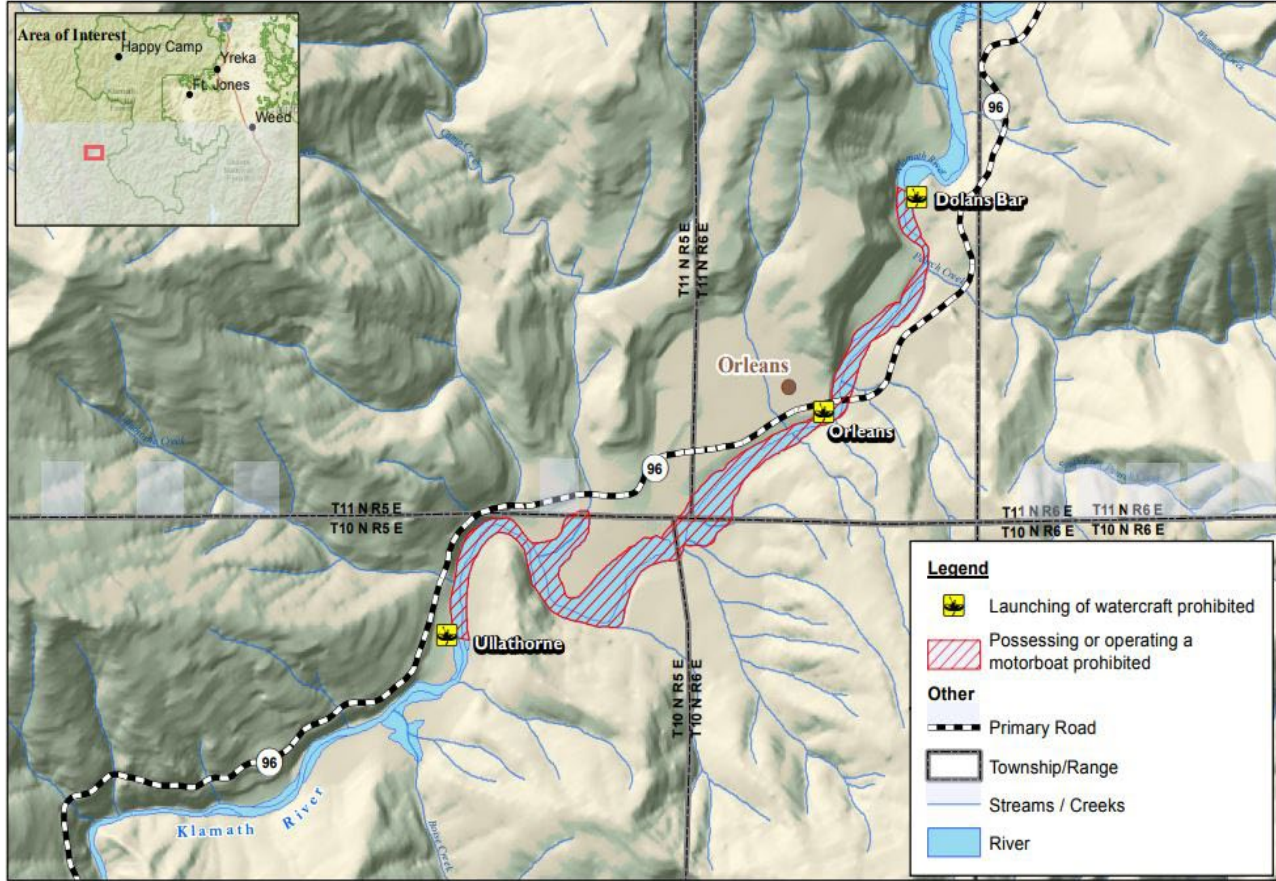
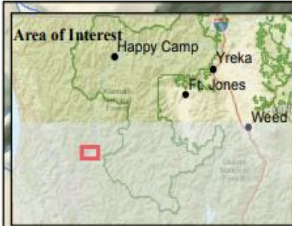
Ted O. McArthur
Forest Supervisor
Six Rivers National Forest



Klamath River Use Restriction Map

Six Rivers National Forest

Forest Order No. 24-10-05



Legend

- Launching of watercraft prohibited
- Possessing or operating a motorboat prohibited

Other

- Primary Road
- Township/Range
- Streams / Creeks
- River

