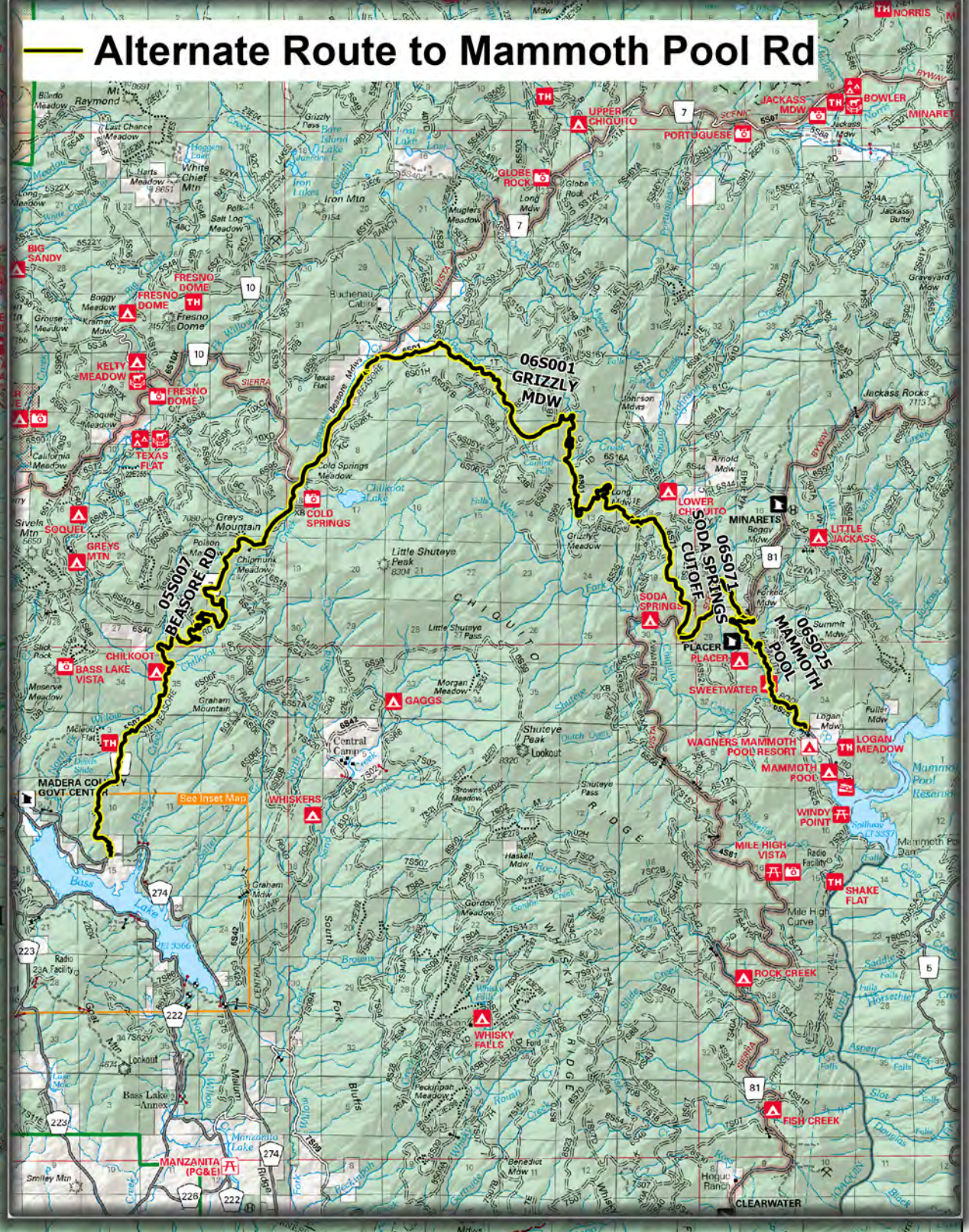
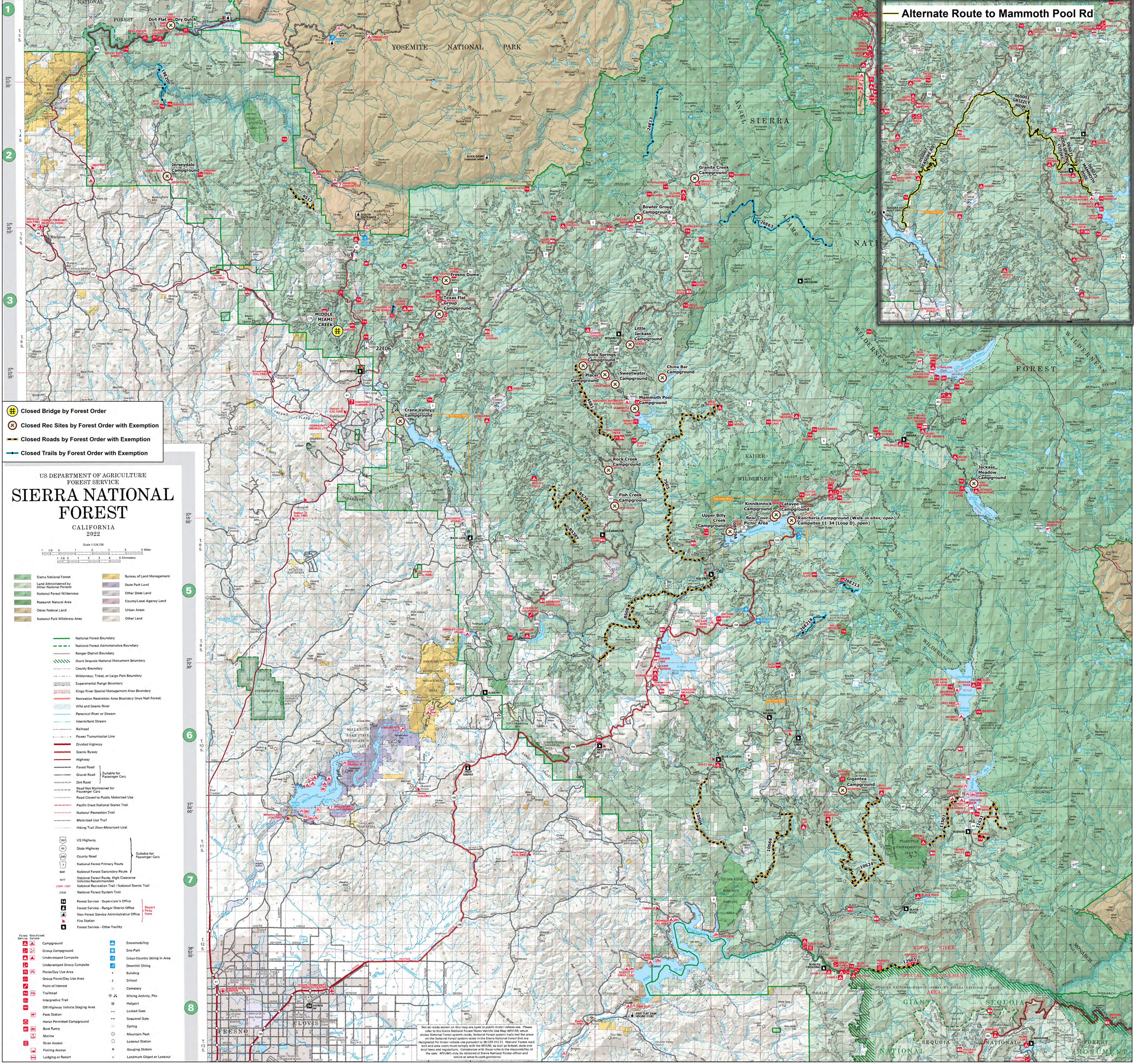
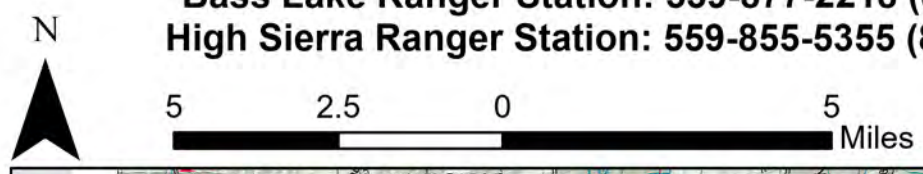


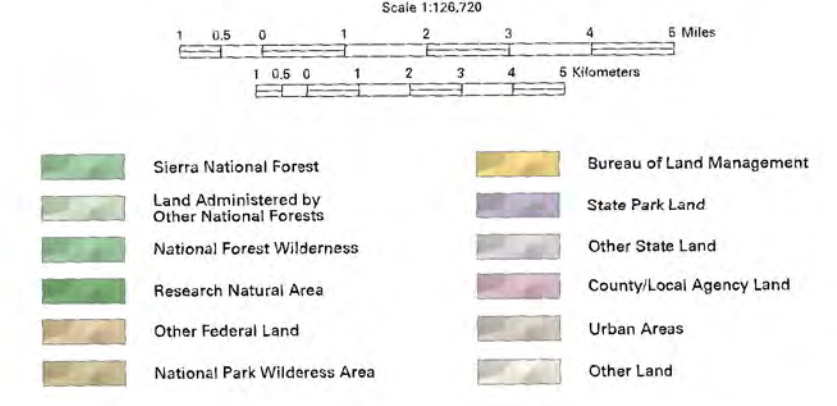
Forest Order No. 05-15-00-24-10
USDA Forest Service
Sierra National Forest
Recreation Site, Road and Trail Closure
Exhibit B

For more information contact:
 Bass Lake Ranger Station: 559-877-2218 (8 am - 4:30 pm, M-F)
 High Sierra Ranger Station: 559-855-5355 (8 am - 4:30 pm, daily)



- # Closed Bridge by Forest Order
- X Closed Rec Sites by Forest Order with Exemption
- Closed Roads by Forest Order with Exemption
- Closed Trails by Forest Order with Exemption

US DEPARTMENT OF AGRICULTURE
 FOREST SERVICE
SIERRA NATIONAL FOREST
 CALIFORNIA
 2022



- | | |
|---|---|
| <ul style="list-style-type: none"> — National Forest Boundary - - - National Forest Administrative Boundary - - - Ranger District Boundary - - - Giant Sequoia National Monument Boundary - - - County Boundary - - - Wilderness, Tribal, or Large Park Boundary - - - Experimental Range Boundary - - - Kings River Special Management Area Boundary - - - Recreation Restriction Area Boundary (Inyo Natl Forest) — Wild and Scenic River — Perennial River or Stream — Intermittent Stream — Railroad — Power Transmission Line — Divided Highway — Scenic Byway — Highway — Paved Road — Gravel Road — Dirt Road — Road Not Maintained for Passenger Cars — Road Closed to Public Motorized Use — Pacific Crest National Scenic Trail — National Recreation Trail — Motorized Use Trail — Hiking Trail (Non-Motorized Use) | <ul style="list-style-type: none"> — Bureau of Land Management — State Park Land — Other State Land — County/Local Agency Land — Urban Areas — Other Land |
|---|---|
-
- | | |
|---|---|
| <ul style="list-style-type: none"> — US Highway — State Highway — County Road — National Forest Primary Route — National Forest Secondary Route — National Forest Route, High Clearance Vehicles Recommended — National Recreation Trail / National Scenic Trail — National Forest System Trail | <ul style="list-style-type: none"> — Forest Service - Supervisor's Office — Forest Service - Ranger District Office — Non-Forest Service Administrative Office — Fire Station — Forest Service - Other Facility |
|---|---|
-
- | | |
|--|--|
| <ul style="list-style-type: none"> A Campground A Group Campground A Undeveloped Campsite A Undeveloped Group Campsite A Picnic/Day Use Area A Group Picnic/Day Use Area A Point of Interest A Trailhead A Interpretive Trail A Off-Highway Vehicle Staging Area A Pack Station A Horse Permit Campground A Boat Ramp A Marina A River Access A Fishing Access A Lodging or Resort | <ul style="list-style-type: none"> A Snowmobiling A Sno-Park A Cross-Country Skiing in Area A Downhill Skiing A Building A School A Cemetery A Mining Activity, Plus A Helipoint A Locked Gate A Seasonal Gate A Spring A Mountain Peak A Lookout Station A Gauging Station A Landmark Object or Lookout |
|--|--|

Not all roads shown on this map are open to public motor vehicle use. Please refer to the Sierra National Forest Motor Vehicle Use Map (MVUM), which shows National Forest system roads, National Forest system trails and the area on the National Forest system lands in the Sierra National Forest that are designated for motor vehicle use pursuant to 36 CFR 212.11. National Forest road, trail and area uses most comply with the MVUM, as well as federal, state and local laws and regulations. Compliance with these rules is the responsibility of the user. MVUM's may be viewed at Sierra National Forest office and online at www.fs.fed.gov