



**U.S. Department of Agriculture  
U.S. Forest Service  
Apache–Sitgreaves National Forests  
Alpine, Black Mesa, Lakeside, & Springerville Ranger Districts**

**RESTRICTION OF MOTORIZED VEHICLE ENTRY AND USE WITHIN  
DESIGNATED WILDLIFE QUIET AREAS**

**PROHIBITIONS**

Pursuant to 16 U.S.C. § 551 and 36 C.F.R. § 261.50(a), the following acts are prohibited on National Forest System (NFS) lands within the Apache–Sitgreaves National Forests, as described below and shown on the attached maps incorporated into this Order as Exhibits A1–A10 (the “Described Areas”):

1. Operating a motorized vehicle within the Described Areas during the closure duration specified for each Described Area. 36 C.F.R. § 261.53(b).

**DEFINITIONS**

1. For the purpose of this Order, non-motorized bicycles are permitted.

**EXEMPTIONS**

Pursuant to 36 C.F.R. § 261.50(e), the following persons are exempt from this Order:

1. Persons with Forest Service Permit No. FS-7700-48 (Permit for Use of Roads, Trails, or Areas Restricted by Regulation or Order), specifically exempting them from this Order or a written determination by a Forest Service authorized officer that a permit is not required under 36 C.F.R. § 251.50(e)(1) or (2).

2. Any Federal, State, or Local Officer, or member of an organized rescue or firefighting resource in the performance of an official duty.

## **DESCRIBED AREAS**

Roads comprising Described Area boundaries remain open for travel, unless otherwise closed. All distances and coordinates are approximate.

### **Alpine Ranger District: Hulsey Bench WQA — Exhibit A1**

Closure Duration: Year-Round

All National Forest System lands within the boundary beginning at the intersection of National Forest System Road (FR) 8056 and FR 8057A, then following FR 8056 in a northwesterly direction 0.75 miles to 109.1577480°W 33.9340540°N, then following a westerly direction 0.33 miles to 109.1636172°W 33.9341122°N, then following a southwesterly direction 0.1 miles to 109.1652077°W 33.9332006°N, then following a southeasterly direction 0.1 miles to 109.1645915°W 33.9318911°N, then following the Hulsey–Milk–Watts Canyon rim in a southwesterly then overall northerly direction 8.5 miles to 109.1583601°W 33.9814977°N, then following a northerly direction downhill 0.17 miles to the confluence of Watts Creek and an intermittent drainage (109.1568423°W 33.9835566°N), then following the north fork of Watts Creek in an east-southeasterly direction 1.7 miles to its intersection with Welch Spring, then following in a southwesterly direction 300 feet to the Escudilla Wilderness boundary, then following the Escudilla Wilderness boundary in an overall southerly direction 3.8 miles to its intersection with the fence line at 109.1280778°W 33.9340930°N, then following the fence line in a northwesterly direction for 0.42 miles to its intersection with FR 8057A, then following FR 8057A in an easterly then southerly direction 1.2 miles to the point of beginning at the intersection of FR 8056 and FR 8057A, as depicted in Exhibit A1 of this Order.

### **Alpine Ranger District: Middle Mountain WQA — Exhibit A2**

Closure Duration: August 15 through December 31

All National Forest System lands within the boundary beginning at the intersection of National Forest System Road (FR) 37 and FR 37B, then following FR 37 in an overall easterly direction 5.9 miles to its intersection with FR 37C, then following FR 37C in a southerly direction 2.8 miles to its intersection with FR 26, then following FR 26 in a northwesterly direction 1.75 miles to its intersection with FR 37B, then following FR 37B in a northerly direction 0.6 miles to its intersection with FR 8770, then following FR 8770 in an easterly direction 0.25 miles to 109.2676523°W 33.7290623°N, then following a northwesterly direction 0.1 miles to

109.2685636°W 33.7302646°N, then following a westerly direction 0.1 miles to the intersection of FR 37B and FR 8302, then following FR 37B in a northerly direction 3.4 miles to the point of beginning at the intersection of FR 37 and 37B, as depicted in Exhibit A2 of this Order.

**Alpine Ranger District: Open Draw WQA — Exhibit A3**

Closure Duration: May 1 through August 15

All National Forest System lands within the boundary beginning at the Apache Ranger District boundary where two fence lines intersect at 109.3552889°W 33.8438550°N, then following the fence line in an easterly direction 2.5 miles to 109.3152044°W 33.8370238°N on the western rim of the North Fork of the East Fork of the Black River (rim), then following the rim in a southerly direction 0.35 miles to 109.3141710°W 33.8327117°N, then following a southeasterly direction 0.25 miles down the center of the draw to 109.3101731°W 33.8316087°N, then following in a southwesterly direction 0.15 miles to 109.3118617°W 33.8300594°N at the confluence of Open Draw Creek and an intermittent tributary, then following the intermittent tributary in a southerly direction 0.1 miles to 109.3115344°W 33.8288180°N, then following a northeasterly direction 0.2 miles to 109.3082614°W 33.8298214°N, then following the rim in a southeasterly then southwesterly direction then westerly direction 2.8 miles to its intersection with National Forest System Road (FR) FR 582E, then following FR 582E in a southwesterly-westerly direction 1.7 miles to its intersection with FR 582, then following FR 582 in an easterly then northerly direction 1 mile to its intersection with FR 8735, then following the broad ridge (north of FR 8735) in a northwesterly direction 0.85 miles to its intersection with FR 8720A, then following FR 8720A in a westerly direction 0.9 miles to its intersection with the Alpine Ranger District boundary at 109.3632539°W 33.8368399°N, then following the Alpine Ranger District boundary in a northeasterly direction 0.7 miles to the point of beginning at the intersection of the Alpine RD boundary and the eastward fence line, as depicted in Exhibit A3 of this Order.

**Alpine Ranger District: Upper Coyote WQA — Exhibit A4**

Closure Duration: Year-round

All National Forest System lands within the boundary beginning at the intersection of National Forest System Road (FR) 276 and FR 8083, then following FR 276 in a northerly direction 0.9 miles to its intersection with FR 403R1, then following FR 403R1 in an easterly direction 1 mile to its intersection with FR 403R, then following FR 403R in a southeasterly direction 0.35 miles to its intersection with the fence line, then following the fence line in a southerly direction 0.9 miles to its intersection with FR 8869A, then following FR 8869A in a westerly direction 0.7 miles to its intersection with FR 8869, then following FR 8869 in a westerly direction 1.15 miles to its intersection with FR 8083, then following FR 8083 in a northerly direction 115 feet to the

point of beginning at the intersection of FR 276 and FR 8083, as depicted in Exhibit A4 of this Order.

**Black Mesa Ranger District: Bear Springs WQA — Exhibit A5**

Closure Duration: Year-round

All National Forest System lands within the boundary beginning at the intersection of National Forest System Road (FR) 300 (Rim Road) and FR 146, then following FR 146 in a northerly direction 2 miles to its intersection with FR 124, then following FR 124 in an easterly direction 1.8 miles to its intersection with FR 145, then following FR 145 in a southeasterly direction 2.4 miles to its intersection with FR 107, then following FR 107 in a southerly direction 225 feet to its intersection with FR 300, then following FR 300 in a westerly direction 4.5 miles to the point of beginning at the intersection of FR 300 and FR 146, as depicted in Exhibit A5 of this Order.

FR 9867D remains open to access private property.

**Black Mesa Ranger District: Beaver Turkey Ridge WQA — Exhibit A6**

Closure Duration: Year-round

All National Forest System lands within the boundary beginning at the confluence of Turkey Creek and Beaver Creek, then following Beaver Creek in an overall southerly direction 5.5 miles to 111.0500805°W 34.3853741°N, then heading in a westerly direction 0.25 miles to 111.0531764°W 34.3850632°N, then heading in a southerly direction 0.1 miles to the intersection of National Forest Road System (FR) 92J1, then following FR 92J1 in a southerly direction 0.2 miles to its intersection with FR 300, then following FR 300 in a westerly direction 1 mile to its intersection with the powerline, then following in a northerly direction 0.1 miles to 111.0682037°W 34.3836037°N, then following the Turkey Creek drainage in a north-northeasterly direction 5.7 miles to the point of beginning at the confluence of Turkey Creek and Beaver Creek, as depicted in Exhibit A6 of this Order.

**Black Mesa Ranger District: Willow Springs / Horse Trap WQA — Exhibit A7**

Closure Duration: Year-round

All National Forest System lands within the boundary beginning at the intersection of Arizona State Highway (AZ) 260 and Trail 535 (decommissioned National Forest System Road (FR) 9505), then following AZ 260 in a northeasterly direction 2.3 miles to its intersection with the western edge of the powerline easement, then following the western edge of the powerline easement in a northerly direction 0.6 miles to its intersection with FR 237, then following FR 237 in a northerly direction 0.4 miles to its intersection with the western edge of the powerline

easement, then following the western edge of the powerline easement 0.3 miles to its intersection with FR 9509D, then following FR 9509D in a northwesterly direction 0.5 miles to its intersection with Horse Trap Creek, then following Horse Trap Creek in a northwesterly direction 3.2 miles to 110.8580926°W 34.3764436°N, then following a westerly direction 0.15 miles uphill to the intersection of FR 9506B at the southern rim of Horse Trap Canyon, then following the rim in a westerly then southerly direction 0.6 miles to 110.8650875°W 34.3736757°N, then following a westerly direction 0.2 miles across the unnamed drainage to remain on the southern rim of Horse Trap Canyon at 110.8674551°W 34.3743592°N, then following the contiguous rim of Horse Trap – Chevelon – Willow Springs canyons in a westerly then southerly direction 4 miles to its intersection with FR 9504A, then following a westerly direction 0.15 miles across Willow Springs Canyon to 110.8816672°W 34.3432579°N, then following the contiguous rim of Willow Springs – Woods Canyons in a northerly then southerly direction 4 miles to the intermittent tributary of Wood’s Creek at 110.9067946°W 34.3273938°N, then following the intermittent tributary in a southerly direction 0.4 miles to its terminus at 110.9065769°W 34.3220995°N, then following the northeastern edge of the broad valley containing seasonal wetlands in a southeasterly direction 1.5 miles to the intersection of Trail 502 (FR 235) and FR 149D, then following FR149D in a southerly direction 0.5 miles to its intersection with FR 149, then following FR 149 in a northeasterly direction 0.7 miles to its intersection with the Willow Springs Lake shoreline on the north side of the boat ramp, then following the Willow Springs Lake shoreline in a northerly direction 0.25 miles to its intersection with the Willow Springs Lake dam, then following the dam in a northeasterly direction 0.1 miles to its intersection with Trail 535 (FR 9505), then following Trail 535 in a southeasterly direction 2 miles to the point of beginning at the intersection of Trail 535 and AZ 260, as depicted in Exhibit A7 of this Order.

**Black Mesa & Lakeside Ranger Districts: Cottonwood Seep WQA — Exhibit A8**

Closure Duration: Year-round

All National Forest System lands within the boundary beginning at the intersection of National Forest System Road (FR) 300 (Rim Road) and FR 141, then following FR 141 in an easterly direction 1.8 miles to its intersection with FR 139, then following FR 139 in a southerly then southeasterly direction 2.2 miles to its intersection with FR 9870K, then following FR 9870K in a southerly direction 1.5 miles to its intersection with FR 300, then following FR 300 in a west-northwesterly direction 5.2 miles to the point of beginning at the intersection of FR 300 and FR 141, as depicted in Exhibit A8 of this Order.

**Lakeside Ranger District: Woolhouse WQA — Exhibit A9**

Closure Duration: Year-round

All National Forest System lands within the boundary beginning at the intersection of United States Highway (US) 60 and the Navajo–Apache County Line, then following the Navajo–Apache County Line in a southerly direction 2.6 miles to 109.8489250°W 34.2459690°N, then following in a southwesterly direction 0.65 miles to 109.8407968°W 34.2392097°N, then following in a southerly direction 1 mile to Apache County Road (AP) 3144, then following AP 3144 in a southwesterly direction 0.5 miles to where it becomes Navajo County Road (NA) 45 (Porter Mountain Road), then following NA 45 in a southwesterly direction 5.6 miles to 0.1 miles east of the intersection of NA 45 and National Forest System Road (FR) 206A (109.9314430°W 34.2022759°N), then following in a northerly direction 0.25 miles to 109.9316677°W 34.2050999°N, then following in a westerly direction 115 feet to the intersection with FR 206A, then following FR 206A in a northerly direction 1 mile to its intersection with FR 9724Y, then following FR 9724Y in a northeasterly direction 3 miles to its intersection with FR 9724X, then following FR9724X in a northerly direction 2.3 miles to its intersection with the southern edge of the powerline easement (powerline), then following the powerline east 1.3 miles to the boundary of the Second Knoll Shooting Range (range), then following the range boundary south 0.15 miles to the southwest corner of the range, then following the range boundary in an easterly direction 0.4 miles to the southeast corner of the range, then following the range boundary in a northerly direction 0.3 miles to its intersection with the powerline, then following the powerline in a westerly direction 0.2 miles to its intersection with FR 206, then following FR 206 in a northerly direction 0.5 miles to US 60, then following US 60 in an easterly direction 5.55 miles to the point of beginning at the intersection of US 60 and the Navajo-Apache County Line, as depicted in Exhibit A9 of this Order.

**Springerville Ranger District: Saint Peter’s Dome WQA — Exhibit A10**

Closure Duration: Year-round

All National Forest System lands within the boundary beginning at the intersection of National Forest System Road (FR) 117 and FR 117A, then following FR 117 in an overall northerly direction 7.8 miles to its intersection with Apache County Road (AP) 1325, then following AP 3123 in a southeasterly direction 1.55 miles to its intersection with FR 8363, then following FR 8363 in a southwesterly direction 300 feet to 109.5357355°W 34.1490759°N then following a southerly direction 0.1 miles to its intersection with the northwest corner of Hall Ranch, then following the western and southern boundaries of Hall Ranch 1.3 miles to the southeastern corner of Hall Ranch at 109.5235377°W 34.1394943°N, then following an easterly direction 50 feet to its intersection with FR 8677, then following FR 8677 in an easterly direction 0.1 miles to its intersection with AP 1325, then following AP 1325 in an easterly then southerly direction 0.4 miles to its intersection with FR 117A, then following FR 117A in a southwesterly direction 5.2 miles to the point of beginning at the intersection of FR 117 and FR 117A, as depicted in Exhibit A10 of this Order.

## **PURPOSE**

The purpose of this Order is to reduce motorized disturbance in areas of core wildlife habitat.

## **IMPLEMENTATION**

1. This Order shall be in effect from June 10, 2024, at 5:00 pm through June 10, 2029, at 5:00 pm, unless rescinded.
2. A map identifying each of the Described Areas is attached and made part of this Order as Exhibits A1–A10. For a digital version of this Order and Exhibits, go to <https://www.fs.usda.gov/alerts/asnf/alerts-notice>.
3. Unless otherwise expressly defined in this Order, the terms used in this Order are defined by the regulations of the Secretary of Agriculture, 36 C.F.R. Chapter II, Parts 200-299. If there are terms in this Order that are not expressly defined in the Order or 36 C.F.R. Chapter II, Parts 200-299, their meaning is determined by their plain language definitions.
4. A violation of the above prohibitions is punishable as a Class B misdemeanor by a fine of not more than \$5,000 for individuals and \$10,000 for organizations, or by imprisonment for not more than six months, or both. 16 U.S.C. § 551; 18 U.S.C. §§ 3559, 3571, and 3581.
5. Contact the Apache–Sitgreaves National Forests Supervisor’s Office in Springerville, 928-333-6263; the Alpine Ranger District in Alpine, 928-339-5000; the Black Mesa Ranger District in Overgaard, 928-535-7300; the Lakeside Ranger District in Lakeside, 928-368-2100; or the Springerville Ranger District in Springerville, 928-333-6200 for more information about this Order.
6. This Order supersedes any previous Orders prohibiting the same or similar acts in the same Described Areas.

Signed and issued on June 6, 2024.

---

ROBERT LEVER

Forest Supervisor

Apache–Sitgreaves National Forests

**EXHIBIT B. Summary of Wildlife Quiet Area closures and durations described in this Order.**

<b>ASNF Ranger District</b>	<b>Wildlife Quiet Area</b>	<b>Closure Duration</b>
Alpine	Hulsey Bench	Year-round
Alpine	Middle Mountain	August 15 through December 31
Alpine	Open Draw	May 1 through August 15
Alpine	Upper Coyote	Year-round
Black Mesa	Bear Springs	Year-round
Black Mesa	Beaver Turkey Ridge	Year-round
Black Mesa	Willow Springs / Horse Trap	Year-round
Black Mesa & Lakeside	Cottonwood Seep	Year-round
Lakeside	Woolhouse	Year-round
Springerville	St Peters Dome	Year-round



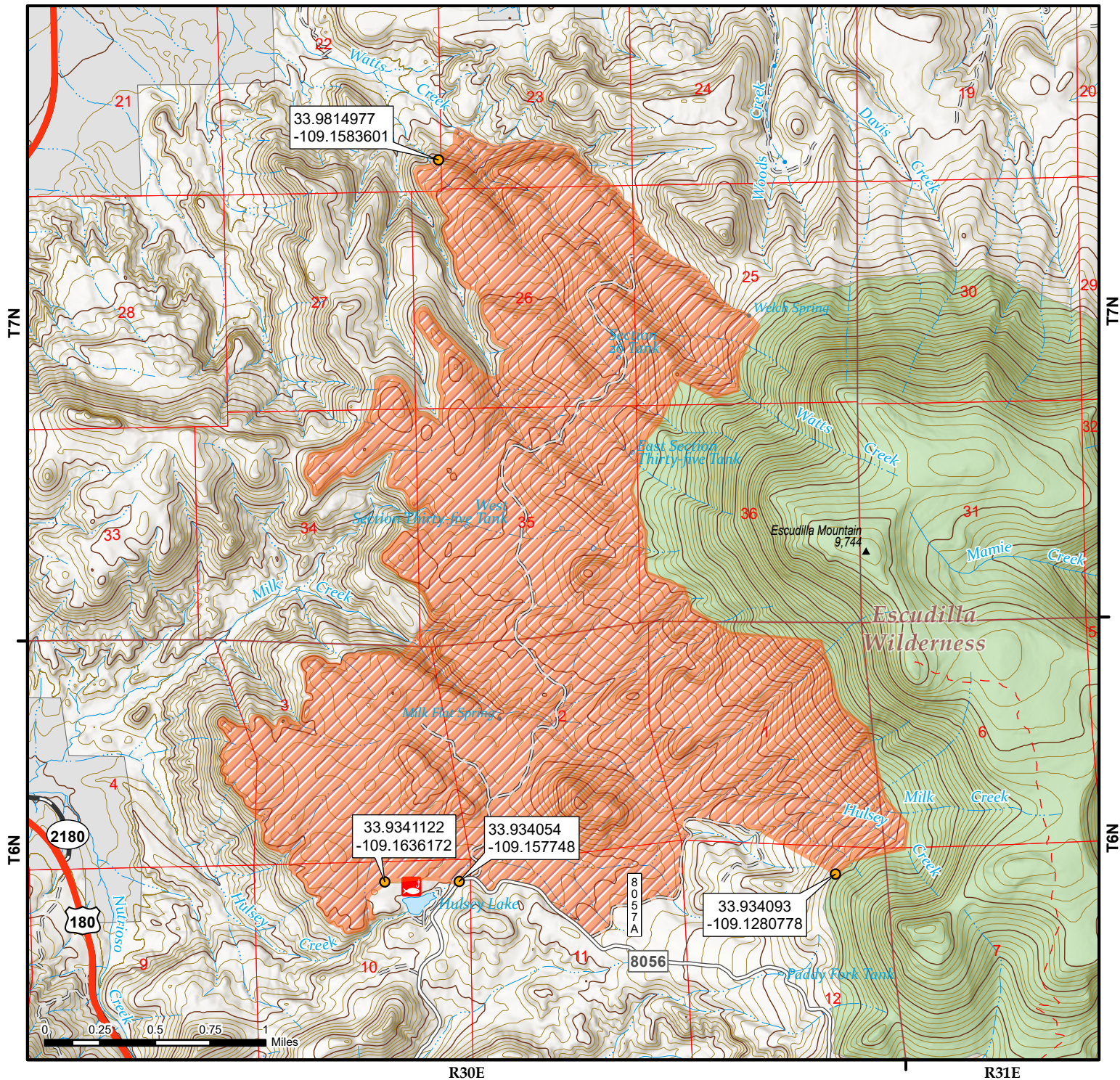


# Hulsey Bench Wildlife Quiet Area Closure

03-01-24-13

Exhibit: A1

Apache-Sitgreaves National Forests



### Forest Order Information

Order Number: 03-01-24-13  
Start Date: June 10, 2024  
End Date: June 10, 2029

### Disclaimer

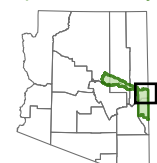
The USDA Forest Service makes no warranty, expressed or implied regarding the data displayed on this map, and reserves the right to correct, update, modify, or replace this information without notification.

### Legend

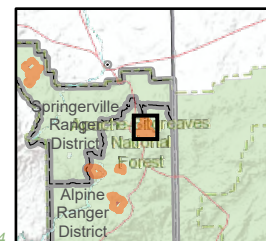
- Described Point
- Described Area
- National Forest Boundary
- Ranger District Boundary
- Wilderness



**ARIZONA**  
Apache County



Map Created on 6/4/2024



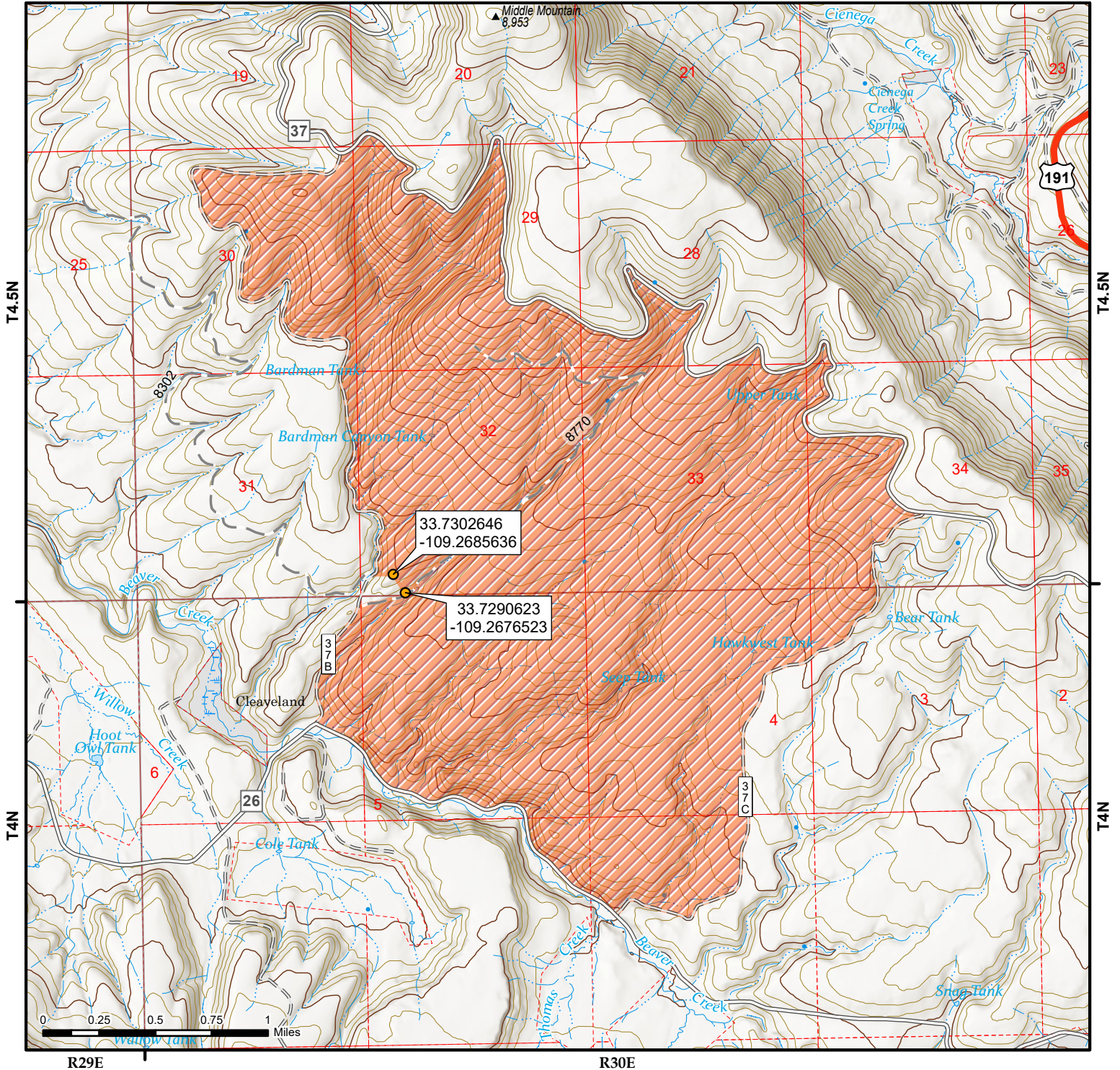


# Middle Mountain Wildlife Quiet Area Closure

03-01-24-13

Exhibit: A2

Apache-Sitgreaves National Forests



### Forest Order Information

Order Number: 03-01-24-13  
Start Date: June 10, 2024  
End Date: June 10, 2029

### Disclaimer

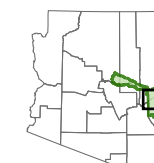
The USDA Forest Service makes no warranty, expressed or implied regarding the data displayed on this map, and reserves the right to correct, update, modify, or replace this information without notification.

### Legend

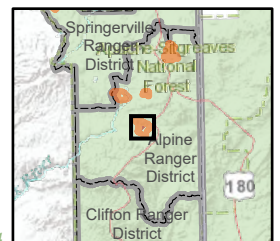
- Described Point
- Described Area
- National Forest Boundary
- Ranger District Boundary
- Wilderness



**ARIZONA**  
Greenlee County



Map Created on 6/4/2024



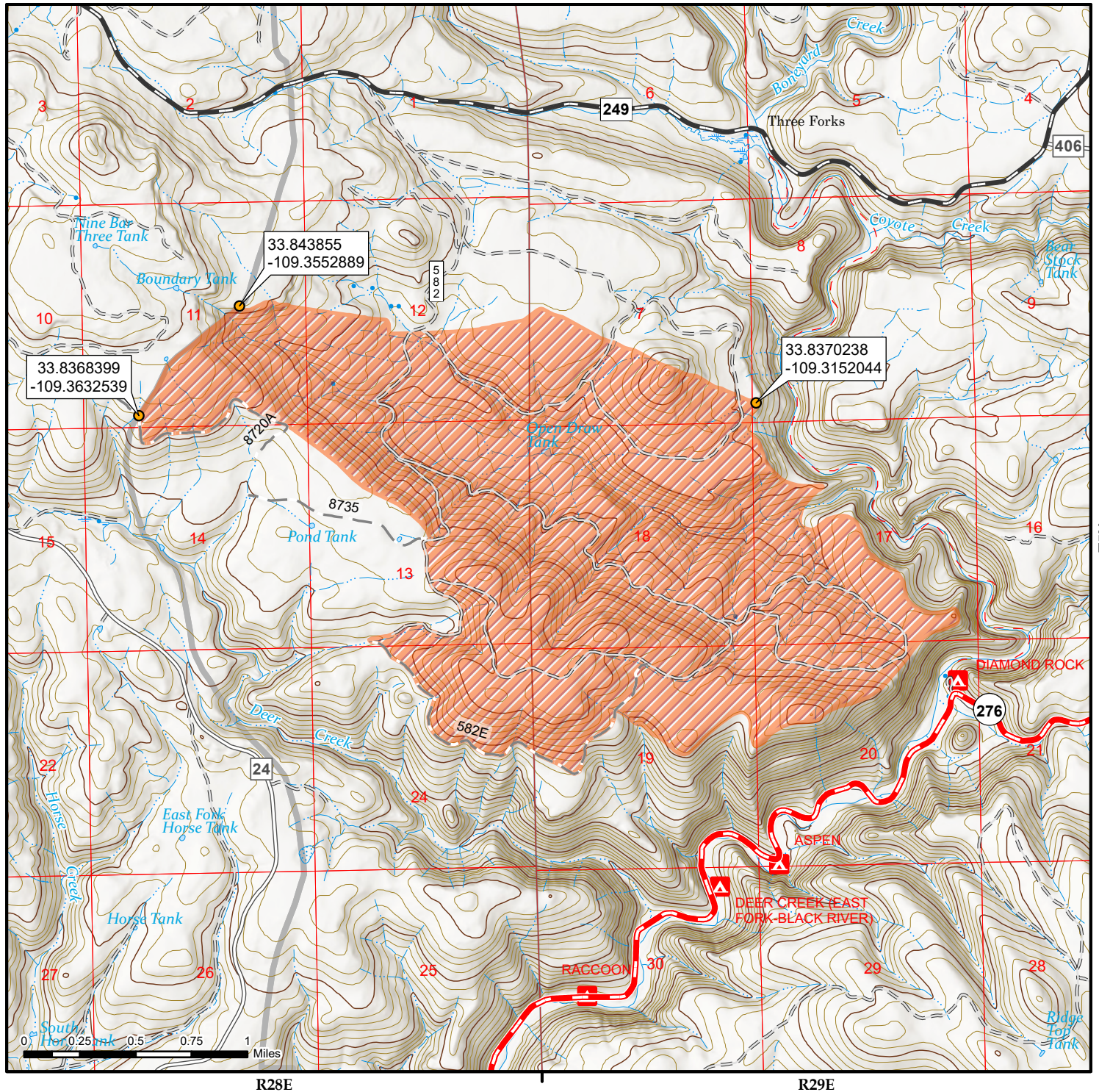


# Open Draw Wildlife Quiet Area Closure

03-01-24-13

Exhibit: A3

Apache-Sitgreaves National Forests



### Forest Order Information

Order Number: 03-01-24-13  
Start Date: June 10, 2024  
End Date: June 10, 2029

### Disclaimer

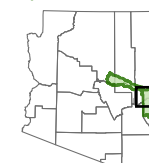
The USDA Forest Service makes no warranty, expressed or implied regarding the data displayed on this map, and reserves the right to correct, update, modify, or replace this information without notification.

### Legend

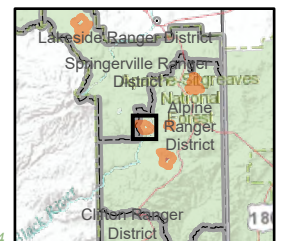
- Described Point
- Described Area
- National Forest Boundary
- Ranger District Boundary
- Wilderness



### ARIZONA Apache County



Map Created on 6/4/2024



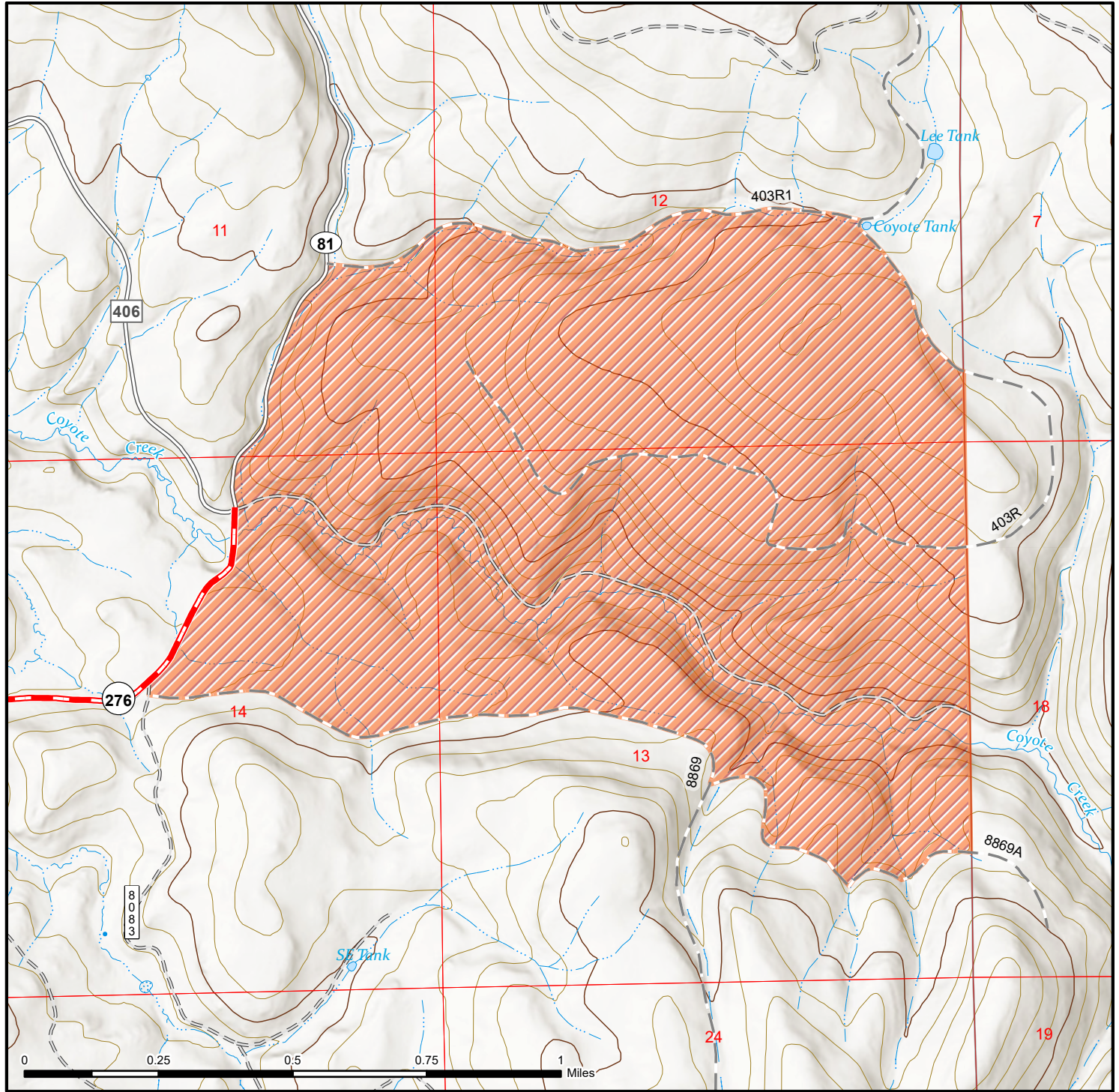


# Upper Coyote Wildlife Quiet Area Closure

03-01-24-13

Exhibit: A4

Apache-Sitgreaves National Forests



### Forest Order Information

Order Number: 03-01-24-13  
 Start Date: June 10, 2024  
 End Date: June 10, 2029

### Disclaimer

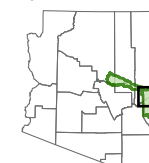
The USDA Forest Service makes no warranty, expressed or implied regarding the data displayed on this map, and reserves the right to correct, update, modify, or replace this information without notification.

### Legend

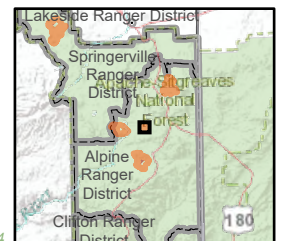
- Described Point
- Described Area
- National Forest Boundary
- Ranger District Boundary
- Wilderness



**ARIZONA**  
Apache County



Map Created on 6/4/2024



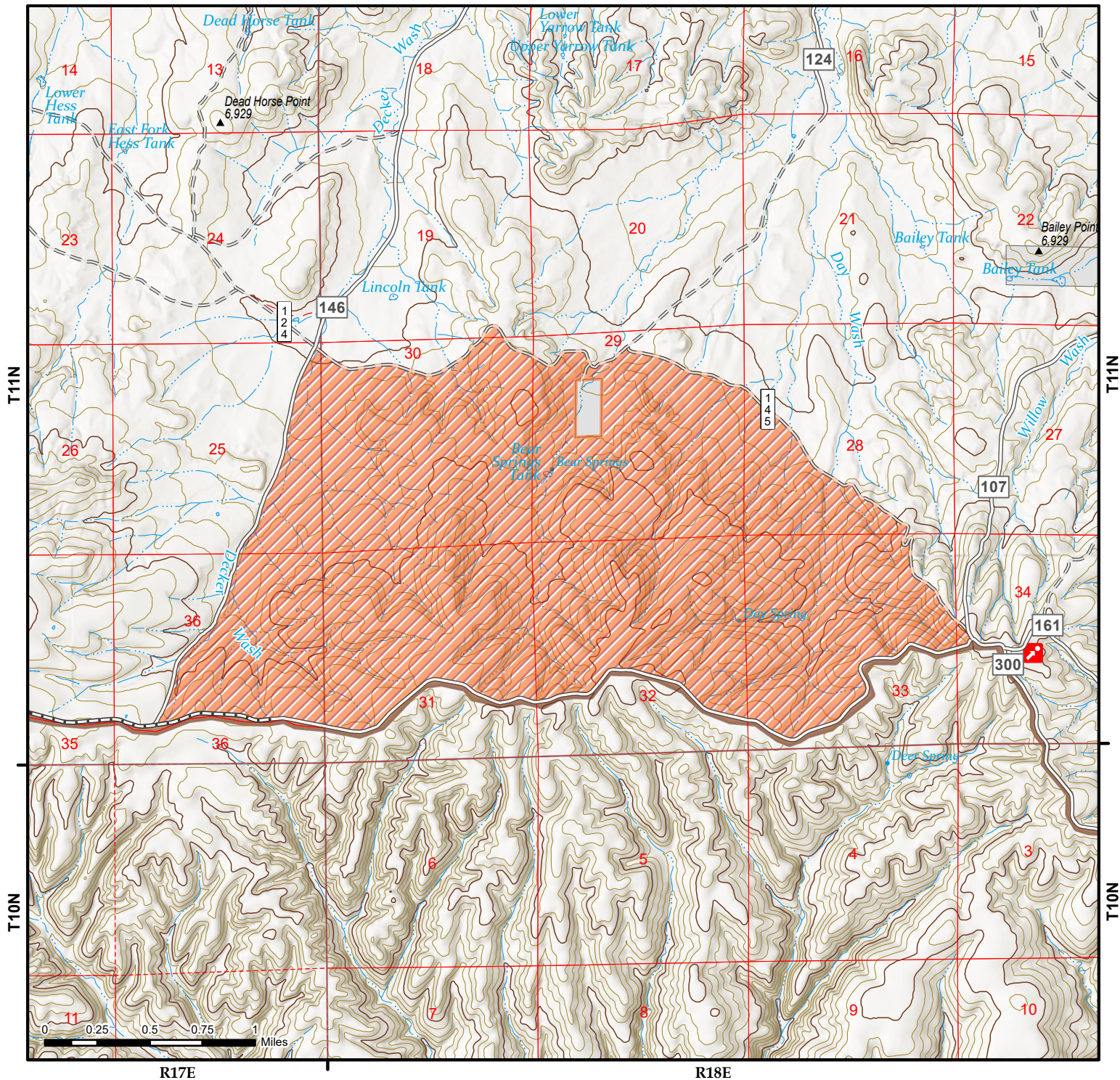


# Bear Springs Wildlife Quiet Area Closure

03-01-24-13

Exhibit: A5

Apache-Sitgreaves National Forests



### Forest Order Information

Order Number: 03-01-24-13  
Start Date: June 10, 2024  
End Date: June 10, 2029

### Disclaimer

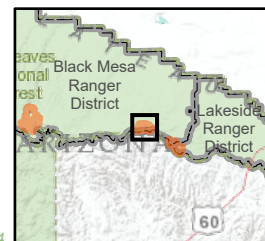
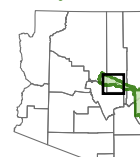
The USDA Forest Service makes no warranty, expressed or implied regarding the data displayed on this map, and reserves the right to correct, update, modify, or replace this information without notification.

### Legend

- Described Point
- Described Area
- National Forest Boundary
- Ranger District Boundary
- Wilderness



**ARIZONA**  
Navajo County



Map Created on 6/4/2024



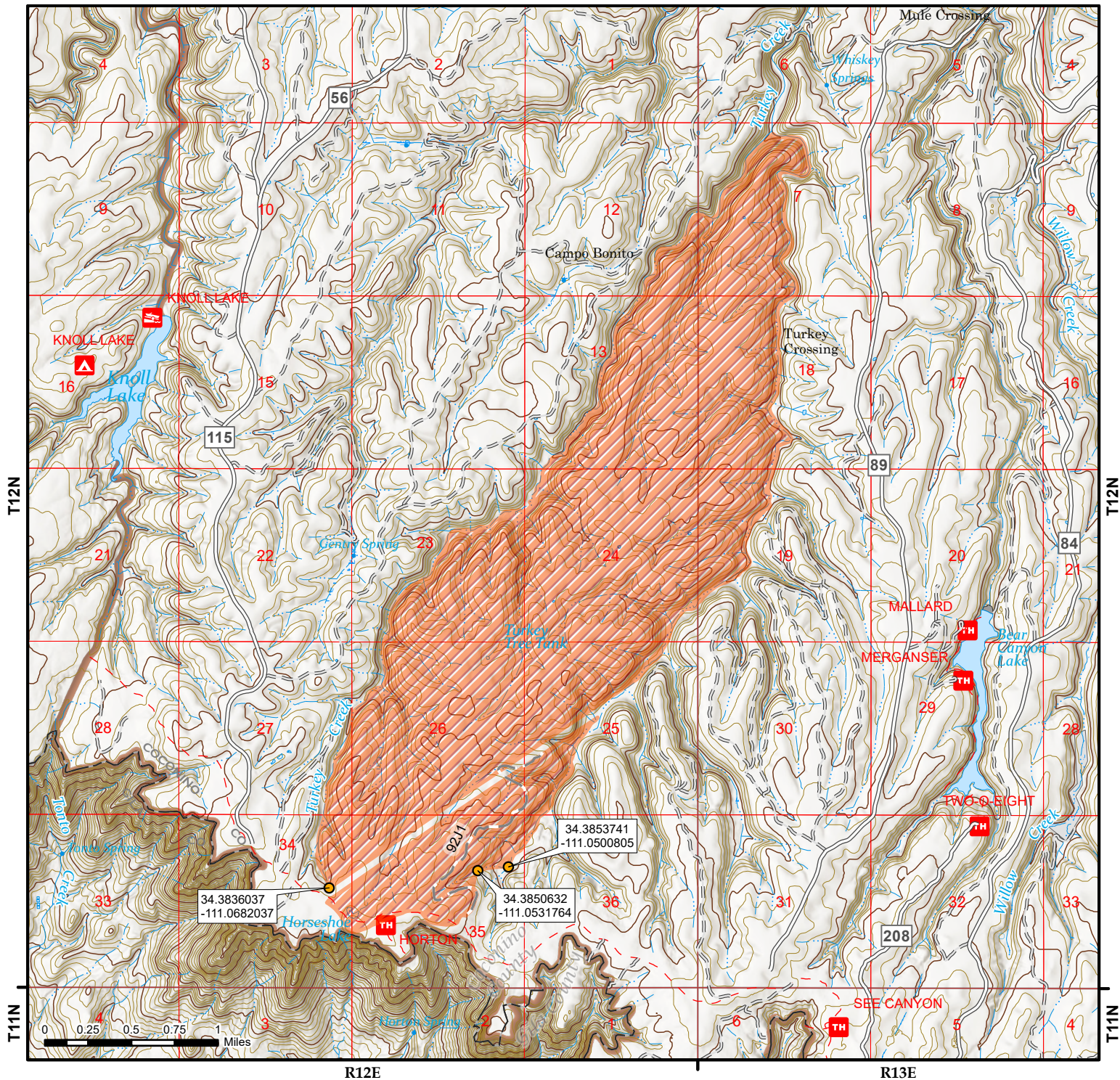
Forest Service  
U.S. DEPARTMENT OF AGRICULTURE

# Beaver Turkey Ridge Wildlife Quiet Area Closure

03-01-24-13

Exhibit: A6

Apache-Sitgreaves National Forests



### Forest Order Information

Order Number: 03-01-24-13  
Start Date: June 10, 2024  
End Date: June 10, 2029

### Legend

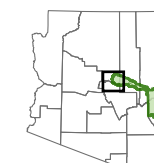
- Described Point
- Described Area
- National Forest Boundary
- Ranger District Boundary
- Wilderness

### Disclaimer

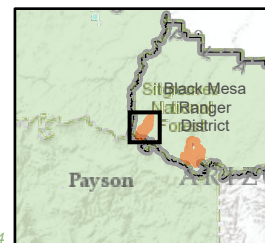
The USDA Forest Service makes no warranty, expressed or implied regarding the data displayed on this map, and reserves the right to correct, update, modify, or replace this information without notification.



ARIZONA  
Coconino County



Map Created on 6/4/2024



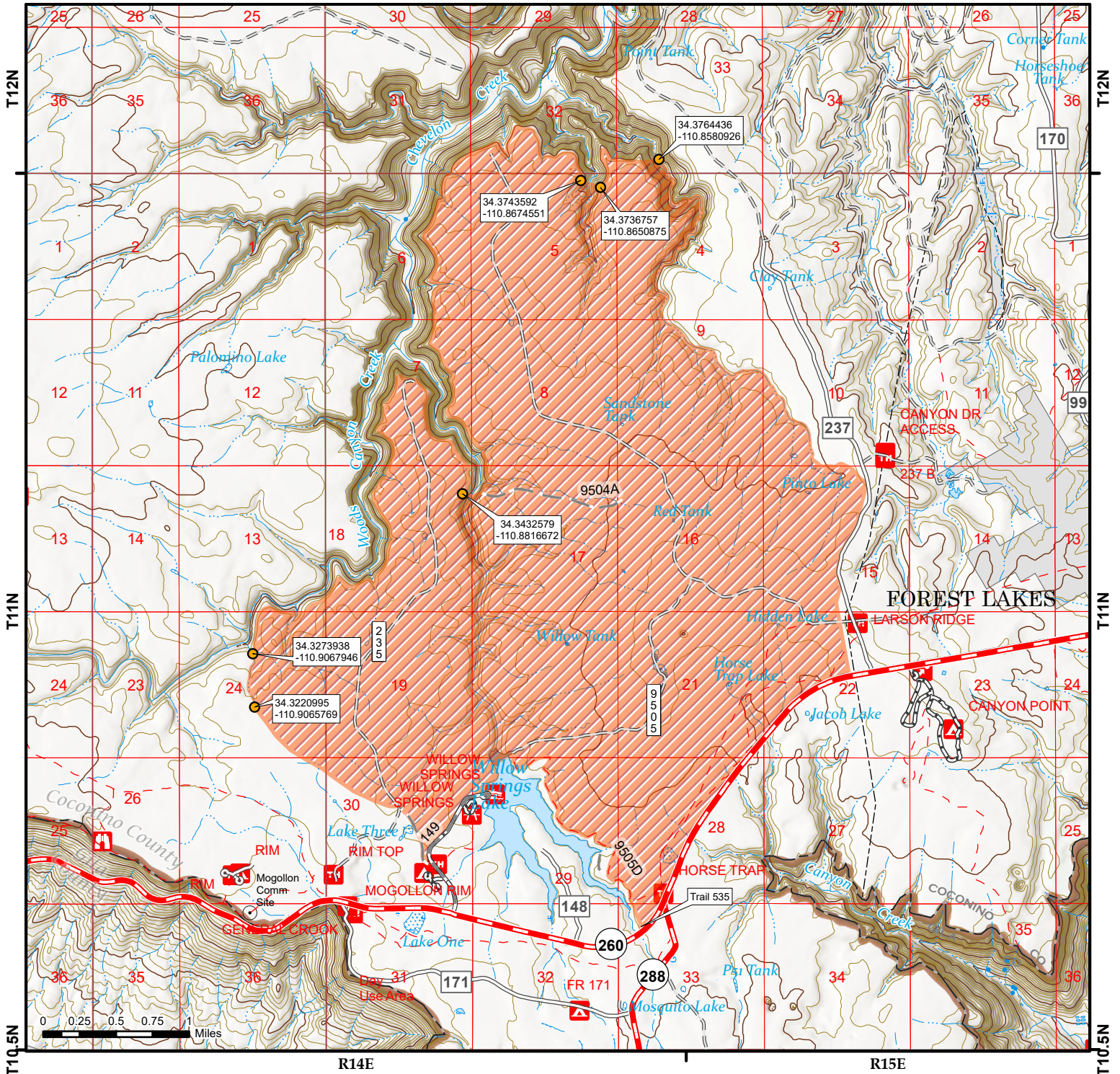


# Willow Springs / Horse Trap Wildlife Quiet Area Closure

03-01-24-13

Exhibit: A7

Apache-Sitgreaves National Forests



### Forest Order Information

Order Number: 03-01-24-13  
Start Date: June 10, 2024  
End Date: June 10, 2029

### Disclaimer

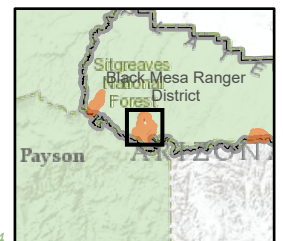
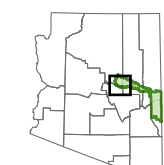
The USDA Forest Service makes no warranty, expressed or implied regarding the data displayed on this map, and reserves the right to correct, update, modify, or replace this information without notification.

### Legend

- Described Point
- Described Area
- National Forest Boundary
- Ranger District Boundary
- Wilderness



**ARIZONA**  
Coconino County



Map Created on 6/4/2024

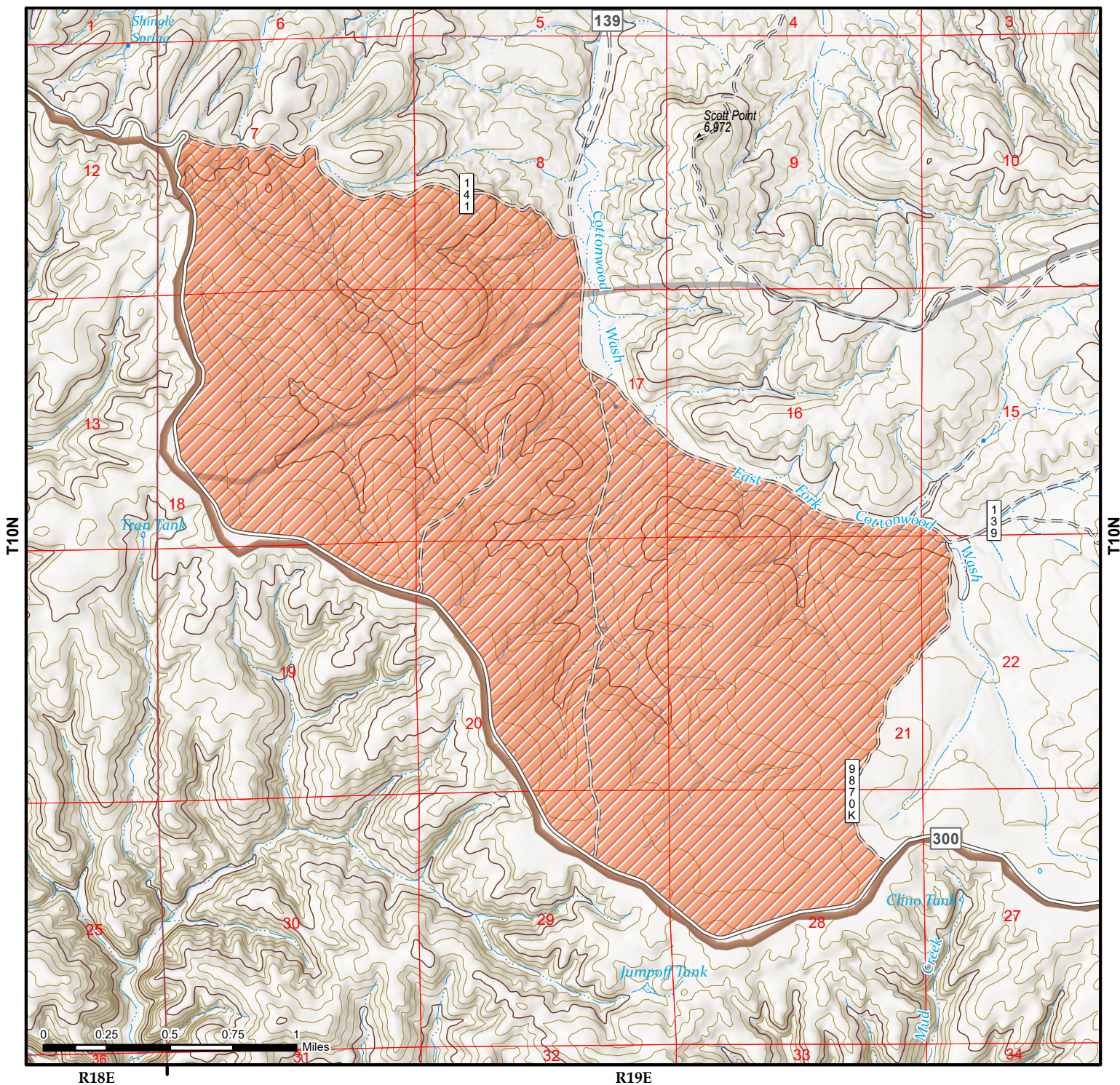


# Cottonwood Seep Wildlife Quiet Area Closure

03-01-24-13

Exhibit: A8

Apache-Sitgreaves National Forests



### Forest Order Information

Order Number: 03-01-24-13  
Start Date: June 10, 2024  
End Date: June 10, 2029

### Disclaimer

The USDA Forest Service makes no warranty, expressed or implied regarding the data displayed on this map, and reserves the right to correct, update, modify, or replace this information without notification.

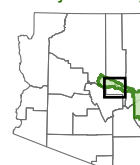
### Legend

- Described Point
- Described Area
- National Forest Boundary
- Ranger District Boundary
- Wilderness

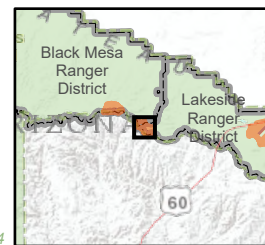


### ARIZONA

Navajo County



Map Created on 6/4/2024





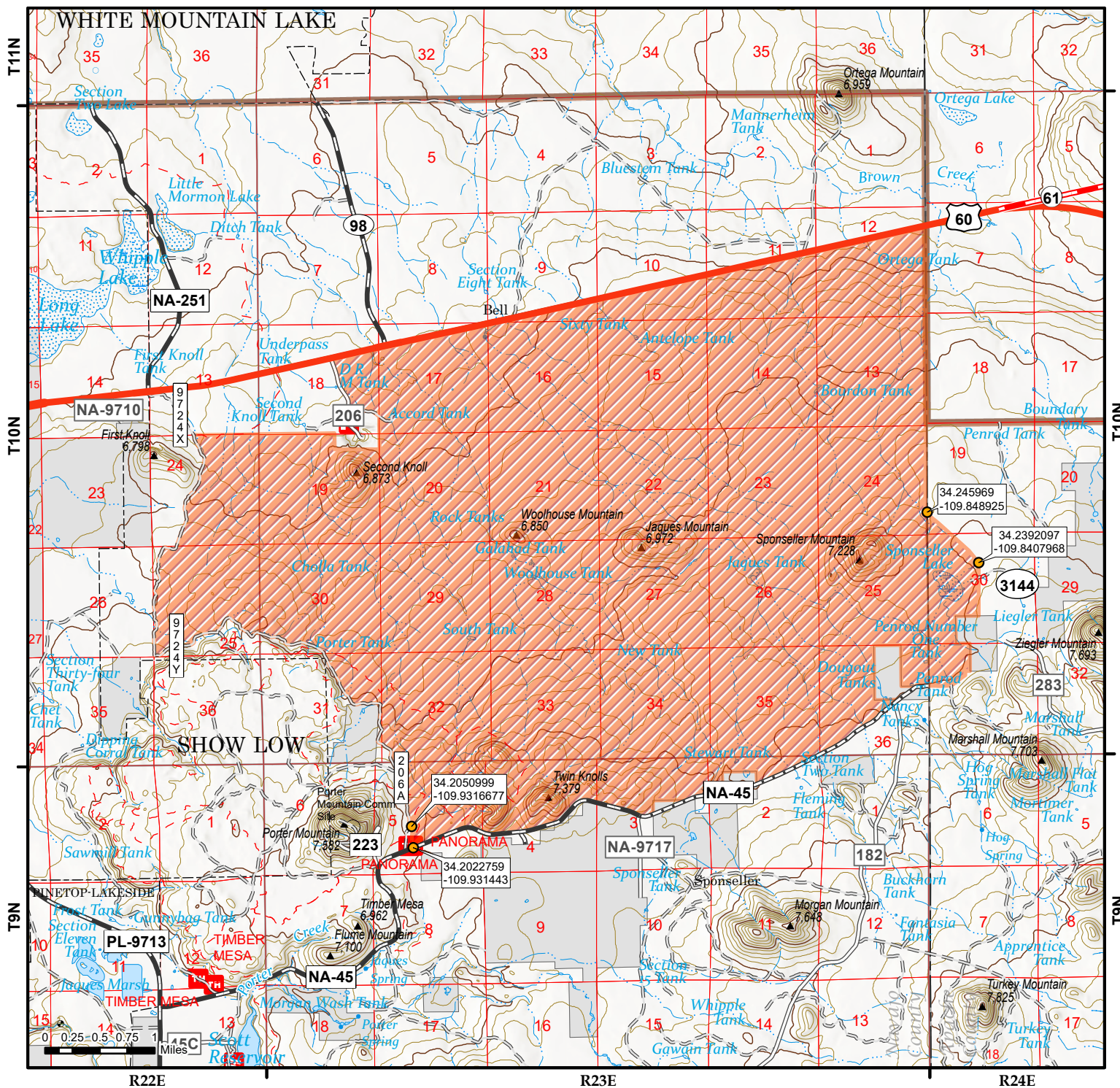


# Woolhouse Wildlife Quiet Area Closure

03-01-24-13

Exhibit: A9

Apache-Sitgreaves National Forests



### Forest Order Information

Order Number: 03-01-24-13  
Start Date: June 10, 2024  
End Date: June 10, 2029

### Legend

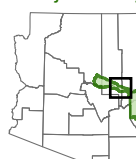
- Described Point
- Described Area
- National Forest Boundary
- Ranger District Boundary
- Wilderness

### Disclaimer

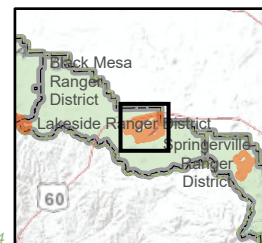
The USDA Forest Service makes no warranty, expressed or implied regarding the data displayed on this map, and reserves the right to correct, update, modify, or replace this information without notification.

### ARIZONA

Navajo County



Map Created on 6/4/2024



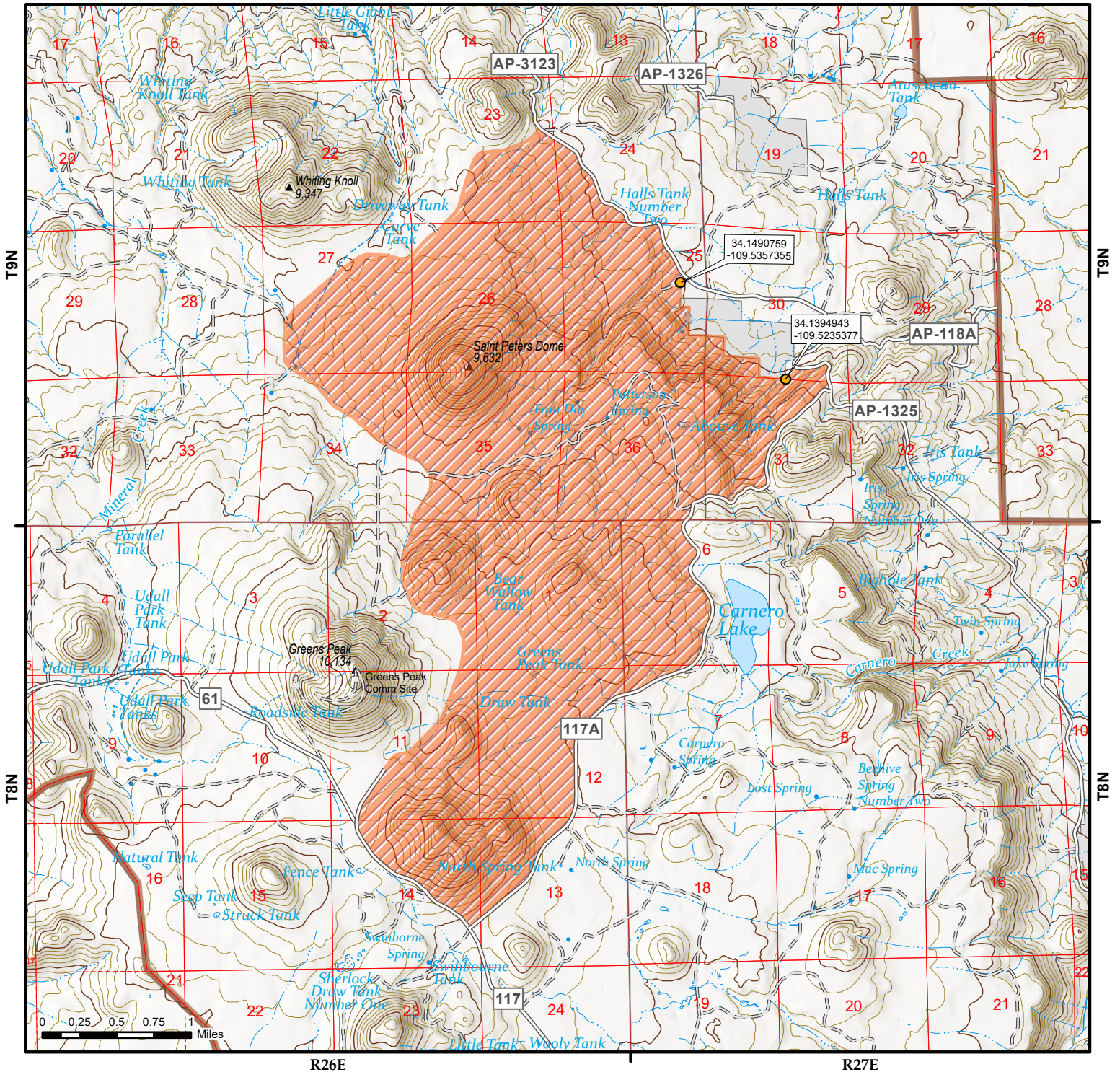


# St Peters Dome Wildlife Quiet Area Closure

03-01-24-13

Exhibit: A10

Apache-Sitgreaves National Forests



### Forest Order Information

Order Number: 03-01-24-13  
Start Date: June 10, 2024  
End Date: June 10, 2029

### Disclaimer

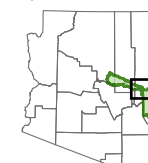
The USDA Forest Service makes no warranty, expressed or implied regarding the data displayed on this map, and reserves the right to correct, update, modify, or replace this information without notification.

### Legend

- Described Point
- Described Area
- National Forest Boundary
- Ranger District Boundary
- Wilderness



**ARIZONA**  
Apache County



Map Created on 6/4/2024

