

# Exhibit A- Temporary Campfire Prohibition

R 11 E










R 13 E

T 18 S

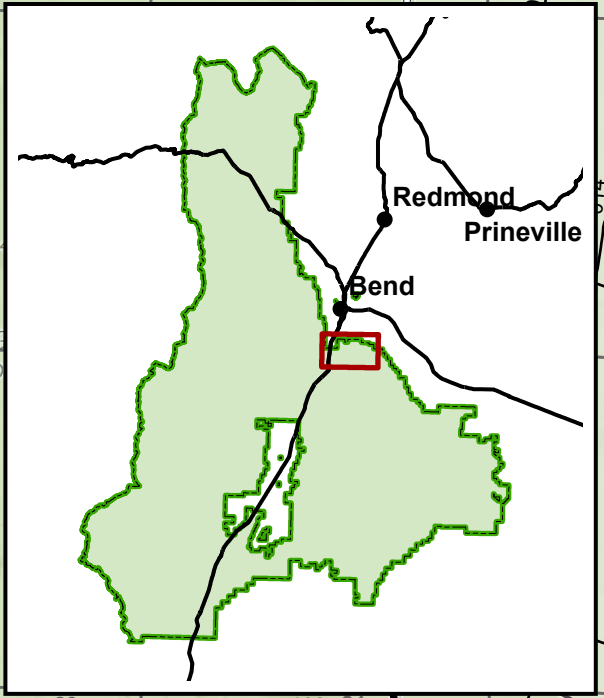
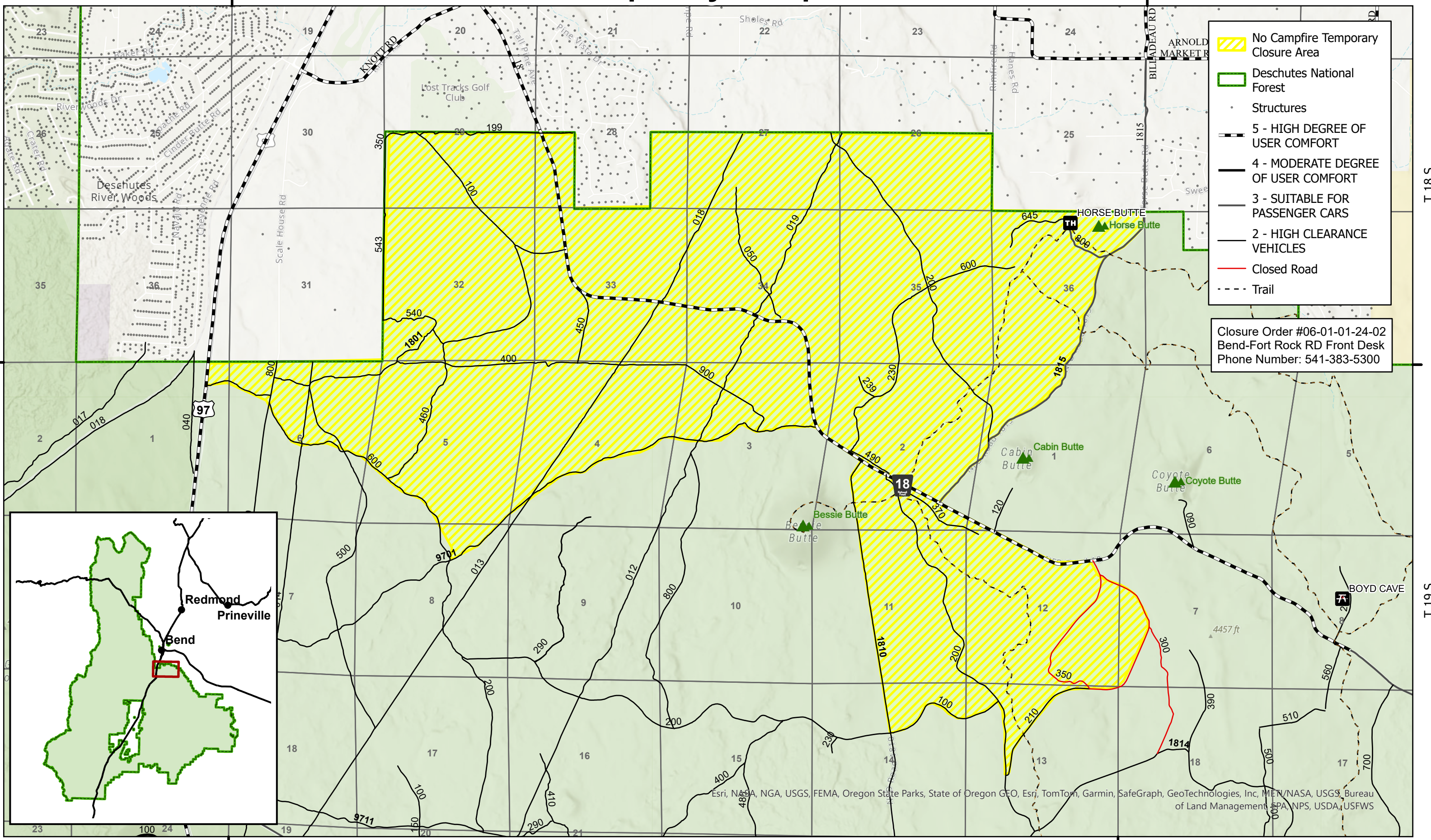
T 18 S

T 19 S

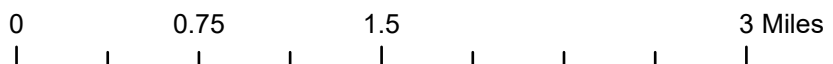
T 19 S

-  No Campfire Temporary Closure Area
-  Deschutes National Forest
-  Structures
-  5 - HIGH DEGREE OF USER COMFORT
-  4 - MODERATE DEGREE OF USER COMFORT
-  3 - SUITABLE FOR PASSENGER CARS
-  2 - HIGH CLEARANCE VEHICLES
-  Closed Road
-  Trail

Closure Order #06-01-01-24-02  
 Bend-Fort Rock RD Front Desk  
 Phone Number: 541-383-5300



Esri, NASA, NGA, USGS, FEMA, Oregon State Parks, State of Oregon GEO, Esri, TomTom, Garmin, SafeGraph, GeoTechnologies, Inc, METI/NASA, USGS, Bureau of Land Management, SPA, NPS, USDA, USFWS



This product is reproduced from geospatial information prepared by the U.S. Department of Agriculture, Forest Service. The Forest Service cannot assure the reliability or suitability of this information if used for a purpose other than which it was created. Original data elements were compiled from various sources. Spatial information may not meet national map accuracy standards. The information may be updated, corrected, or otherwise modified without notification. For additional information about this data, contact the Deschutes National Forest.

R 11 E

R 12 E