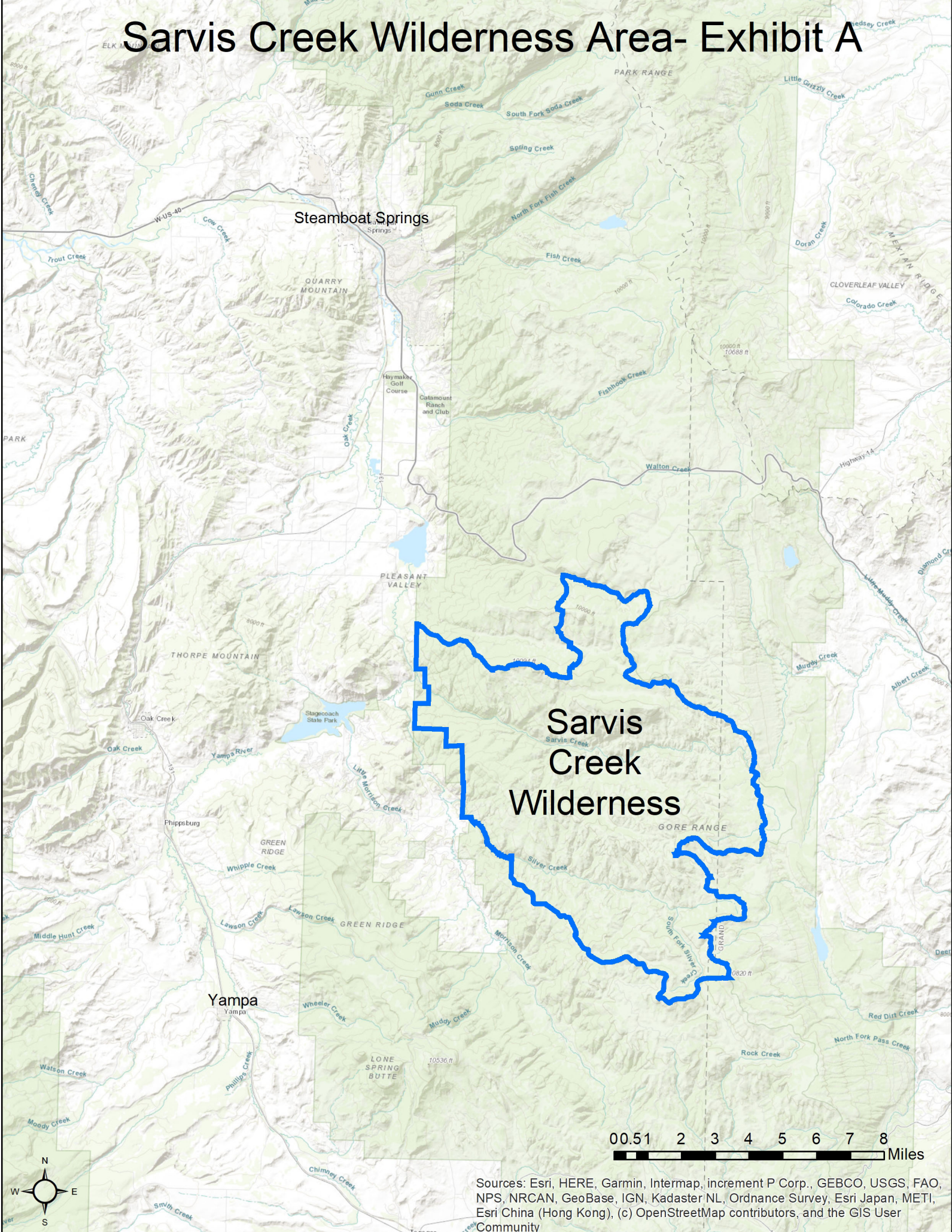
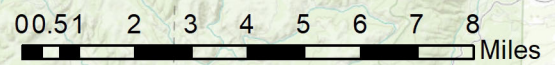


# Sarvis Creek Wilderness Area- Exhibit A



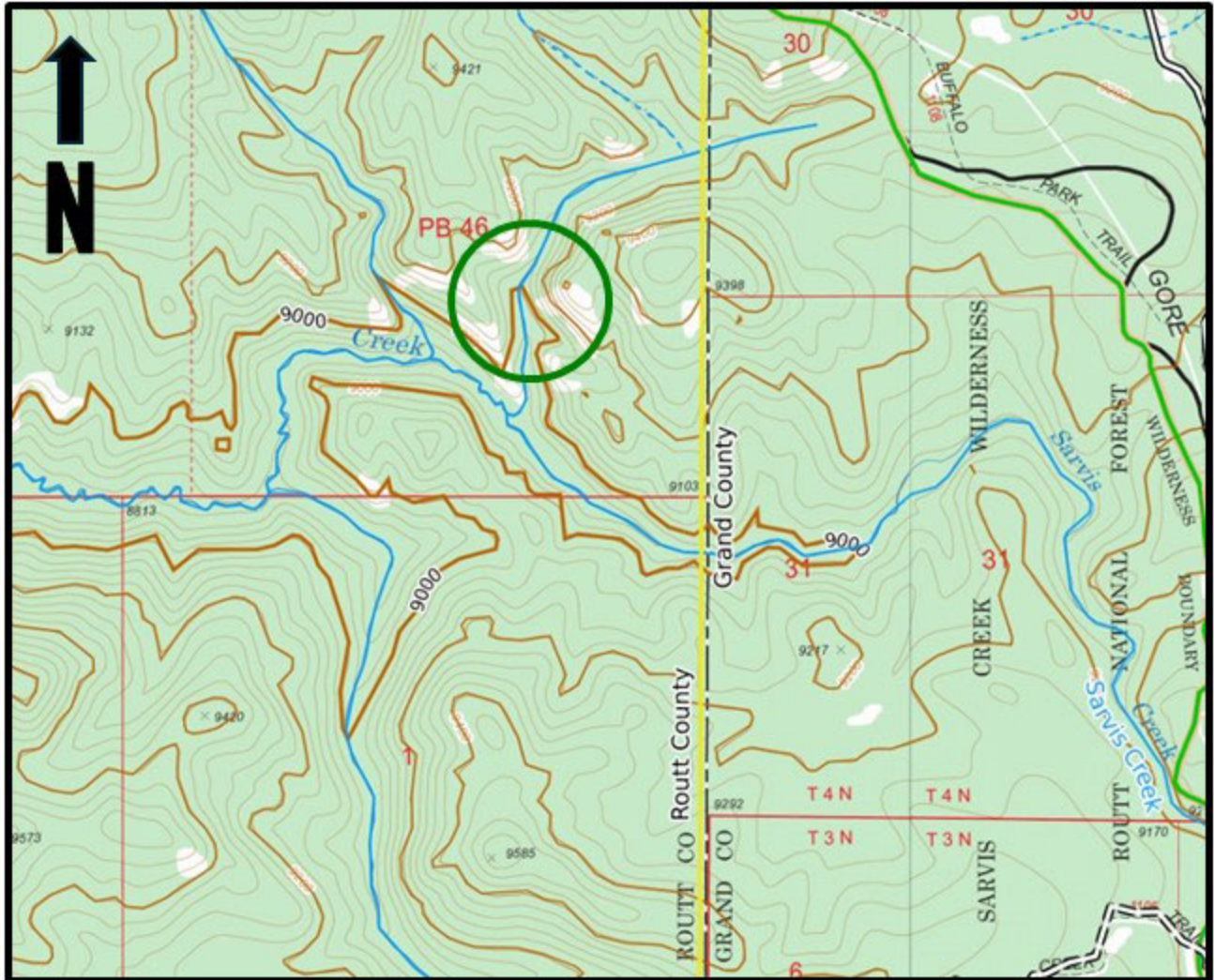
**Sarvis  
Creek  
Wilderness**



Sources: Esri, HERE, Garmin, Intermap, increment P Corp., GEBCO, USGS, FAO, NPS, NRCAN, GeoBase, IGN, Kadaster NL, Ordnance Survey, Esri Japan, METI, Esri China (Hong Kong), (c) OpenStreetMap contributors, and the GIS User Community



Sarvis Creek Wilderness  
Area Closure  
April 1 through July 31  
**Exhibit B**



Described Area B  
within  $\frac{1}{4}$  mile of The Dome  
T4N, R83W, SE  $\frac{1}{4}$  section 36