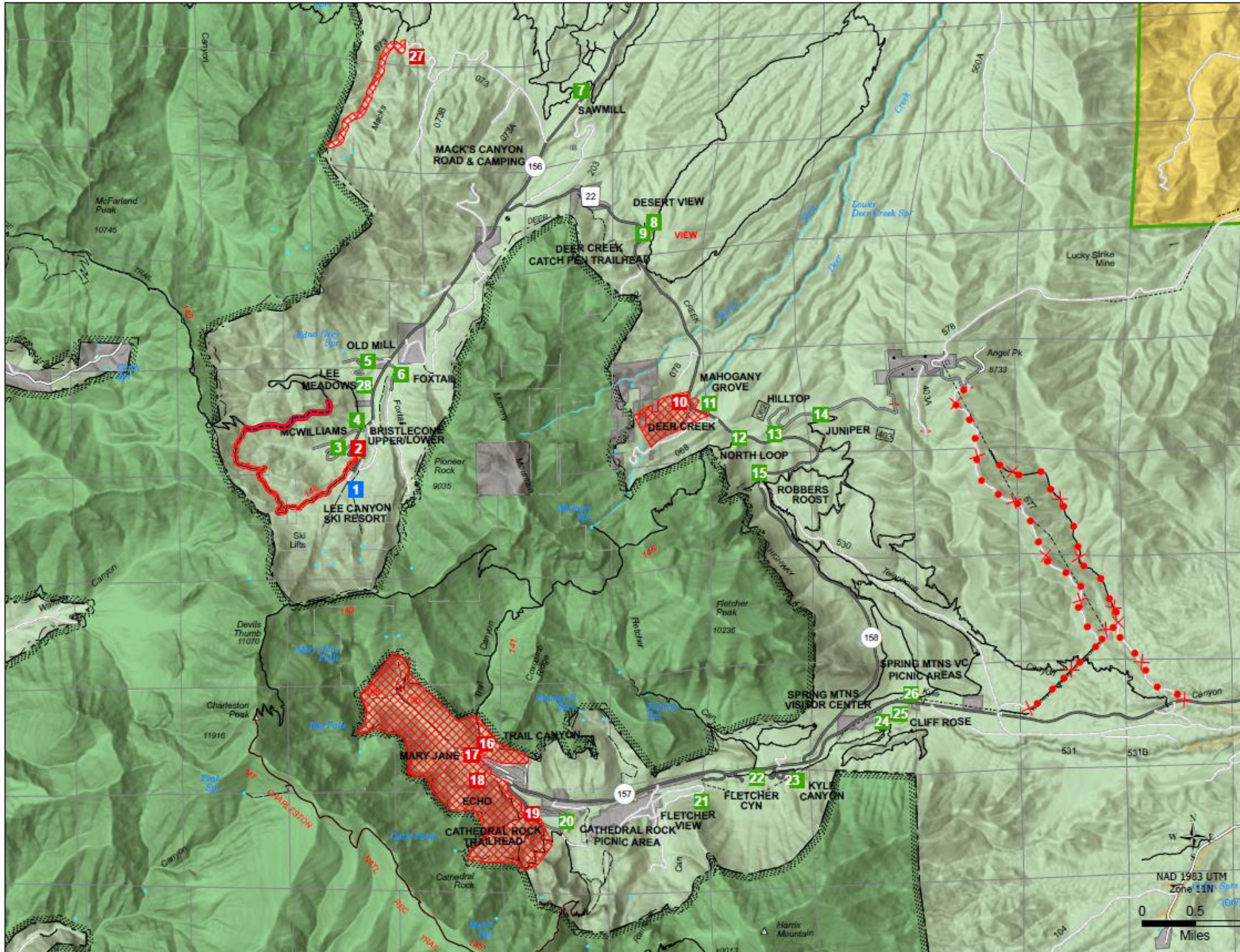




# Spring Mountains National Recreation Area - Recreation Site Status

## Humboldt-Toiyabe National Forest



### Legend

- ✕ Closed Roads
- Closed
- Open
- Ski Area Determines
- USDA Forest Service
- Wilderness
- Bureau of Land Management
- Non-FS

#	Site Name	Site Status
1	Lee Canyon Ski Area (Special Use Permit)	Ski Area Determines
2	Upper Bristlecone Trailhead	Closed
3	McWilliams Campground	Open for Summer Season
4	Lower Bristlecone Trailhead & Road	Open
5	Oldmill Picnic Area	Open for Summer Season
6	Foxtail Group Picnic Area	Open for Summer Season
7	Sawmill Trailhead & Picnic Area	Open for Summer Season
8	Desert View Overlook	Open
9	Deer Creek/Catch Pen Trailhead	Open
10	Deer Creek Picnic Area	Closed
11	Mahogany Grove Group Campground	Open for Summer Season
12	Northloop Trailhead	Open
13	Hilltop Campground	Open for Summer Season
14	Juniper Trailhead	Open
15	Robbers Roost/Telephone Trailhead	Open
16	Trail Canyon Trailhead	Closed
17	Mary Jane Trailhead	Closed
18	Echo Trailhead	Closed
19	Cathedral Rock Trail	Closed
20	Cathedral Rock Picnic Area and Trailhead	Open for Summer Season
21	Fletcher View Campground	Open
22	Fletcher Canyon & Eagle's Nest Trailhead	Open
23	Kyle Canyon Campground/Picnic Area	Open
24	Spring Mountains Visitor Gateway and Trails	Open
25	Cliffrose Trailhead	Open
26	Spring Mountains Visitor Gateway Picnic Areas	Open
27	Mack's Canyon Road	Partially Closed (After Mile 2)
28	Lee Meadow	Open



### Disclaimer

The USDA Forest Service makes no warranty, expressed or implied regarding the data displayed on this map, and reserves the right to correct, update, modify, or replace this information without notification.