



**U.S. Department of Agriculture, U.S. Forest Service
Idaho Panhandle National Forest
Coeur d'Alene River Ranger District**

Road Closure

PROHIBITIONS

Pursuant to 16 U.S.C. § 551 and 36 C.F.R. § 261.50(b) the following are prohibited on the National Forest System (NFS) roads in the Coeur d'Alene River Ranger District, Idaho Panhandle National Forest, described below and shown on the attached map incorporated into this Order as Exhibit A (Ridge Creek Salvage Road Closure Order):

1. Being on the road 36 CFR 261.54(e)

EXEMPTIONS

Pursuant to 36 C.F.R. § 261.50(e), the following persons are exempt from this Order:

1. Persons with Forest Service Permit No. FS-7700-48 (Permit for Use of Roads, Trails, or Areas Restricted by Regulation or Order), specifically exempting them from this Order or a written determination by a Forest Service authorized officer that a permit is not required under 36 C.F.R. § 251.50(e)(1) or (2).
2. Any Federal, State, or Local Officer, or member of an organized rescue or firefighting resource in the performance of an official duty.

DESCRIBED ROADS

Forest Development Road 1530.

The portion of Forest Development Road 437 from the intersection with Forest Developmental Road 206 to intersection with Forest Development Road 406.

The portion of Forest Development Road 406 from mile post 11.8 to intersection with Sage Creek Saddle.

The portion of Forest Development Road 428 from Hudlow Saddle to mile post 1.

The closed roads are also shown on the map attached as Exhibit A.

PURPOSE

This closure is for public and contractor safety due to timber harvest activity on nearby lands in the Coeur D' Alene River Ranger District.

IMPLEMENTATION

1. This Order shall be in effect from:

May 20th, 2024 through October 31st, 2024 starting on Mondays at 03:00 am through Fridays at 05:00 pm. The closure order will not apply on weekends and the following major holidays of Memorial Day, Fourth of July, and Labor Day.

2. A map identifying the Described Roads is attached and made part of this Order as Exhibit A. For a digital version of this Order and Exhibit A, go to [Idaho Panhandle National Forests - Alerts & Closures \(usda.gov\)](https://www.fs.usda.gov/alerts/ipnf/alerts-notice) – <https://www.fs.usda.gov/alerts/ipnf/alerts-notice>
3. Unless otherwise expressly defined in this Order, the terms used in this Order are defined by the regulations of the Secretary of Agriculture, 36 C.F.R. Chapter II, Parts 200-299. If there are terms in this Order that are not expressly defined in the Order or 36 C.F.R. Chapter II, Parts 200-299, their meaning shall be determined by their plain language definitions.
4. A violation of the above prohibitions is punishable as a Class B misdemeanor by a fine of not more than \$5,000 for individuals and \$10,000 for organizations, or by imprisonment for not more than six months, or both. 16 U.S.C. § 551; 18 U.S.C. §§ 3559, 3571, and 3581.
5. Contact the Coeur d'Alene River Ranger District in Coeur d'Alene Idaho, (208)664-2381, and Idaho Panhandle National Forest Supervisor's Office in Coeur d'Alene Idaho, (208) 765-7223, for more information about this Order.
6. This Order supersedes any previous Orders prohibiting the same or similar acts on the same Described Roads.

Signed and issued on May 14, 2024.

Timothy Gilloon
Forest Supervisor
Idaho Panhandle National Forests



Idaho Panhandle National Forests



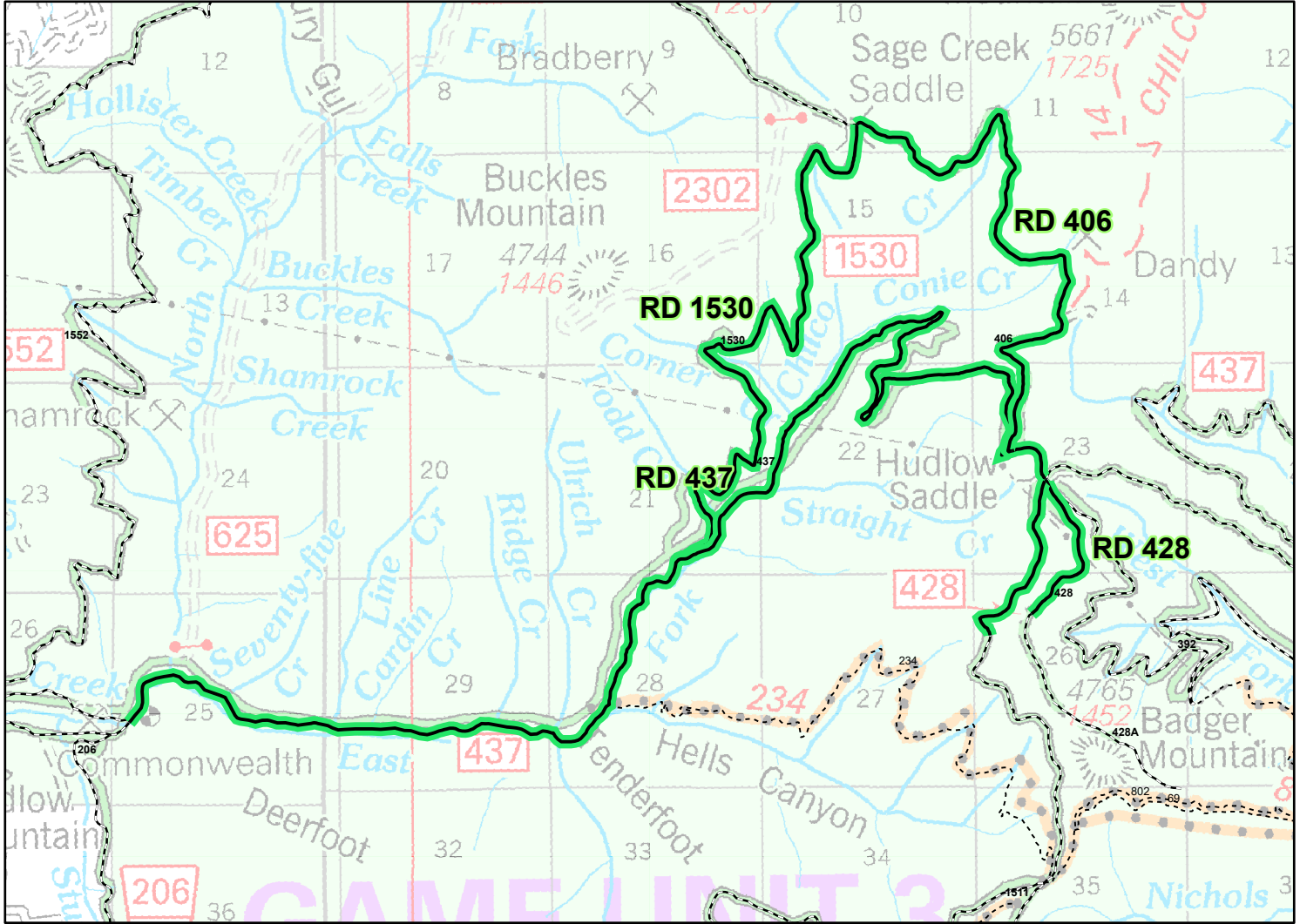
Forest Closure: Ridge Creek Salvage

Order Number: 01-04-03-24-002

Effective Date : May 20, 2024

Rescind Date : October 31, 2024

Exhibit A



Kootenai County, Idaho

Closed Route Numbers

Closures

Roads: 437, 428, 406, 1530

 Road

