

## Last Chance/Porcupine Prescribed Fire Fremont River Ranger District, Fishlake National Forest



**Contact Information:** Kent Chappell, 435-691-2967, [kent.chappell@usda.gov](mailto:kent.chappell@usda.gov) or  
Trevor Johnson, 435-231-9747, [trevor.johnson@usda.gov](mailto:trevor.johnson@usda.gov)

**Planned Date:** May 2024 – November 2024

**Location:** Clear Creek drainage.

**Legal Description:** Township 25  
South, Range 4 East, Sections  
20,21,28,29,30 and 32.

**Lat/Long:** N 38, 36.899, W -111,  
29.309

**Planned Actions:** The Fremont River Ranger District, Fishlake National Forest, plans to implement prescribed fire in the Last Chance and Porcupine areas tomorrow, May 17, 2024. The project comprises two units in the Last Chance area, totaling 3,915 acres, and three units in the West Tidwell, Porcupine, and other adjoining Utah areas, totaling 9,292 acres. Implementation of the projects will be ongoing over the next five to six years.

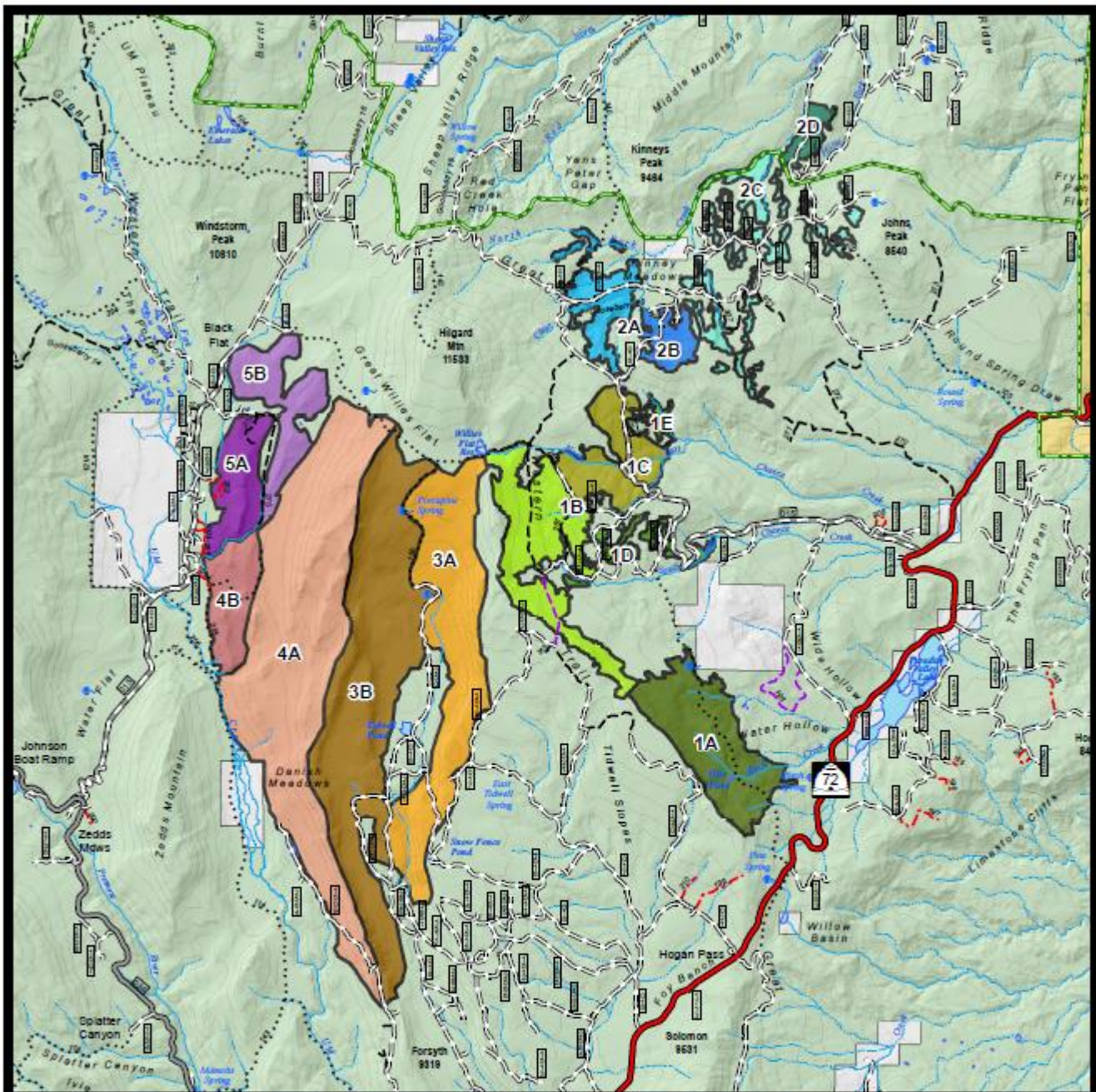


Implementation will begin in Unit 1A of Last Chance for 1000 acres; ignitions are contingent on smoke clearances and desirable weather conditions.

### Resource Objectives:

- To reduce hazardous fuel accumulations on Forest Service Lands within the Last Chance/Porcupine Project area
- Restore ecosystems to properly functioning conditions regarding species composition, structure, and function. Reduce the risk to life, property, and natural resources
- Promote the regeneration and recruitment of aspen communities and create a mosaic burn pattern with various fire severities





## Last Chance / Porcupine RX Topographic Map

### Last Chance Units

- 1A: 1,001.7 acres
- 1B: 1,033.7 acres
- 1C: 625.6 acres
- 1D: 167.2 acres
- 1E: 44.5 acres
- 2A: 383.6 acres
- 2B: 222.1 acres
- 2C: 623.3 acres
- 2D: 136.2 acres

### Porcupine Units

- 3A: 1,785.6 acres
- 3B: 2,657.7 acres
- 4A: 3,307.9 acres
- 4B: 470.3 acres
- 5A: 479.3 acres
- 5B: 613.8 acres

### Travel Routes

- Highway
- Paved Road
- Gravel Road, Suitable for Passenger Car
- Road, Not Maintained for Passenger Car
- Trails Open to Vehicles 50" or Less in Width
- Trails Open to Vehicles 60" or Less in Width
- Trails Open To All Vehicles
- Non-Motorized Trails

### Ownership

- US Forest Service (USFS)
- Bureau of Land Management (BLM)
- Private

### General Area



This map is prepared as a general reference and does not constitute a warranty of accuracy. The USFS and BLM are not responsible for any errors or omissions. This map is prepared for informational purposes only. It is not intended for use in any legal proceeding. The USFS and BLM are not responsible for any damages or injuries resulting from the use of this map. The USFS and BLM are not responsible for any changes in the information shown on this map. The USFS and BLM are not responsible for any changes in the information shown on this map.



Date: 10/19/2022  
Map By: [redacted]