



**U.S. Department of Agriculture, U.S. Forest Service
Idaho Panhandle National Forests
St. Joe Ranger District
FSR 506 / TRAIL 15 CLOSURE ORDER**

PROHIBITIONS

Pursuant to 16 U.S.C. § 551 and 36 C.F.R. § 261.50(b), the following is prohibited on the National Forest System (NFS) road and trail in the St. Joe Ranger District, Idaho Panhandle National Forests, described below and shown on the attached map incorporated into this Order as Exhibit A (the "Described Road/Trail"):

1. Being on the Road. 36 C.F.R. § 261.54(e)
2. Being on the Trail. 36 C.F.R. § 261.55(a)

EXEMPTIONS

Pursuant to 36 C.F.R. § 261.50(e), the following persons are exempt from this Order:

1. Persons with Forest Service Permit No. FS-7700-48 (Permit for Use of Roads, Trails, or Areas Restricted by Regulation or Order), specifically exempting them from this Order or a written determination by a Forest Service authorized officer that a permit is not required under 36 C.F.R. § 251.50(e)(1) or (2).
2. Any Federal, State, or Local Officer, or member of an organized rescue or firefighting resource in the performance of an official duty.

DESCRIBED ROADS/TRAILS

National Forest System Road 506 beginning at Moss Creek Trailhead (milepost 1.9) and ending at the west portal of Tunnel 21 (milepost 2.6).

Hiawatha Rail Trail 15 beginning at Moss Creek Trailhead (milepost 10.5) and ending at Pearson Trailhead (milepost 14.6).

PURPOSE

This closure is for public and contractor safety due to tunnel maintenance activity on the

St. Joe Ranger District and prohibits all methods of travel (foot, mechanized, motorized, and stock) on the Described Roads/Trails.

IMPLEMENTATION

1. This Order shall be in effect from:

May 7th, 2024, at 12:01 a.m. to May 24th, 2024, at 6:00 a.m.

May 24th 6:00 p.m. to September 15th 6:00 p.m. The closure order is in effect from 6:00 p.m. to 6:00 a.m. when night-time tunnel improvement work is being conducted. The closure order is not in effect when the trail is open for public use from 6:00 a.m. to 6:00 p.m. on a daily basis.

September 15th, 2024, 6:00 p.m. to October 31st, 2024, 12:01 a.m.

2. A map identifying the Described FSR 506 / Trail 15 is attached and made part of this Order as Exhibit A. For a digital version of this Order and Exhibit A, go to [Idaho Panhandle National Forests - Alerts & Closures \(usda.gov\)](https://www.fs.usda.gov/alerts/ipnf/alerts-notice) - <https://www.fs.usda.gov/alerts/ipnf/alerts-notice>
3. Unless otherwise expressly defined in this Order, the terms used in this Order are defined by the regulations of the Secretary of Agriculture, 36 C.F.R. Chapter II, Parts 200-299. If there are terms in this Order that are not expressly defined in the Order or 36 C.F.R. Chapter II, Parts 200-299, their meaning shall be determined by their plain language definitions.
4. A violation of the above prohibitions is punishable as a Class B misdemeanor by a fine of not more than \$5,000 for individuals and \$10,000 for organizations, or by imprisonment for not more than six months, or both. 16 U.S.C. § 551; 18 U.S.C. §§ 3559, 3571, and 3581.
5. Contact the St. Joe Ranger District in St. Maries Idaho, (208) 245-2531, and Idaho Panhandle National Forests Supervisor's Office in Coeur d'Alene Idaho, (208) 765-7223, for more information about this Order.
6. This Order supersedes any previous Orders prohibiting the same or similar acts on the same Described FSR 506 / Trail 15.

Signed and issued on May 7, 2024.

Timothy Gilloon
Forest Supervisor

Idaho Panhandle National Forests



Idaho Panhandle National Forests

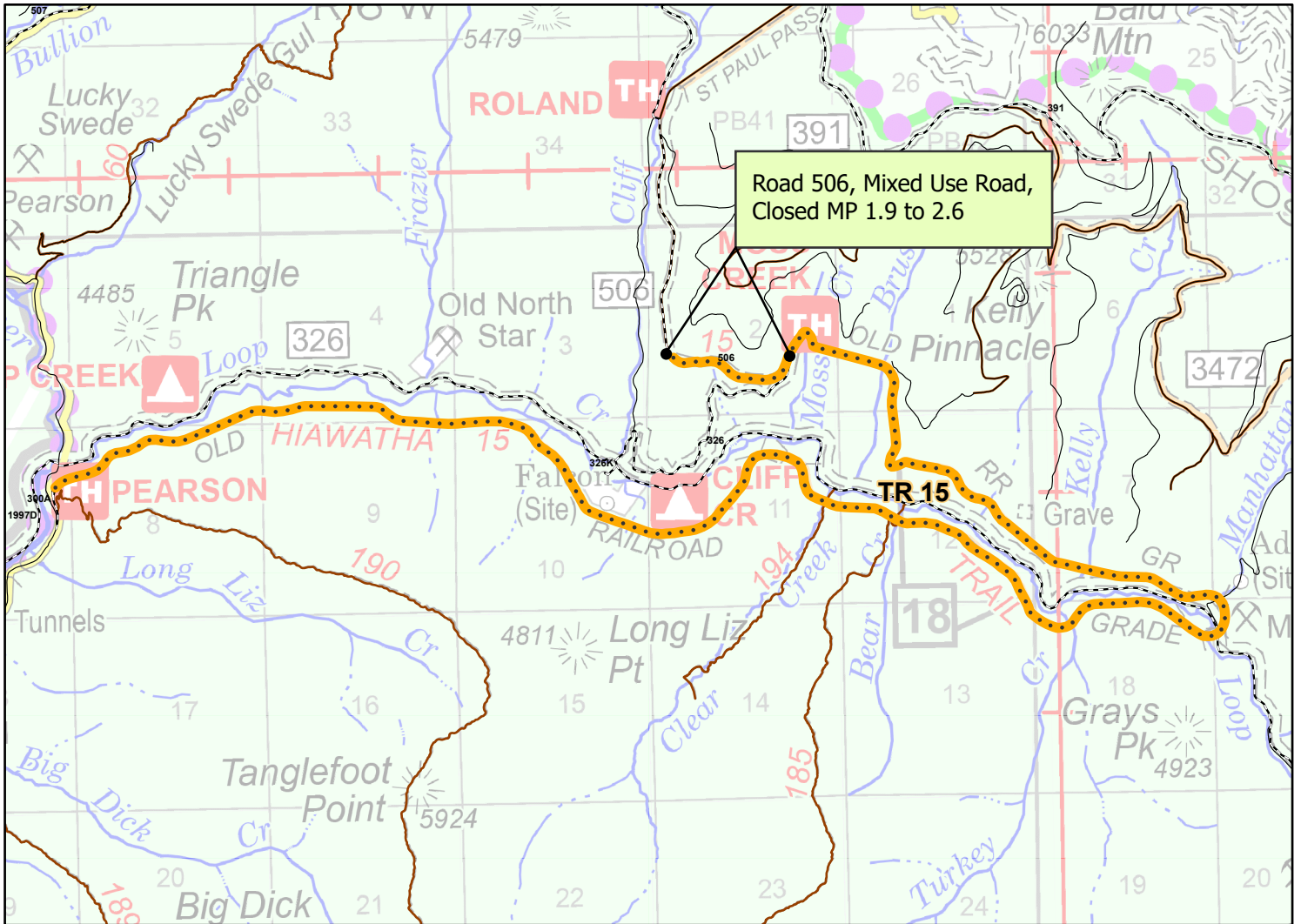
Forest Closure: Trail 15 - Improvements



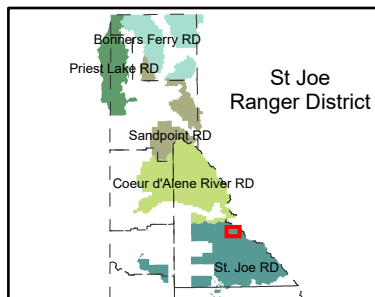
Order Number: 01-04-04-24-002

SEE EFFECTIVE DATES ON
CLOSURE ORDER

Exhibit A



Shoshone County, Idaho



Closed Route Numbers

Trail 15
Road 506 (MP 1.9 to 2.6)

Closures

 Trail

