

**UNITED STATES DEPARTMENT OF AGRICULTURE  
UNITED STATES FOREST SERVICE  
OUACHITA NATIONAL FOREST  
HOT SPRINGS, AR**

**FOREST ORDER NO. OA-ONF-06-2024**

**TRAILS**

Pursuant to Title 16 USC § 551 and Title 36 CFR 261.50 (a) and (b), the following acts are prohibited on designated hiking trails on lands administered by the Ouachita National Forest. These trails are depicted in the map(s) attached hereto and incorporated herein.

It is Prohibited to:

1. Be on the trail in violation of posted restrictions that are based on approved trail management objectives. 36 CFR 261.55(a)
2. Shortcut a switchback. 36 CFR 261.55(c)

Pursuant to 36 CFR 261.50(e) the following persons are exempt from the above prohibitions:

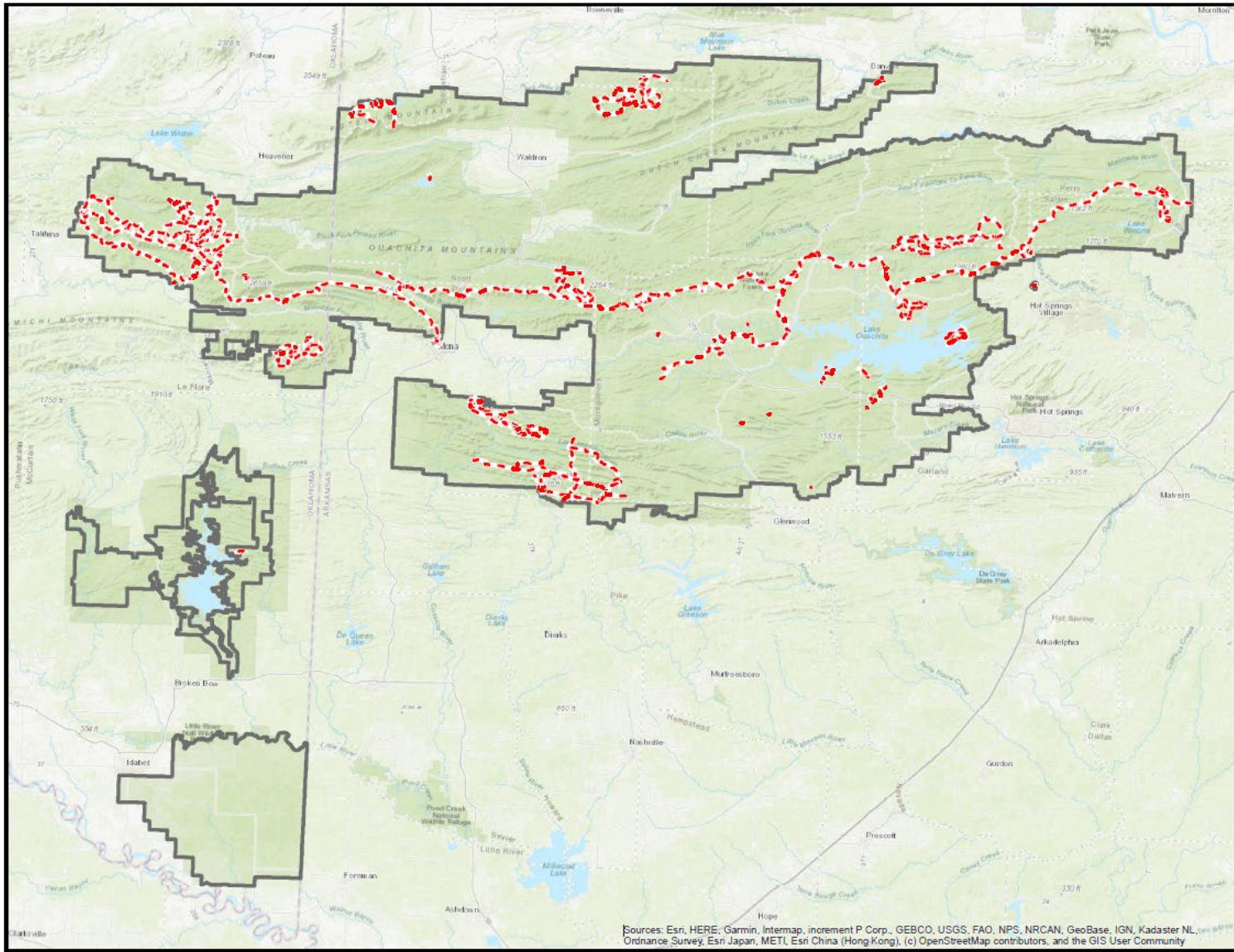
1. Persons with a permit specifically authorizing the otherwise prohibited act or omission.
2. Any Federal, State, or local officer, or member of an organized rescue or fire fighting force in the performance of their official duty.
3. Persons with a Forest Permit for Use of Roads, Trails, or Areas Restricted by Regulation or Order, Form FS-7700-48, specifically exempting them from the effect of this Order.

These prohibitions are in addition to the general prohibitions in 36 CFR Part 261, Subpart A. **This Order will expire two (2) years after the date of execution.**

Executed in Hot Springs, Arkansas, this \_\_ 1st \_\_ day of \_\_ May \_\_, 2024.

\_\_\_\_\_  
DAN OLSEN  
Forest Supervisor  
Ouachita National Forest

A violation of these prohibitions is punishable by a fine of not more than \$5,000 for an individual or \$10,000 for an organization, or imprisonment for not more than 6 months, or both. 16 USC 551 and 18 USC 3559, 3571 and 3581.



### Trails Closure Supervisor's Order

#### Ouachita National Forest

Arkansas/Oklahoma  
Forest Wide

--- Trail

▭ Ouachita National Forest Boundary



Sources: Esri, HERE, Garmin, Intermap, increment P Corp., GEBCO, USGS, FAO, NPS, NRCAN, GeoBase, IGN, Kadaster NL, Ordnance Survey, Esri Japan, METI, Esri China (Hong Kong), (c) OpenStreetMap contributors, and the GIS User Community

