

Legend

- Roads Open to Highway Legal Vehicles
- Roads Open to All Vehicles
- Trails Open to Wheeled Vehicles 50' or Less in Width
- Trails Open to Motorcycles Only
- Special Vehicle Designation (See Table)
- Seasonal Designation (See Table)
- Highways, U.S. State
- Other Public Roads
- Dispersed Camping Allowed
- Short Route Identifier
- Milepost Marker
- Information Site
- FS Campground
- Peaks
- Forest or Unit Boundary
- National Forest System Lands
- Non-National Forest System Lands within the National Forest
- Wilderness Areas
- Political Boundary
- Lakes and Rivers

EXPLANATION OF LEGEND ITEMS

Roads Open to Highway Legal Vehicles Only:
 These roads are open only to motor vehicles licensed under State law for general operation on all public roads within the state.

Roads Open to All Vehicles:
 These roads are open to all motor vehicles, including smaller off-highway vehicles that may not be licensed for highway use (but not to oversize or overweight vehicles under State traffic law).

Trails Open to Wheeled Vehicles 50' or less in Width:
 These trails are open only to wheeled, motor vehicles less than 50 inches in width at the widest point on the vehicle.

Trails Open to Motorcycles Only:
 These trails are open only to motorcycles. Sidecars are not permitted.

Special Vehicle Designation:
 This symbol indicates the road or trail is open to classes of vehicles other than those listed above. Refer to the Seasonal and Special Designation Table for further instructions.

Seasonal Designation:
 This symbol, used in conjunction with one of the other road or trail symbols, indicates that the road or trail is open only during certain portions of the year. Refer to Seasonal and Special Designation Table for further instructions.

Other Public Roads and Trails:
 Highways, U.S. State
 Other Public Roads
 Other Public Trails

These symbols are used to show routes the Forest Service does not have jurisdiction over and has not designated for motorized use. These symbols are part of the reference layers showing connections to towns and cities outside the forest boundary.

Dispersed Camping Allowed:
 Motor vehicle use off of designated roads only for accessing dispersed campsites is permitted for up to 300 feet from the centerline of the road for the period of allowed use as shown on this map except in areas where there are Marked Designated Dispersed Sites.

Short Route Identifier:
 This symbol is used for roads that are too short to show a symbol type on the map. The symbol contains the number of the road or trail. Users should refer to the corresponding number in the Short Route Table for designation information.

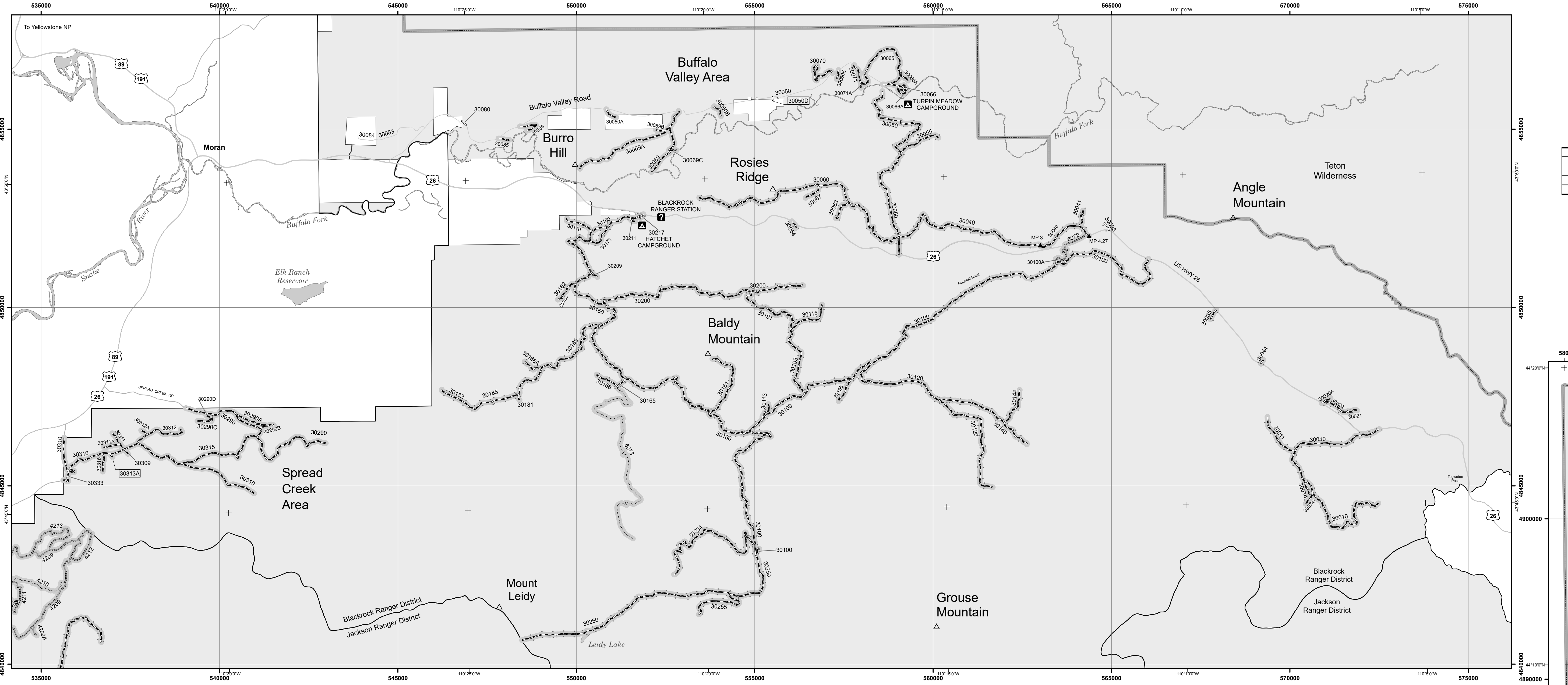
Milepost Marker:
 This symbol is used to display the beginning and ending mileposts of a road that has a change in the designation but not the symbology.

Trails Open to E-Bikes:
 The Forest Service manages e-bikes as a motor vehicle. Class 1, 2, and 3 e-bikes are allowed on roads designated for any classes of motor vehicles and where consistent with state laws regarding e-bike use on public roads. Class 1, 2, and 3 e-bikes are also allowed on trails open to all classes of motor vehicles, including motorcycles, and trails designated for those classes of e-bikes. Refer to the Seasonal and Special Vehicle Designation Table for roads and trails that have restrictions on the use of e-bikes.

Marked Designated Dispersed Sites

In certain areas along designated motor vehicle routes where general dispersed camping with motor vehicles is not allowed, a number of designated dispersed campsites have been marked on-the-ground. In these designated dispersed campsites, the access road to the site and the site itself are only open to motor vehicles for the purpose of camping during the same season of use indicated for the adjacent road.

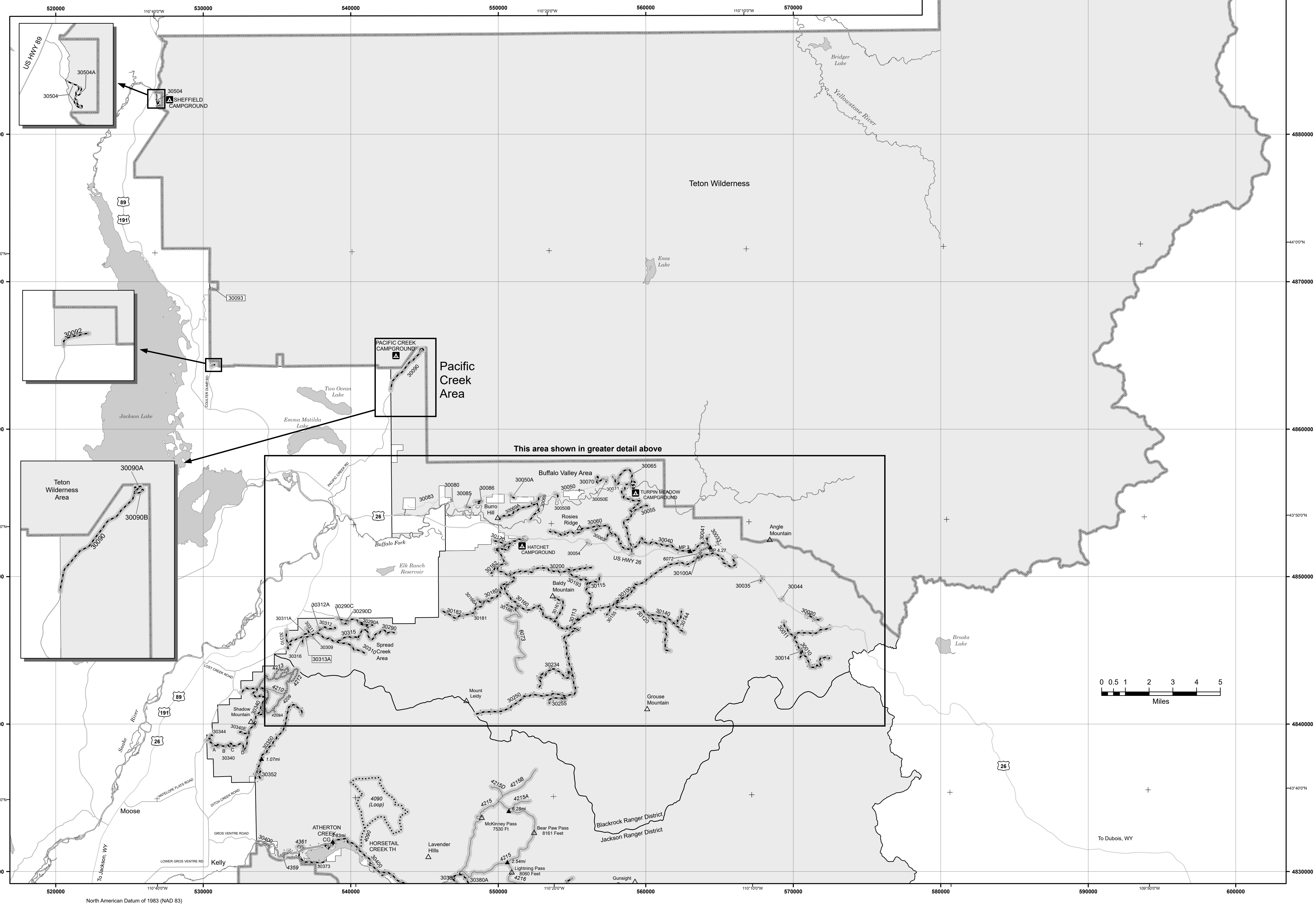
Currently, marked designated dispersed sites are located in the Toppings Lake, Flat Creek, Mosquito Creek, Phillips Ridge, Curtis Canyon, Shadow Mountain, Spread Creek, Buffalo Valley and Pacific Creek areas.



Roads Too Short to Be Seen Clearly on the Map

Route ID	Route Designation	Length in Feet
30350D	Road Open to All Vehicles	254
30313A	Road Open to All Vehicles	413

Route Number	Legend	Special Vehicle Designation	Dates Allowed	Beginning Mile Post	Ending Mile Post
6072	[Symbol]	Special Vehicle Designation, with Seasonal Designation	Trails open to Wheeled Vehicles 64" or less in width, with Seasonal Designation	06/01-11/30	
30010, 30011, 30014, 30020, 30021, 30054, 30055, 30090, 30063, 30074, 30115, 30120, 30140, 30144, 30161, 30162, 30166A, 30171, 30191, 30192, 30185, 30191, 30193, 30200, 30234, 30255, 30020A, 30097, 30069A	[Symbol]	Roads open to all Vehicles, with Seasonal Designation	Seasonal Designation	07/01-11/30	
30035, 30037, 30044, 30050, 30061, 30065, 30066, 30069, 30070, 30071, 30071A, 30085, 30086, 30090, 30092, 30100, 30100A, 30113, 30155, 30160, 30165, 30166, 30170, 30209, 30211, 30217, 30250, 30309, 30310, 30311, 30312, 30312A, 30315, 30316, 30333, 30340, 30344, 30352, 30360, 30362, 30363, 30400, 30050A, 30050B, 30050E, 30065A, 30066A, 30069B, 30069C, 30090A, 30090B, 30311A, 30313A, 30340A, 30340B, 30340C, 30340D, 30340E, 30374A	[Symbol]	Roads open to all Vehicles, with Seasonal Designation	Seasonal Designation	05/01-11/30	
30290, 30290A, 30290B, 30290C, 30290D	[Symbol]	Roads open to all Vehicles, with Seasonal Designation	Seasonal Designation	05/01-12/14	
30040	[Symbol]	Roads open to all Vehicles, with Seasonal Designation	Seasonal Designation	05/01-11/30	3.830 10.180
30350	[Symbol]	Roads open to all Vehicles, with Seasonal Designation	Seasonal Designation	05/01-11/30	0.300 1.070
30350	[Symbol]	Roads open to all Vehicles, with Seasonal Designation	Seasonal Designation	06/01-11/30	1.070 3.000
4209, 4209A, 4211, 4212, 4213	[Symbol]	Special Vehicle Designation, with Seasonal Designation	Trails open to Wheeled Vehicles 64" or less in width, with Seasonal Designation	06/01-11/30	
4090	[Symbol]	Trails open to motorcycles, with Seasonal Designation	Seasonal Designation	07/01-09/09	
4210	[Symbol]	Trails open to Wheeled Vehicles 50" or less in width, with Seasonal Designation	Seasonal Designation	06/01-11/30	
4215, 4216, 6073, 4215A, 4215B, 4215D	[Symbol]	Trails open to Wheeled Vehicles 50" or less in width, with Seasonal Designation	Seasonal Designation	07/01-11/30	
4215	[Symbol]	Trails open to Wheeled Vehicles 50" or less in width, with Seasonal Designation	Seasonal Designation	07/01-09/09	2.540 6.280



North American Datum of 1983 (NAD 83)
 Universal Transverse Mercator, zone 12