

**UNITED STATES DEPARTMENT OF AGRICULTURE
UNITED STATES FOREST SERVICE
OUACHITA NATIONAL FOREST
HOT SPRINGS, AR**

FOREST ORDER NO. OA-ONF-01-2024

OCCUPANCY AND USE (DEVELOPED RECREATION AREAS)

Pursuant to Title 16 USC § 551 and Title 36 CFR 261.50 (a) and (b) the following acts are prohibited in the Ouachita National Forest Developed Recreation Areas listed below.

It is prohibited to:

1. Be in the area (or posted part of area) in violation of posted instructions associated with scheduled fish stocking events or construction or repair work and/or seasonal closures listed on the Forest's website. 36CFR 261.53(e)
2. Camp in a single location (campsite within developed recreation area) for a period longer than fourteen (14) consecutive days. Campsite must be vacated for at least one week after the 14-day limit is reached. 36 CFR 261.58(a)
3. Use of a developed campsite by more than one (1) immediate family, or by a group of more than six (6) persons. Use of a designated double campsite by more than two (2) immediate families or by a group of more than twelve (12) persons. 36 CFR 261.58(f)
4. Park or leave a vehicle in violation of a posted sign. 36 CFR 261.58(g)
5. Possess a glass container on a swimming beach or within a designated swimming area. 36 CFR 261.58(cc)
6. Possess, park or leave more than two vehicles, except motorcycles or bicycles, per campsite unit. 36 CFR 261.58(i)
7. Camp outside designated campsites. 36 CFR 261.58(e)

THIS ORDER APPLIES TO THE FOLLOWING DEVELOPED RECREATION AREAS AS DEPICTED IN THE MAP ATTACHED HERETO AND INCORPORATED HEREIN:

- Albert Pike
- Bard Springs
- Bear Creek
- Billy Creek
- Cedar Lake
- Charlton
- Crystal
- Fourche Mountain
- Hickory Nut Mountain
- Iron Springs
- Jack Creek
- Little Pines
- Shady Lake

- South Fourche
- Winding Stair

Pursuant to 36 CFR 261.50(e) the following persons are exempt from the above prohibitions:

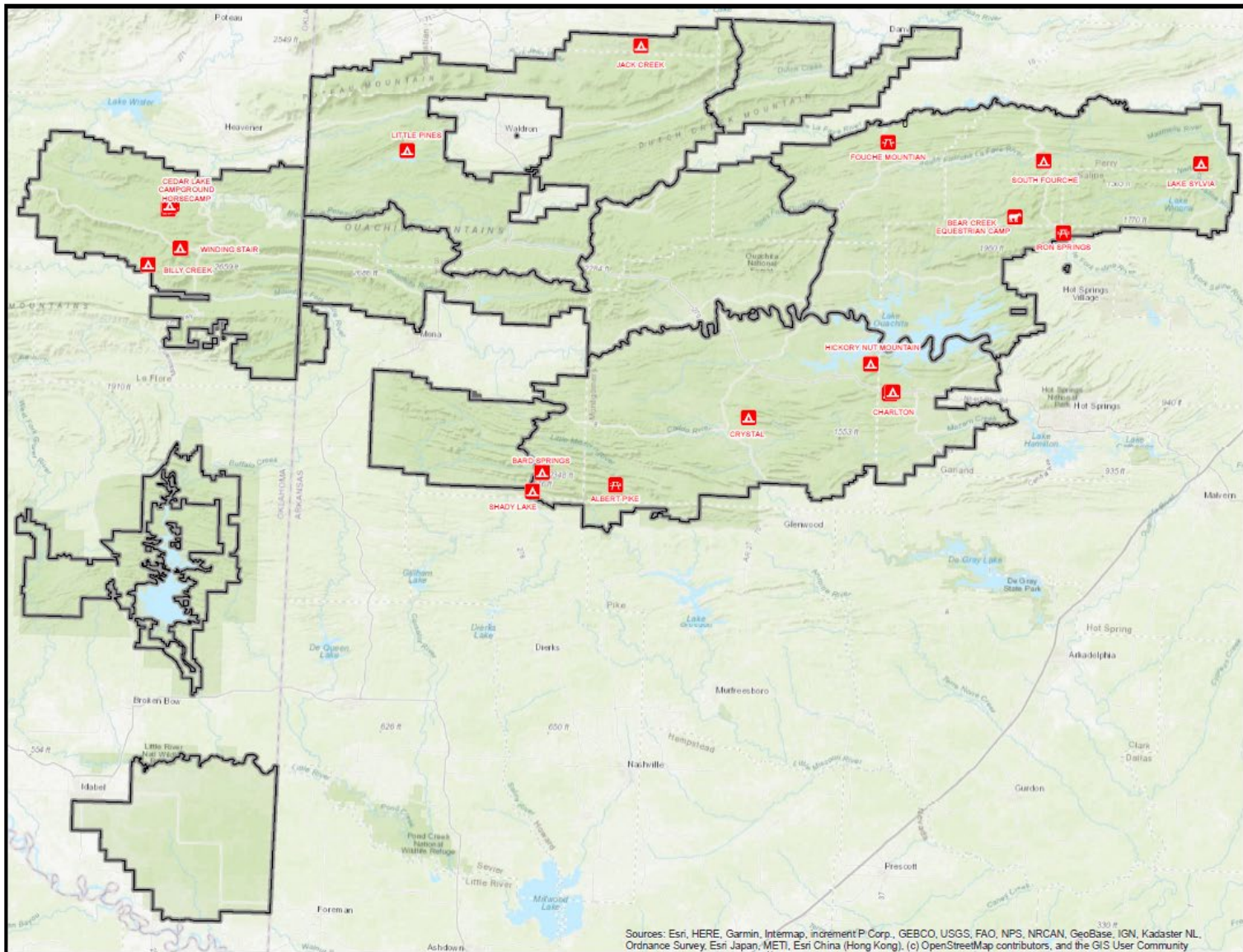
1. Persons with a permit specifically authorizing the otherwise prohibited act or omission.
2. Any Federal, State, or local officer, or member of an organized rescue or fire fighting force in the performance of their official duty.
3. Persons with a Forest Permit for Use of Roads, Trails, or Areas Restricted by Regulation or Order, Form FS-7700-48, specifically exempting them from the effect of this Order.

These prohibitions are in addition to the general prohibitions in 36 CFR Part 261, Subpart A. **This Order will expire two (2) years after the date of execution.**

Executed in Hot Springs, Arkansas, this __30th__ day of __April__, 2024.

DAN OLSEN
Forest Supervisor
Ouachita National Forest

A violation of these prohibitions is punishable by a fine of not more than \$5,000 for an individual or \$10,000 for an organization, or imprisonment for not more than 6 months, or both. 16 USC 551 and 18 USC 3559, 3571 and 3581.

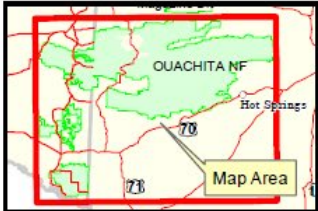


Occupancy and Use Developed Recreation Areas

Ouachita National Forest

Arkansas/Oklahoma Forest Wide

- PICNIC SITES
- CAMPGROUND
- HORSE CAMP
- Ouachita National Forest Boundary
- District Boundary



Sources: Esri, HERE, Garmin, Intermap, increment P Corp., GEBCO, USGS, FAO, NPS, NRCAN, GeoBase, IGN, Kadaster NL, Ordnance Survey, Esri Japan, METI, Esri China (Hong Kong), (c) OpenStreetMap contributors, and the GIS User Community

