

PROHIBITIONS



United States
Department of
Agriculture

ORDER OF FOREST SUPERVISOR

Forest Service
Hot Springs,
Arkansas

OUACHITA NATIONAL FOREST



ORDER NO. OA-ONF-08-2024

OCCUPANCY AND USE

PURSUANT TO THE PROVISIONS OF 16 U.S.C. SECTION 551 AND 36 CFR 261.50(a) AND (b), IT IS HEREBY ORDERED THAT THE FOLLOWING ACTS ARE PROHIBITED ON THE PONDS LISTED IN THIS ORDER: **BEAR POND, JOHN BURNS POND, MACEDONIA POND, MOSS CREEK ROAD POND, OLD FORESTER POND, STORY POND, RIFLE RANGE POND, AND WOMBLE POND,** ALL WITHIN THE OUACHITA NATIONAL FOREST. THESE PONDS ARE DEPICTED IN THE MAP(S) ATTACHED HERETO AND INCORPORATED HEREIN.

THE FOLLOWING PROHIBITED ACTS ARE SET FORTH IN 36 CFR 261.58:

261.58(n) Operating a gasoline powered boat motor.

261.58(v) Fishing with the use of trot lines, jug lines, yo-yo's or any other non-hand held fishing tackle.

PURSUANT TO 36 CFR, SECTION 261.50(e), THE FOLLOWING PERSONS ARE EXEMPT FROM THIS ORDER:

- (1) Persons with a permit specifically authorizing otherwise prohibited act or omission.
- (2) Any Federal, State, or local officer or member of an organized rescue or fire fighting force in the performance of an official duty.

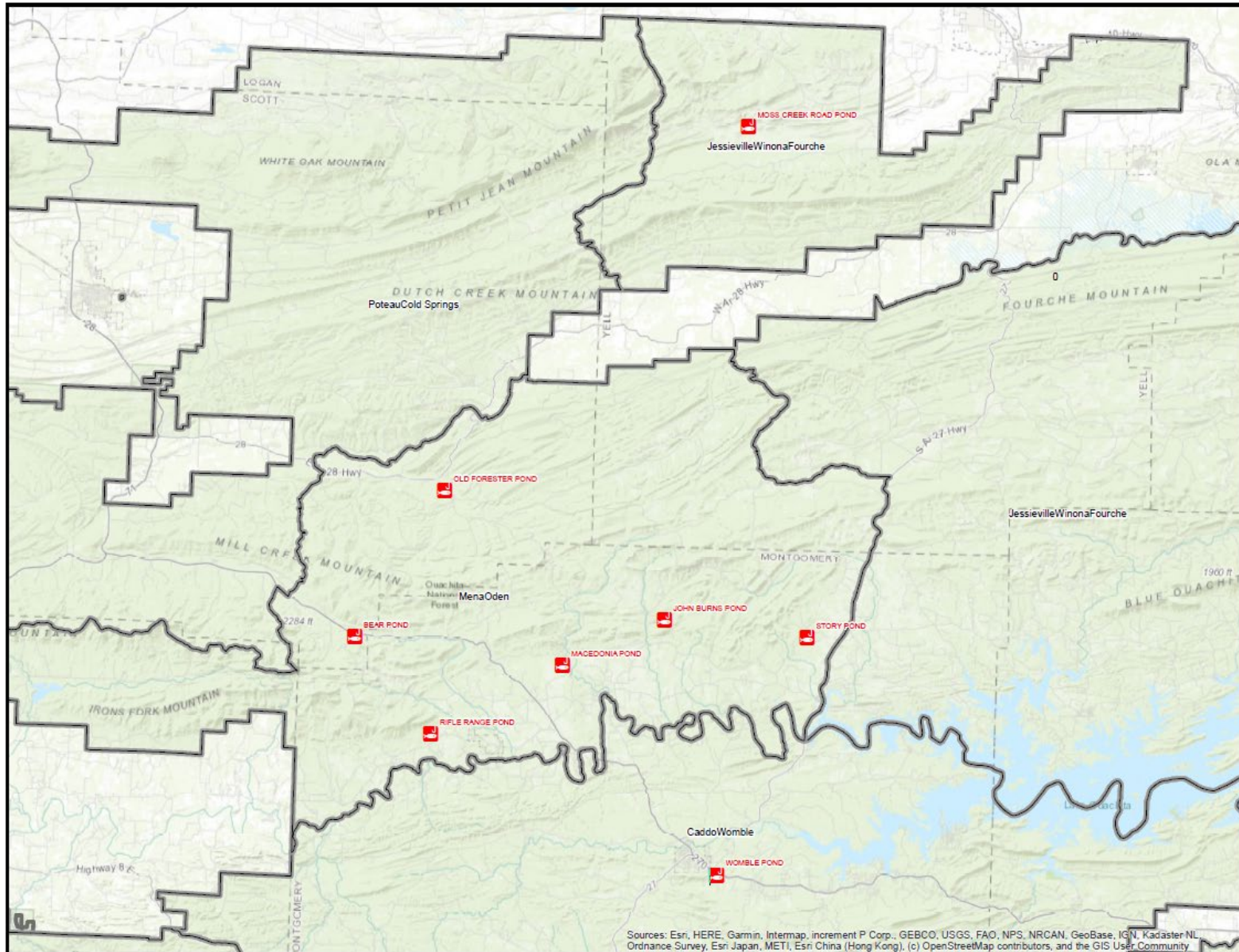
These prohibitions are in addition to the general prohibitions 36 CFR part 261, Subpart A.

THIS ORDER WILL EXPIRE TWO (2) YEARS FROM DATE OF EXECUTION

Executed in Hot Springs, Arkansas, this 1st day of May, 2024.

DAN OLSEN
Forest Supervisor

Violations of these prohibitions are punishable by a fine of not more than \$5,000 for an individual and \$10,000 for an organization, or imprisonment for not more than six months, or both. 16 USC 551 and 18 USC 3559 and 3571



Occupancy and Use Forest Ponds

Ouachita National Forest

Arkansas Forest Districts
 Jessierville-Winona-Fourche
 Caddo-Womble
 Mena-Oden

- Forest Ponds
- Ouachita National Forest Boundary
- District Boundary



Sources: Esri, HERE, Garmin, Intermap, increment P Corp., GEBCO, USGS, FAO, NPS, NRCAN, GeoBase, IGN, Kadaster NL, Ordnance Survey, Esri Japan, METI, Esri China (Hong Kong), (c) OpenStreetMap contributors, and the GIS User Community

