



**U.S. Department of Agriculture, U.S. Forest Service  
Idaho Panhandle National Forest  
Coeur d'Alene River Ranger District**

**Trail Closure**

**PROHIBITIONS**

Pursuant to 16 U.S.C. § 551 and 36 C.F.R. § 261.50 (b) the following is prohibited on the National Forest System (NFS) trails in the Coeur d'Alene River Ranger District, Idaho Panhandle National Forest, described below and shown on the attached map incorporated into this Order as Exhibit A (the "Described Trails"):

1. Being on the trail. 36 C.F.R. § 261.55(a).

**EXEMPTIONS**

Pursuant to 36 C.F.R. § 261.50(e), the following persons are exempt from this Order:

1. Persons with Forest Service Permit No. FS-7700-48 (Permit for Use of Roads, Trails, or Areas Restricted by Regulation or Order), specifically exempting them from this Order or a written determination by a Forest Service authorized officer that a permit is not required under 36 C.F.R. § 251.50(e)(1) or (2).
2. Any Federal, State, or Local Officer, or member of an organized rescue or firefighting resource in the performance of an official duty.

**DESCRIBED TRAILS**

The 3.57 mile-long 50-inch or less width motorized Huckleberry Trail #802 from the intersection with Forest Service Road 206 to the intersection with FSR 1587.

**PURPOSE**

The purpose of this Order is for the protection of public safety due to the presence of active logging operations, including tree falling removal in and around trail corridor. The Order prohibits all methods of travel (foot, mechanized, and stock) on this section of Huckleberry Trail #802.

## IMPLEMENTATION

1. This Order shall be in effect from April 30, 2024, at 0600 through July 1, 2024, at 1600, unless rescinded.
2. A map identifying the Described Trail is attached and made part of this Order as Exhibit A. For a digital version of this Order and Exhibit A, go to <https://www.fs.usda.gov/alerts/ipnf/alerts-notices>
3. Unless otherwise expressly defined in this Order, the terms used in this Order are defined by the regulations of the Secretary of Agriculture, 36 C.F.R. Chapter II, Parts 200-299. If there are terms in this Order that are not expressly defined in the Order or 36 C.F.R. Chapter II, Parts 200-299, their meaning shall be determined by their plain language definitions.
4. A violation of the above prohibitions is punishable as a Class B misdemeanor by a fine of not more than \$5,000 for individuals and \$10,000 for organizations, or by imprisonment for not more than six months, or both. 16 U.S.C. § 551; 18 U.S.C. §§ 3559, 3571, and 3581.
5. Contact the Coeur d'Alene River Ranger District in Coeur d'Alene at, (208) 664-2318, and Idaho Panhandle National Forest Supervisor's Office in Coeur d'Alene, (208) 765-7223, for more information about this Order.
6. This Order supersedes any previous Orders prohibiting the same or similar acts on the same Described Trail.

Signed and issued on Tuesday, April 30, 2024.

---

Forest Supervisor  
Idaho Panhandle National Forests



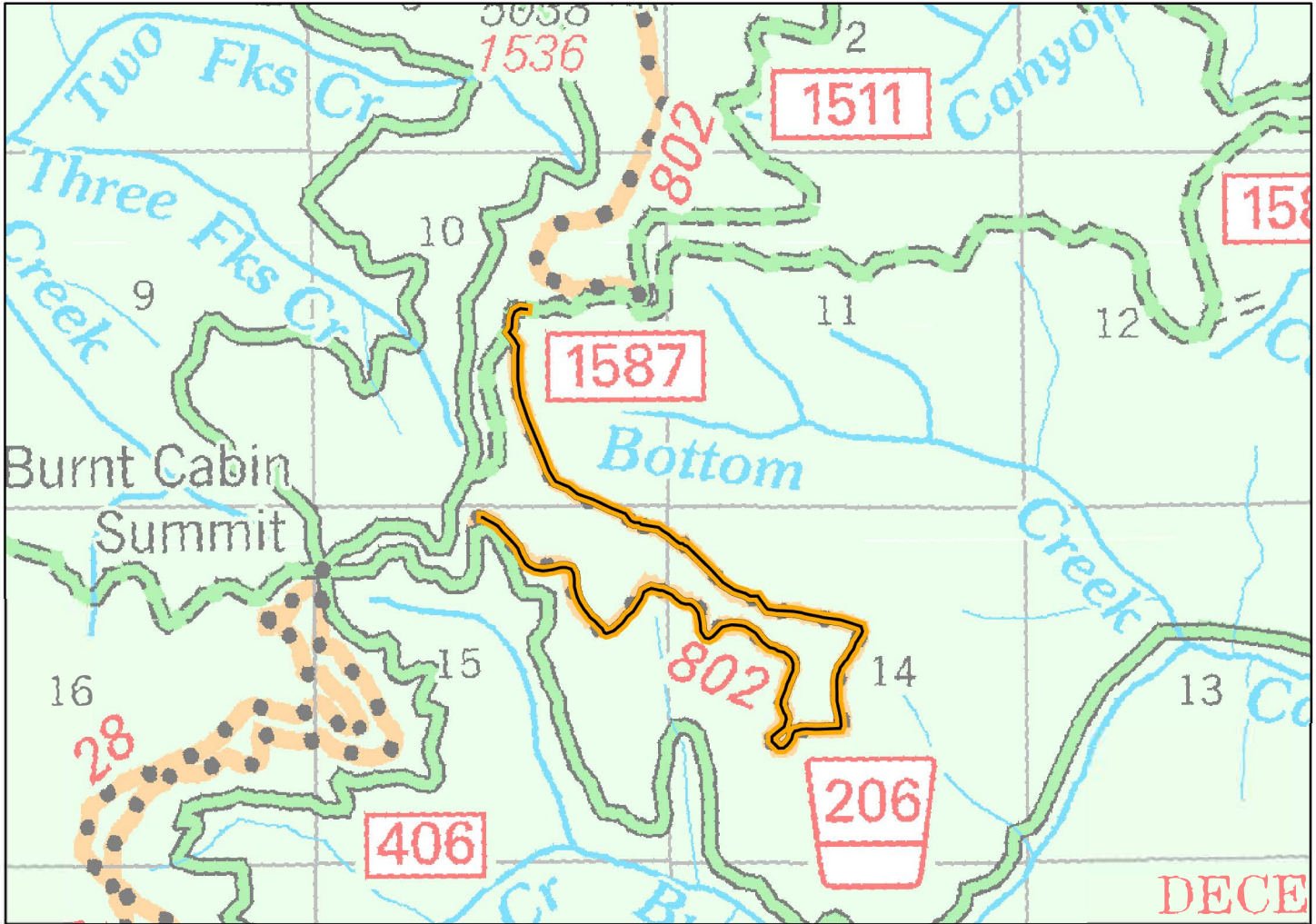
# Idaho Panhandle National Forests



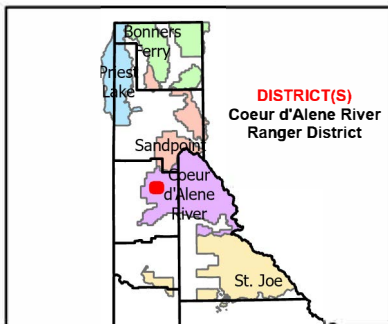
**Forest Closure: Trail 802 Closure**  
**Order Number: 01-04-03-24-002**

Effective Date : **April 30th, 2024**  
Rescind Date : **July 1st, 2024**

## Exhibit A



### IDAHO KOOTENAI COUNTY



Closed Trail Numbers:  
-802

Closures  
— Trail

