





# Aerial Detection Survey 2023

## Significant Pest/Disease Activity

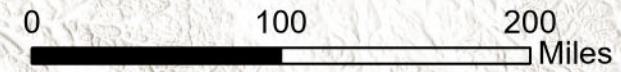
-  Spruce Beetle  
90,127 Acres
-  Aspen Leafminer  
80,569 Acres
-  Western Blackheaded Budworm  
62,987 Acres
-  Hemlock Mortality  
28,693 Acres
-  Yellow-Cedar Decline  
20,145 Acres
-  Alder Defoliation  
11,089 Acres
-  Spruce Needle Rust  
8,213 Acres

## Land Cover

-  Conifer Forest
-  Mixed/Broadleaf Forest
-  Inland Lake
-  Survey route

Note: Activity polygons are enhanced with a large border to aid visualization.

Many of the most destructive diseases are not represented on the map due to these agents not being detectable from aerial surveys.

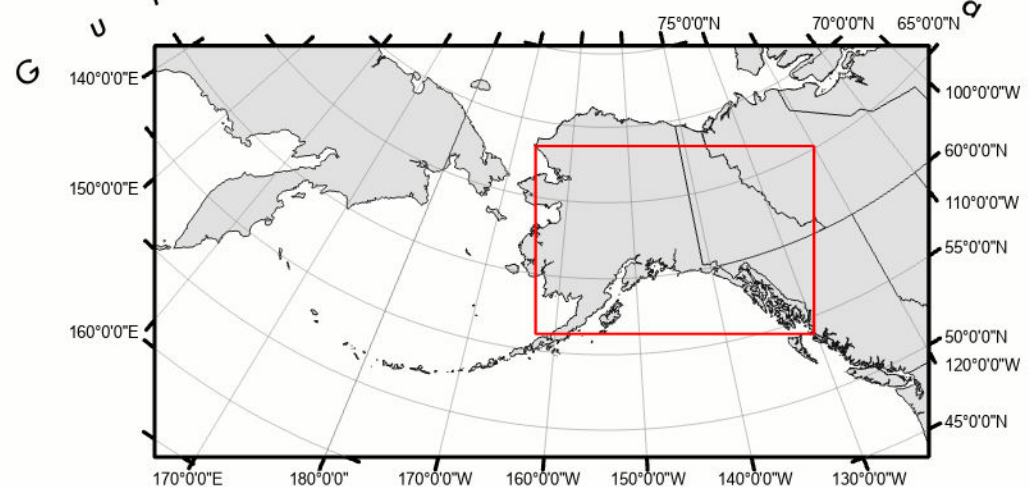
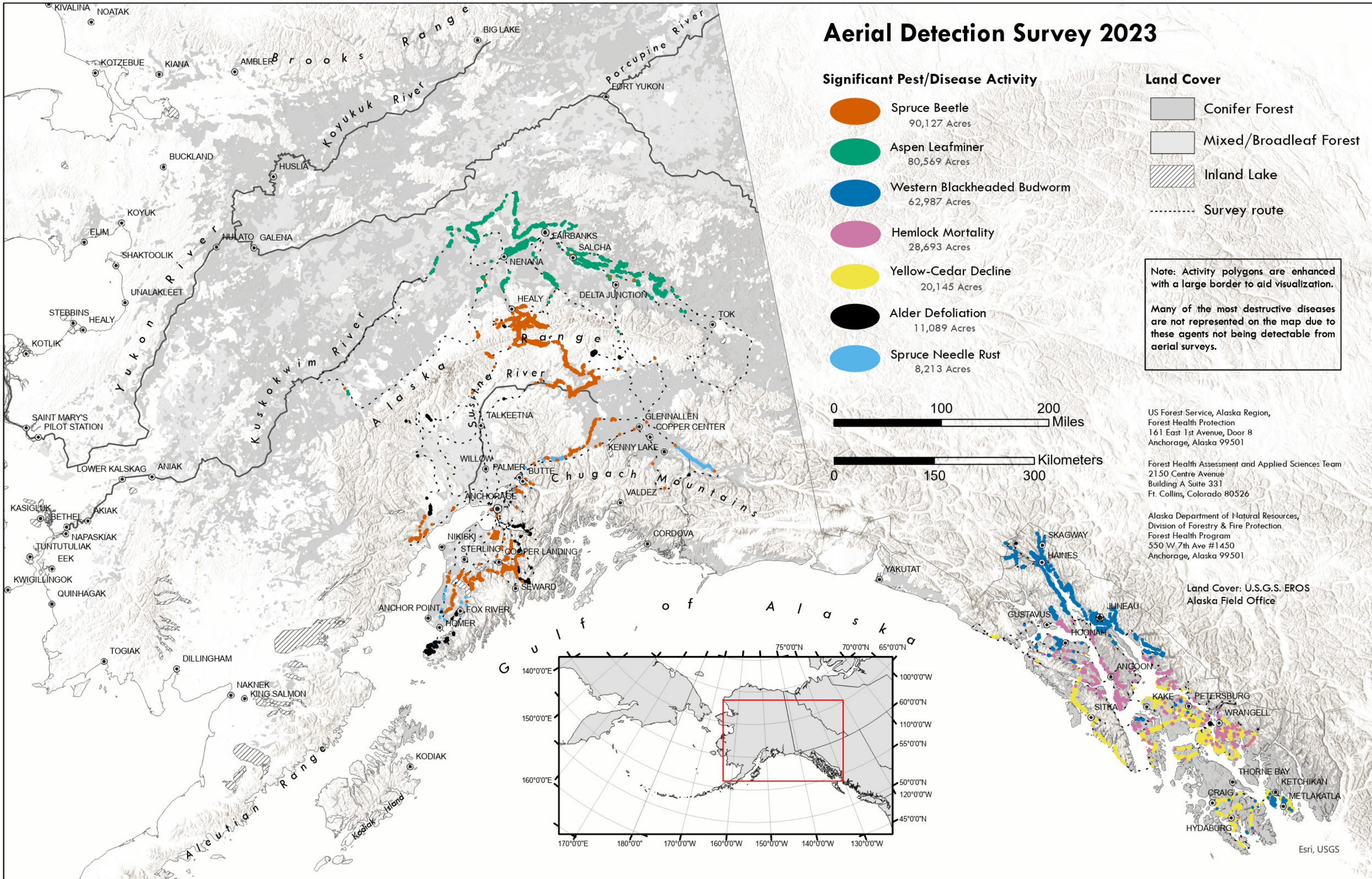


US Forest Service, Alaska Region,  
Forest Health Protection  
161 East 1st Avenue, Door 8  
Anchorage, Alaska 99501

Forest Health Assessment and Applied Sciences Team  
2150 Centre Avenue  
Building A Suite 331  
Ft. Collins, Colorado 80526

Alaska Department of Natural Resources,  
Division of Forestry & Fire Protection  
Forest Health Program  
550 W 7th Ave #1450  
Anchorage, Alaska 99501

Land Cover: U.S.G.S. EROS  
Alaska Field Office



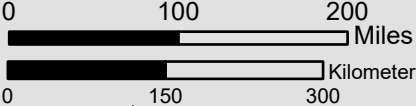
# Aerial Detection Survey Flight Paths 2023

 Surveied Area

Management Agency                      Surveied Acres

	State of Alaska	6,822,000
	US Forest Service	3,923,000
	Native	1,833,000
	National Park Service	1,335,000
	Local Government and Private	832,000
	Bureau of Land Management	795,000
	US Fish and Wildlife Service	759,000
	Department of Defense	355,000
	Wild and Scenic River	77,000

Total Acres Surveied    16,731,000



US Forest Service, Alaska Region,  
Forest Health Protection  
161 East 1st Avenue, Door 8  
Anchorage, Alaska 99501

Forest Health Assessment and Applied Sciences Team  
2150 Centre Avenue  
Building A Suite 331  
Ft. Collins, Colorado 80526

Alaska Department of Natural Resources,  
Division of Forestry & Fire Protection  
Forest Health Program  
550 W 7th Ave #1450  
Anchorage, Alaska 99501

