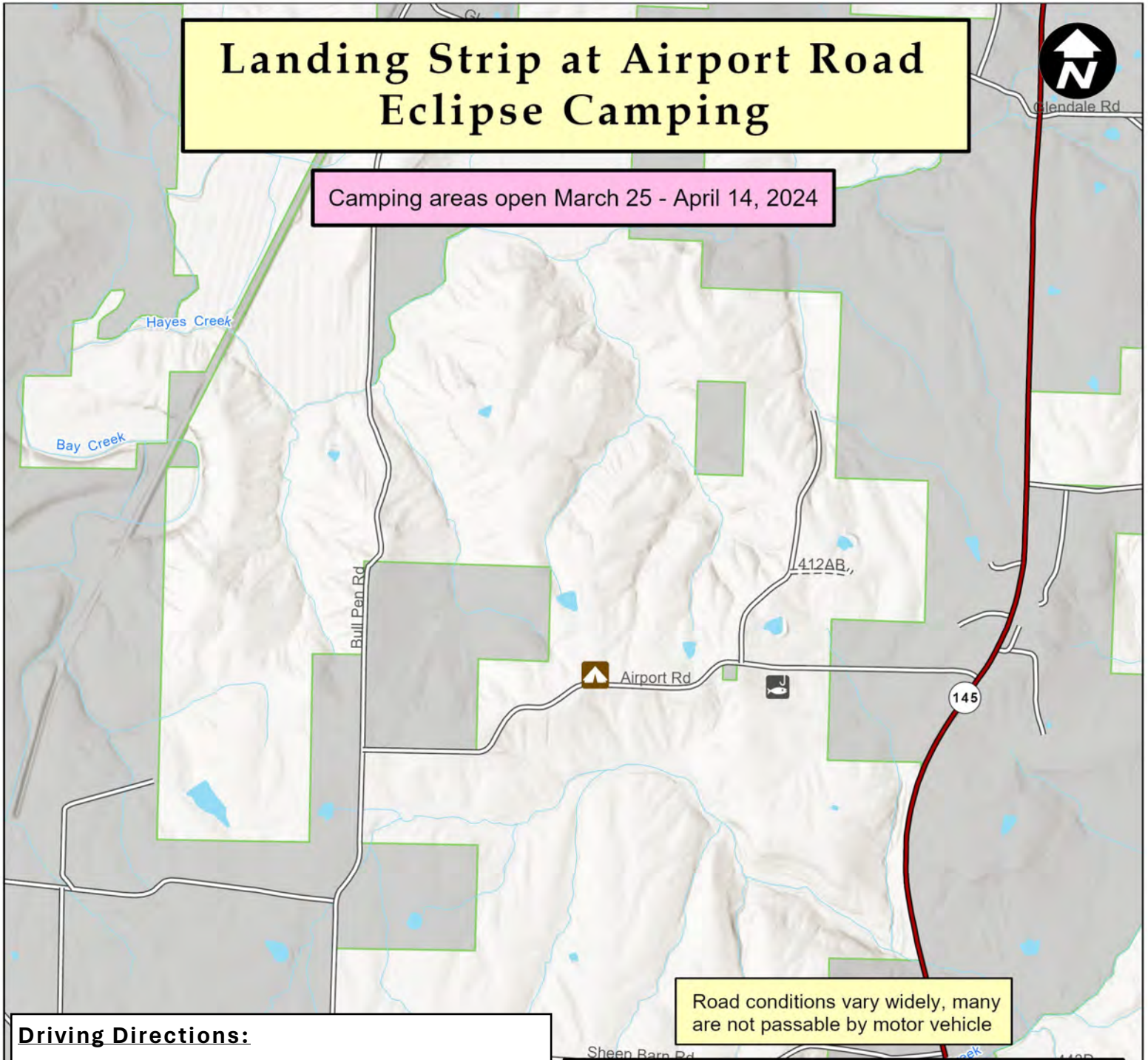


Landing Strip at Airport Road Eclipse Camping



Camping areas open March 25 - April 14, 2024



Driving Directions:

From Harrisburg: Take Highway 145 south 24.4 miles to Airport Road. Turn right onto Airport Rd. for 1 mile. The Landing Strip Camping will be on your right.

From Vienna: From Interstate 24, take exit 16; go east on State Hwy 146 for 13 miles to where it intersects with Hwy 145. Turn right and right again to take Hwy 145 north. Proceed on Hwy 145 north for 3.4 miles to Airport Road. Turn left onto Airport Rd. for 1 mile. The Landing Strip Camping will be on your right.

Road conditions vary widely, many are not passable by motor vehicle

Legend

jlvaghn 3/8/2024

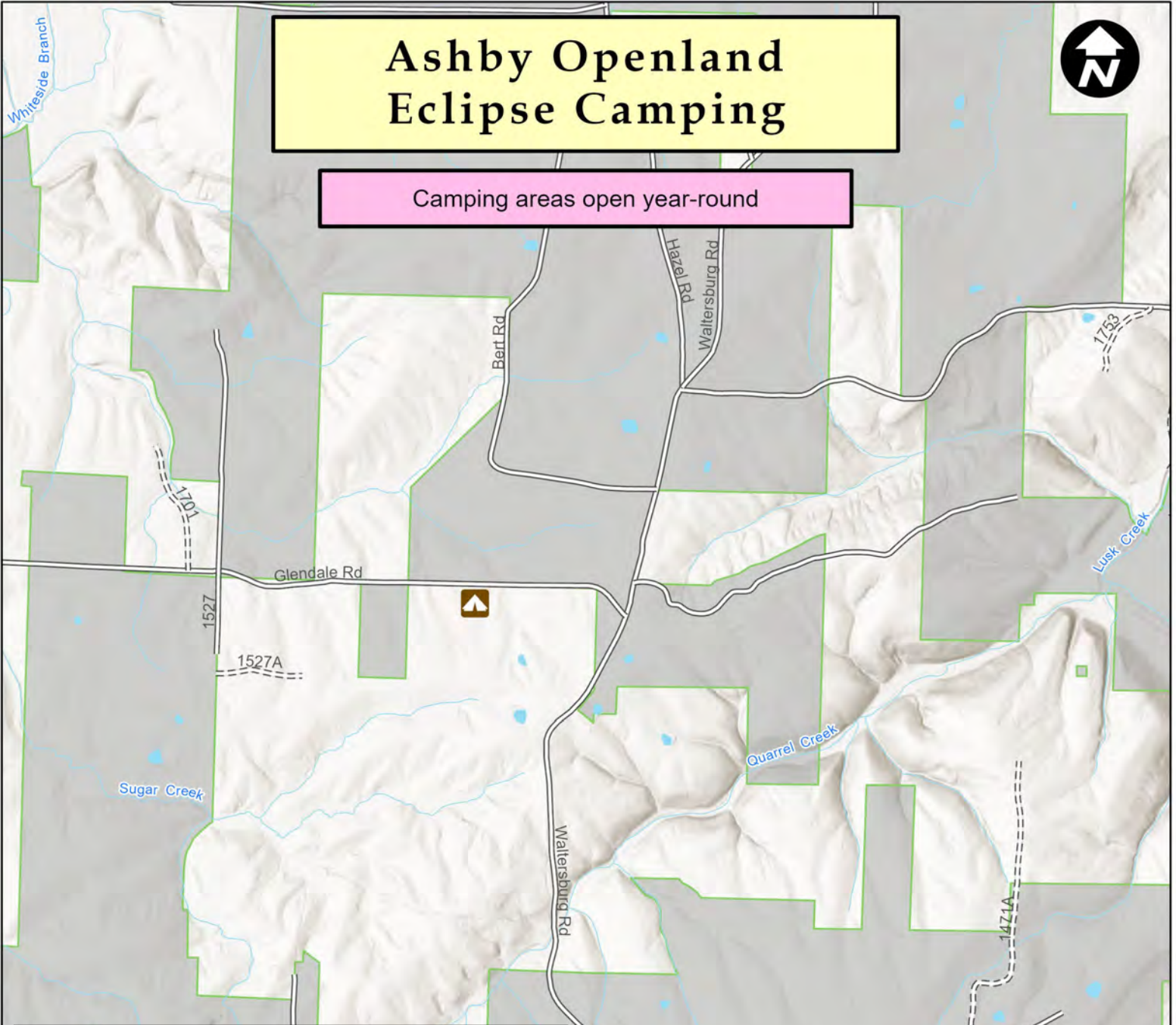
- Dispersed Camping
- Fishing Site
- Highway
- Road
- Road (Seasonally Closed)
- Stream
- Pond
- National Forest Land
- Non-National Forest Land

0 0.25 0.5 1 Miles



Ashby Openland Eclipse Camping

Camping areas open year-round



Driving Directions:

From Harrisburg: Take Highway 145 south 18.5 miles to Waltersburg Road. Take a left turn and proceed south on Waltersburg Rd. for 3 miles; then right onto Glendale Road. In a quarter mile Ashby Tract Camping will be on your left.

From Vienna: From Interstate 24, take exit 16; go east on State Hwy 146 for 18.5 miles to Waltersburg Road. Take a left turn and proceed on Waltersburg north for 5 miles to Glendale Road. Turn left onto Glendale Road. In a quarter mile Ashby Tract Camping will be on your left.

Road conditions vary widely, many are not passable by motor vehicle

jivaughn 4/5/2024

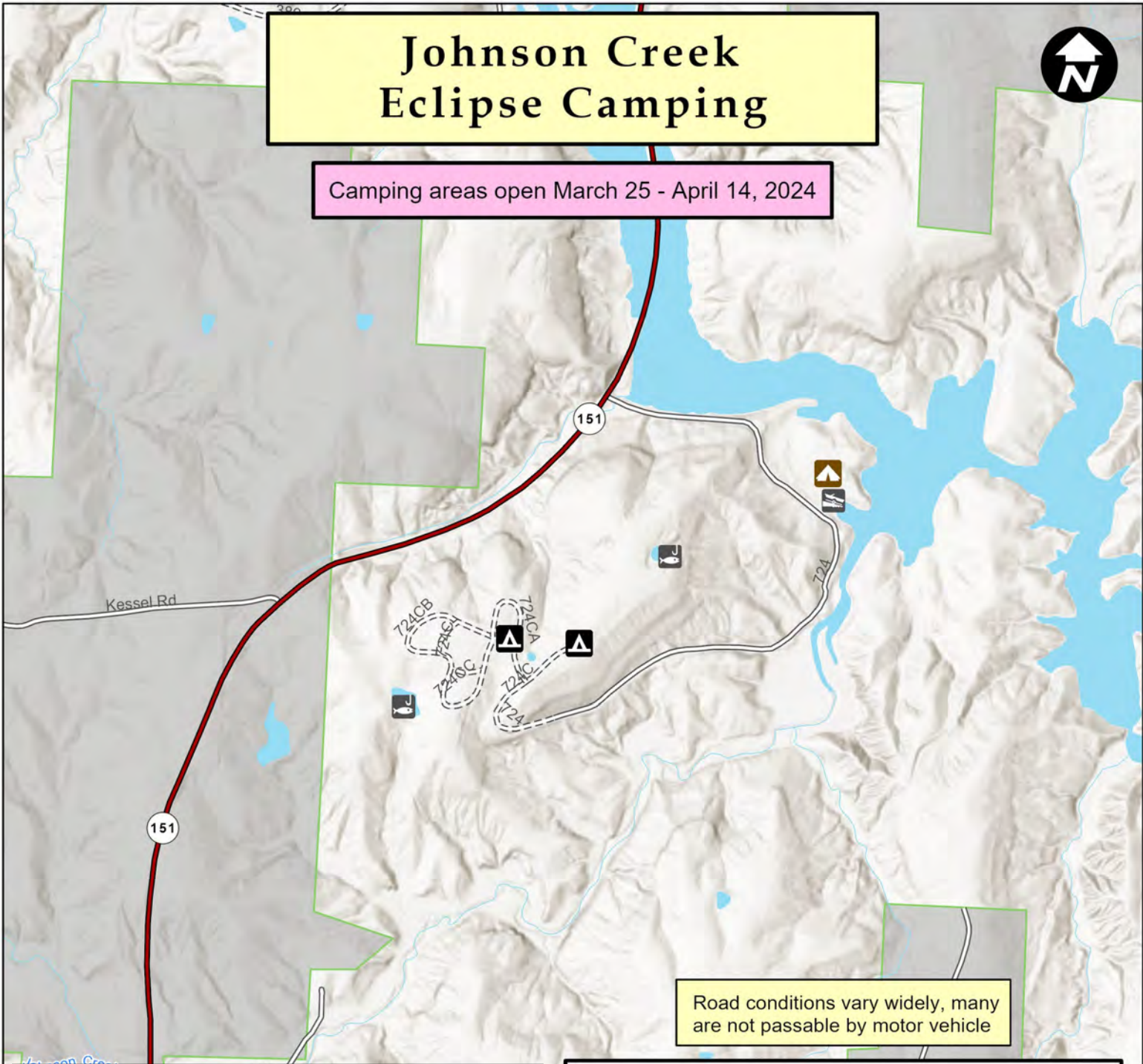
Legend

Dispersed Camping	Stream
Road	National Forest Land
Road (Seasonally Closed)	Non-National Forest Land

0 0.25 0.5 1
Miles

Johnson Creek Eclipse Camping

Camping areas open March 25 - April 14, 2024



Driving Directions:

From Murphysboro: Take Hwy 149 west 7 miles to Hwy 3; then north 4.5 miles on Hwy 3 to Hwy 151. Turn right onto Hwy 151 and go 4 miles to recreation area.

From St. Louis, MO: Take either Highway 3 or Hwy 4 south to Chester, IL. Then south 18 miles on Hwy 3; turn left onto Hwy 151 and go 4 miles to recreation area.

jlvaghn 3/8/2024

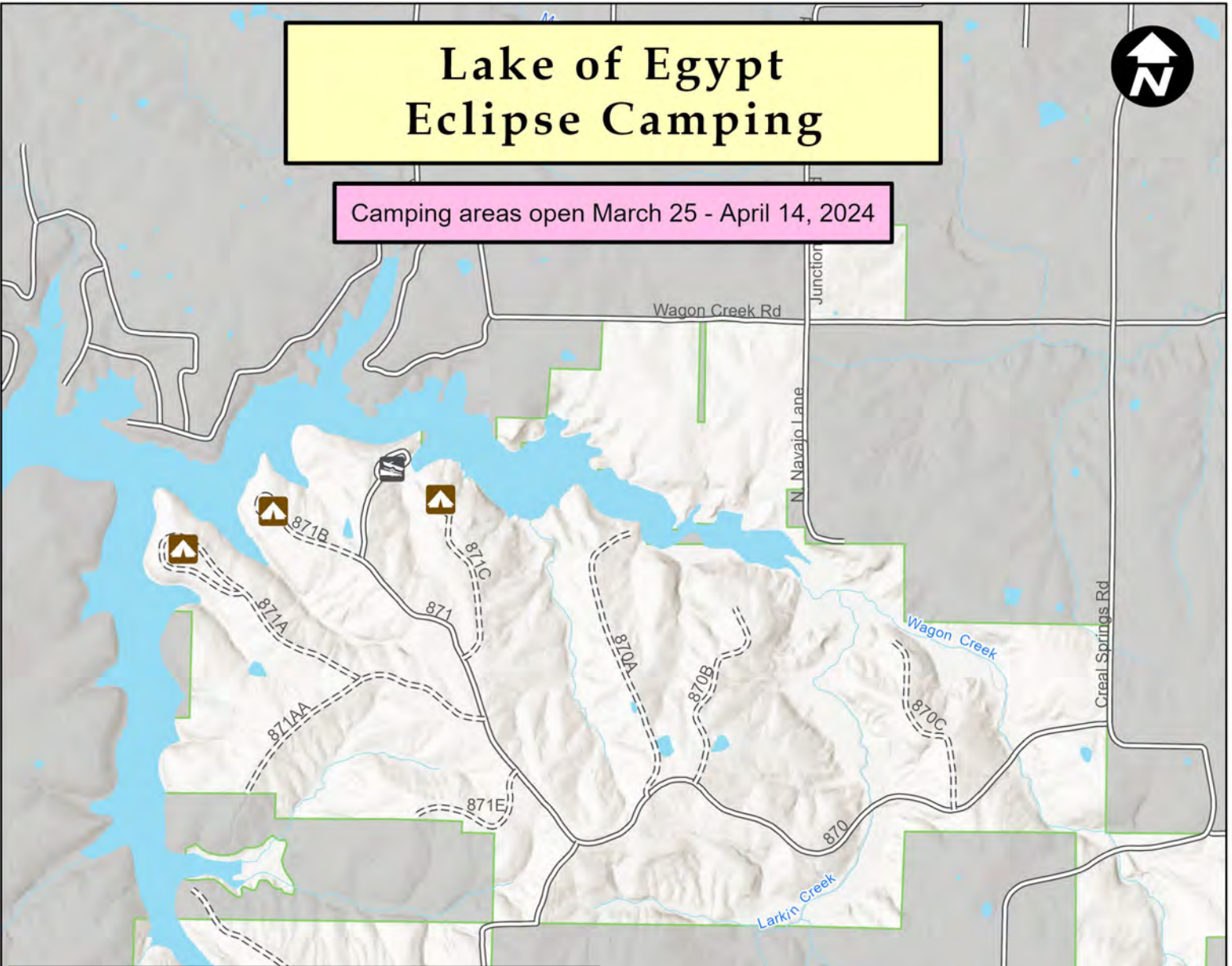
Legend

- Campground
 - Dispersed Camping
 - Boat Launch
 - Fishing Site
 - Highway
 - Road
 - Road (Seasonally Closed)
 - Stream
 - Pond
 - National Forest Land
 - Non-National Forest Land
- 0 0.25 0.5 Miles

The Forest Service uses the most current and complete data available. GIS data and product accuracy may vary. They may be: developed from sources of differing accuracy, accurate only at certain scales, based on modeling or interpretation, incomplete while being created or revised, etc. Using GIS products for purposes other than those for which they were created, may yield inaccurate or misleading results. The Forest Service reserves the right to correct, update, modify, or replace GIS products without notification. The Forest Service will not be liable for any activity involving this information. USDA is an equal opportunity provider and employer.

Lake of Egypt Eclipse Camping

Camping areas open March 25 - April 14, 2024



Driving Directions:

From Marion: Go east on State Route 13 for 5 miles to Hwy 166, then south (right) onto Hwy 166 for 8.5 miles to Creal Springs Road. Turn south (right) onto Creal Springs Rd., go 3 miles to Recreation Road (#870 on this map). Turn right (west) onto Recreation Road for 2 miles to the Lake of Egypt Camping.

From Paducah, KY: Travel west on Interstate 24 (I-24) into Illinois for 35 miles to Exit 14. Take Exit 14 and turn right onto Hwy 45 north. Go 5.5 miles north to Tunnel Hill Road, then turn northwest (left) onto Tunnel Hill Rd. for about 1 mile to Creal Springs Rd. Turn right onto Creal Springs Rd. and go 4 miles to Recreation Road (#870 on this map). Turn left (west) onto Recreation Road for 2 miles to the Lake of Egypt Camping Areas.

Road conditions vary widely, many are not passable by motor vehicle

jlvaughn 3/8/2024

Legend

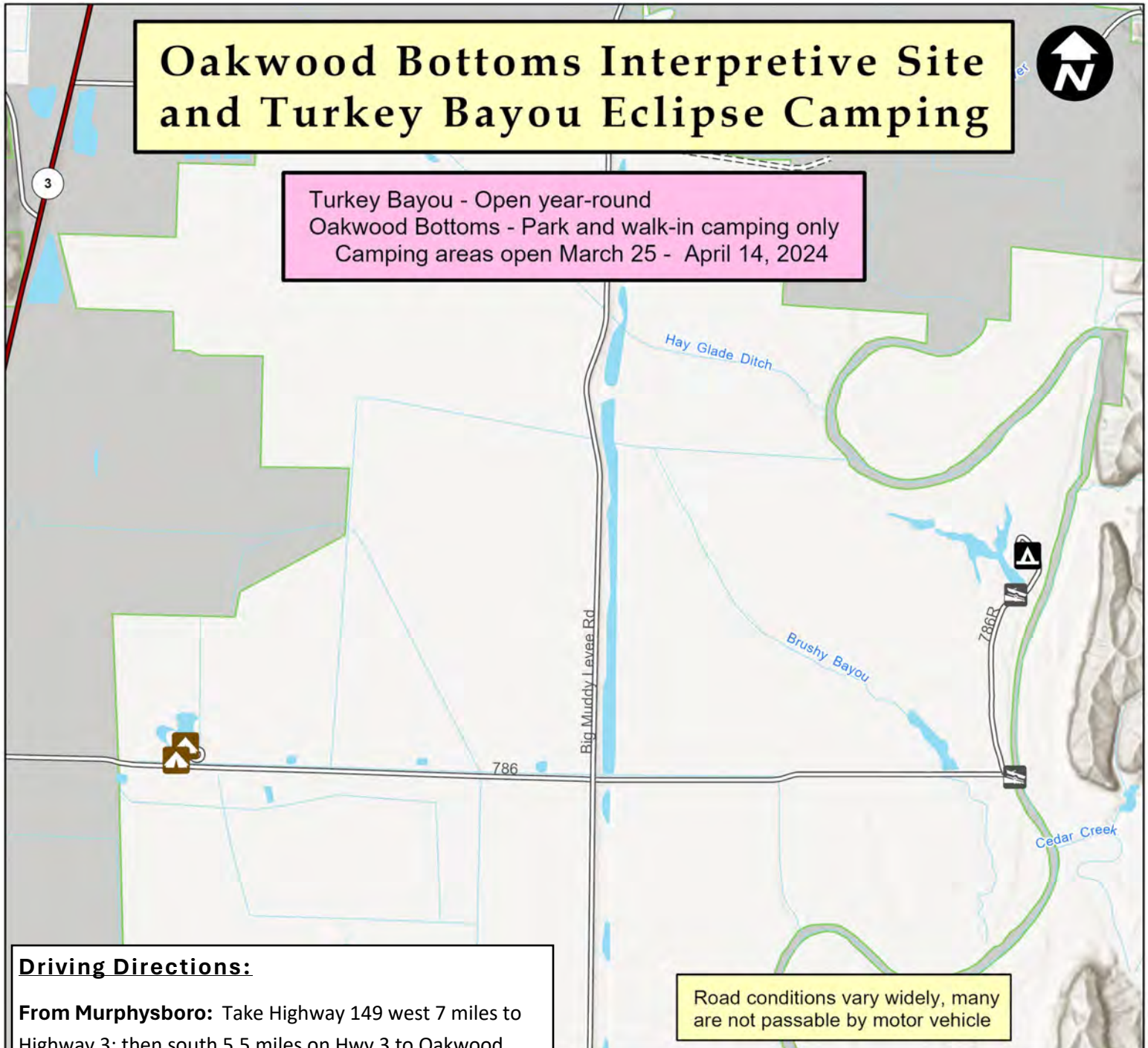
Dispersed Camping	Stream
Boat Launch	Pond
Road	National Forest Land
Road (Seasonally Closed)	Non-National Forest Land

0 0.25 0.5 1 Miles

Oakwood Bottoms Interpretive Site and Turkey Bayou Eclipse Camping



Turkey Bayou - Open year-round
Oakwood Bottoms - Park and walk-in camping only
Camping areas open March 25 - April 14, 2024



Driving Directions:

From Murphysboro: Take Highway 149 west 7 miles to Highway 3; then south 5.5 miles on Hwy 3 to Oakwood Bottoms Road. Turn east (left) onto Oakwood Bottoms Rd. and go 2 miles to the Oakwood Bottoms Interpretive Site Camping or 4 miles to Turkey Bayou Campground.

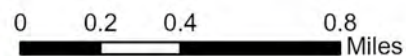
From Jonesboro: Take Highway 146 west 8 miles to Highway 3, then north 8 miles on Hwy 3 to Oakwood Bottoms Road. Turn east (right) onto Oakwood Bottoms Rd. and go 2 miles to the Oakwood Bottoms Interpretive Site Camping or 4 miles to Turkey Bayou Campground.

Road conditions vary widely, many are not passable by motor vehicle

jlvbaughn 3/8/2024

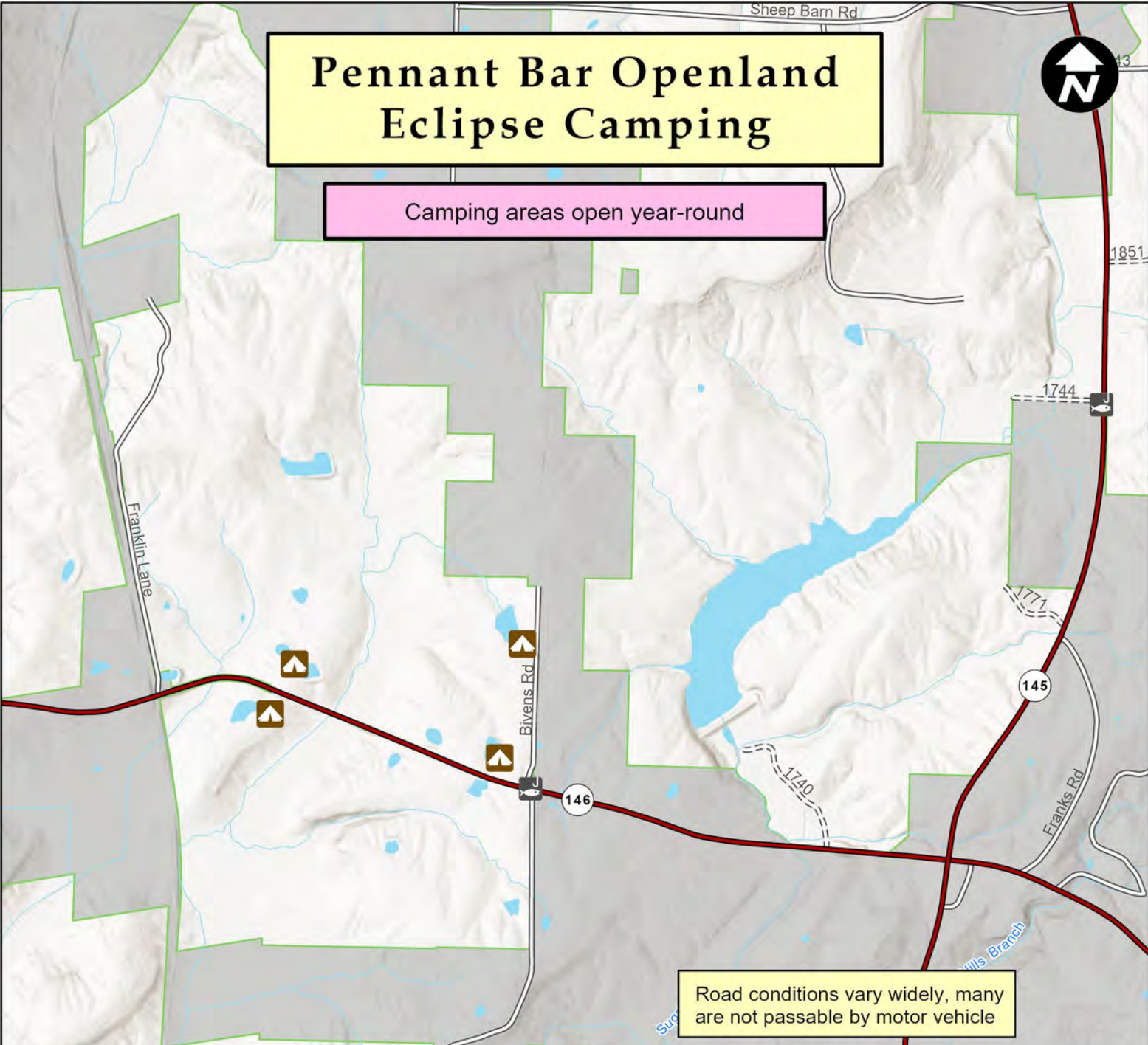
Legend

- Campground
- Dispersed Camping
- Boat Launch
- Highway
- Road
- Road (Seasonally Closed)
- Stream
- Pond
- National Forest Land
- Non-National Forest Land



Pennant Bar Openland Eclipse Camping

Camping areas open year-round



Road conditions vary widely, many are not passable by motor vehicle

Driving Directions:

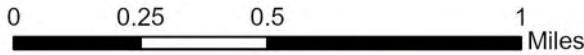
From Harrisburg: Take Highway 145 south 28 miles to intersection of Hwy 146 West. Turn left and then left again to get onto Hwy 146 West. Proceed west on Hwy 146 for about 1 mile. Pennant Bar Camping will be on both sides of Hwy 146.

From Vienna: From Interstate 24, take exit 16; go east on State Hwy 146 for 10 miles. Pennant Bar Camping will be on both sides of Hwy 146.

jlvaughn 3/8/2024

Legend

- Dispersed Camping
- Fishing Site
- Highway
- Road
- Road (Seasonally Closed)
- Stream
- Pond
- National Forest Land
- Non-National Forest Land

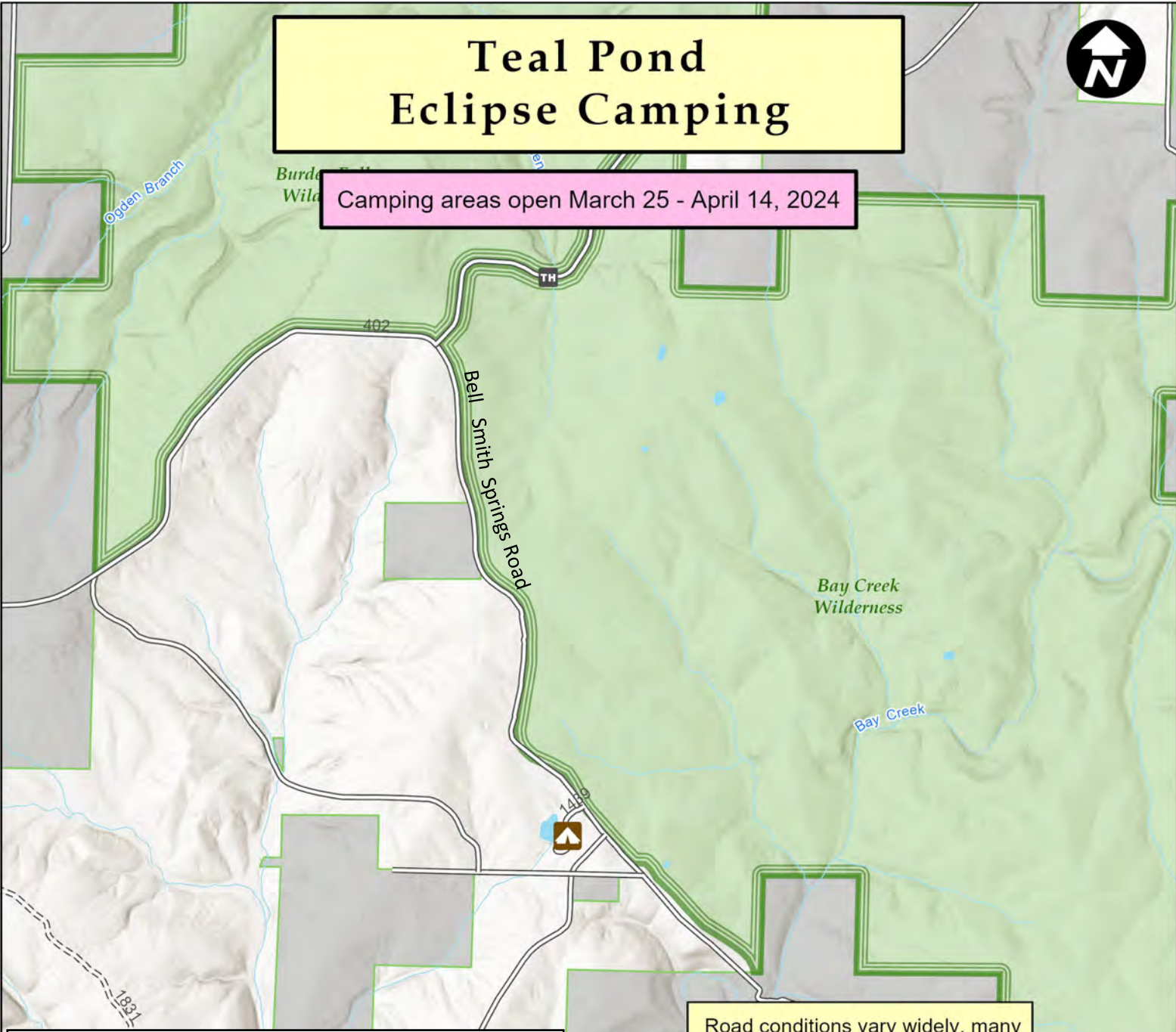


The Forest Service uses the most current and complete data available. GIS data and product accuracy may vary. They may be: developed from sources of differing accuracy, accurate only at certain scales, based on modeling or interpretation, incomplete while being created or revised, etc. Using GIS products for purposes other than those for which they were created, may yield inaccurate or misleading results. The Forest Service reserves the right to correct, update, modify, or replace GIS products without notification. The Forest Service will not be liable for any activity involving this information. USDA is an equal opportunity provider and employer.

Teal Pond Eclipse Camping



Camping areas open March 25 - April 14, 2024



Driving Directions:

From Harrisburg: Take Highway 145 south 11 miles to Burden Falls Road. Turn right, go 5 miles to Ozark Rd. Turn south (left) at the "Y" and proceed 1 mile on Bell Smith Springs Rd. Teal Pond Camping will be on the right side of the road near the entrance road for Bell Smith Springs Recreation Area.

From Vienna: Take Highway 45 north 12 miles to Ozark Road. Turn east (right). Go 10 miles to Bell Smith Springs Rd. Teal Pond Camping will be on the right side of the road near the entrance road for Bell Smith Springs Recreation Area.

Road conditions vary widely, many are not passable by motor vehicle

jlvaghn 3/8/2024

Legend

Dispersed Camping	Stream
Trailhead	Wilderness
Road	National Forest Land
Road (Seasonally Closed)	Non-National Forest Land

0 0.25 0.5 1 Miles

The Forest Service uses the most current and complete data available. GIS data and product accuracy may vary. They may be: developed from sources of differing accuracy, accurate only at certain scales, based on modeling or interpretation, incomplete while being created or revised, etc. Using GIS products for purposes other than those for which they were created, may yield inaccurate or misleading results. The Forest Service reserves the right to correct, update, modify, or replace GIS products without notification. The Forest Service will not be liable for any activity involving this information. USDA is an equal opportunity provider and employer.