



United States Department of Agriculture

---

# **Administrative Change**

## **Helena – Lewis and Clark National Forest**

### **2021 Land Management Plan**

**The Helena – Lewis and Clark National Forest is in central Montana and includes approximately 2,883,227 acres in portions of the following counties: Broadwater, Cascade, Chouteau, Fergus, Gallatin, Glacier, Golden Valley, Jefferson, Judith Basin, Lewis and Clark, Meagher, Park, Pondera, Powell, Sweet Grass, Teton, and Wheatland.**



In accordance with Federal civil rights law and U.S. Department of Agriculture (USDA) civil rights regulations and policies, the USDA, its Agencies, offices, and employees, and institutions participating in or administering USDA programs are prohibited from discriminating based on race, color, national origin, religion, sex, gender identity (including gender expression), sexual orientation, disability, age, marital status, family/parental status, income derived from a public assistance program, political beliefs, or reprisal or retaliation for prior civil rights activity, in any program or activity conducted or funded by USDA (not all bases apply to all programs). Remedies and complaint filing deadlines vary by program or incident.

Persons with disabilities who require alternative means of communication for program information (e.g., Braille, large print, audiotape, American Sign Language, etc.) should contact the responsible Agency or USDA's TARGET Center at (202) 720-2600 (voice and TTY) or contact USDA through the Federal Relay Service at (800) 877-8339. Additionally, program information may be made available in languages other than English.

To file a program discrimination complaint, complete the USDA Program Discrimination Complaint Form, AD-3027, found online at [http://www.ascr.usda.gov/complaint\\_filing\\_cust.html](http://www.ascr.usda.gov/complaint_filing_cust.html) and at any USDA office or write a letter addressed to USDA and provide in the letter all of the information requested in the form. To request a copy of the complaint form, call (866) 632-9992. Submit your completed form or letter to USDA by: (1) mail: U.S. Department of Agriculture, Office of the Assistant Secretary for Civil Rights, 1400 Independence Avenue, SW, Washington, D.C. 20250-9410; (2) fax: (202) 690-7442; or (3) email: [program.intake@usda.gov](mailto:program.intake@usda.gov).

USDA is an equal opportunity provider, employer and lender.

# **Administrative Change**

## **Helena – Lewis and Clark National Forest**

### **2021 Land Management Plan**

The Helena – Lewis and Clark National Forest is in central Montana and includes approximately 2,883,227 acres in portions of the following counties: Broadwater, Cascade, Chouteau, Fergus, Gallatin, Glacier, Golden Valley, Jefferson, Judith Basin, Lewis and Clark, Meagher, Park, Pondera, Powell, Sweet Grass, Teton, and Wheatland.

**Lead Agency:**

USDA Forest Service

**Responsible Official:**

Emily Platt, Forest Supervisor  
2880 Skyway Drive  
Helena, MT 59601

**For information, contact:**

Deborah Entwistle, Forest Planner  
2880 Skyway Drive  
Helena, MT 59601

**Project website:** [www.fs.usda.gov/goto/hlc/forestplanrevision](http://www.fs.usda.gov/goto/hlc/forestplanrevision)

Page intentionally left blank.

## Table of Contents

Overview ..... 1

Changes by Geographic Area ..... 1

    Big Belts Geographic Area ..... 1

    Divide Geographic Area ..... **Error! Bookmark not defined.**

    Elkhorns Geographic Area ..... **Error! Bookmark not defined.**

    Little Belts Geographic Area ..... **Error! Bookmark not defined.**

    Rocky Mountain Geographic Area ..... 1

    Snowies Geographic Area ..... **Error! Bookmark not defined.**

Contact Person ..... 1

Signature and Date ..... 1

## List of Acronyms

BLM	Bureau of Land Management
EIS	Environmental Impact Statement
ESA	Endangered Species Act
HLC NF	Helena-Lewis and Clark National Forest
MVUM	Motor Vehicle Use Map
ROS	Recreation Opportunity Spectrum
ROSW	Winter Recreation Opportunity Spectrum
SIO	Scenic Integrity Objective
USDA	United States Department of Agriculture
USFS	United States Forest Service

Page intentionally left blank.

## Overview

The Helena-Lewis and Clark National Forest is making an administrative change to three of the Forest Geographic Areas where lands were added or removed after the publishing of the 2021 Land Management Plan. These changes are minor in the context of the 2.8+ million-acre forest and do not alter conclusions made in the programmatic EIS supporting the land management plan. The administrative change is summarized below. This change will be effective as of April 1, 2024. The maps are attached to this document. The added acres will take on the administrative designations of the nearest USFS land. Forestwide and associated Geographic Area direction will be applied to the acquisitions with this administrative change.

## Changes by Geographic Area

### Big Belts Geographic Area

- 160 acres were added to Geographic Area. They are Bureau of Land Management (BLM) lands that were given to the Forest Service to manage.
- A small 0.004-acre parcel that was within the Geographic Area boundary was removed from the Geographic Area.

### Rocky Mountain Geographic Area

- 426 acres that were acquired by the USFS have been added to the Geographic Area.

### Upper Blackfoot Geographic Area

- 71 acres with private ownership were removed from the Geographic Area.

## Contact Person

For additional information concerning these changes, please contact Deborah Entwistle, Planning and Resources Staff Officer at Helena – Lewis and Clark National Forest- Forest Supervisor’s Office, 2880 Skyway Drive, Helena, MT or by phone at (406) 449-5201.

## Signature and Date

---

EMILY PLATT  
Forest Supervisor  
Helena – Lewis and Clark National Forest

---

DATE

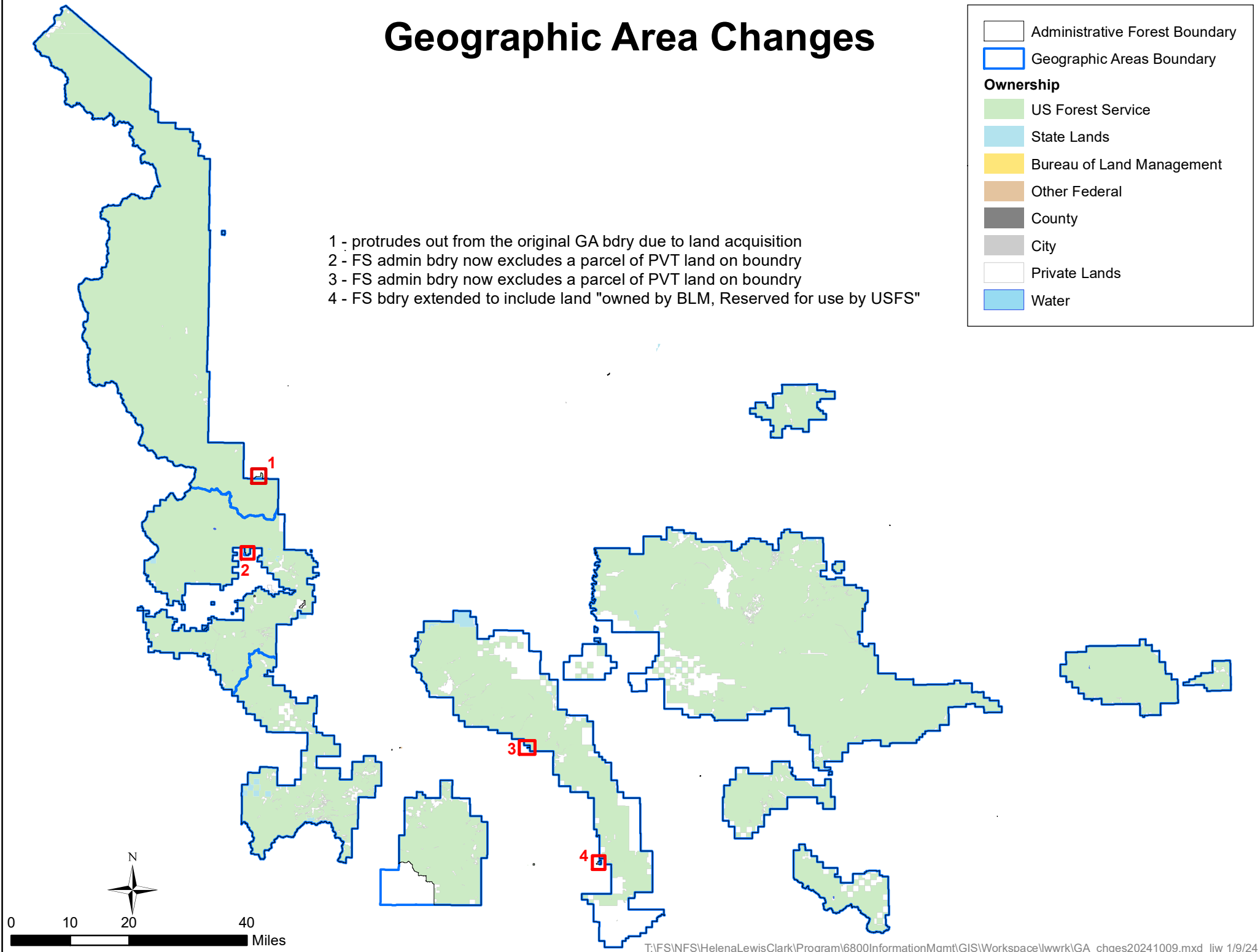
Page intentionally left blank.



# Geographic Area Changes

- Administrative Forest Boundary
- Geographic Areas Boundary
- Ownership**
  - US Forest Service
  - State Lands
  - Bureau of Land Management
  - Other Federal
  - County
  - City
  - Private Lands
  - Water

- 1 - protrudes out from the original GA bdry due to land acquisition
- 2 - FS admin bdry now excludes a parcel of PVT land on boundary
- 3 - FS admin bdry now excludes a parcel of PVT land on boundary
- 4 - FS bdry extended to include land "owned by BLM, Reserved for use by USFS"



# Geographic Area Changes

