

**Order Number: # 01-04-07-24-001**



**U.S. Department of Agriculture, U.S. Forest Service  
Idaho Panhandle National Forest  
Bonners Ferry Ranger District**

**Kootenai River Complex Road Closure FSR 432**

**PROHIBITIONS**

Pursuant to 16 U.S.C. § 551 and 36 C.F.R. § 261.50(b), the following are prohibited on National Forest System (NFS) Road 432 in the Bonners Ferry Ranger District, Idaho Panhandle National Forests, as described below and shown on the attached map incorporated into this Order as Exhibit A (the "Described Road"):

1. Being on the Road. 36 CFR § 261.54(e).

**EXEMPTIONS**

Pursuant to 36 C.F.R. § 261.50(e), the following persons are exempt from this Order:

1. Persons with Forest Service Permit No. FS-7700-48 (Permit for Use of Roads, Trails, or Areas Restricted by Regulation or Order), specifically exempting them from this Order or a written determination by a Forest Service authorized officer that a permit is not required under 36 C.F.R. § 251.50(e)(1) or (2).
2. Any Federal, State, or Local Officer, or member of an organized rescue or firefighting resource in the performance of an official duty.

**DESCRIBED ROAD**

The entirety of the Ball Creek Road (FSR 432) extending just West of the NFS boundary.

**PURPOSE**

The purpose of this Closure Order is for public safety due to past wildfire effects on the Kootenai River Complex on the Bonners Ferry Ranger District. The closure prohibits all

methods of travel (foot, mechanized, motorized, and stock) on the closed road (see map).

## **IMPLEMENTATION**

1. This Order shall be in effect from January 29, 2024, at midnight (0000 hours) through July 15, 2024 at midnight, unless rescinded.
2. A map identifying the Described Roads is attached and made part of this Order as Exhibit A. For a digital version of this Order and Exhibit A, go to <https://www.fs.usda.gov/alerts/ipnf/alerts-notice>.
3. Unless otherwise expressly defined in this Order, the terms used in this Order are defined by the regulations of the Secretary of Agriculture, 36 C.F.R. Chapter II, Parts 200-299. If there are terms in this Order that are not expressly defined in the Order or 36 C.F.R. Chapter II, Parts 200-299, their meaning shall be determined by their plain language definitions.
4. A violation of the above prohibitions is punishable as a Class B misdemeanor by a fine of not more than \$5,000 for individuals and \$10,000 for organizations, or by imprisonment for not more than six months, or both. 16 U.S.C. § 551; 18 U.S.C. §§ 3559, 3571, and 3581.
5. Contact the Bonners Ferry Ranger District in Bonners Ferry Idaho, (208) 267-5561, and the Idaho Panhandle National Forests Supervisor's Office in Coeur d'Alene, (208) 765-7723, for more information about this Order.
6. This Order supersedes any previous Orders prohibiting the same or similar acts on the same Described Road.

Signed and issued on January 29, 2024.

---

Forest Supervisor  
Idaho Panhandle National Forests



# Idaho Panhandle National Forests



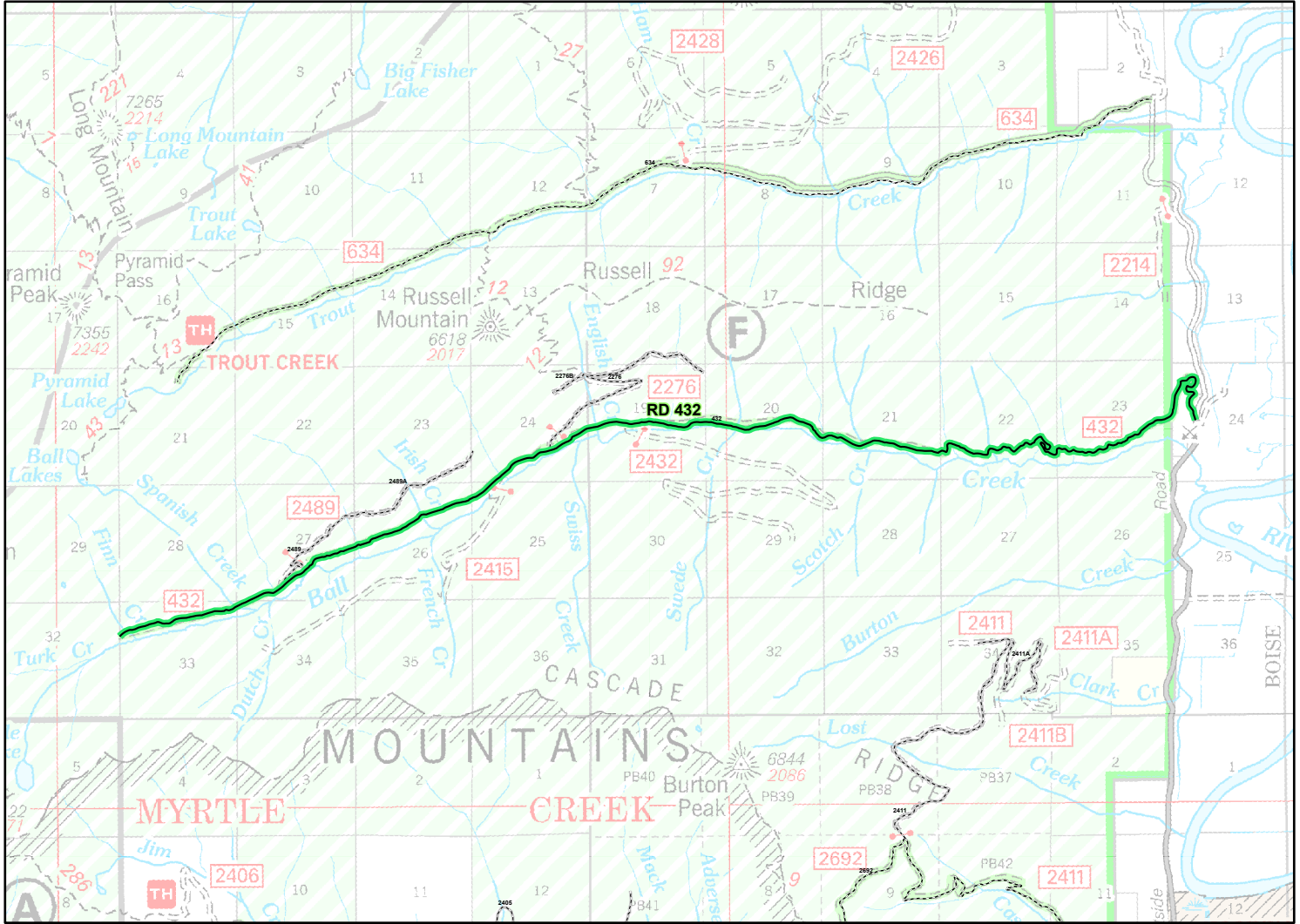
## Forest Closure: Kootenai River Complex

Order Number: 01-04-07-24-001

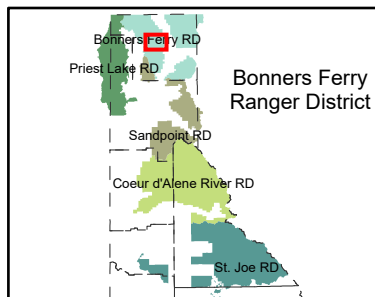
Effective Date : January 27, 2024

Rescind Date : July 15, 2024

### Exhibit A



### Boundary County, Idaho



### Closed Route Numbers

FSR 432

### Closures



### Open Routes

