



NEED A FEW GOOD REASONS TO LEASH YOUR DOG?

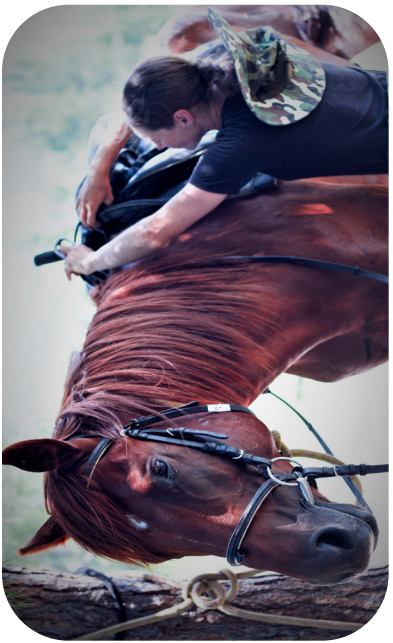
- Leashes protect dogs from becoming lost and from wildland hazards, such as porcupines, mountain lions, snakes, and sick, injured, or rabid animals.
- Unleashed dogs harass, injure, and sometimes kill wildlife.
- Unleashed dogs intimidate other hikers and their dogs, depriving them of the peace wildlands provide.
- Failure to leash your dog could result in a fine.



TARGET SHOOTING AND HUNTING

Discharging any weapon within 150 yards of a recreation site or occupied area is prohibited.

36 CFR 261.10(d)



CAMPGROUND AND DAY-USE AREAS

- The campground is for equestrian campers. *Camping without a horse is discouraged.*
- Loop A sites are first-come, first-served. Sites in Loops B and C are reservable through www.recreation.gov or by calling 877-444-6777.
- Camping is permitted only in designated campsites.
- Each site has a tether line and a corral large enough to accommodate two horses.
- A total of four horses per site is allowed.
- Campground can accommodate trailers up to 40 feet in length. Trailers longer than this are discouraged due to tight turns.
- Please respect common water spigots and share with other campers.
- Ride horses at a walk through the campground.
- Please remove all straw, feed, and manure. Manure may be deposited in campground dumpsters or hauled away.
- Where horses have been tethered, please restore the area to its natural-looking appearance.
- Keep horses on the roadway or designated trails. Cross-country travel destroys vegetation and leads to erosion.
- Pets must be on a leash no longer than 6 feet at all times.
- No RV dump facilities are in the campground.
- Do not wash dishes, bathe, or brush your teeth at public faucets.
- Do not release grey or wastewater onto the ground.
- Quiet hours are 10 p.m. – 6 a.m.

WELCOME TO GROOM CREEK HORSE CAMP

Groom Creek Horse Camp was developed in the 1980s. Volunteer donations and labor, plus Forest Service grant money, have contributed to annual cleanups and improvements, including corrals, tie-lines, and a group use ramada/grill shelter.

To get to Groom Creek Horse Camp from downtown Prescott, take Gurley Street east to Mt. Vernon Avenue (which turns into Senator Highway). Go about 6.5 miles south to the community of Groom Creek; continue another .7 miles and turn right at the camp.

USE FEES

The camping and day-use fees charged in the Groom Creek Horse Camp are authorized under the Federal Lands Recreation Enhancement Act. Fees are used to maintain and improve facilities and services in the area.



GET IN TOUCH

PRESCOTT NATIONAL FOREST

Bradshaw and Chino Valley Ranger Districts
344 S. Cortez St.
Prescott, AZ 86303
Phone: 928-443-8000

OR VISIT

www.fs.usda.gov/prescott

YOUR RECREATION FEES PRODUCED THIS BROCHURE. THANK YOU VERY MUCH FOR YOUR SUPPORT!



Forest Service
U.S. DEPARTMENT OF AGRICULTURE



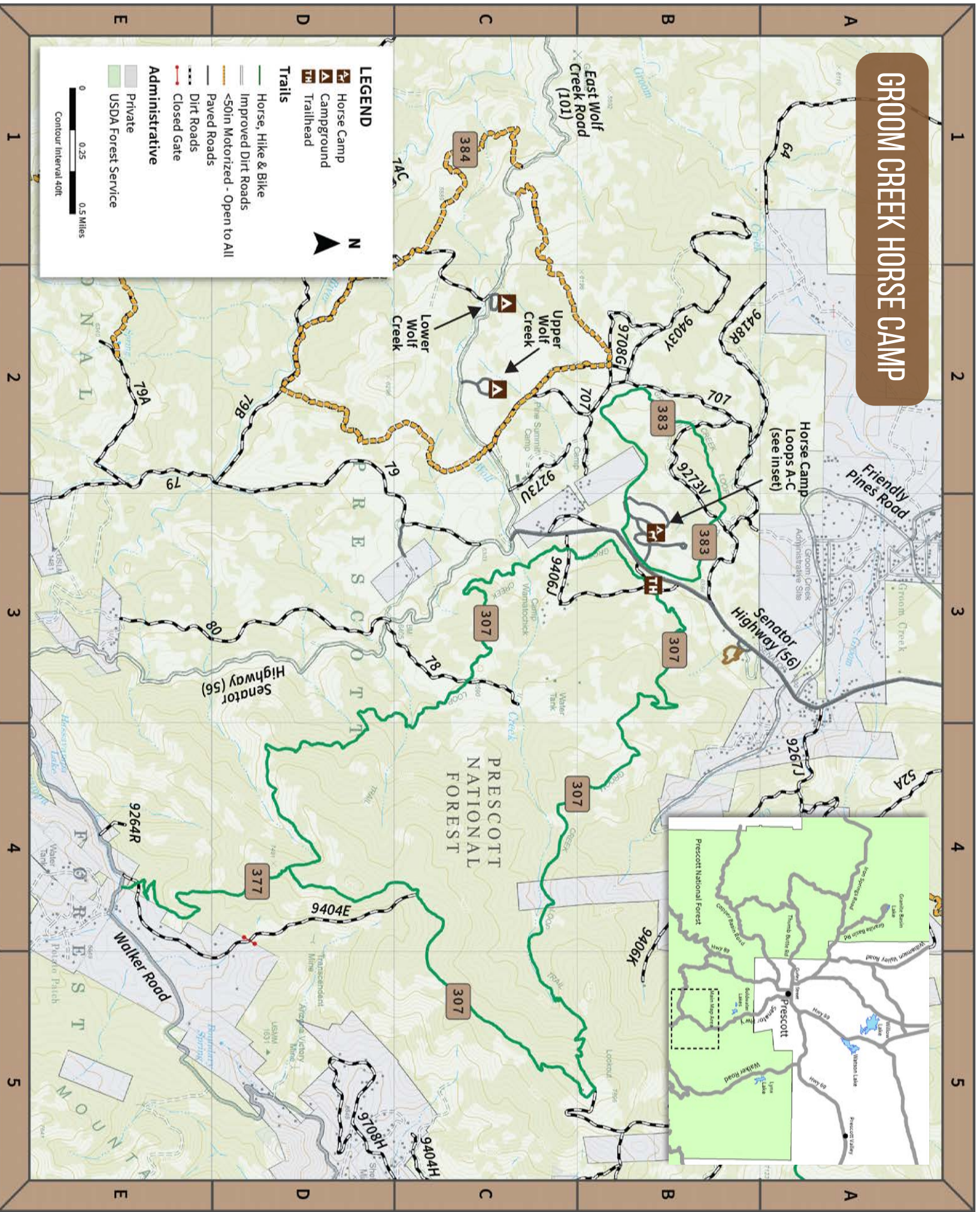
GROOM CREEK HORSE CAMP

Groom Creek HORSE CAMP
PRESCOTT
National Forest

BRADSHAW RANGER DISTRICT

PRESCOTT
National Forest

GROOM CREEK HORSE CAMP



NUMBER AND NAME	LENGTH (miles)	MAP GRID	TRAIL RATING	ACTIVITIES	COMMENTS
307 - Groom Creek Loop	8.7	B3	Difficult		Uphill climbs to beautiful views.
377 - Isabella Trail	1.5	D4	Difficult		Steep trail that goes to Walker Road from Trail 307.
383 - Horse Camp Loop	2.5	B3	Moderate		Trail makes a broad loop around Horse Camp.
384 - Wolf Creek Loop	6.0	B2	Moderate		Popular for horseback riding. Please use caution as this trail is designated for motorized use.

CAMPING OPTIONS

NAME	MAP GRID	CAMP SITES	TOILETS	DRINKING WATER	OPEN SEASON	STAY LIMIT (Within 30 Days)	RESERVATION	FEE
Loop A	B3	6		Yes	May 1 - Oct. 31	7	No	\$18
Loop B	B3	8		Yes	May 1 - Oct. 31	7	Yes	\$18
Loop C	B3	21		Yes	May 1 - Oct. 31	7	Yes	\$18

