



**U.S. Department of Agriculture, U.S. Forest Service
White River National Forest
Sopris Ranger District**

Occupancy and Use Prohibitions

PROHIBITIONS

Pursuant to 16 U.S.C. § 551 and 36 C.F.R. § 261.50 (a) and (b), the following are prohibited on the National Forest System (NFS) lands and trails in the Sopris Ranger District, White River National Forest, described below and shown on the attached map incorporated into this Order as Exhibit A (the “Described Areas” and “Described Trails”):

1. Building, maintaining, attending or using a fire, campfire, or stove fire except in campgrounds and dispersed camp sites designated and provided by the Forest Service, in the Frying Pan River and Crystal River Corridors. 36 C.F.R. § 261.52(a)
2. Camping, except in campgrounds and dispersed campsites designated and provided by the Forest Service, in the Frying Pan River and Crystal River Corridors. 36 C.F.R. § 261.58(e)
3. Possessing a dog on the Described Trails and in the Avalanche Trail Area, except if it is on a leash six feet or less in length. 36 C.F.R. § 261.58(s)

EXEMPTIONS

Pursuant to 36 C.F.R. § 261.50(e), the following persons are exempt from this Order:

1. Any Federal, State, or Local Officer, or member of an organized rescue or firefighting force in the performance of an official duty.

DESCRIBED AREAS AND TRAILS

The Described Areas include the following:

- Frying Pan River Corridor – All NFS lands within ¼ mile of County Road 4 along Ruedi Reservoir.
- Crystal River Corridor – All NFS lands within ¼ mile of Highway 133 beginning at the Forest boundary and the junction of County Road 3 and ending at the town of Marble, Colorado.
- Avalanche Trail Area – All NFS lands within ¼ mile of NFS Trail (NFST) 1959,

Order Number: # UFC-WRNF-2024-08

Avalanche Trail.

The Described Trails are NFST 1958, Thomas Lakes Trail, from its junction with NFSR 311 to Thomas Lakes, and the entirety of NFST 1959, Avalanche Trail.

PURPOSE

The purpose of this Order is to protect natural resources and public safety.

IMPLEMENTATION

1. This Order shall be in effect from January 1, 2024 at 12:01 a.m. through December 31, 2024 at 11:59 p.m., unless rescinded.
2. A map identifying the Described Areas and Trails are attached and made part of this Order as Exhibit A. For a digital version of this Order and Exhibit A, go to <https://www.fs.usda.gov/alerts/wrnf/alerts-notices>.
3. Unless otherwise expressly defined in this Order, the terms used in this Order are defined by the regulations of the Secretary of Agriculture, 36 C.F.R. Chapter II, Parts 200-299. If there are terms in this Order that are not expressly defined in the Order or 36 C.F.R. Chapter II, Parts 200-299, their meaning shall be determined by their plain language definitions.
4. A violation of the above prohibitions is punishable as a Class B misdemeanor by a fine of not more than \$5,000 for individuals and \$10,000 for organizations, or by imprisonment for not more than six months, or both. 16 U.S.C. § 551; 18 U.S.C. §§ 3559, 3571, and 3581.
5. Contact the White River National Forest Supervisor's Office, at (970) 945-2521, for more information about this Order.
6. This Order supersedes any previous Orders prohibiting the same or similar acts in the same Described Areas or on the same Described Trails.

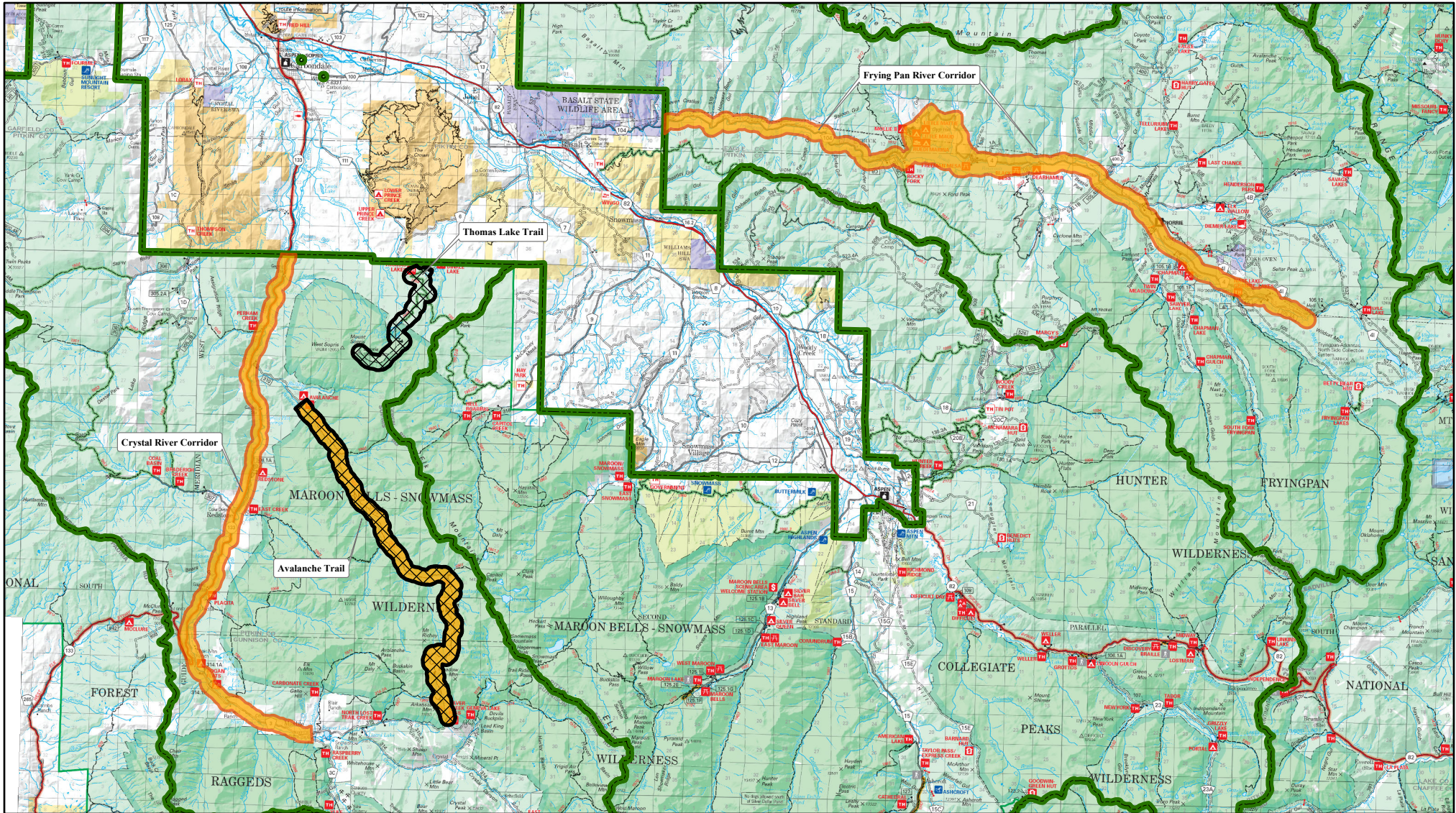
Signed and issued on December 15th, 2023.

Scott Fitzwilliams
Forest Supervisor
White River National Forest



Exhibit A | Order # UFC-WRNF-2024-08

White River National Forest | Sopris Ranger District



Legend

- Ranger District Boundary
- Described Areas
- Possessing a dog in the Described Areas
- Wilderness
- USDA Forest Service
- Non-Federal Land



Vicinity Map

