

- Up to 12 Cords of free personal use firewood per household per year may be removed under this free use authorization.
- User shall complete the Product Quantity Removal record in ink prior to transporting products off Forest Service roads.
- The entire original authorization including the Firewood Removal Guide Map must always be in possession of the user while cutting and hauling firewood. NO copies are valid.
- Only dead wood may be cut. DO NOT cut trees signed, tagged, flagged, marked or blazed in any way, or any tree, standing or down, that has green leaves or needles. Do not cut standing or down trees that are 20 inches or greater in diameter in areas designated on the Firewood Removal Guide Map, unless pre-approved in writing by the District Ranger.
- CAUTION: Western Larch and various hardwood species shed their needles and leaves in the fall but are still alive.
- Log decks are closed to firewood cutting unless signed as open. Firewood gathering is not allowed in areas signed as being closed or shown as closed on the Firewood Removal Guide Map.
- Firewood may only be taken in lengths up to 8 feet unless pre-approved in writing by the District Ranger.
- Firewood cutting is allowed only within 200 feet of Forest Service roads shown as open on the Firewood Removal Guide Map and unopened county roads. No cutting is allowed along paved Forest Service, State or County roads. Snow plowing of roads is prohibited.
- Firewood cutting/removal is not allowed within 300 feet of a fish bearing stream as shown on the Firewood Removal Guide Map. It is not permitted within 150 feet of other flowing streams, pond, lakes, reservoirs, and wetlands.
- Motorized vehicles are not allowed off existing roads that are open to the public, unless otherwise specified within the authorization. Parking shall not block traffic or impede fire or emergency vehicles.
- Users shall remove all trash and litter resulting from firewood cutting activities.
- Concurrent with forest product removal activities, slash and unused vegetation material resulting from the user's activities shall be removed from roads and ditches and scattered in the surrounding landscape.
- The User named on this authorization is responsible for all damage to natural features, riparian areas, other vegetation, and roads, trails, fences, ditches, telephone lines or other improvements resulting from activities under this authorization.
- Regardless of whether forest products are removed, this authorization will terminate either at midlength of the termination date shown, or when the quantity listed above is reached whichever comes first.
- Users shall comply with fire requirements and current restrictions to prevent forest fire.
- Users must follow the restrictions under the Industrial fire precaution levels.
- Check with local Ranger District office.
- April 1 – October 15 the following equipment is required to be in the possession of the operator while using a power saw: exhaust systems in good repair and a spark arrestor of 0.023" or less, a standard handled shovel with a minimum 8" blade and a pressurized chemical fire extinguisher of not less than 8 oz. capacity by weight.

Please read them carefully

For More Information Contact:

**Colville National Forest
Tonasket Ranger District
1 West Winesap
Tonasket, WA 98855
(509) 486-2186**

www.fs.usda.gov/colville



Take a map. The Okanogan National Forest Travel Plan Map and this Firewood Map are free. Restrictions on both apply. This product may contain geographic feature names that could be declared derogatory through U.S. Department of the Interior Secretarial Orders 3404 & 3405. Upon the next printing of this publication, the USDA Forest Service will use official replacement names. For a list of declared derogatory names and official replacement names, visit: www.usgs.gov/us-board-on-geographic-names The U.S. Department of Agriculture (USDA) prohibits discrimination in all its programs and activities on the basis of race, color, national origin, age, disability, and where applicable, sex, marital status, familial or parental status, religion, sexual orientation, genetic information, political beliefs, reprisal or because all or part of an individual's income is derived from any public assistance program. Persons with disabilities who require alternative means for communication of program information should contact USDA TARGET Center at (202) 720-2600. To file a complaint, contact: USDA, Director, Office of Civil Rights, 1400 Independence Ave., Washington DC 20250, or call (800)795-3272.



Firewood Removal Guide/Map

Tonasket Ranger District

Thank you for your cooperation in adhering to the firewood removal guide for the National Forest lands in Okanogan County. The purpose of this guide is to provide firewood removal requirements.



We recognize the importance of the firewood program to the public. Our goal is to continue the program while providing proper protection to the many wildlife and fisheries living in the Forest.

It is your responsibility to comply with the conditions listed in this guide. Failure to comply with these restrictions and regulations is in violation of Title 36 CFR 261.6

Please help us manage wisely, and enjoy gathering firewood in your National Forest.

Colville National Forest Tonasket Ranger District

Effective date: April 2023

Firewood Removal Record

Free Firewood Quantity Removal Record (Limit 12 Cord)						
Location	Date	1/4 cord	1/4 cord	1/4 cord	1/4 cord	
<i>Example: FS Road 1500100</i>	6/1/23	X	X	X	X	

Before leaving each site, complete the Product Quantity Removal record, included in the Firewood Authorization packet, in ink, prior to transporting products off Forest Service roads. The Firewood Quantity Removal Record is valid on the Colville National Forest. Contact the local ranger district to obtain firewood removal maps for other areas of the Colville National Forest.

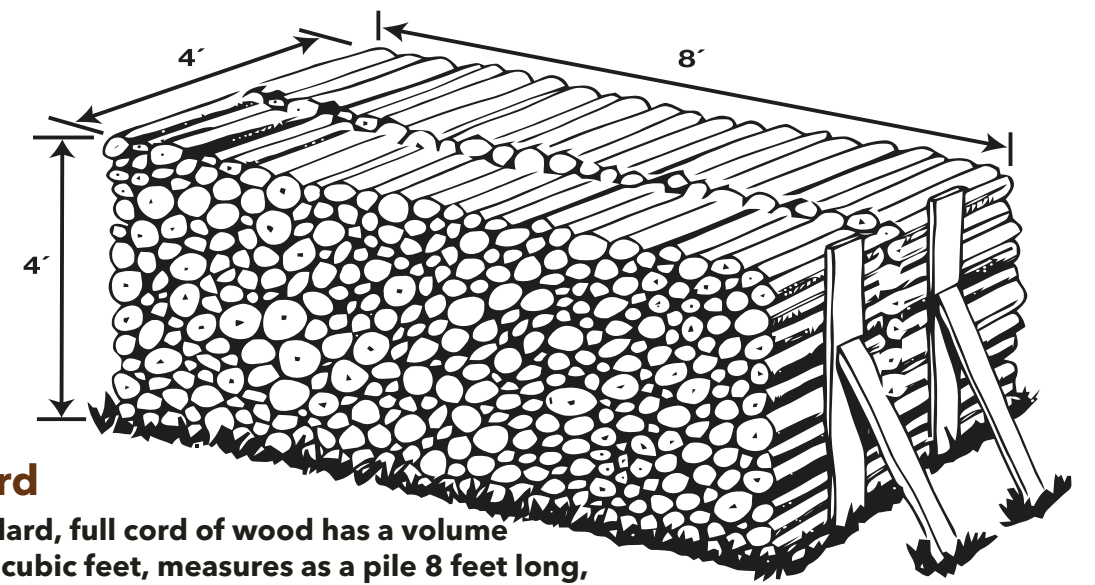
AREAS CLOSED to firewood removal are:

- ★ Beyond 200 feet of an unblocked Forest Service road.
- ★ Areas closed by seasonal or special closure.
- ★ Within 300 feet of fish bearing streams as shown on this map.
- ★ Within 150 feet of other streams, ponds, lakes, reservoirs or wetlands not shown on this map.
- ★ Late Successional Reserves as shown on this map.
- ★ Trees signed or marked with any color paint.
- ★ Campgrounds, Trailheads, Picnic Areas, Wilderness Areas, Research Natural Areas, Botanical Areas or other Forest Service Administrative Areas.
- ★ Within 200 ft. of State Highway 20 on National Forest Land.
- ★ Timber Sale Areas or areas signed as "No Firewood Cutting Allowed." Contact Tonasket Ranger District for the status of timber sales.

NOTE: Where roads are within 150-300 feet of streams, ponds, lakes, reservoirs, or wetlands, the area is closed to firewood removal.

Campers on the National Forest may use up to 1/4 cord of firewood per day, without a firewood authorization. Unused firewood must be left on the National Forest. A firewood authorization is required to take firewood off the National Forest. The same cutting rules apply when cutting camp firewood as when cutting firewood for personal use.

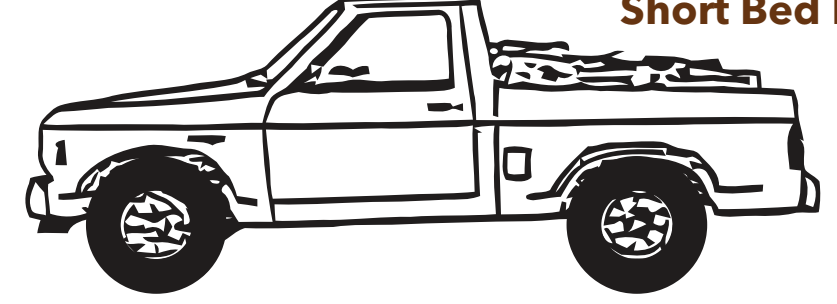
No cutting or gathering of firewood in developed campgrounds.



1 Cord

A standard, full cord of wood has a volume of 128 cubic feet, measures as a pile 8 feet long, 4 feet high, and 4 feet wide. A full cord can weigh up to 5,000 pounds.

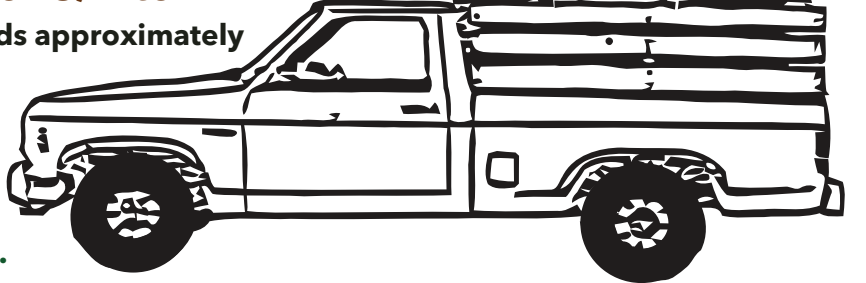
Short Bed Pickup - 1/2 ton



With or without racks this truck bed holds approximately 1/2 (one-half) cord of wood. One load ticket required.

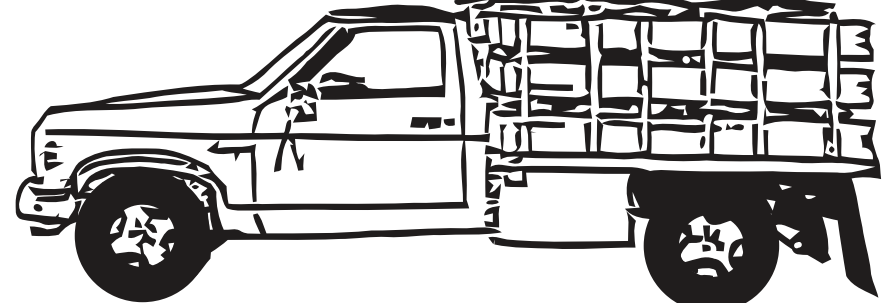
Long Bed Pickup - 1/2 or 3/4 ton

Without racks this truck bed holds approximately 1/2 (one-half) cord of wood. One load ticket required.



With racks this truck bed holds approximately 1 (one) cord of wood. Two load tickets required.

Standard Truck - 1 ton



With high racks this truck bed holds approximately 1 1/2 (one and one-half) cords of wood. Three load tickets required.

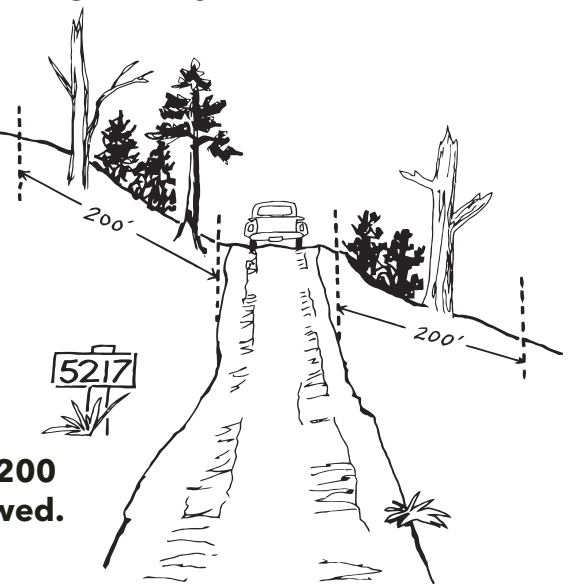
Seasonal Firewood Closure

Firewood gathering on the Tonasket Ranger District is from April 1, 2023 through May 31, 2024 with no cutting of western larch after November 15. The seasonal closures are designed to reduce damage to roads in the late winter and spring, promote the use of seasoned wood which results in cleaner air, and reduce resource impacts in the winter.

Wood cut during the late winter is unseasoned and contains higher moisture. Burning drier wood leads to more efficient heating; less wood and less smoke.

Depending on the conditions, travel on the forest roads in the late winter and early spring can cause rutting and other damage. Debris left behind from woodcutting can block water runoff, leading to washouts. Road maintenance funding is not sufficient to cover the cost of repairing this damage each year.

Other impacts from woodcutting before snowmelt includes damage to fences, high stumping because of the deep snow, and damage to groomed winter trails.

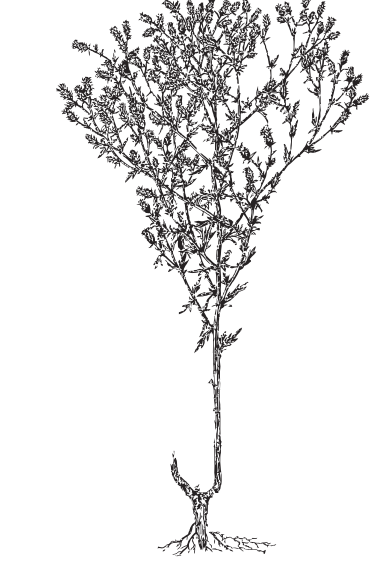


The seasonal closures to firewood gathering may be lifted earlier if conditions warrant.

Gathering wood beyond 200 feet from road is not allowed.

Help Stop the Spread of Noxious Weeds

Weed seeds and plant parts can become lodged in tires, shoes, clothing, pets and firewood. They can fall anywhere and start new infestations.



You can help to stop the spread:

- ★ Remove the seed sources from the area that you're cutting in. Place plants and seeds in plastic bags and dispose of them appropriately.
- ★ Don't drive through or park in weed infested areas.
- ★ Clean seeds from shoes, clothing, pets and wood before going home.
- ★ Remove plants hung-up on your vehicle.
- ★ To report noxious weed infestations on National Forest Lands, contact the nearest Ranger District office.