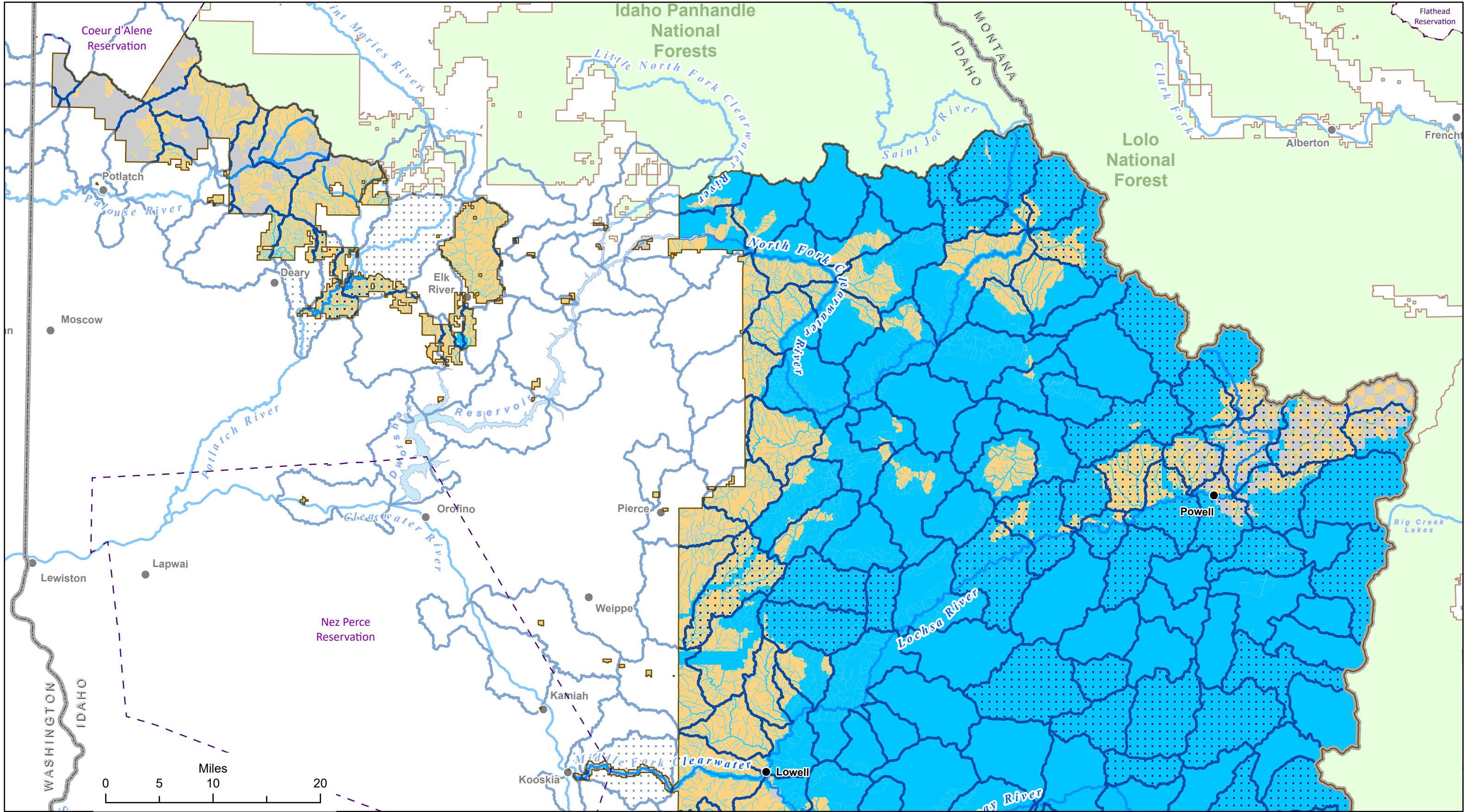
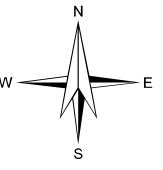




Timber Suitability within Conservation Watersheds

Nez Perce-Clearwater National Forests (NPC)
2023 Land Management Plan
Alternative Y: Northern Portion of the Forests

- Suitable for timber production
- Not suitable for timber production
- Non NPC Forest Lands
- Tribal Reservation Boundary
- NPC Administrative Forest Boundary
- Other National Forests
- Watershed Boundary
- Conservation Watershed

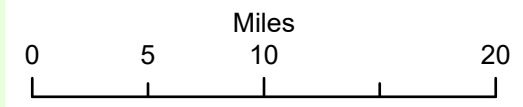
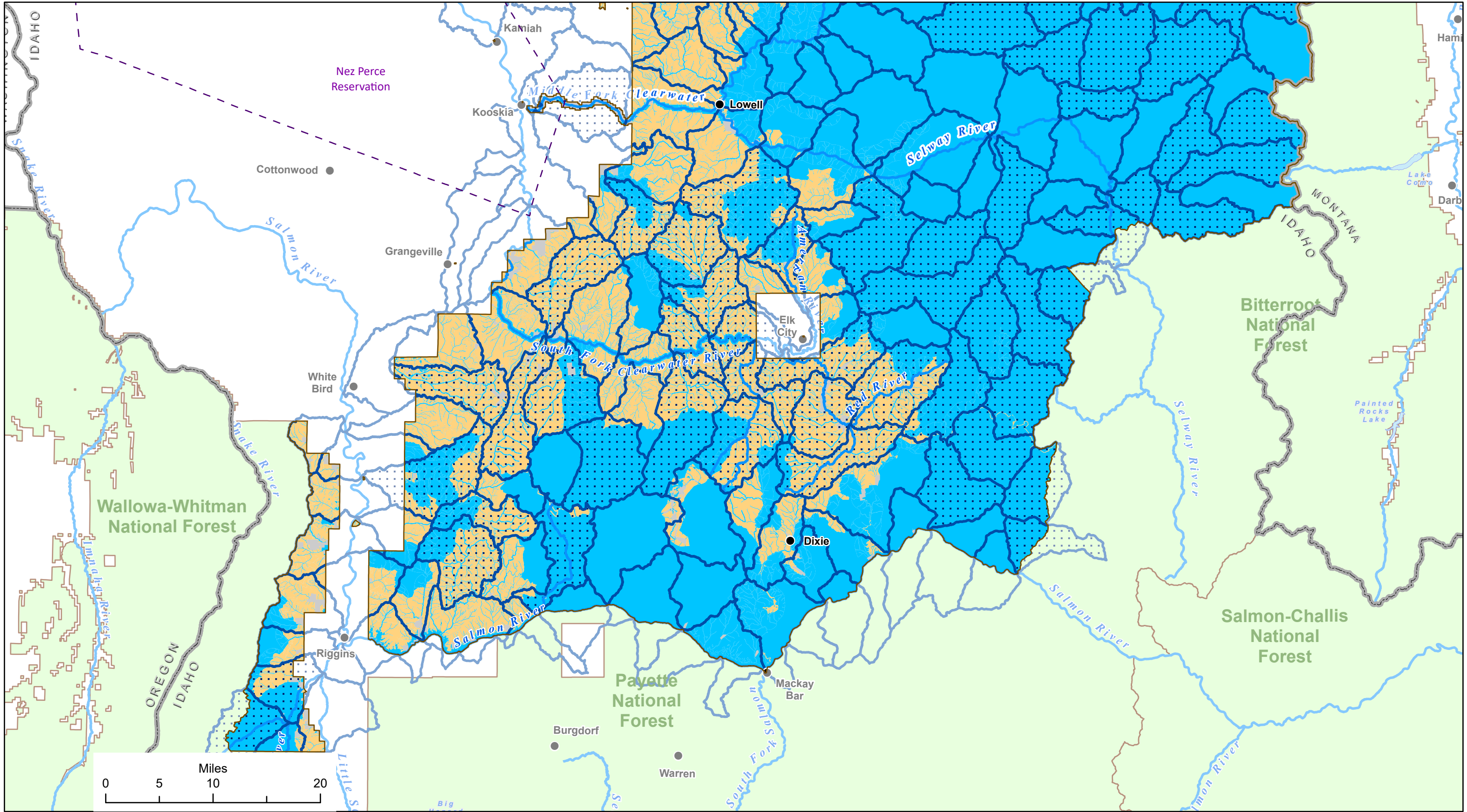
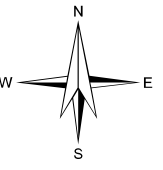




Timber Suitability within Conservation Watersheds

Nez Perce-Clearwater National Forests (NPC)
2023 Land Management Plan
Alternative Y: Southern Portion of the Forests

- Suitable for timber production
- Not suitable for timber production
- Non NPC Forest Lands
- Tribal Reservation Boundary
- NPC Administrative Forest Boundary
- Other National Forests
- Watershed Boundary
- Conservation Watershed

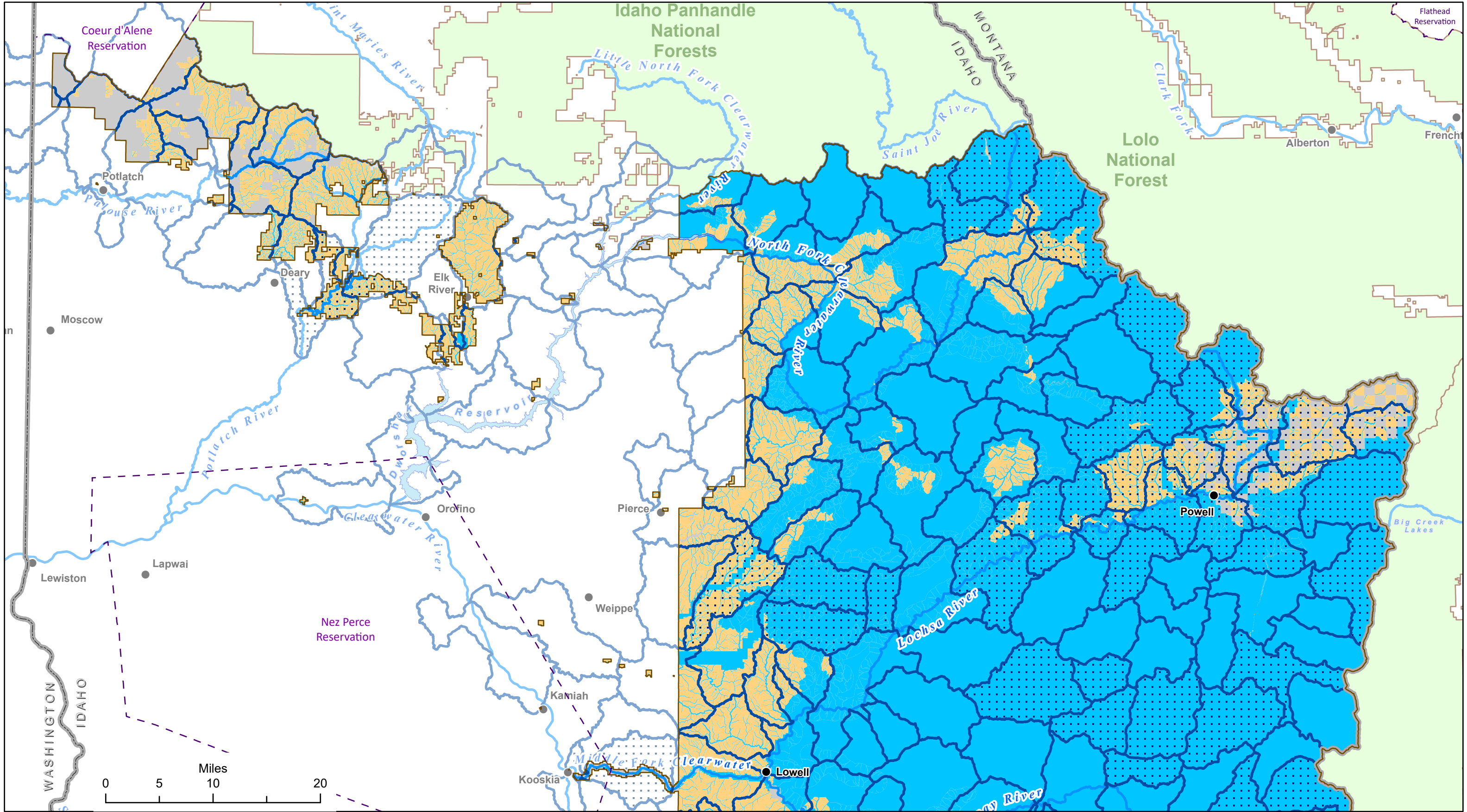
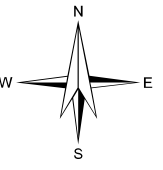




Timber Suitability within Conservation Watersheds

Nez Perce-Clearwater National Forests (NPC)
2023 Land Management Plan
Alternative Z: Northern Portion of the Forests

- Suitable for timber production
- Not suitable for timber production
- Non NPC Forest Lands
- Tribal Reservation Boundary
- NPC Administrative Forest Boundary
- Other National Forests
- Watershed Boundary
- Conservation Watershed

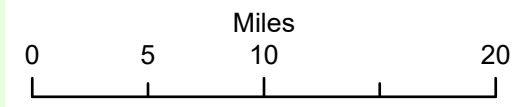
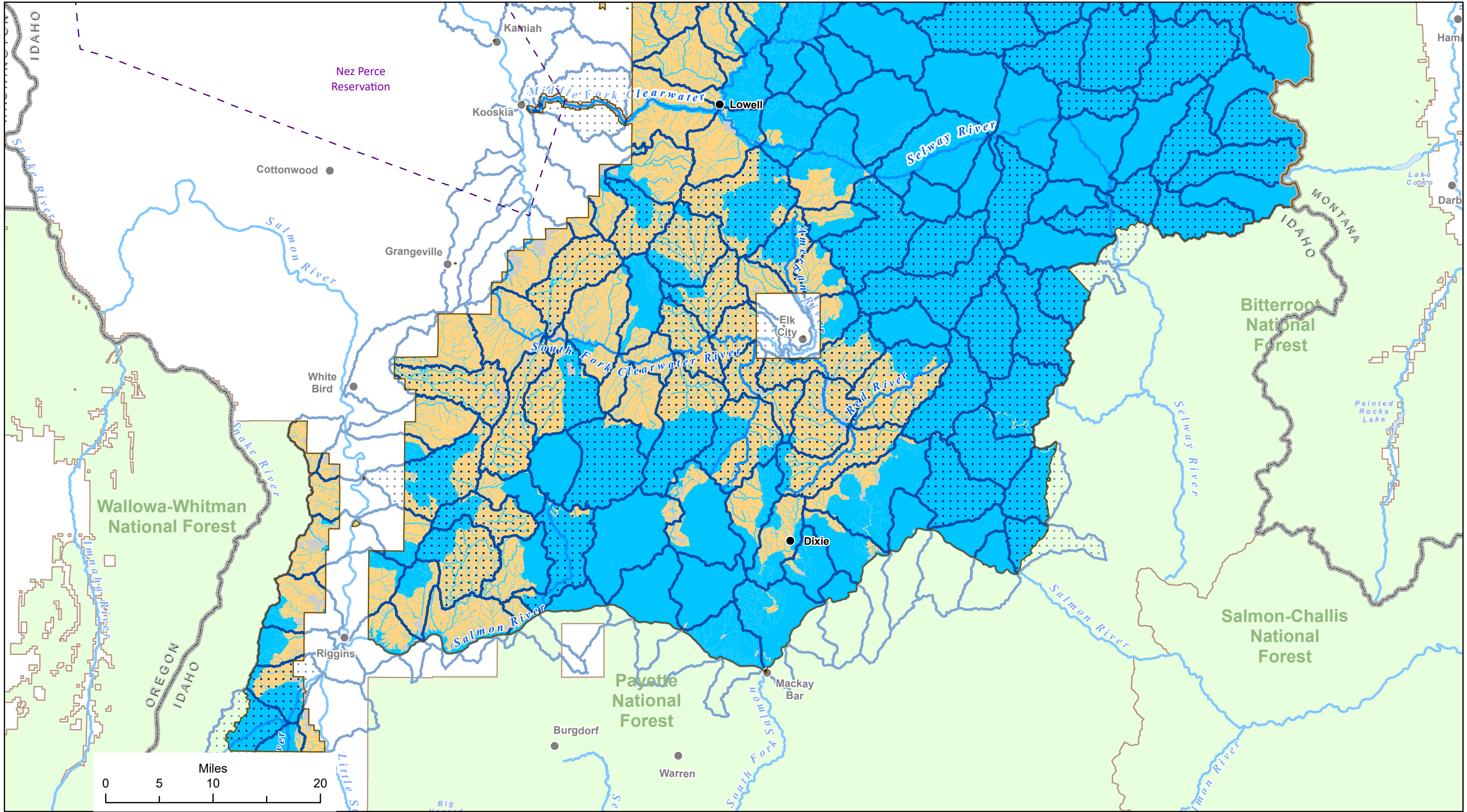
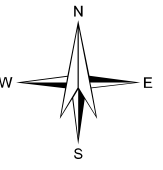




Timber Suitability within Conservation Watersheds

Nez Perce-Clearwater National Forests (NPC)
2023 Land Management Plan
Alternative Z: Southern Portion of the Forests

- Suitable for timber production
- Not suitable for timber production
- Non NPC Forest Lands
- Tribal Reservation Boundary
- NPC Administrative Forest Boundary
- Other National Forests
- Watershed Boundary
- Conservation Watershed





Timber Suitability within Conservation Watersheds

Nez Perce-Clearwater National Forests (NPC)

2023 Land Management Plan

Preferred Alternative: Northern Portion of the Forests

Suitable for timber production

Not suitable for timber production

Non NPC Forest Lands

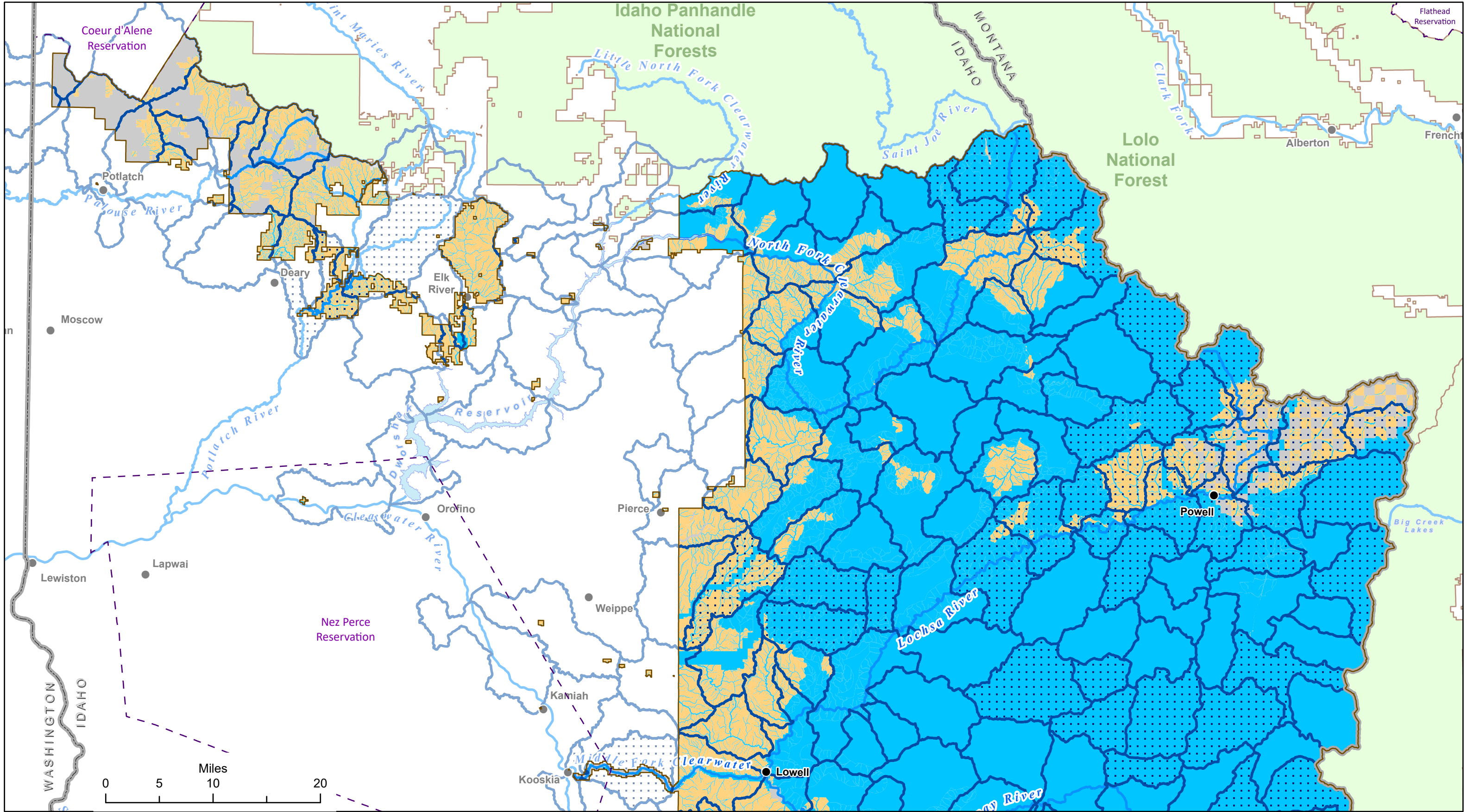
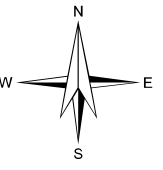
Tribal Reservation Boundary

NPC Administrative Forest Boundary

Other National Forests

Watershed Boundary

Conservation Watershed





Timber Suitability within Conservation Watersheds

Nez Perce-Clearwater National Forests (NPC)

2023 Land Management Plan

Preferred Alternative: Southern Portion of the Forests

Suitable for timber production

Not suitable for timber production

Non NPC Forest Lands

Tribal Reservation Boundary

NPC Administrative Forest Boundary

Other National Forests

Watershed Boundary

Conservation Watershed

