



# Timber Suitability within Conservation Watersheds

Nez Perce-Clearwater National Forests (NPC)

2023 Land Management Plan

No Action Alternative: Northern Portion of the Forests

Suitable for timber production

Not suitable for timber production

Non NPC Forest Lands

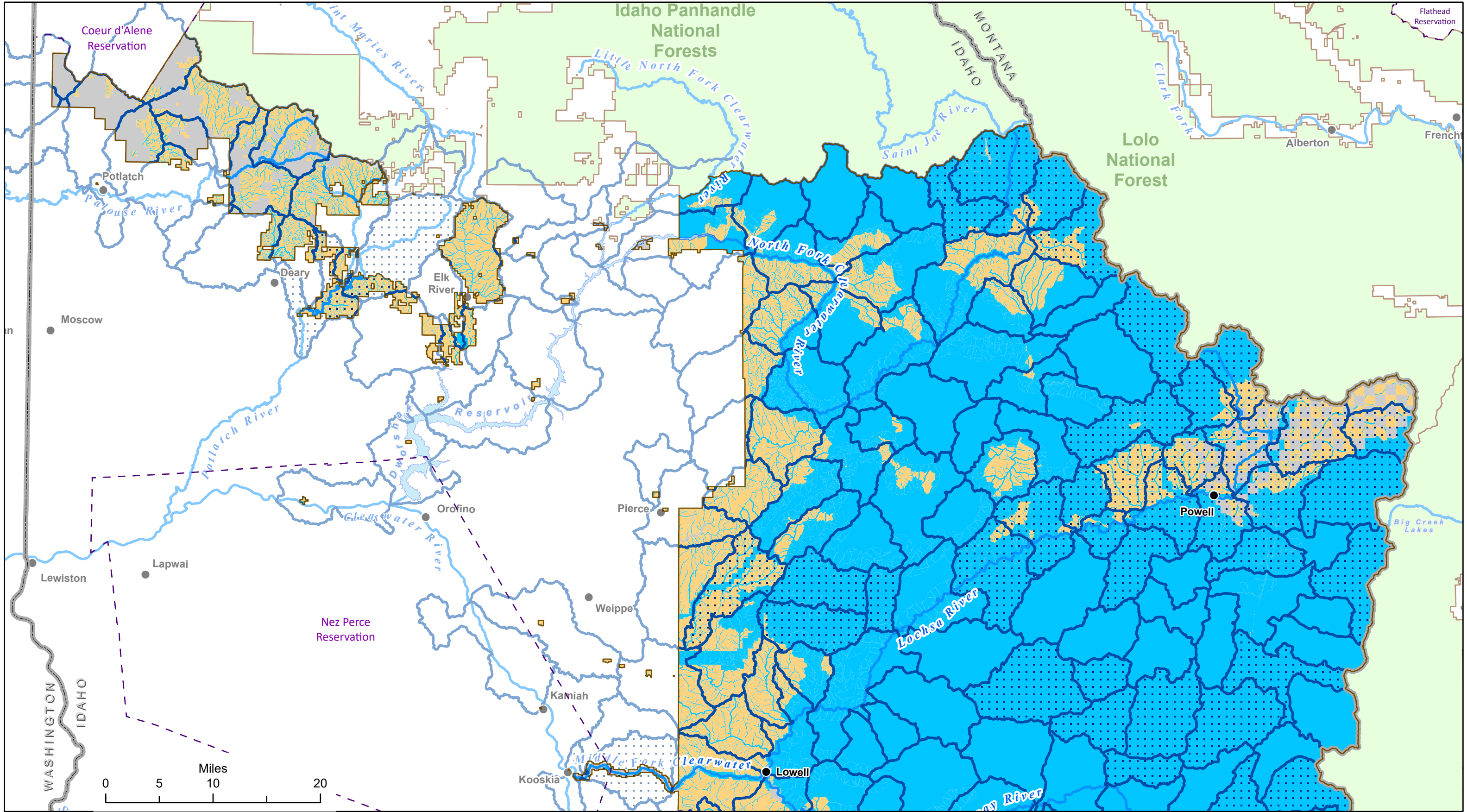
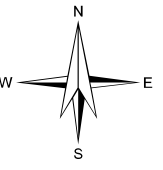
Tribal Reservation Boundary

NPC Administrative Forest Boundary

Other National Forests

Watershed Boundary

Conservation Watershed





# Timber Suitability within Conservation Watersheds

Nez Perce-Clearwater National Forests (NPC)

2023 Land Management Plan

No Action Alternative: Southern Portion of the Forests

Suitable for timber production

Not suitable for timber production

Non NPC Forest Lands

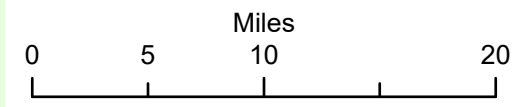
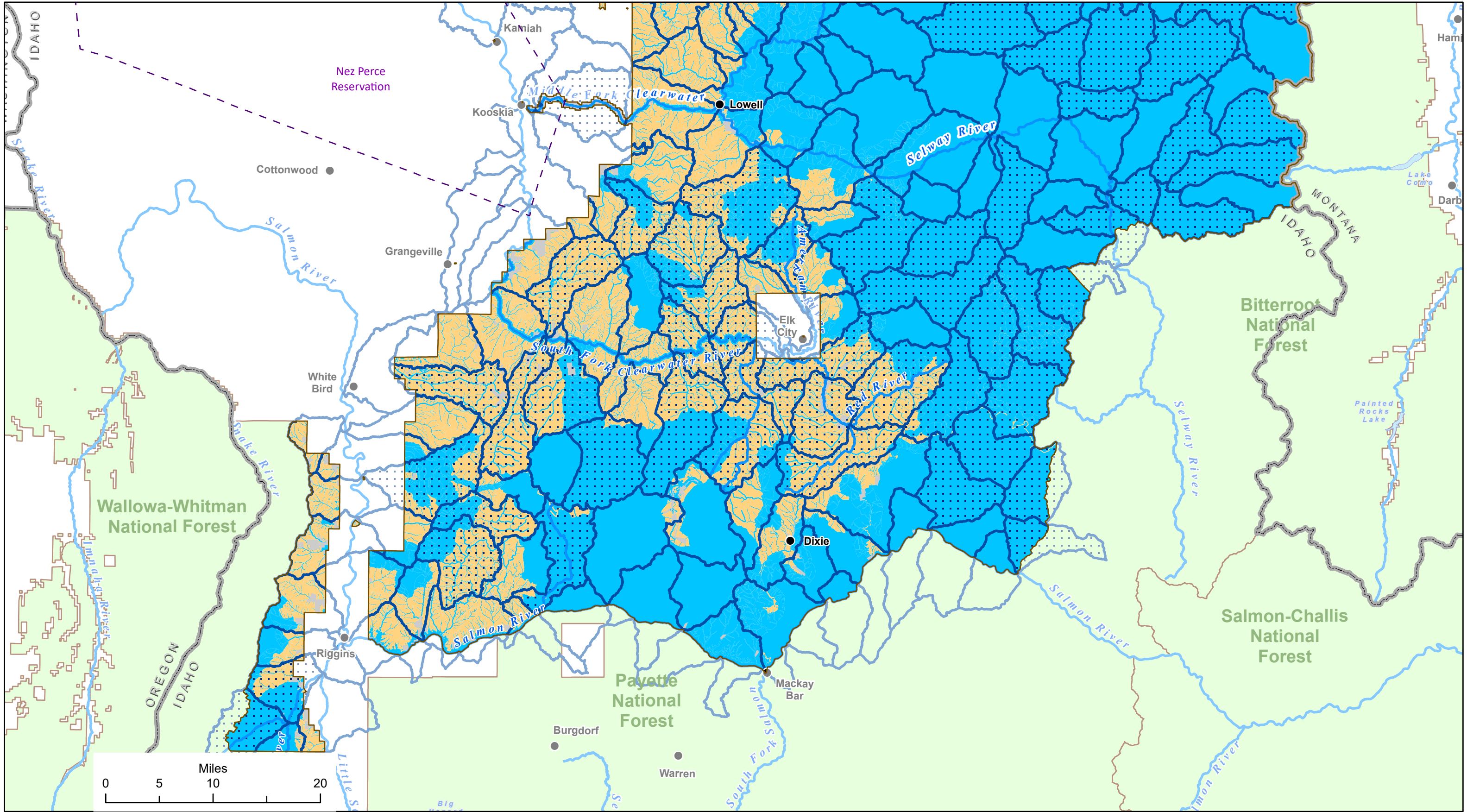
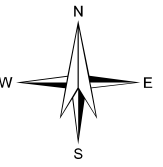
Tribal Reservation Boundary

NPC Administrative Forest Boundary

Other National Forests

Watershed Boundary

Conservation Watershed

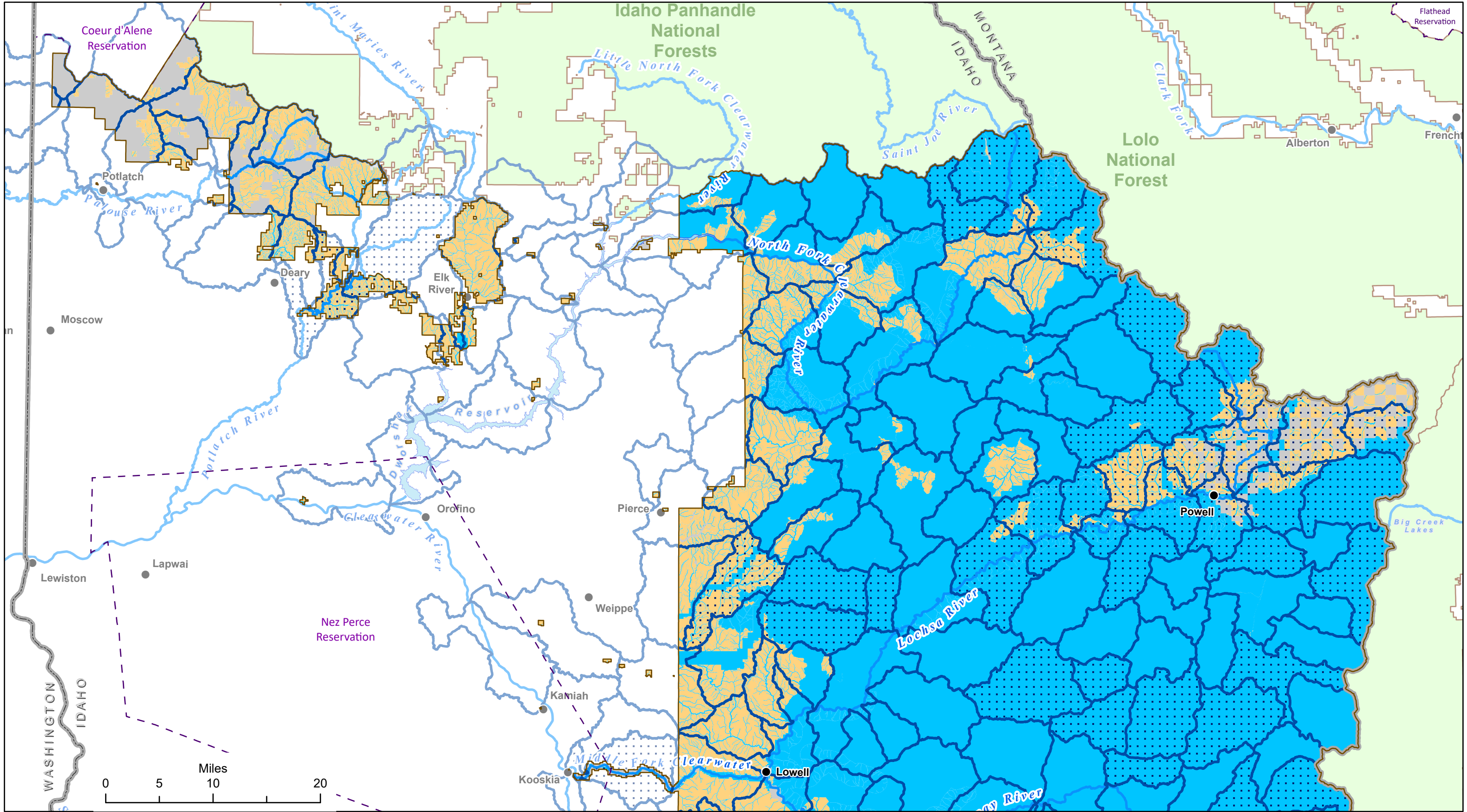
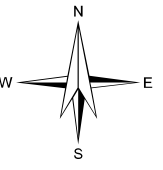




# Timber Suitability within Conservation Watersheds

Nez Perce-Clearwater National Forests (NPC)  
2023 Land Management Plan  
Alternative W: Northern Portion of the Forests

- Suitable for timber production
- Not suitable for timber production
- Non NPC Forest Lands
- Tribal Reservation Boundary
- NPC Administrative Forest Boundary
- Other National Forests
- Watershed Boundary
- Conservation Watershed

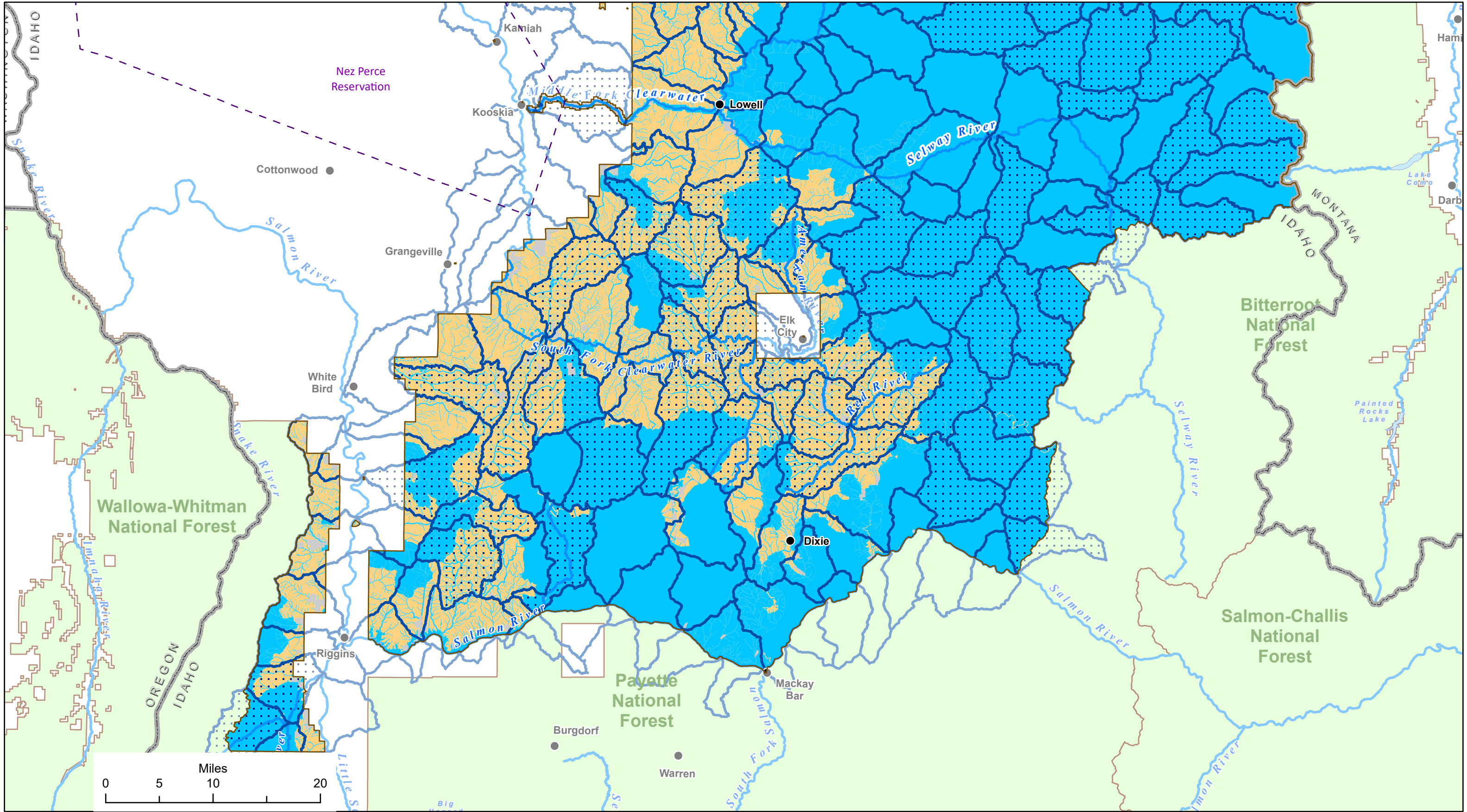
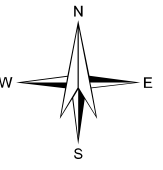




# Timber Suitability within Conservation Watersheds

Nez Perce-Clearwater National Forests (NPC)  
2023 Land Management Plan  
Alternative W: Southern Portion of the Forests

- Suitable for timber production
- Not suitable for timber production
- Non NPC Forest Lands
- Tribal Reservation Boundary
- NPC Administrative Forest Boundary
- Other National Forests
- Watershed Boundary
- Conservation Watershed

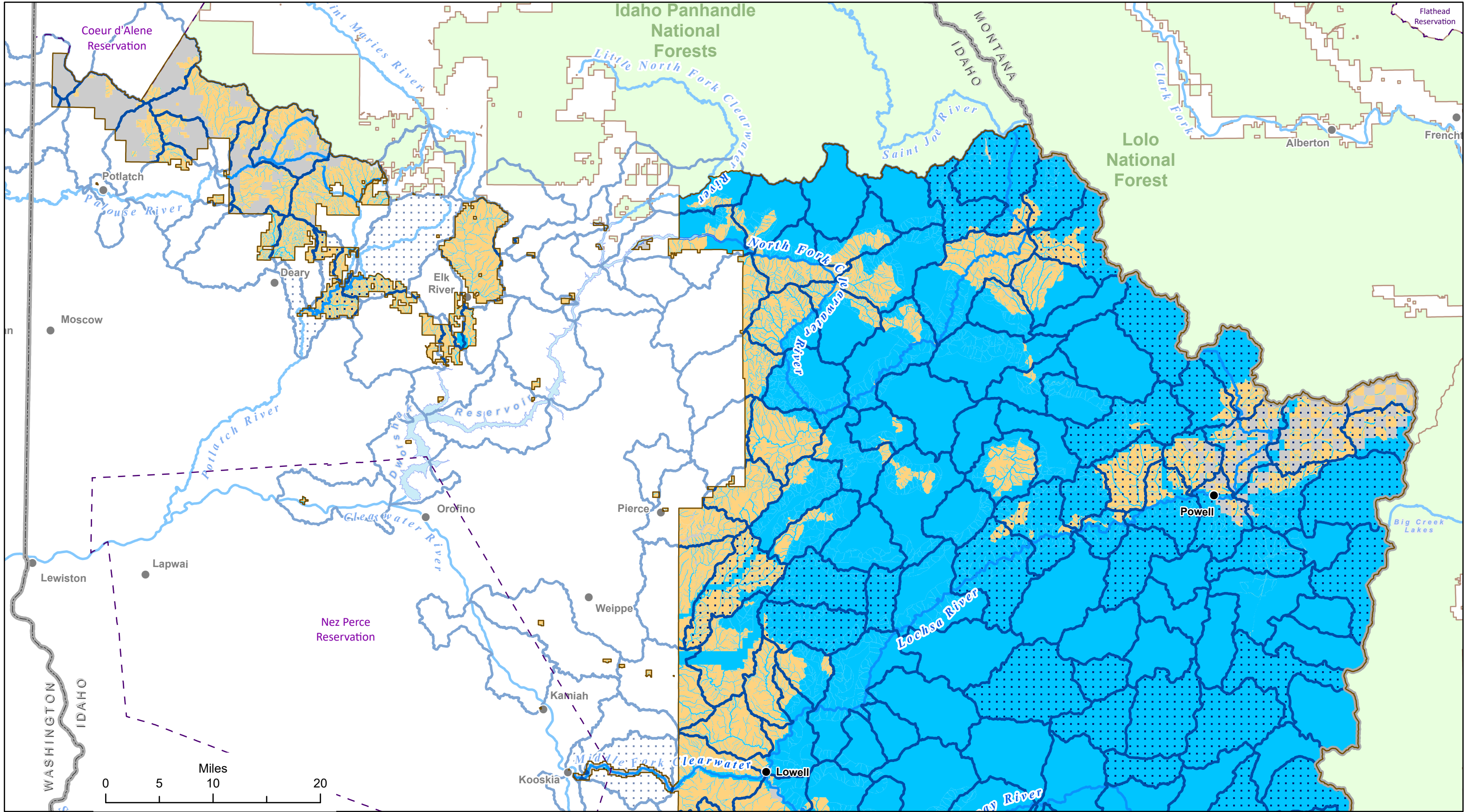
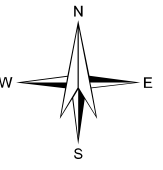




# Timber Suitability within Conservation Watersheds

Nez Perce-Clearwater National Forests (NPC)  
2023 Land Management Plan  
Alternative X: Northern Portion of the Forests

- Suitable for timber production
- Not suitable for timber production
- Non NPC Forest Lands
- Tribal Reservation Boundary
- NPC Administrative Forest Boundary
- Other National Forests
- Watershed Boundary
- Conservation Watershed





# Timber Suitability within Conservation Watersheds

Nez Perce-Clearwater National Forests (NPC)  
2023 Land Management Plan  
Alternative X: Southern Portion of the Forests

- Suitable for timber production
- Not suitable for timber production
- Non NPC Forest Lands
- Tribal Reservation Boundary
- NPC Administrative Forest Boundary
- Other National Forests
- Watershed Boundary
- Conservation Watershed

