






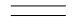

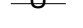




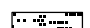



RAIL SALE AREA MAP

CLACKAMAS RIVER RANGER DISTRICT- MT. HOOD NATIONAL FOREST

SHEET 1 of 2

LEGEND

-  Sale Area Boundary, BT1.1.
-  Payment/Cutting Unit, BT1.1, BT5.2
-  Skyline or Tethered Specified Payment/Cutting Unit, BT1.1, BT5.2, BT6.42
-  Gap Center, CT2.35# (Option 1)
-  Heavy Thin Center, CT2.35# (Option 1)
-  Skip Center, CT2.35# (Option 1)
- KO** Keep Road Open, BT6.22
-  Hauling Restricted, CT5.12#
-  Existing Road, CT5.12#
-  Specified Road Reconstruction, AT7, BT5.2
-  Unsuitable for hauling prior to reconstruction, CT5.12#
-  Trail Used for Temporary Road to remain Open, CT5.1#
-  Protect Improvement - Trail, BT6.22
-  Protect Streamcourse, block marks the upper limit, BT6.5, CT5.1# (Option 1), CT6.41#, CT6.42#
-  Protect Improvement - Land Survey Monument and Bearing Trees, BT6.23
-  Invasive Species of Concern, BT6.35
-  Other Ownership

PAYMENT UNIT	Harvest Method Specified BT6.42	INDIVIDUAL TREE DISGNATION CT2.35# (OPTION1) DESIGNATION BY DESCRIPTION	
		DESIGNATED SPECIES*	SPACING (FEET)
2	Ground-based/Skyline or Tethered	DF	16
4	Skyline or Tethered	DF	18
6	Skyline or Tethered	DF	15

*Douglas-fir (DF), western hemlock (WH)

Payment Unit boundaries are designated on the ground with blue "Partial Cut" boundary tags and marked with Orange tracer paint, unless designated by an existing road, BT1.1.

Gap, Heavy Thin and Skip locations mark approximate center.

All landing slash shall be piled, CT6.74#.

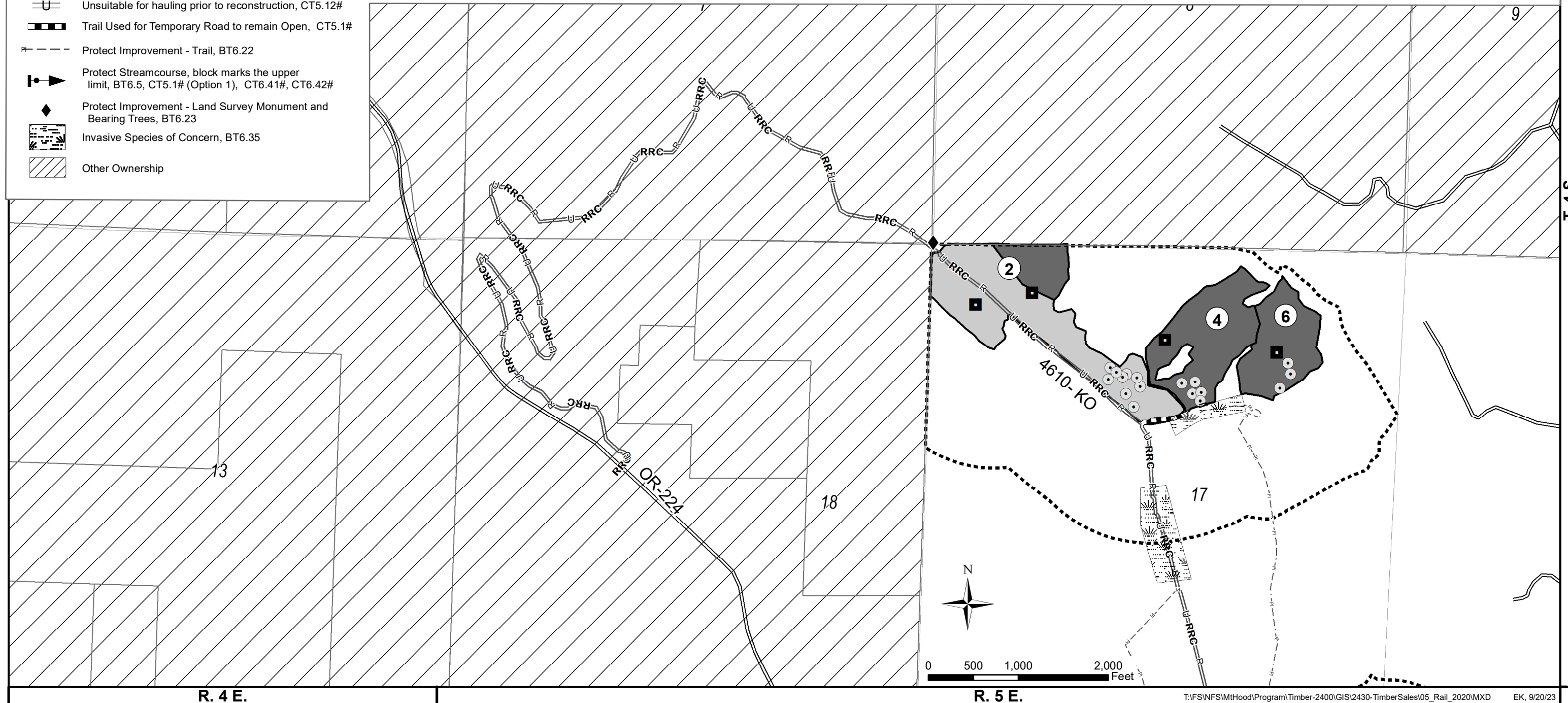
Construction of temporary roads shall be in accordance with criteria shown in CT5.1# (Option 1).

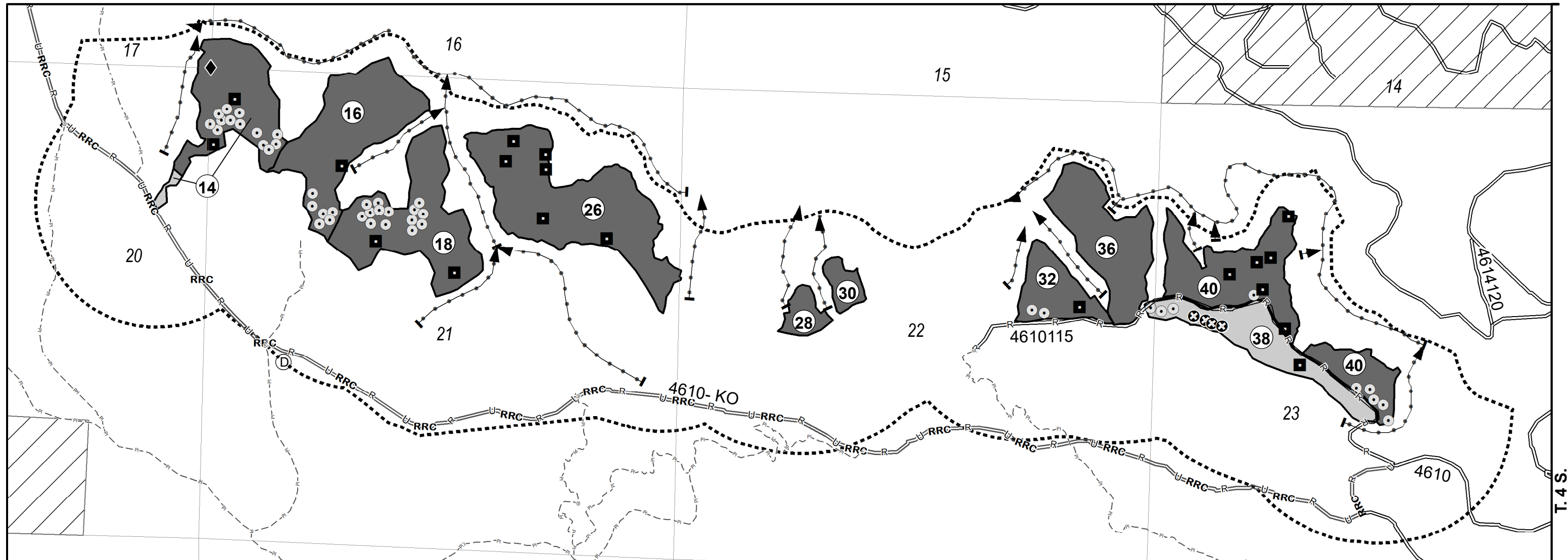
Equipment cleaning – all off-road equipment shall be cleaned and free from all debris that could contain or hold seeds prior to coming onto National Forest lands. All off-road equipment operating in areas identified as invasive species of concern need to be cleaned prior to moving from the Payment Unit or area, BT6.35

All landings and temporary roads shall be scarified unless described otherwise in, CT5.1# (Option 1), CT6.6#.

Directional falling is required in all payment units, CT6.41#.

Land lines are approximate.





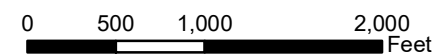
RAIL SALE AREA MAP
CLACKAMAS RIVER RANGER DISTRICT- MT. HOOD NATIONAL FOREST
SHEET 2 of 2

PAYMENT UNIT	HARVEST METHOD SPECIFIED BT6.42	INDIVIDUAL TREE DESIGNATION CT2.35# (OPTION 1) DESIGNATION BY DESCRIPTION	
		DESIGNATED SPECIES*	SPACING (FEET)
14	Ground-based/Skyline or Tethered	DF	14
16	Skyline or Tethered	DF	13
18	Skyline or Tethered	DF, WH	12
26	Skyline or Tethered	DF	12
28	Skyline or Tethered	DF	12
30	Skyline or Tethered	DF, WH	16
32	Skyline or Tethered	DF	16
36	Skyline or Tethered	DF	20
38	Ground-based	DF, WH	13
40	Skyline or Tethered	DF, WH	18

*Douglas-fir (DF), western hemlock (WH)

LEGEND

- Sale Area Boundary, BT1.1.
- Payment/Cutting Unit, BT1.1, BT5.2
- Skyline or Tethered Specified Payment/Cutting Unit, BT1.1, BT5.2, BT6.42
- Gap Center, CT2.35# (Option 1)
- Heavy Thin Center, CT2.35# (Option 1)
- Skip Center, CT2.35# (Option 1)
- KO** Keep Road Open, BT6.22
- Hauling Restricted, CT5.12#
- Existing Road, CT5.12#
- Specified Road Reconstruction, AT7, BT5.2
- Unsuitable for hauling prior to reconstruction, CT5.12#
- Disposal Site, BT5.221
- Protect Improvement - Trail, BT6.22
- Protect Streamcourse, block marks the upper limit, BT6.5, CT5.1# (Option 1), CT6.41#, CT6.42#
- Protect Improvement - Land Survey Monument and Bearing Trees, BT6.23
- Other Ownership



R. 5 E.

Payment Unit boundaries are designated on the ground with blue "Partial Cut" boundary tags and marked with Orange tracer paint, unless designated by an existing road, BT1.1.
 Gap, Heavy Thin and Skip locations mark approximate center.
 All landing slash shall be piled, CT6.74#.
 Construction of temporary roads shall be in accordance with criteria shown in CT5.1# (Option 1).
 Equipment cleaning – all off-road equipment shall be cleaned and free from all debris that could contain or hold seeds prior to coming onto National Forest lands. All off-road equipment operating in areas identified as invasive species of concern need to be cleaned prior to moving from the Payment Unit or area, BT6.35
 All landings and temporary roads shall be scarified unless described otherwise in, CT5.1# (Option 1), CT6.6#.
 Directional falling is required in all payment units, CT6.41#.
 Land lines are approximate.