



United States Department of Agriculture

Forest Service

Uinta-Wasatch-Cache

National Forests

857 West South Jordan Parkway

South Jordan, Utah 84095-8594

Web: <http://www.fs.usda.gov/uwcnf>

Twitter: <https://twitter.com/UWCNF>

Facebook: [https://www.facebook.com/pages/US-Forest-](https://www.facebook.com/pages/US-Forest-Service-Uinta-Wasatch-Cache-National-Forest/1477262249207367)

[Service-Uinta-Wasatch-Cache-National-](https://www.facebook.com/pages/US-Forest-Service-Uinta-Wasatch-Cache-National-Forest/1477262249207367)

[Forest/1477262249207367](https://www.facebook.com/pages/US-Forest-Service-Uinta-Wasatch-Cache-National-Forest/1477262249207367)



News Release

Media Contact: Kathy Jo Pollock

(801) 558-8016

<mailto:kathy.pollock@usda.gov>

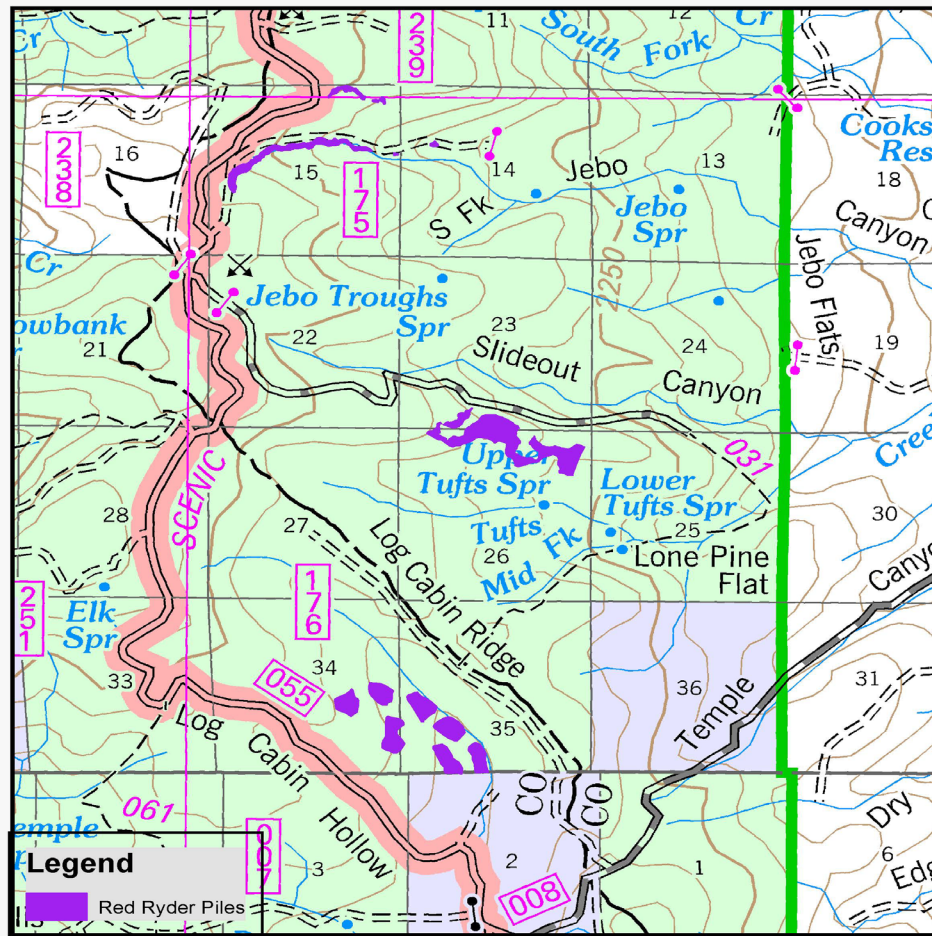
PILE BURNING ON THE LOGAN AND OGDEN RANGER DISTRICTS

Logan, Utah – October 5, 2023 - Fire personnel from the Ogden and Logan Ranger Districts plan to burn up to 197 acres of piles on the Red Ryder project. This includes 144 acres of hand piles on the Logan Ranger District in the Log Cabin Hollow, Jebo and Slideout areas and 53 acres of hand piles on the Ogden District in the New Canyon area. The Red Ryder project is located within portions of Rich and Cache Counties, and is approximately 45 miles east of Logan, Utah.

The hand piles were created from pre-commercial thinning to reduce the density of trees in previously harvested high density lodgepole pine stands. Decreasing stocking density in these stands will increase the growth and vigor of remaining trees. The objective of burning piles in the Red Ryder project is to dispose of accumulations of woody fuels from the precommercial thinning. Marshall Alford, Logan District Ranger said, "that by removing the piles by burning improves visual quality, reduces impacts of wildfire to local communities and returns the landscape to the desired multiple use management conditions".

Smoke from this prescribed burn could impact the Sweetwater, Meadowville and Randolph areas, however we will minimize the impacts to the residents by adhering to Utah's clean air standards.

USDA is an equal opportunity provider, employer, and lender.



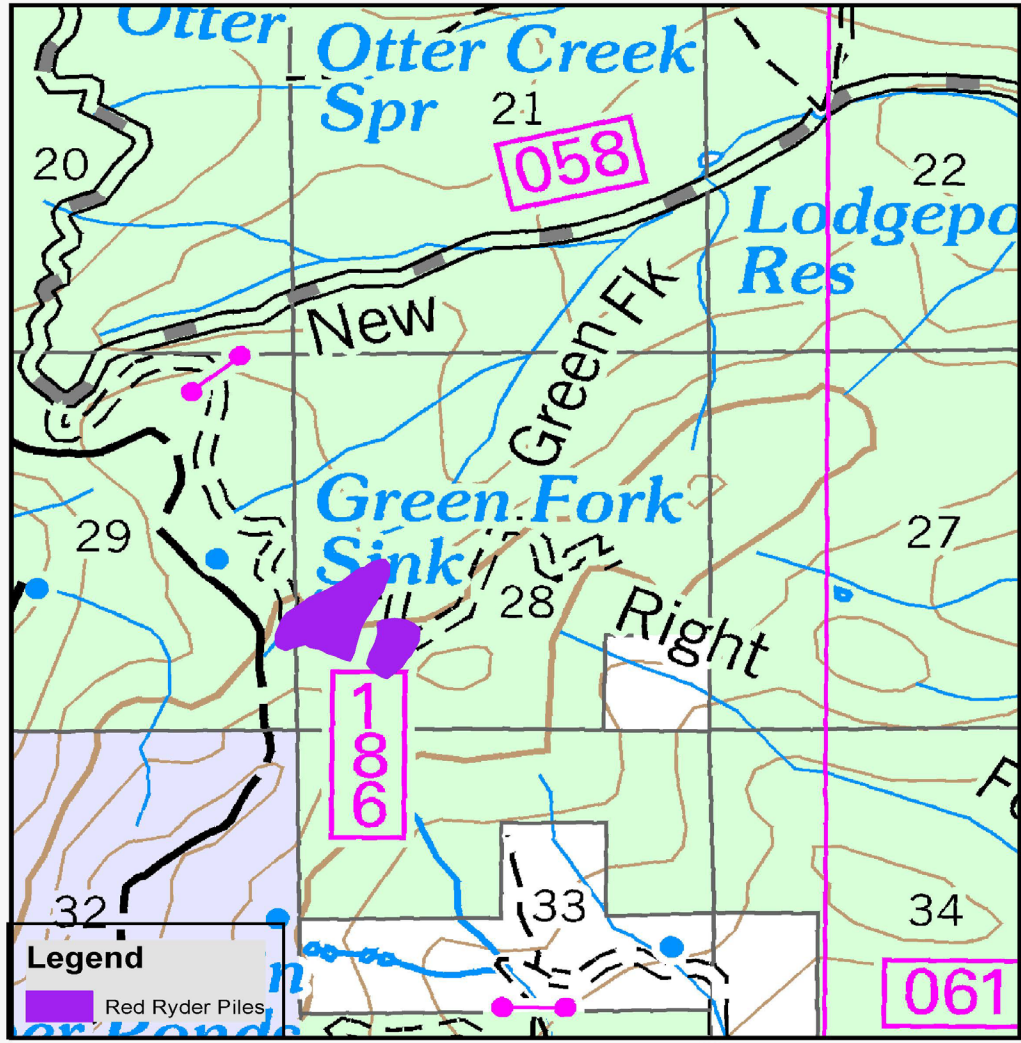
Red Ryder Piles-Logan (144 acres)

Logan Ranger District

Uinta Wasatch Cache National Forest

Map Created January 13, 2023
by Milena Rockwood





Red Ryder Piles-Ogden (53 acres)

Ogden Ranger District
Uinta Wasatch Cache National Forest

Map Created January 13, 2023
by Milena Rockwood





-USDA-



Forest Service